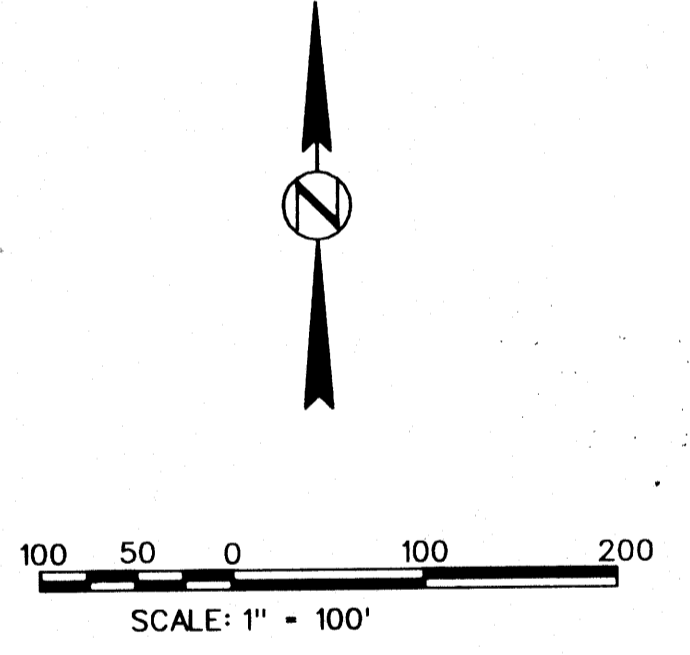
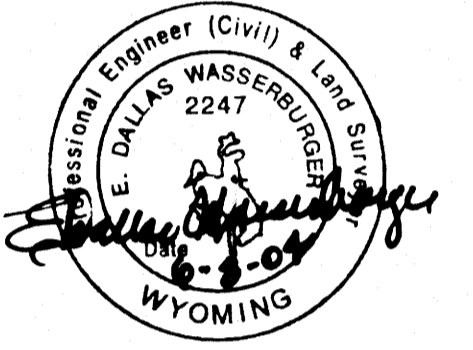
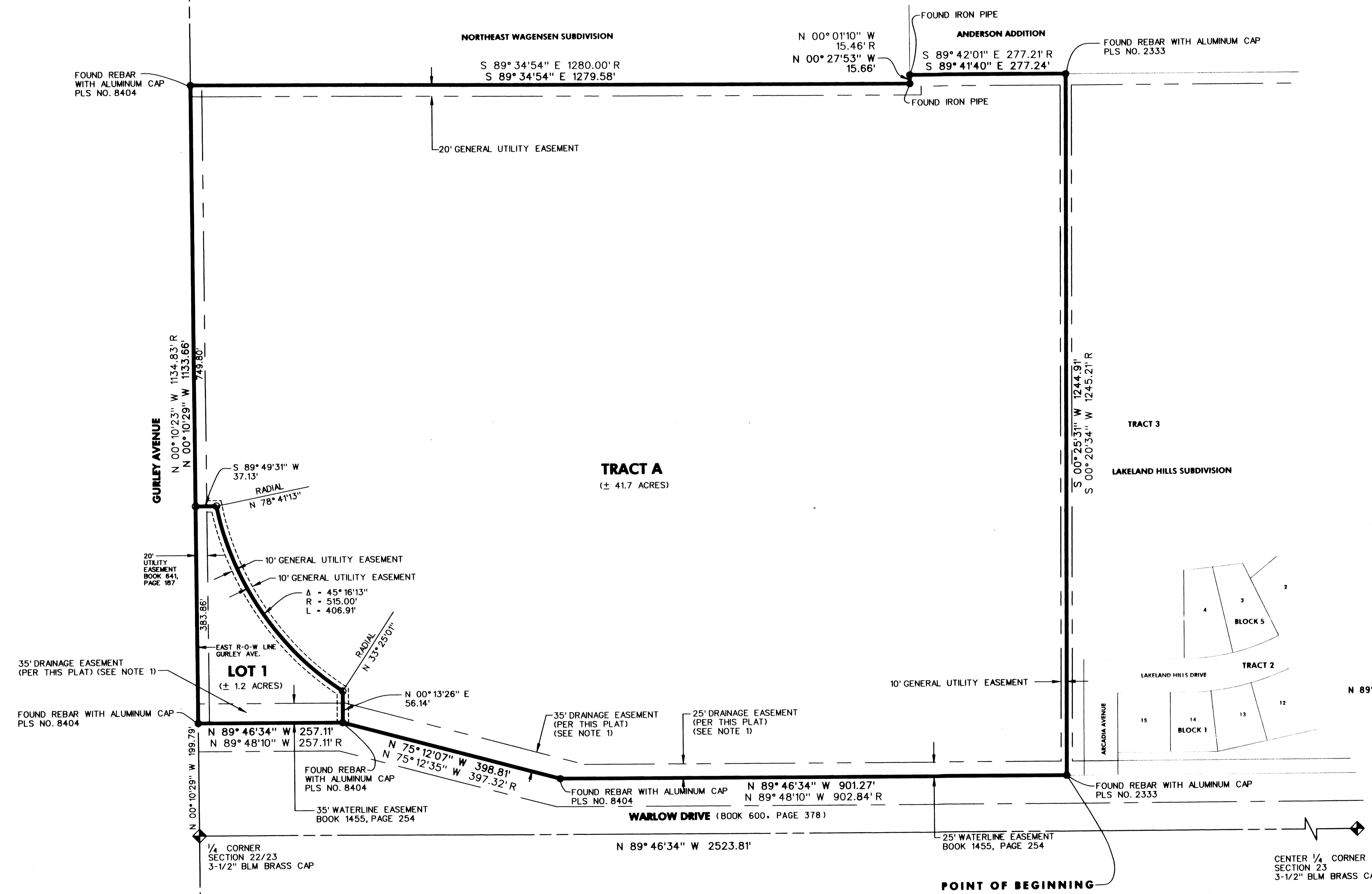


LAKELAND HILLS COMMERCIAL SUBDIVISION

RESUBDIVISION OF TRACT 1A, ENERGY PARK THIRD ADDITION,
GILLETTE, WYOMING IN THE SOUTH 1/2 OF THE
NORTH 1/2 SECTION 23, T49N, R72W, 6TH PRINCIPAL
MERIDIAN, CAMPBELL COUNTY, WYOMING

SHEET 1 OF 2

L26
(1 of 2)



LEGEND

- SET 2' #5 REBAR WITH ALUMINUM CAP
LS NO. 2247
- FOUND REBAR WITH ALUMINUM CAP
MARKED AS SHOWN
- ◆ FOUND SECTION CORNER
- RECORD DIMENSION

NOTE:

1. APPROVAL FROM THE CITY OF GILLETTE ENGINEERING DEPARTMENT MUST BE OBTAINED PRIOR TO GRADING OR PLACING DRAINAGE STRUCTURES IN THE EXISTING WATER LINE EASEMENTS RECORDED IN BOOK 600 AT PAGE 378 AND BOOK 1455 AT PAGE 254
2. THE BASIS OF BEARING IS S 00° 25' 31" W BETWEEN THE TWO MONUMENTS ALONG THE EAST LINE OF TRACT 1A ENERGY PARK THIRD ADDITION BASED ON THE CITY OF GILLETTE HORIZONTAL CONTROL NETWORK.

BASIS OF BEARING:

THE BASIS OF BEARING IS S 00° 25' 31" W BETWEEN THE TWO MONUMENTS ALONG THE EAST LINE OF TRACT 1A ENERGY PARK THIRD ADDITION BASED ON THE CITY OF GILLETTE HORIZONTAL CONTROL NETWORK.

PREPARED BY:
ALLIANCE OF ARCHITECTS & ENGINEERS
 706 WEST BOULEVARD
 RAPID CITY, SOUTH DAKOTA 57701
 PHONE: 605-342-9470