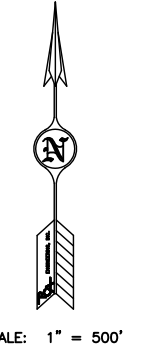


CAM-PLEX ANNEXATION

Exhibit "B" pg.2

A PORTION OF THE N1/2 & SE1/4 OF SECTION 25, T50N, R72W, A PORTION OF SECTION 30, A PORTION IN THE W1/2 OF SECTION 29, THE W1/2NW1/4 OF SECTION 32 AND A PORTION OF THE NE1/4 SECTION 31, T50N, R71W, OF THE 6TH P.M., CAMPBELL COUNTY, WYOMING

I-90



SCALE: 1" = 500'

LEGEND

- FOUND SECTION CORNER
- FOUND QUARTER CORNER
- FOUND SIXTEENTH CORNER
- FOUND PROPERTY CORNER
- SET PROPERTY CORNER
PLS 6872
- CALCULATED POSITION
- EXISTING CITY OF GILLETTE
CORPORATE LIMITS
- SECTION LINES
- QUARTER SECTION LINES
- LOT LINES
- ANNEXATION BOUNDARY

BENCHMARK

BASED ON CITY OF GILLETTE
VERTICAL CONTROL MONUMENT #1
ELEVATION = 4528.16

BASIS OF BEARING

THE CITY OF GILLETTE HORIZONTAL
CONTROL NETWORK
***ALL MEASURED DISTANCES ARE
GRID. FOR CONVERSION TO
SURFACE, MULTIPLY BY 1.00026964.
***ALL AREAS ARE CALCULATED
AT SURFACE.

Prepared for:

CITY OF GILLETTE

P.O. BOX 3003
GILLETTE, WYOMING 82717
307-686-5265

4506 Wigwam Blvd.
P.O. Box 2185
Gillette, Wyoming 82718
307-687-0600
PCA ENGINEERING, INC.

COPYRIGHT © ALL RIGHTS RESERVED BY PCA ENGINEERING, INC.

Drawn by: SM Design by: SM Reviewed by: DV
Revision Date Revision Description

PCA Project Number: 133610.00

Plot Date: Jul 24, 2013 - 2:55pm

G:\PROJECTS\13361000 Complex Annexation\DesDwgs\MainP.dwg

Layout: Plot 1 (2)

X-Ref: ...

CAM-PLEX ANNEXATION

A PORTION OF THE N1/2 &
SE1/4 OF SECTION 25, T50N,
R72W, A PORTION OF SECTION 30,
A PORTION IN THE W1/2 OF
SECTION 29, THE W1/2NW1/4 OF
SECTION 32 AND A PORTION OF
THE NE1/4 OF SECTION 31, T50N,
R71W, OF THE 6TH P.M.,
CAMPBELL COUNTY, WYOMING

ANNEXATION PLAT

SHEET 2 OF 2

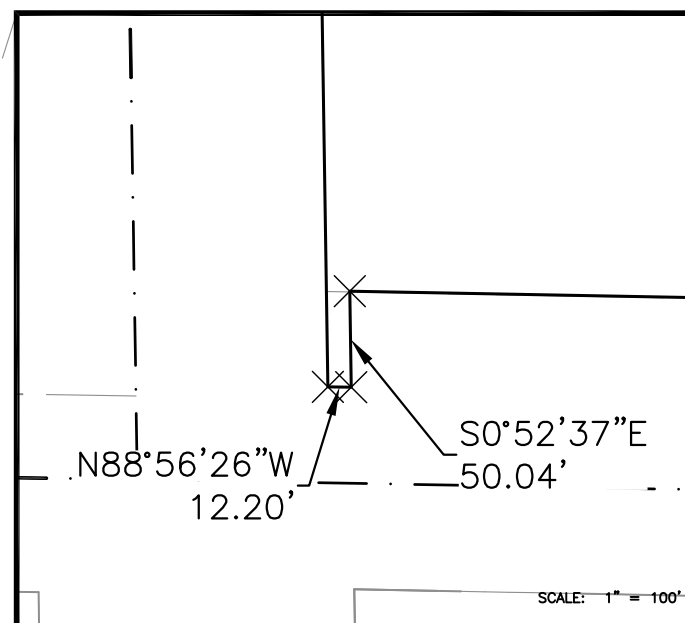
Sec. 25

Sec. 30

Sec. 29

Sec. 32

759.69 ACRES



SCALE: 1" = 100'

NOTE:
UNIMPROVED RIGHT OF WAY
DEPICTED ON THIS GILLETTE
COLLEGE RODEO SUBDIVISION
AND ANNEXATION IS INCLUDED
WITHIN THIS ANNEXATION.
(REFERENCE BOOK 10 PLATS,
PAGE 81)

GILLETTE COLLEGE
RODEO SUBDIVISION
AND ANNEXATIONC 1/4
SEC 29C 1/4
SEC 32C 1/4
SEC 32C 1/4
SEC 32C 1/4
SEC 32C 1/4
SEC 32C 1/4
SEC 32C 1/4
SEC 32C 1/4
SEC 32C 1/4
SEC 32C 1/4
SEC 32C 1/4
SEC 32C 1/4
SEC 32C 1/4
SEC 32C 1/4
SEC 32C 1/4
SEC 32C 1/4
SEC 32C 1/4
SEC 32C 1/4
SEC 32C 1/4
SEC 32C 1/4
SEC 32