

BOMGAARS/KG TOWN CENTER
IMPROVEMENT PLANS PHASE I

OWNER/DEVELOPER:

BOMGAARS
1805 ZENITH DR.
SIOUX CITY, IA 51103
712.226.5000

SECTION 34, TOWNSHIP 74N, RANGE 50W, OF THE 6TH PRINCIPAL MERIDIAN
CAMPBELL COUNTY, CITY OF GILLETTE, WYOMING

City Project No. 12EN24 / ePlans No. BP12-0692

CIVIL ENGINEER:

CAROL CHADWICK, P.E.
4300 LEXINGTON AVE.
GILLETTE, WY 82718
307.680.1772
cc-pe@vcn.com

GEOTECHNICAL ENGINEER:

MOUNTAIN PEAK BUILDERS
2801 E. 2nd ST.
GILLETTE, WY 82718
307.686.8125

FINAL RECORD
DRAWINGS

BOMGAARS/KG TOWN CENTER
IMPROVEMENT PLANS PH. I
COVER SHEET

CAROL CHADWICK, P.E.

Civil Engineer

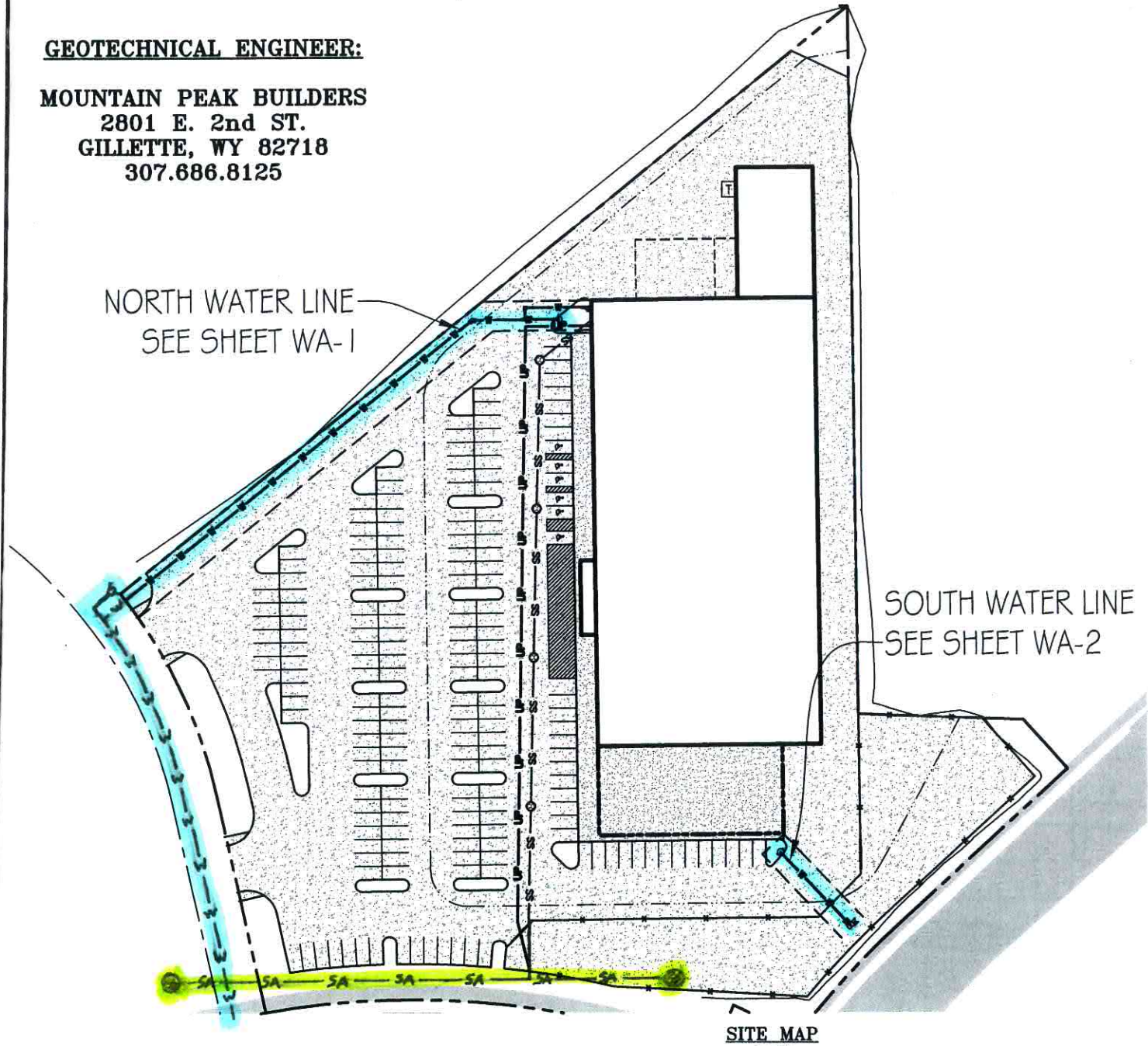
4300 Lexington Avenue
Gillette, WY 82718

(307) 680-1772
cc-pe@vcn.com

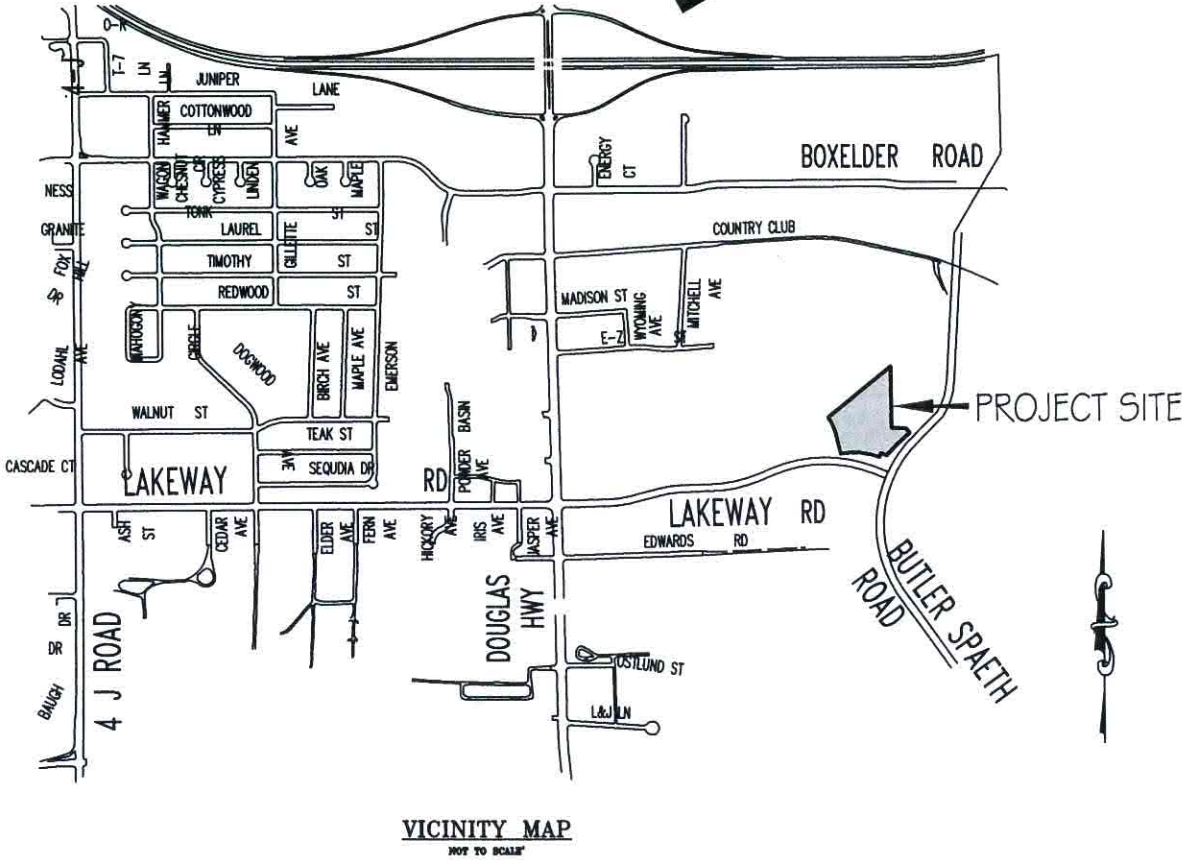
WYOMING • MONTANA • NEVADA • IDAHO • TEXAS
OREGON • CALIFORNIA • OKLAHOMA • N.C.E.E.S.

DATE: 06/10/13
JOB NO: 12EN24
DRAWN BY: CC
APPROVED BY: CC

COVER SHEET
CS-1



SITE MAP
1" = 100'



VICINITY MAP
NOT TO SCALE

SHEET NO.	SHEET TITLE
CS-1	COVER SHEET
SA-1	TOWN CENTER DRIVE SANITARY SEWER PLAN & PROFILE
SA-2	TOWN CENTER DRIVE SANITARY SEWER PLAN & PROFILE
SA-3	TOWN CENTER DRIVE SANITARY SEWER PLAN & PROFILE
SA-4	LAKEWAY ROAD SANITARY SEWER PLAN & PROFILE
WA-1	NORTH WATER LINE PLAN & PROFILE
WA-2	SOUTH WATER LINE PLAN & PROFILE
WA-3	TOWN CENTER DRIVE 22+00 TO 25+15.56 PLAN & PROFILE
DT-4a	SANITARY SEWER DETAILS
DT-4b	SANITARY SEWER DETAILS
DT-5a	WATER DETAILS
DT-5b	WATER DETAILS
TOTAL # OF SHEETS = 12	

I CERTIFY THAT THE CONSTRUCTION INSPECTION AND 'RECORD DRAWINGS' PREPARATION WERE PERFORMED BY ME OR UNDER MY DIRECT CONTROL AND SUPERVISION. THE CONSTRUCTION DETAILS AS SHOWN ON THESE 'RECORD DRAWINGS' ARE ACCURATE AND COMPLETE TO THE BEST OF MY KNOWLEDGE AND BELIEF.



BENCHMARK:
CITY OF GILLETTE VCM #: 23
NORTHING: 1372839
EASTING: 570571
ELEVATION: 4522.606

