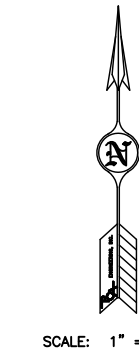


CAM-PLEX ANNEXATION

Exhibit "A" pg. 2

A PORTION OF THE N1/2 & SE1/4 OF SECTION 25, T50N, R72W, A PORTION OF SECTION 30, A PORTION IN THE W1/2 OF SECTION 29, THE W1/2NW1/4 OF SECTION 32 AND A PORTION OF THE NE1/4 SECTION 31, T50N, R71W, OF THE 6TH P.M., CAMPBELL COUNTY, WYOMING

I-90



SCALE: 1" = 500'

LEGEND

- FOUND SECTION CORNER
- FOUND QUARTER CORNER
- FOUND SIXTEENTH CORNER
- FOUND PROPERTY CORNER
- SET PROPERTY CORNER
PLS 6872
- CALCULATED POSITION
- EXISTING CITY OF GILLETTE
CORPORATE LIMITS
- SECTION LINES
- QUARTER SECTION LINES
- LOT LINES
- ANNEXATION BOUNDARY

BENCHMARK

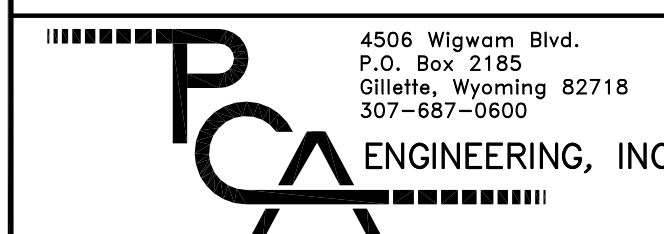
BASED ON CITY OF GILLETTE
VERTICAL CONTROL MONUMENT #1
ELEVATION = 4528.16

BASIS OF BEARING

THE CITY OF GILLETTE HORIZONTAL
CONTROL NETWORK
***ALL MEASURED DISTANCES ARE
GRID. FOR CONVERSION TO
SURFACE, MULTIPLY BY 1.00026964.
***ALL AREAS ARE CALCULATED
AT SURFACE.

Prepared for:

CITY OF GILLETTE
P.O. BOX 3003
GILLETTE, WYOMING 82717
307-686-5265



COPYRIGHT © ALL RIGHTS RESERVED BY PCA ENGINEERING, INC.

Drawn by: SM Design by: SM Reviewed by: DV
Revision Date Revision Description

PCA Project Number: 133610.00

Plot Date: Sep 05, 2013 - 10:15am

G:\PROJECTS\13361000 Complex Annexation\DesDwgs\MainP.dwg
Layout: Plot 1 (2)

X-Ref: ...

CAM-PLEX ANNEXATION

A PORTION OF THE N1/2 &
SE1/4 OF SECTION 25, T50N,
R72W, A PORTION OF SECTION 30,
A PORTION IN THE W1/2 OF
SECTION 29, THE W1/2NW1/4 OF
SECTION 32 AND A PORTION OF
THE NE1/4 OF SECTION 31, T50N,
R71W, OF THE 6TH P.M.,
CAMPBELL COUNTY, WYOMING

ANNEXATION PLAT

SHEET 2 OF 2

