

Van Ewing

CONSTRUCTION, INC.

5650 Magnuson Boulevard
Gillette, WY 82717

September 12, 2013

City of Gillette
P.O. Box 3003
Gillette, WY 82717-3003

Dustin Hamilton,

Enclosed are the following for Gillette Softbal/Baseball Complex:

Guaranteed Maximum Price Proposal

Exhibit A – Drawings, Specification, Addenda and General, Supplementary and other Conditions of Contract on which Budget is based.

Exhibit B – Allowance Items (N/A)

Exhibit C – Assumptions and Clarifications

Exhibit D – GMP Breakdown

Exhibit E – Schedule

Exhibit F – Unit Prices

Exhibit G – General Conditions & Insurance

Exhibit H – Value Engineering

Sincerely,



Trevor Larson
Vice President



Gillette Softball/Baseball Complex

Guaranteed Maximum Price

Exhibit A – Drawing, Specification, Addenda and General, Supplementary and other Conditions of Contract on which the Budget is based

Exhibit B – Allowance Items (N/A)

Exhibit C – Assumptions and Clarifications

Exhibit D – GMP Breakdown

Exhibit E – Schedule

Exhibit F – Unit Prices

Exhibit G – General Conditions & Insurance

Exhibit H - Value Engineering

Exhibit A

Drawings, Specifications,
Addenda

**Drawings, Specifications, Addenda, General, Supplementary, &
Other Conditions**

<u>Drawing No.</u>	<u>Drawing Date</u>
CS-1 Cover Sheet	11/7/2012
LG-1 Legend	11/7/2012
QN-1 Notes	11/7/2012
FP-1 Final Plat	11/7/2012
OU-1 Overall Utility Plan	11/7/2012
TR-1 Overall Street Plan	11/7/2012
TR-2-3 Typical Sections	11/7/2012
TR-4-8 Northwest Access Plan & Profiles	11/7/2012
TR-9-16 Northwest Access Cross Sections	11/7/2012
TR-17-20 Southeast Access Plan & Profiles	11/7/2012
TR-21-27 Southeast Access Cross Sections	11/7/2012
TR-28 Garner Lake Road Widening	11/7/2012
TR-29 Driveway Relocate Plan & Profile	11/7/2012
TR-30-32 Intersection Details	11/7/2012
SI-1-3 Signing and Striping Plan	11/7/2012
TC-1 Temporary Traffic Control Plan	11/7/2012
SA-1 Overall Sanitary Sewer Plan	11/7/2012
SA-2-7 Sanitary Sewer Plan & Profiles	11/7/2012
SA-8 Plaza Sanitary Sewer Plan & Profiles	11/7/2012
WA-1 Overall Water Plan	11/7/2012
WA-2-10 Water Plan & Profiles	11/7/2012
ST-1 Overall Storm Plan	11/7/2012
ST-2-5 Storm A Plan & Profiles	11/7/2012
ST-6 Storm B Plan & Profiles	11/7/2012
ST-7 Storm C Plan & Profiles	11/7/2012
ST-8 Storm D Plan & Profiles	11/7/2012
ST-9 Storm E Plan & Profiles	11/7/2012
ST-10 Storm F & G Plan & Profiles	11/7/2012
ST-11 Storm H & J Plan & Profiles	11/7/2012
ST-12 Storm K & L Plan & Profiles	11/7/2012
ST-13 Storm M & N Plan & Profiles	11/7/2012
ST-14 Storm P Plan & Profiles	11/7/2012
ST-15 Storm Q & R Plan & Profiles	11/7/2012
DT-1 Erosion Control Details	11/7/2012
DT-2 Street Details	11/7/2012
DT-3 Signing & Striping Details	11/7/2012
DT-4 Sanitary Sewer Details	11/7/2012
DT-5A Water Details-1	11/7/2012
DT-5B Water Details -2	11/7/2012
DT-6 Storm Details	11/7/2012

Gillette Softball/Baseball Complex
Project No. 12EN20
September 11, 2013

Exhibit A

G0.1	Cover Sheer	11/7/2012
G0.2	Composite Site Plan & Notes	11/7/2012
CS.1	Parking Lot Plan	11/7/2012
CS.2	Complex Entrance Sidewalk Plan	11/7/2012
T1.1	Overall Grading Plan North - 1	11/7/2012
T1.2	Overall Grading Plan North - 2	11/7/2012
T1.3	Cut/Fill Plan North - 1	11/7/2012
T1.4	Cut/Fill Plan South - 1	11/7/2012
T1.5	Complex Grading Plan North - 1	11/7/2012
T1.6	Complex Grading Plan South - 1	11/7/2012
T1.7	Complex Grading Plan North - 1	11/7/2012
T1.8	Complex Grading Plan South - 1	11/7/2012
L1.1	Composite Layout & Materials Plan- North	11/7/2012
L1.2	Composite Layout & Materials Plan- South	11/7/2012
L2.1	Bellfields #1 & #2-Layout and Material Plan	11/7/2012
L2.2	Ballfields #3 & #4-Layout and Material Plan	11/7/2012
L3.1	Ballfields #1 & #2-Grading and Drainage Plan	11/7/2012
L3.2	Ballfields #3 & #4-Grading and Drainage Plan	11/7/2012
L4.1	Ballfield Drainage Section & Details	11/7/2012
L5.1	West Ballfield Plaza (Fields #1-#4) Plan	11/7/2012
L5.3	West Ballfield Plaza C.M.U Wall Key Plan	11/7/2012
L5.4	West Ballfield Plaza C.M.U Wall Profiles	11/7/2012
L5.5	C.M.U. Wall & Trash Enclosure Details	11/7/2012
L5.6	Central Plaza Plan & Plaza Entry Gates	11/7/2012
L5.7	Ballfield Backstop Sections & Details	11/7/2012
L5.8	Ballfield Dugout/Bleacher Plans	11/7/2012
L5.9	Ballfield Dugout/Bleacher Section & Details	11/7/2012
L5.10	Ballfield Dugout/Bleacher Section & Details	11/7/2012
L5.11	Ballfield Dugout/Bleacher Section & Details	11/7/2012
L5.12	West Ballfield Plaza Prot. Netting Key Plan	11/7/2012
L5.13	West Ballfield Plaza Prot. Netting Key Profiles	11/7/2012
L5.14	Ballfield Plaza Prot. Netting Details	11/7/2012
L5.15	Northwest Batting Cage/Bullpens Plan Enlargement & Details	11/7/2012
L5.16	West Bullpens Plan Enlargement & Ballfield Sections & Details	11/7/2012
L5.17	Ballfield Section & Details	11/7/2012
L6.1	Sewer & Water Plan – West Ballfield Plaza	5/1/2012

Gillette Softball/Baseball Complex**Project No. 12EN20****Exhibit A****September 11, 2013**

IR1.1	Composite Irrigation Plan - North	11/7/2012
IR1.2	Composite Irrigation Plan - South	11/7/2012
IR2.1	Ballfields #1 & #2 - Irrigation Plan	11/7/2012
IR2.2	Ballfields #3 & #4 - Irrigation Plan	11/7/2012
IR2.5	Ballfield W & E Edges – Irrigation Plan	11/7/2012
IR2.7	West Property Line – Irrigation Plans	11/7/2012
IR2.8	West Property Line – Irrigation Plans	11/7/2012
IR2.9	West Property Line – Irrigation Plans	11/7/2012
IR3.1	Irrigation Sections & Details	11/7/2012
IR3.2	Irrigation Sections & Details	11/7/2012
LP1.1	Composite Landscape Planting Plan –North	11/7/2012
LP1.2	Composite Landscape Planting Plan – South	11/7/2012
LP2.1	Landscape Planting Sections & Details	11/7/2012
E0.0	Symbols and Abbreviations	11/7/2012
E1.1	Electrical Site Plan – Grid ‘1’	11/7/2012
E1.6	Electrical Site Plan – Grid ‘6’	11/7/2012
E1.11	Electrical Site Plan – Grid ‘11’	11/7/2012
E1.12	Electrical Site Plan – Grid ‘12’	11/7/2012
E1.13	Electrical Site Plan – Grid ‘13’	11/7/2012
E1.16	Electrical Site Plan – Grid ‘16’	11/7/2012
E1.17	Electrical Site Plan – Grid ‘17’	11/7/2012
E1.18	Electrical Site Plan – Grid ‘18’	11/7/2012
E1.19	Electrical Site Plan – Grid ‘19’	11/7/2012
E1.23	Electrical Site Plan – Grid ‘23’	11/7/2012
E1.24	Electrical Site Plan – Grid ‘24’	11/7/2012
E1.25	Electrical Site Plan – Grid ‘25’	11/7/2012
E1.29	Electrical Site Plan – Grid ‘29’	11/7/2012
E1.34	Electrical Site Plan – Grid ‘34’	11/7/2012
E2.0	Enlarged Site Plan – West	11/7/2012
E2.1	Enlarged Site Plan – East	11/7/2012
E2.2	Elec. Plan – West Fastpitch Field Concess.Bldg.	11/7/2012
E2.3	Elec. Plan – West Fastpitch Field Meeting Bldg.	11/7/2012
E3.0	Electrical Details	11/7/2012
E3.1	Electrical Details	11/7/2012
E4.0	Online Diagram & Panel Schedules – West	11/7/2012
E4.1	Online Diagram & Panel Schedules – East	11/7/2012
AV2.0	Enlarged Audiovisual Site Plan – West	11/7/2012
AV2.1	Enlarged Audiovisual Site Plan – East	11/7/2012
AV2.2	Audiovisual Single Line	11/7/2012
A1.1	Main Floor Plan	11/7/2012
A1.2	Roof Plan & Details	11/7/2012
A2.1	Exterior Elevations	11/7/2012

Gillette Softball/Baseball Complex**Project No. 12EN20****Exhibit A****September 11, 2013**

A3.1	Building Sections & Wall Sections	11/7/2012
A5.1	Finish Floor Plan	11/7/2012
A6.1	Door Schedules & Details	11/7/2012
A8.1	Interior Elevations	11/7/2012
S0.1	Structural General Notes	11/7/2012
S0.2	Structural Schedules and Typical Details	11/7/2012
S1.1	Foundation Plan	11/7/2012
S1.2	Roof Framing Plan	11/7/2012
S2.1	Structural Details	11/7/2012
M1.1	HVAC Main Floor Plan	11/7/2012
P1.0	Plumbing Legend, Schedules & Details	11/7/2012
P1.1	Plumbing DVW Plan	11/7/2012
P2.1	Plumbing Domestic Water Plan	11/7/2012

Specifications

DIVISION 00 - PROCUREMENT AND CONTRACTING REQUIREMENTS

00 01 10 Table of Contents

DIVISION 01 - GENERAL REQUIREMENTS

Section 00200 Instruction to Bidders

Section 00300 Bid Form

Section 00500 Agreement Between the Owner and Contractor

Section 00600 Bid Bond

Standard Forms (incorporated by reference)

General Conditions (incorporated by reference)

Special Provisions

Standard Drawings (Incorporated by reference)

DIVISION 03 – CONCRETE

03 30 00 Cast-In-Place Concrete

03 30 10 Anchorages to Concrete

03 30 30 Cast-In-Place Concrete Slabs

DIVISION 04 - MASONRY

04 20 00 Unit Masonry

DIVISION 05 - METALS

05 12 00 Structural Steel Framing

05 21 00 Steel Joist Framing

05 31 00 Steel Decking

05 31 23 Steel Roof Decking

05 40 00 Cold-Formed Metal Framing

05 50 00 Metal Fabrications

Gillette Softball/Baseball Complex

Project No. 12EN20

September 11, 2013

Exhibit A

DIVISION 06 - WOOD, PLASTICS, AND COMPOSITES

06 10 53 Miscellaneous Rough Carpentry

06 16 00 Sheathing

06 41 16 Plastic-Laminate-Faced Architectural Cabinets

**DIVISION 07 - THERMAL AND MOISTURE
PROTECTION**

07 19 00 Water Repellents

07 25 00 Weather Barriers

07 42 13.13 Formed Metal Wall Panels

07 42 13.53 Metal Soffit Panels

07 53 23 Ethylene-Propylene-Diene-Monomer Roofing

07 62 00 Sheet Metal Flashing and Trim

DIVISION 08 - OPENINGS

08 11 13 Hollow Metal Doors and Frames

08 33 13 Coiling Counter Doors

08 33 23 Overhead Coiling Doors

08 53 13 Vinyl Windows

08 71 00 Door Hardware

08 80 00 Glazing

DIVISION 09 - FINISHES

09 21 16 Non-Structural Metal Framing

09 29 00 Gypsum Board

09 65 13 Resilient Base and Accessories

09 91 13 Exterior Painting

09 91 23 Interior Painting

09 96 00 High Performance Coating

DIVISION 10 - SPECIALTIES

10 28 00 Toilet, Bath, and Laundry Accessories

10 44 16 Fire Protection Specialties

10 56 13 Metal Lockers

DIVISION 12 - FURNISHINGS

12 36 16 Metal Countertops

Gillette Softball/Baseball Complex

Project No. 12EN20

September 11, 2013

Exhibit A

DIVISION 22 – Plumbing

220523 General Duty Valves For Plumbing Piping
220529 Hangers and Supports For Plumbing Piping
221116 Domestic Water Piping
221119 Domestic Water Piping Specialties
221123 Domestic Water Pumps
221316 Sanitary Waste and Vent Piping
221319 Sanitary Waste Piping Specialties
223300 Electric Domestic Water Heaters
224000 Plumbing Fixtures

DIVISION 23 – Heating Ventilating and Air Conditioning

230500 Common Work Results for Plumbing and HVAC
233423- HVAC Power Ventilators
238119 Self Contained Air Conditioners

DIVISION 26 – ELECTRICAL

260126 Maintenance Testing of Electrical Systems
260500 Common Work Results for Electrical
260519 Copper Conductors and Cables
260526 Grounding and Bonding for Electrical Systems
260533 Raceways and Boxes for Electrical Systems
260553 Identification for Electrical Systems
260923 Lighting Control Devices
262200 Low Voltage Transformers
262416 Panelboards
262726 Wiring Devices
262816 Circuit Breakers
265100 Interior Lighting
265600 Exterior Site Electrical and Lighting
265650 Light Fixture Schedule

DIVISION 27- TELECOM

270510 Common Work Results for Audio-Video Systems
270526 Ground and Bonding for Communications Systems
270528 Conduit and Backboxes for Communication Systems
274116 Audio-Video Systems Basic Materials and Methods
274116.10 Audio-Video Systems Equipment List

DIVISION 31 – EARTHWORK

31 20 00 Earth Moving
31 22 19 Finish Grading

DIVISION 32 - EXTERIOR IMPROVEMENTS

32 16 13.13 Cast-In-Place Concrete
32 18 14 Field Subdrainage & Soils
32 18 15 Field Storm Drainage
32 18 23.14 Synthetic Turf Base Stone
32 18 23.15 Field Perimeter Nailer
32 18 23.19 Synthetic Sport Field Surfacing
32 31 13 Chainlink Fencing & Gates
32 31 13.33 Chainlink Backstops
32 31 13.34 Protective Net Structure
32 39 14 Metal Fabrications
32 39 15 Athletic Facility Site Furnishings
32 39 16 Athletic Facility Signs
32 84 23 Underground Sprinklers
32 91 00 Soil Preparation
32 92 00 Turf and Grasses
32 93 00 Planting
33 11 00 Water System
33 30 00 Sanitary Sewer System

Exhibit C

Assumptions

&

Clarifications

Assumptions and Clarifications

This pricing reflects ~

This price is for the west complex (Four Softball Fields) and the main road (Schedule C) only.

All material testing and special inspections to be paid by the owner.

Acceptance of GMP by the City Council on September 16, 2013, with a Notice to Proceed issued by October 1, 2013.

Exhibit D

GMP Breakdown

September 11, 2013

Exhibit D

**Guaranteed Maximum Price Proposal
For Gillette Softball/Baseball Complex
Project # 12EN20**

GMP Breakdown:

Bonds	\$	
General Conditions	\$	
Site Work	\$	
Landscaping	\$	
Concrete	\$	
Masonry	\$	
Metals	\$	
General Construction	\$	
Thermal & Moisture Protection	\$	
Synthetic Turf	\$	
Mechanical	\$	
Electrical	\$	
Sub Total	\$	
CMAR Fee – 5.5%	\$	382,087
Contingency – 2%	\$	146,583
TOTAL	\$	7,475,701

Exhibit E

Schedule

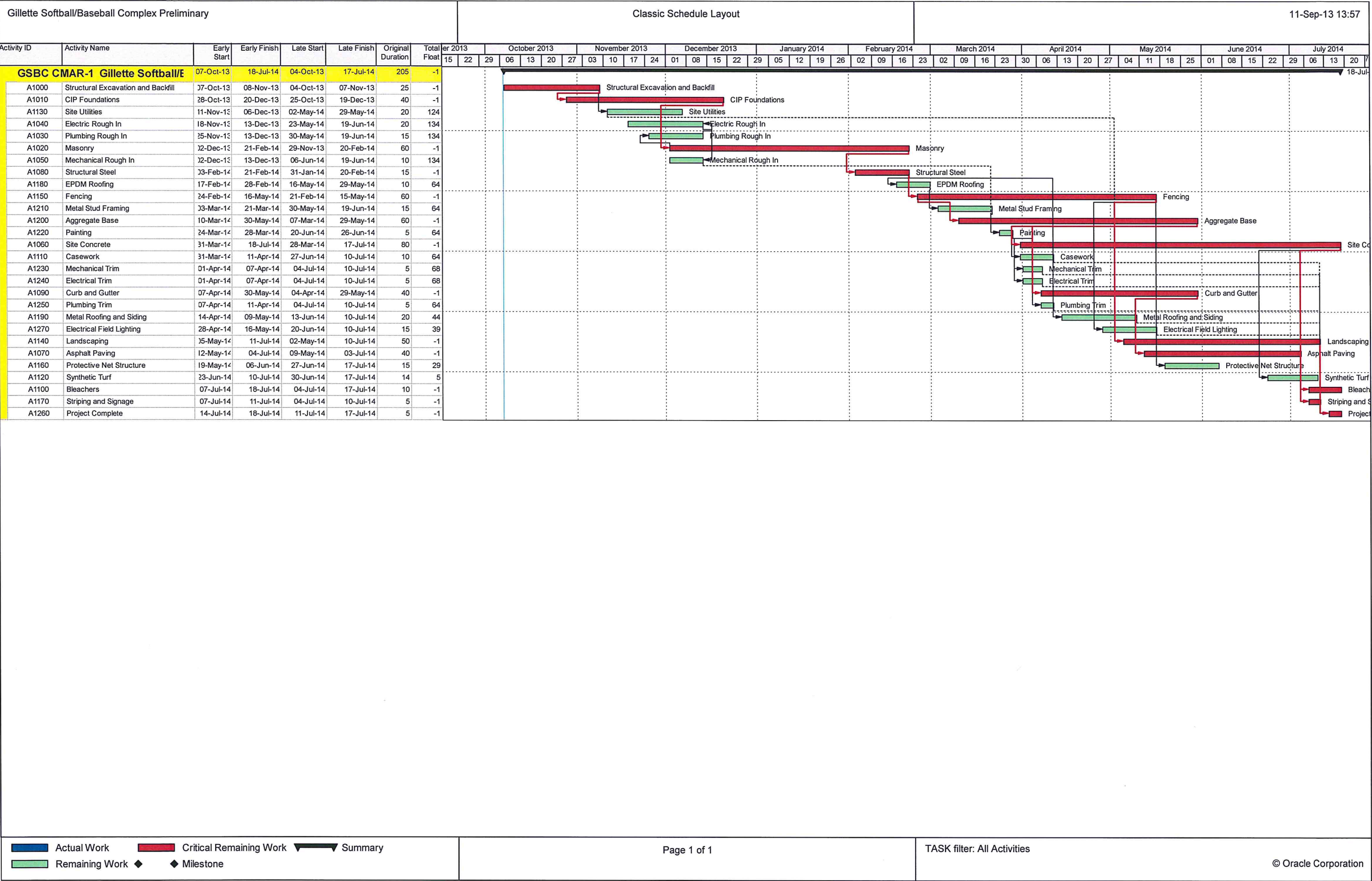


Exhibit F

Unit Prices

**Gillette Softball/Baseball Complex
Project No. 12EN20**

Exhibit F

Unit Prices – Effective January 1, 2013

Labor Rates 2013

Position	Hourly Rate	Overtime Rate
Laborer	\$50.00	\$75.00
Carpenter	\$55.00	\$82.50
Iron Worker	\$58.00	\$87.00
Painter	\$50.00	\$75.00
Operator	\$58.00	\$87.00
Concrete Finisher	\$55.00	\$82.50
Welder	\$60.00	\$90.00
Foreman	\$70.00	\$105.00
Project Manager	\$100.00	\$150.00
Office Staff	\$55.00	\$82.50

Equipment Rates 2013

Backhoe	\$40.00/Hr
Skid Steer	\$33.00/Hr
Dump Truck	\$40.00/Hr
Pickup	\$40.00/Day
Welding Truck	\$35.00/Hr
Boom Truck	\$125.00/Hr
75 TN Truck Crane	\$250.00/Hr
Wacker Compactor	\$20.00/Hr
Concrete Saw	\$22.00/Hr (Plus Blades)
Tool Storage Van	\$40.00/Day
Air Compressor 185 CFM	\$120.00/Day
Extended Boom Fork Lift	\$250.00/Day; \$1000.00/Wk; \$2750.00/Mo
60 LB. Jack Hammer	\$70.00/Day
Quickie Saw	\$65.00/Day (Plus Diamond Blades)
Propane Heater	\$30.00/Day
20' Electric Scissor Lift	\$125.00/Day
26' RT Scissor Lift	\$155.00/Day
60' Straight Boom Manlift	\$350.00/Day
45' Knuckle Boom Manlift	\$265.00/Day
Rammax Roller Compactor	\$200.00/Day
Vibrating Plate	\$70.00/Day

**** Fuel to be supplied at cost, and not included in rental pricing.****

Exhibit G

General Conditions & Insurance

General Conditions and Insurance:

1) Surety Bond	\$43,400.00
2) General Conditions (schedule to follow)	\$603,654.00

Exhibit H

Value Engineering

Construction Cost Value Engineering Items

VE Items already utilized:

- 1.) Eliminated the east complex parking lot and changed the curb and gutter to 18”
(-\$484,000.00)
- 2.) Eliminated the drinking fountains at all dugouts and bullpens
(-\$20,000.00)
- 3.) Eliminated the infield and outfield irrigation systems
(-\$35,000.00)
- 4.) By changing the block to a smooth faced color block in lieu of the ground face color block
(-\$20,000.00)
- 5.) Changing the Synthetic Turf product to a 2” turf in lieu of the 2.25”.
(-\$67,850.00)
- 6.) Eliminated the trench drains in the bleachers.
(-\$23,600.00)

Additional VE items if needed:

- 1.) Change the entry gates from galvanized tube steel to a chain link gate.
(-\$15,000.00)
- 2.) Change the 6 gauge chain link to a 9 gauge.
(-\$7,000.00)