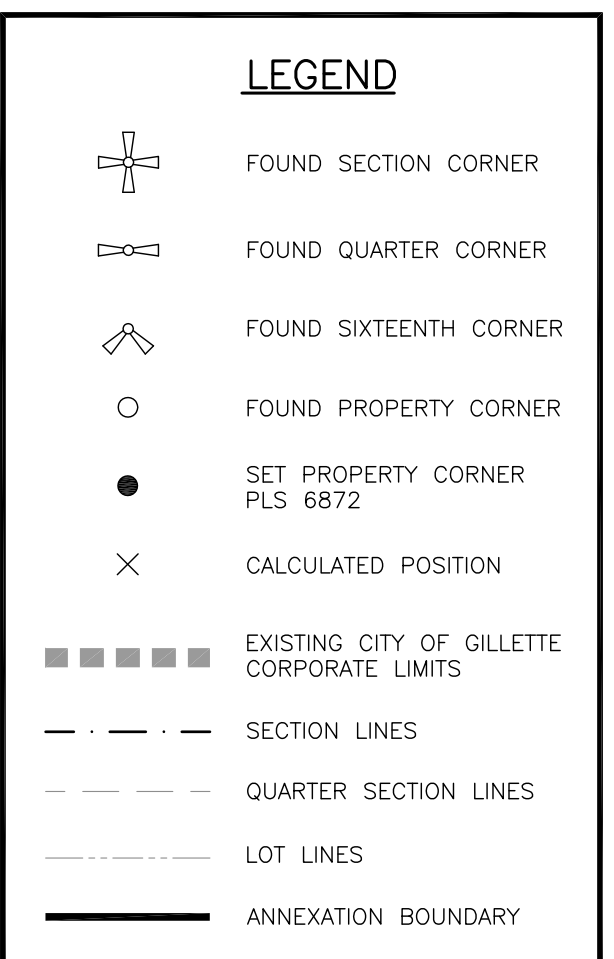








Exhibit "A" pg. 2



	FOUND SECTION CORNER
	FOUND QUARTER CORNER
	FOUND SIXTEENTH CORNER
	FOUND PROPERTY CORNER
	SET PROPERTY CORNER PLS 6872
	CALCULATED POSITION

■ ■ ■ EXISTING CITY OF GILLETTE
CORPORATE LIMITS

— SECTION LINES

- - QUARTER SECTION LINES

—— LOT LINES

■■■■ ANNEXATION BOUNDARY

SED ON CITY OF GILLETTE
RTICAL CONTROL MONUMENT #1
ELEVATION= 4528.16

THE CITY OF GILLETTE HORIZONTAL
CONTROL NETWORK.
***ALL MEASURED DISTANCES ARE
GRID. FOR CONVERSION TO
SURFACE, MULTIPLY BY 1.00026964.
***ALL AREAS ARE CALCULATED
AT SURFACE.

CITY OF GILLETTE
P.O. BOX 3003
GILLETTE, WYOMING 82717
307-686-5265

PCA ENGINEERING, INC.
4506 Wigwam Blvd.
P.O. Box 2185
Gillette, Wyoming 82718
307-687-0600

COPYRIGHT © ALL RIGHTS RESERVED BY PCA ENGINEERING, INC

Drawn by: SM	Design by: SM	Reviewed by: DV
Revision Date	Revision Description	

PCA Project Number: 133610.00

Plot Date: Sep 05, 2013 - 10:15am

G:\PROJECTS\13361000 Complex Annexation\DesDwgs\Main
MainP.dwg

Layout: Plat 1 (2)
Y. P. 6

A PORTION OF THE N1/2 &
SE1/4 OF SECTION 25, T50N,
R72W, A PORTION OF SECTION 30,
A PORTION IN THE W1/2 OF
SECTION 29, THE W1/2NW1/4 OF
SECTION 32 AND A PORTION OF
THE NE1/4 OF SECTION 31, T50N,
R71W, OF THE 6TH P.M.,
CAMPBELL COUNTY, WYOMING

SHEET 2 OF 2