

APPROVALS

Data on this PUD plat reviewed this _____day of _____,
20_____,A.D., by the City Engineer of Gillette, Wyoming.

City Engineer

This PUD plat approved by the City of Gillette Planning Commission
this _____day of _____,20_____,A.D.

Chairman

Secretary

Approved by the City Council of the City of Gillette, Wyoming
this _____day of _____,20_____,A.D.

Mayor

City Clerk

FINAL PLAT
PRAIRIE FIRE BREWING
PLANNED UNIT DEVELOPMENT
CITY OF GILLETTE, WYOMING

DECLARATION VACATING
PREVIOUS PLATTING

This PUD plat is the resubdivision of LOT 1A, BLOCK 5, BIVENS
ADDITION, as recorded in Book ____ of Plats, Page _____, of the records of
the Campbell County Clerk. All earlier plats or portions thereof,
encompassed by the boundaries of this PUD plat are hereby vacated.

PROJECT
LOCATION

VICINITY
MAP

NTS



DEDICATION

Know all men by these presents that the undersigned PRAIRIE FIRE
BREWING COMPANY, LLC, being the owner, proprietor, or parties of
interest in the land shown on this plat, do hereby certify,

The above and foregoing PRAIRIE FIRE BREWING PLANNED UNIT
DEVELOPMENT being more particularly described as follows:

LOT 1A, BLOCK 5, BIVENS ADDITION

Said tract of land contains 0.64 acres, more or less, subject to all rights,
restrictions and/or easements of sight and record, and as appears on this
plat, is made with the free consent, and in accordance with the desires of
the undersigned owners and proprietors, and that this is a correct plat of
the area as it is divided in lots, blocks, streets and easements, and

That the undersigned owners and proprietors of the land shown and
described on this plat do hereby dedicate to the City of Gillette for perpetual
public use all streets, alleys, easements and other lands within the
boundary lines of the plat as indicated and not already otherwise dedicated
for public use. Private streets, alleys, easements, common areas as
indicated on this Plat are not dedicated to the City and remain the
responsibility of private landowner.

Public utility easements as designated on this plat are hereby dedicated to
the City of Gillette and its licensees for perpetual public use, for the purpose
of installing, repairing, replacing and maintaining water lines, sewers, gas
lines, electrical lines, telephone lines, cable TV lines and the forms and
types of public utilities now or hereafter generally utilized by the public.

All rights under and by virtue of the homestead exemption laws of the
State of Wyoming are hereby waived and released.

Executed this _____ day of _____, A.D., 20____ by:

Owner: PRAIRIE FIRE BREWING COMPANY, LLC

Prairie Fire Brewing Company, LLC
Title:

STATE OF WYOMING)
) ss
COUNTY OF CAMPBELL)

The foregoing instrument was acknowledged before me this _____
day of _____, A.D., 20____, by _____as
_____ for PRAIRIE FIRE BREWING COMPANY, LLC, as a free and voluntary act and deed.

Witness my hand and official seal.

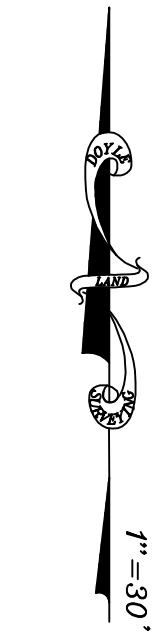
Notary Public
My Commission Expires _____

FINAL PLAT

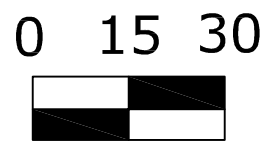
PRAIRIE FIRE BREWING
PLANNED UNIT DEVELOPMENT
Gillette, Wyoming

Prepared for:
Prairie Fire Brewing
P.O. Box 745
Gillette, WY 82717

Prepared by:
DOYLE SURVEYING, INC.
801 E. Fourth Street, Ste.15
Gillette, WY 82716
PH: (307)686-2410



SCALE
1" = 30'



LEGEND

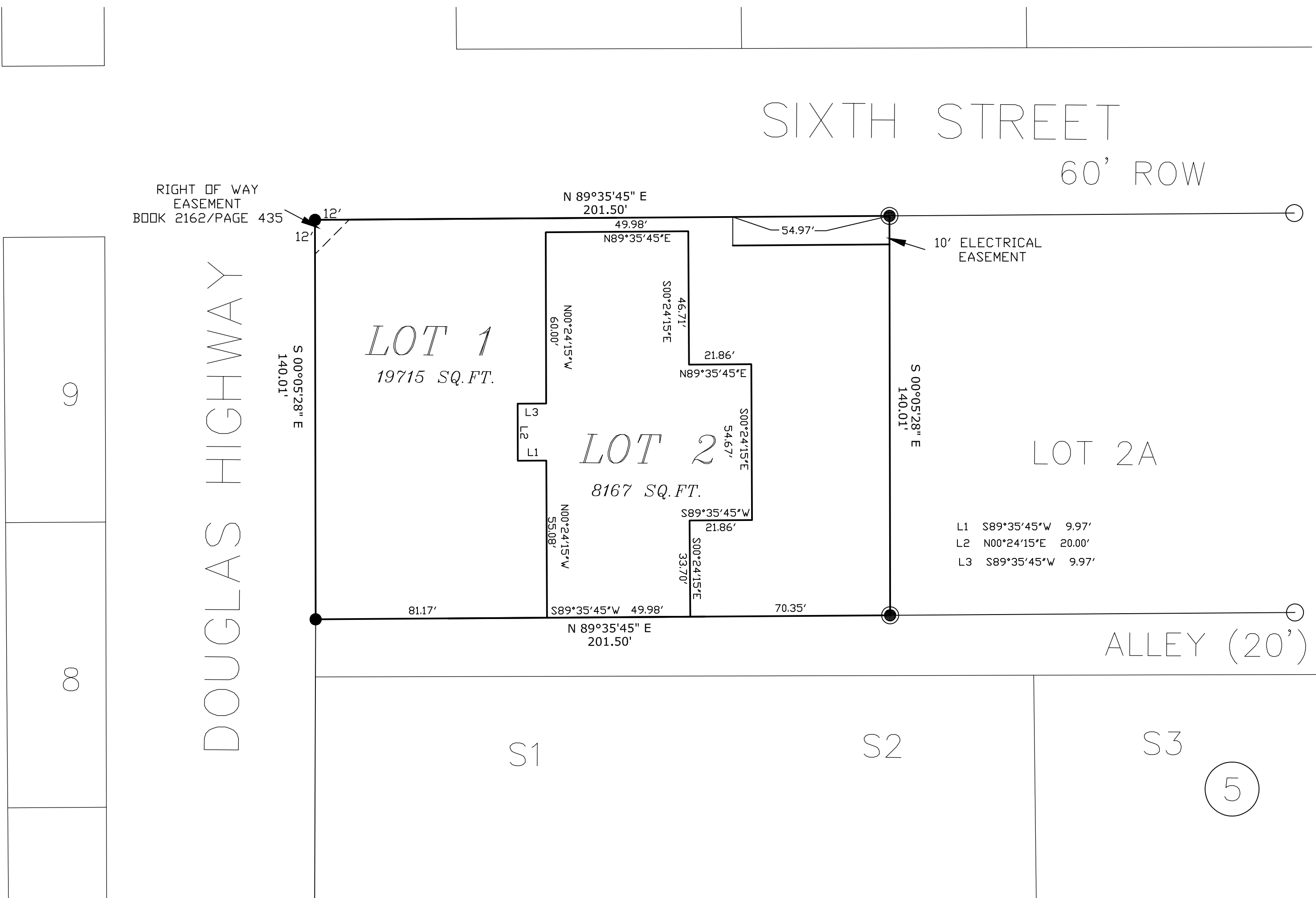
⊗ FOUND CORNER MARKER

● FND 24" LONG 5/8" REBAR WITH ALUMINUM
SURVEY CAP MARKED "RLS 2333"

PROJECT SUMMARY:
TOTAL AREA: 0.64 ACRES
TOTAL LOTS: 2

SURVEYOR'S CERTIFICATE

I, Richard T. Doyle, do hereby certify that I am a registered land surveyor, licensed
under the laws of the State of Wyoming, that this plat is a true, correct, and complete
plat of PRAIRIE FIRE BREWING PLANNED UNIT DEVELOPMENT, as laid out, platted,
dedicated and shown hereon, that such plat was made from an accurate survey of said
property by me and under my supervision and correctly shows the location and
dimensions of the lots, easements, and streets of said subdivision as the same are
staked upon the ground in compliance with City of Gillette regulations governing the
subdivision of the land.



This PUD plat filed for record in the office of the Clerk and Recorder at
____o'clock __.m., _____, 20____,
and is duly recorded in Book _____, Page No. _____.
County Clerk