




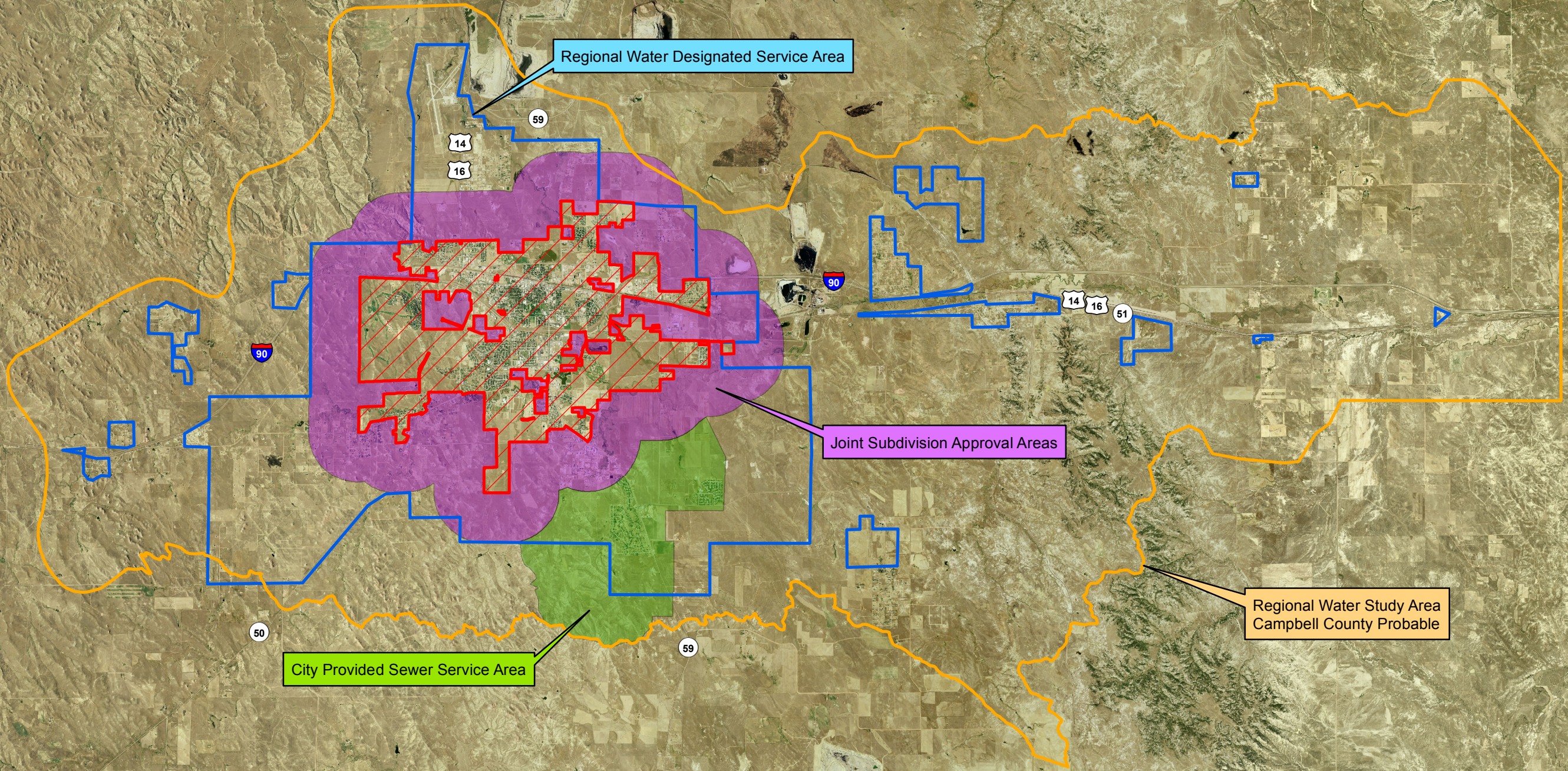


Exhibit A

DEQ Delegation Agreement

- Legend**
-  City Limits
 -  Regional Water Study Area
 -  Regional Water Designated Service Area
 -  Joint Subdivision Approval Areas
 -  City Provided Sewer Service Area



- NOTES**
1. The City will permit connections to the City water and sewer systems located within the corporate limits of the City of Gillette.
 2. The "City Provided Sewer Service Area" encompasses the South Douglas Highway Regional Sewer District. The City of Gillette will permit connections to the South Douglas Highway Sewer District System and City Trunk Line.
 3. The City will permit Regional Water Service Extensions to Water Districts located in the "Designated Service Area and Water Study Area" from the City's existing water system up to, and including, the master meter vault and respective connection to the Water District. Upon execution of a Water Service Agreement with the City and upon the connection and activation of the the respective Regional Water Extension, the Water District will receive Wholesale Water Service from the City and will be considered a Consecutive Water System as defined by Federal Safe Drinking Water Standards. The Regional Water Service Extensions up to and including the master meter vault will be owned, operated and maintained by the City.
 4. The City will permit connections to the City water and sewer system of subdivisions receiving City of Gillette services in the Joint City-County Subdivision Approval Area.