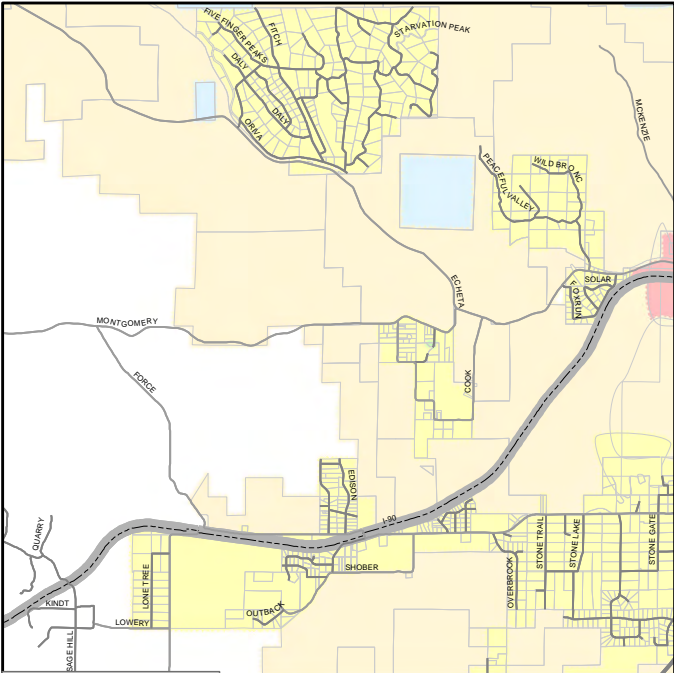
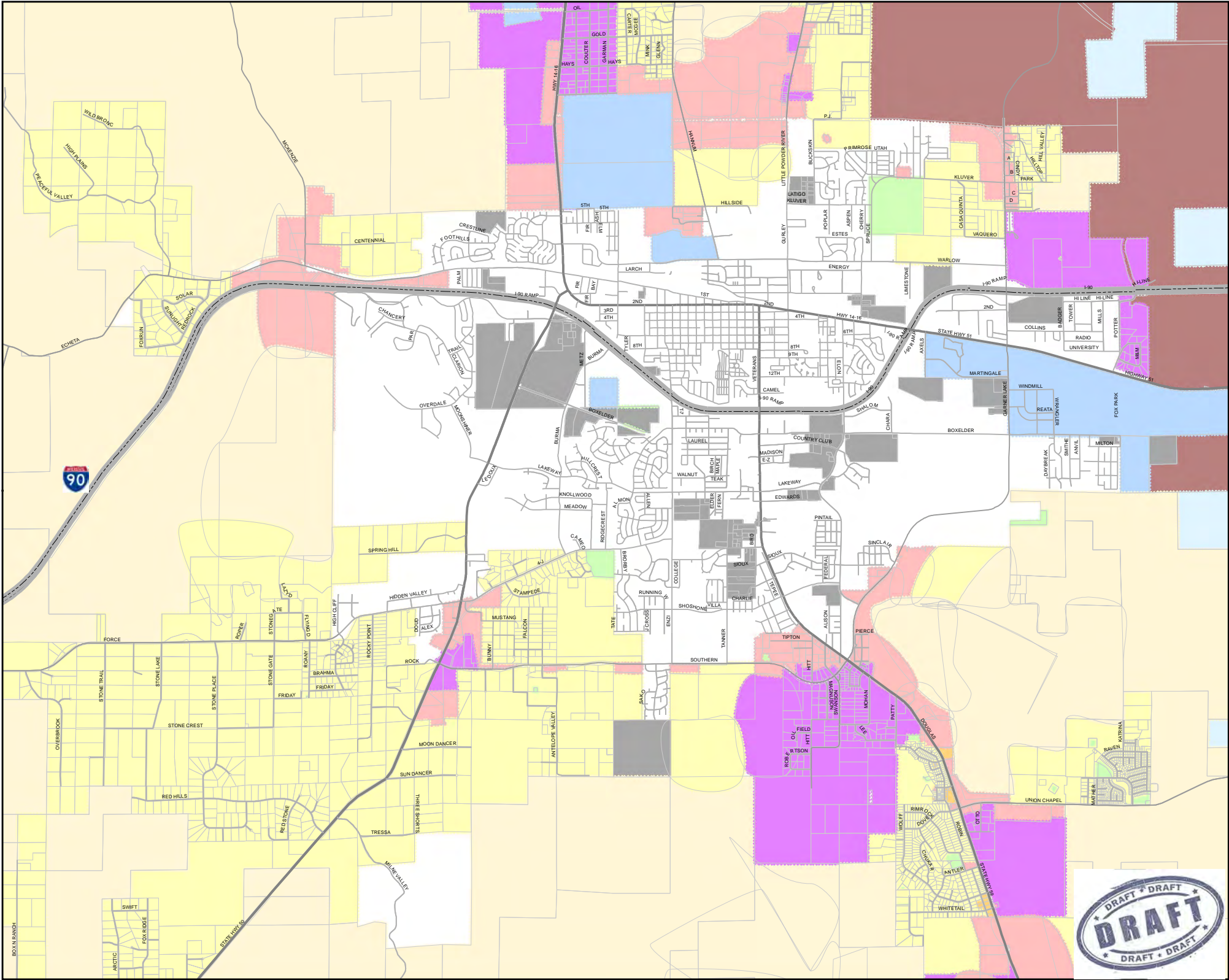


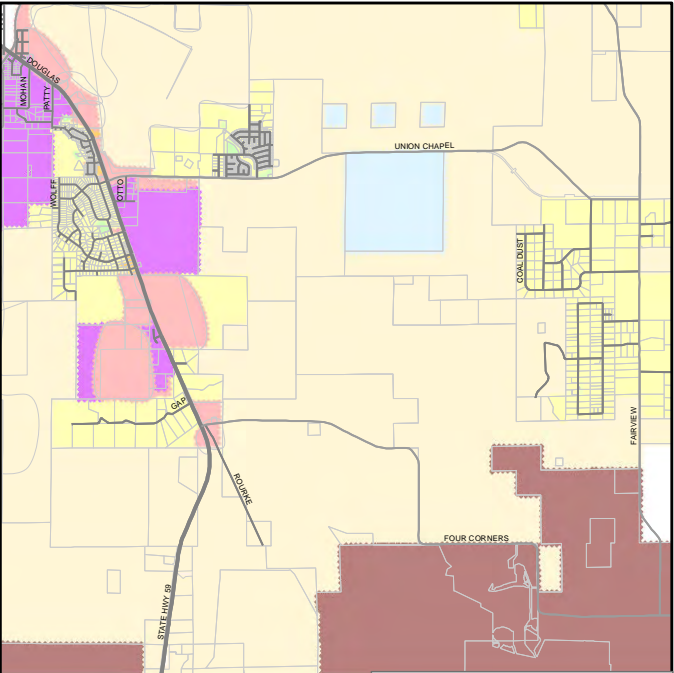
COMPREHENSIVE PLAN MAP SERIES

The following maps were developed during the planning process and were presented at the public open house meetings. The maps are provided in this Appendix to illustrate the types of geographic data that were considered in the development of this Plan.

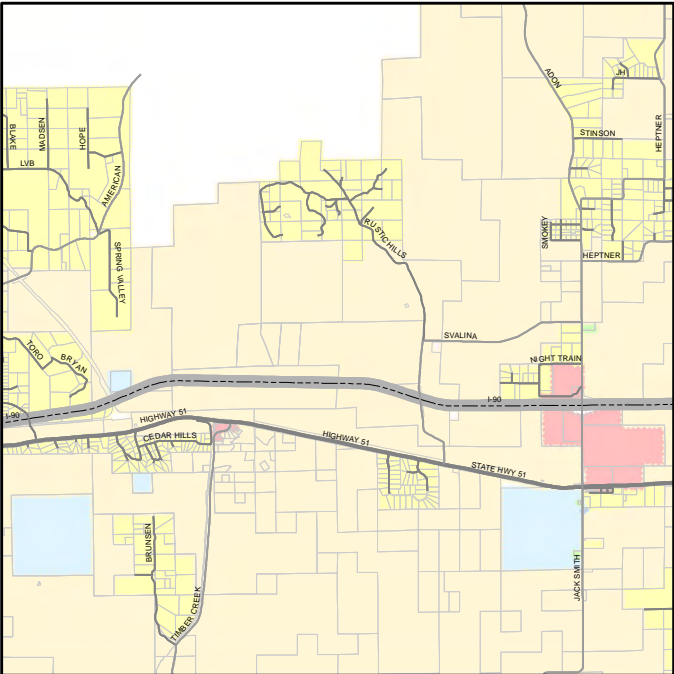
- ☐ County - Coal Mines
- ☐ County - Population Density
- ☐ County - Cropland
- ☐ County - Elevation
- ☐ County - Floodplains
- ☐ County - Soil Suitability for Septic Systems
- ☐ County - Slope
- ☐ County - Surface Management
- ☐ Gillette Joint Planning Area - Infrastructure
- ☐ Gillette Joint Planning Area - Subdivisions



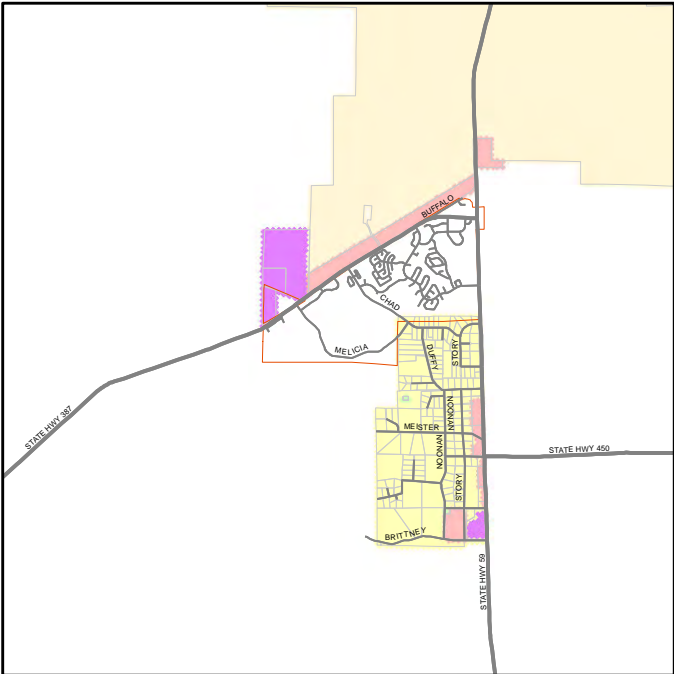
West Gillette



Southeast Gillette



Rozet Area



Wright Area

Future Land Use Categories

- | | |
|--------------------------|-------------------------|
| City Infill | Mining |
| Commercial | Parkland/Infrastructure |
| Federal/State/Public | Public Facilities |
| High Density Residential | Residential |
| Industrial | Rural General |

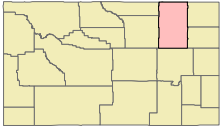
Additional Map Information

Future Land Use categories shown on this map were created by Campbell County, Wyoming. This map is made available to the public by the County and is not a legally recorded map or survey and is not intended to be used as such.

This map is created from compiled records, spatial information, and data from various sources. The source data may contain errors.

Campbell County shall not be liable for any damages or claims that arise out of the user's access to, or use of this map. This map is provided as reference only and should not be relied upon without reviewing the Official Future Land Use Map kept in the City Planning Division. This Future Land Use Map is a generalization that is not updated daily. Maps can be purchased in full size copies or small copies.

Campbell County



State of Wyoming



Campbell County's future...today

Leave Your Mark



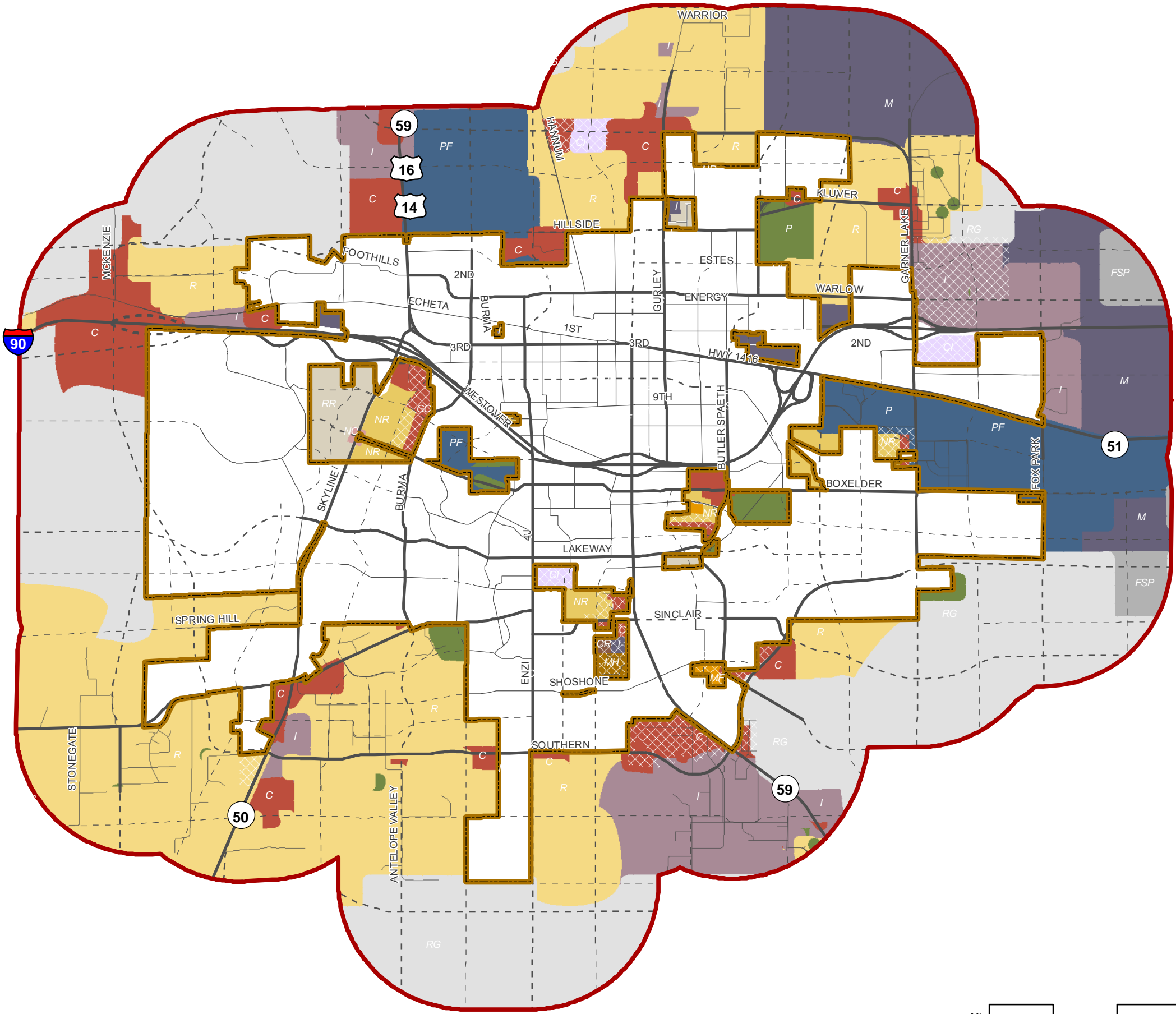
COMPREHENSIVE PLAN 2013

City-County Joint Future Land Use Plan

Legend

Joint Future Land Use Plan

- Rural General (RG)
- Residential (R)
- High-Density Residential (HDR)
- Commercial (C)
- Industrial (I)
- Commercial/Industrial (CI)
- Mining (M)
- Federal/State/Public (FSP)
- Public Facilities (PF)
- Parkland/Infrastructure (P)
- Mixed-Use Areas
- Municipal Boundary
- One-Mile Joint Planning Area



The One-Mile Joint Planning Area ("Statutory Boundary") is authorized by Wyoming Statute 34-12-103 as a one-mile radius extending from the City Limits, in which subdivision plats must be jointly approved by Campbell County and City of Gillette officials.

Map Disclaimer: This graphic representation highlights generalized areas for long-range planning purposes only. Any development outside the City Limits requires County approval. Data is not guaranteed for accuracy and may be subject to revision at any time without notification. Individual property owners should contact the City of Gillette's Engineering and Development Services Department with specific site questions.

Coal Mines



Coal Mine Map

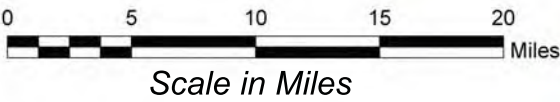
There are 13 active coal mines in the Wyoming portion of the Powder River Basin. These mines produced 426 million short tons in 2011. Coal mines in the Powder River Basin in Wyoming employed over 6,800 personnel in 2008.

Name	Acres
ANTELOPE MINE	920
CABALLO	19976
CABALLO-BELLE AYR	1092
JACOBS RANCH MINE	16188
BLACK THUNDER MINE	27224
NORTH ROCHELLE MINE	5092
BLACK THUNDER-NORTH ROCHELLE	1974
BLACK THUNDER - JACOBS RANCH	2724
BUCKSKIN MINE	8284
NORTH ANTELOPE ROCHELLE MINE	46016
COAL CREEK MINE	6854
DRY FORK MINE	3810
EAGLE BUTTE MINE	10344
SCHOOL CREEK MINE	23040
*WYODAK - ESTIMATE ONLY	3874
*CORDERO ROJO - ESTIMATE ONLY	15606
BELLE AYR	11896
RAWHIDE MINE	8890

* Estimate Only. No Map Provided



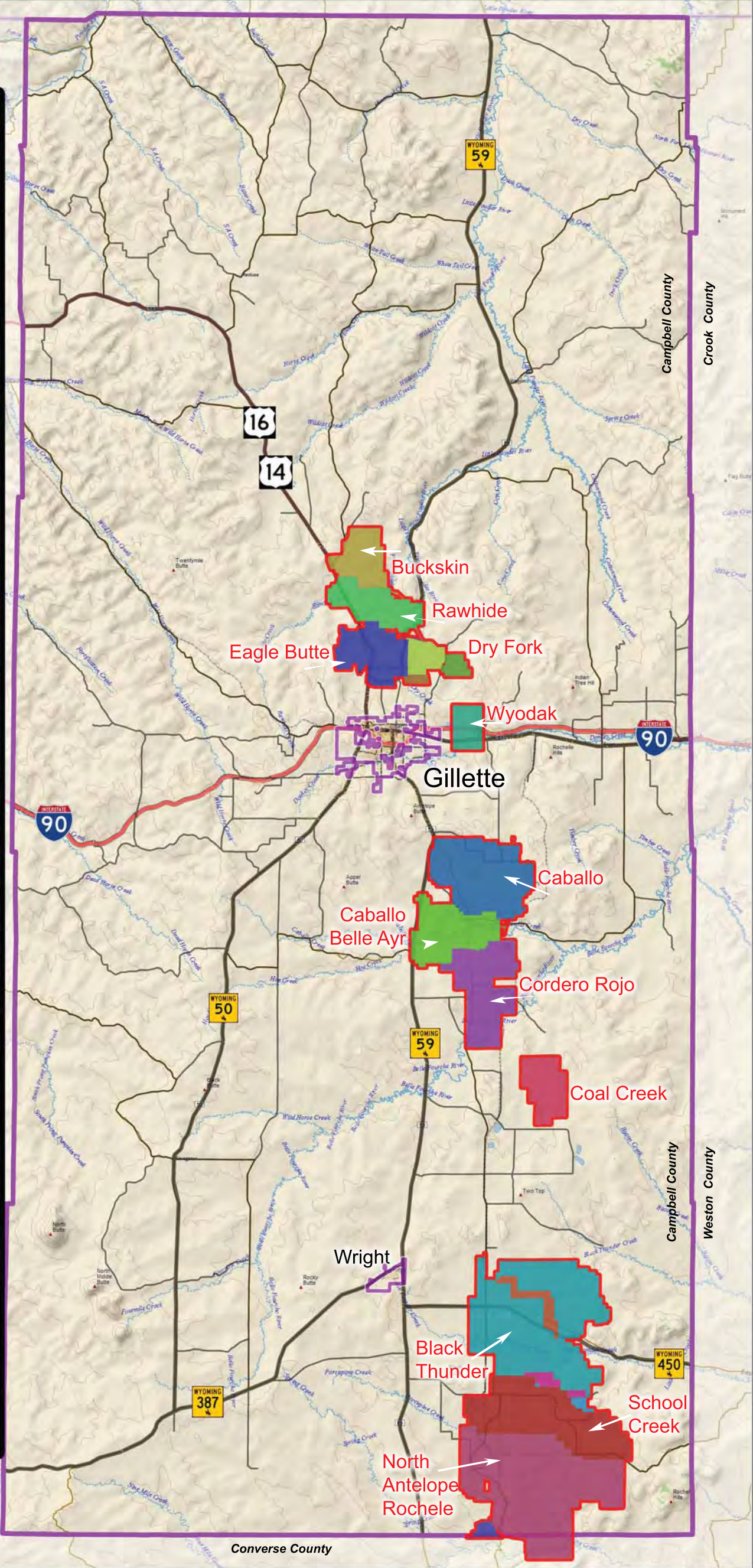
State of Wyoming

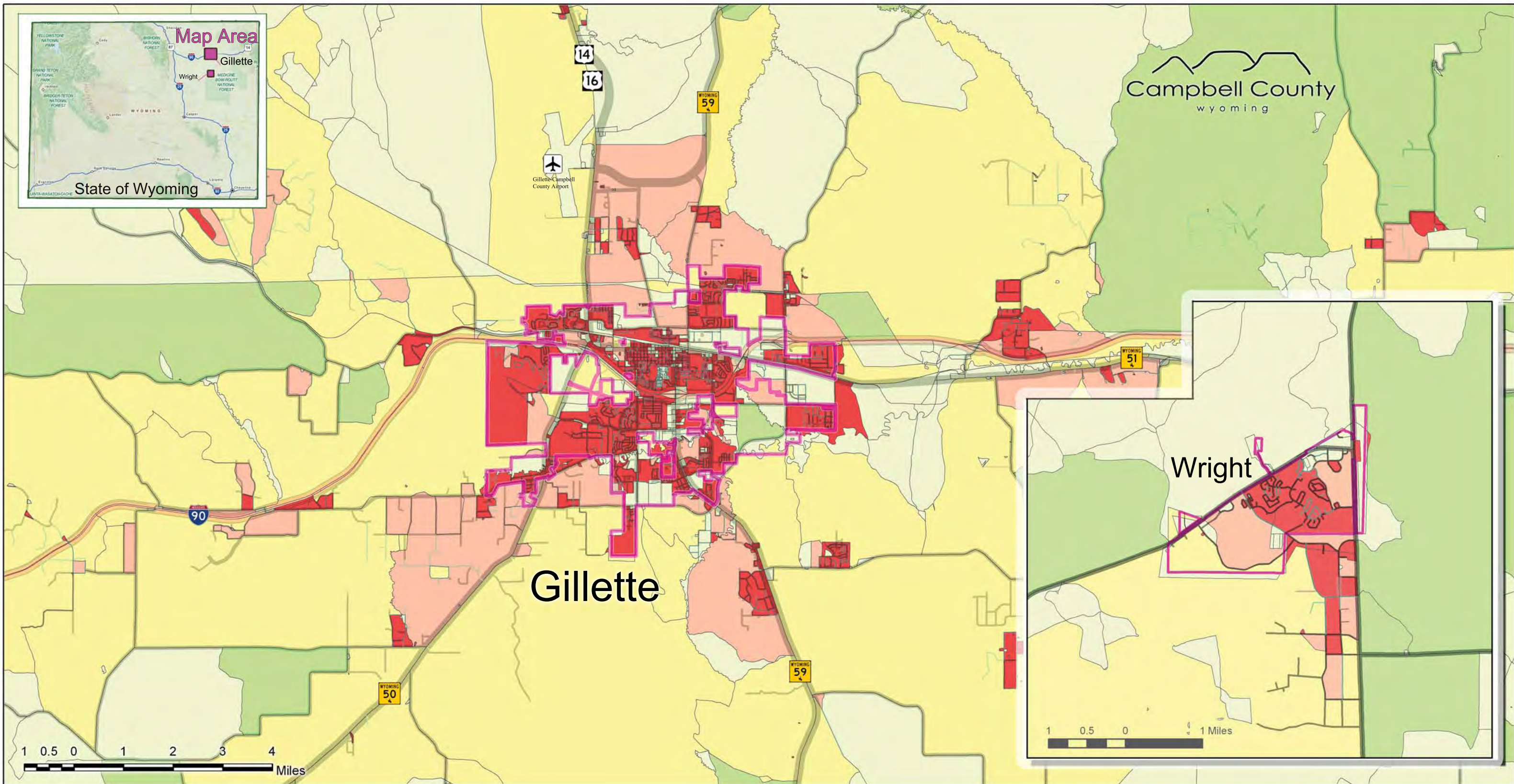


Campbell County's future...today



COMPREHENSIVE PLAN 2013





Population Density (2010)

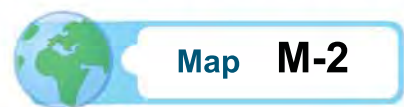
This map shows population of people, per square mile, for the Gillette and Wright regions. Population density is the measure of the number of people per unit area.

POPULATION DENSITY: 2010 U.S. Census data. Block group data layer for Campbell county. Population density was calculated by dividing the 100 percent population count by area.

2010 Census block geography and the 2010 Census population and housing unit counts were obtained from TIGER/Line Shapefiles. Data provided by the United States Commerce Department, Census Bureau. 2010 extracts containing geographic and cartographic information from the Census Bureau's MAF/TIGER® (Master Address File/Topologically Integrated Geographic Encoding and Referencing) database.

Number of People Per Square Mile

- 0 - 1 People Per Sq. Mile
- 2 - 5 People Per Sq. Mile
- 6 - 50 People Per Sq. Mile
- 51 - 200 People Per Sq. Mile
- > 200 People Per Sq. Mile
- City Boundary



Croplands

Land Cover Categories (by decreasing acreage)

Agriculture

- Grassland Herbaceous
- Alfalfa
- Fallow/Idle Cropland
- Winter Wheat
- Spring Wheat
- Other Hay/Non Alfalfa

- Oats
- Barley
- Millet

- Pasture/Hay
- Triticale
- Clover/Wildflowers
- Peas
- Lentils
- Corn

- Sod/Grass Seed

Non-Agriculture

- Shrubland
- Evergreen Forest
- Barren
- Woody Wetlands
- Developed/Open Space
- Developed/Low Intensity

Other Features

- City Boundary

Additional Map Information

This map shows the 2011 USDA, NASS Cropland Data which is a crop-specific land cover data layer that has a ground resolution of 30 meters. The CDL is produced using satellite imagery and collected during the current growing season. The purpose of the Cropland Data Layer Program is to use satellite imagery to (1) provide acreage estimates to the Agricultural Statistics Board for the state's major commodities and (2) produce digital, crop-specific, categorized geo-referenced output products.

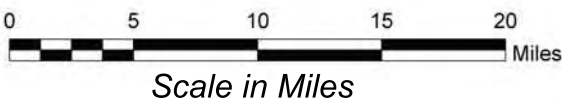
Only top sixteen (16) agriculture categories are listed. The top six (6) non-agriculture categories are listed.

Source: United States Department of Agriculture (USDA), National Agricultural Statistics Service (NASS), Research and Development Division (RDD) Spatial Analysis Research Section. (SARS).

Campbell County



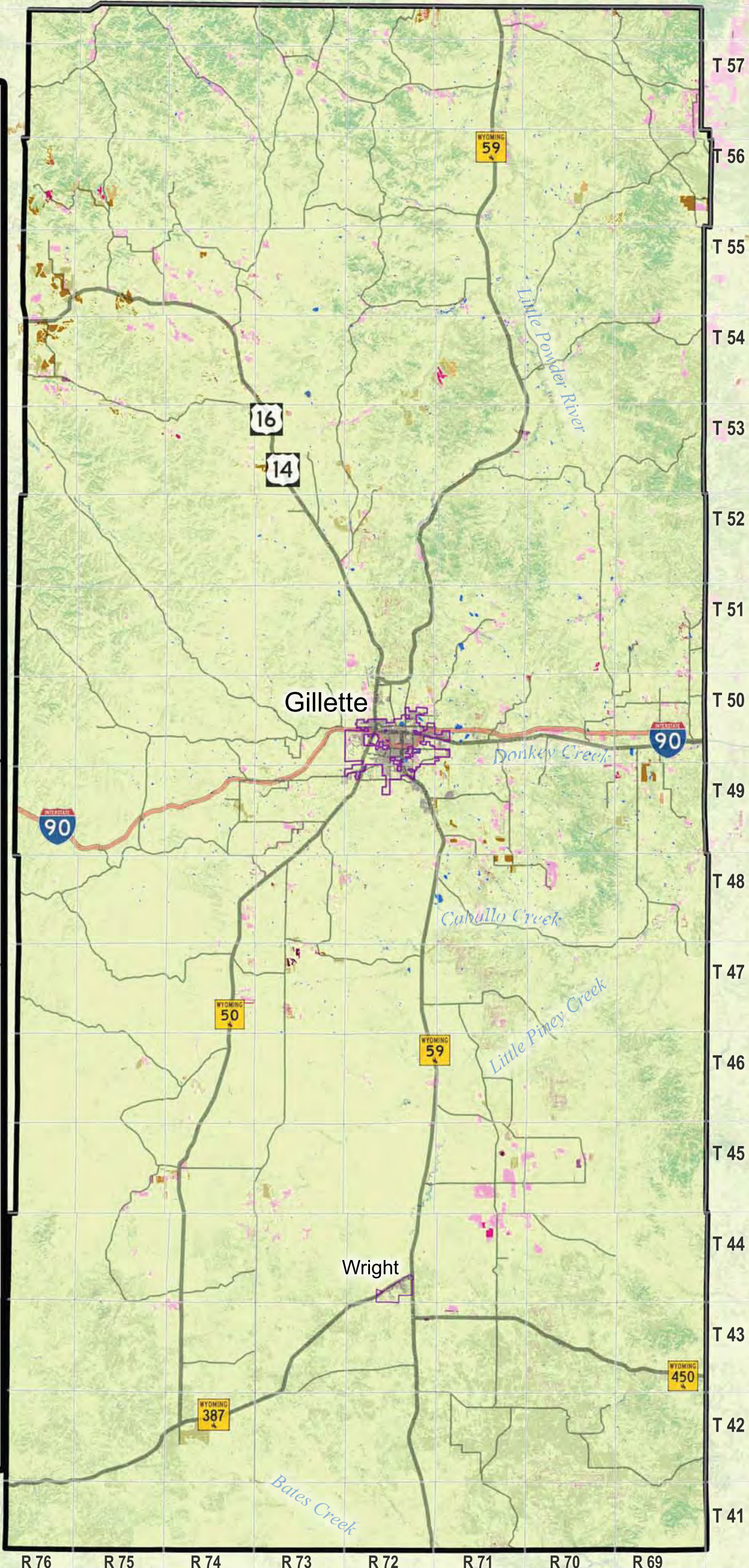
State of Wyoming



Campbell County's future...today



COMPREHENSIVE PLAN 2013



Elevation

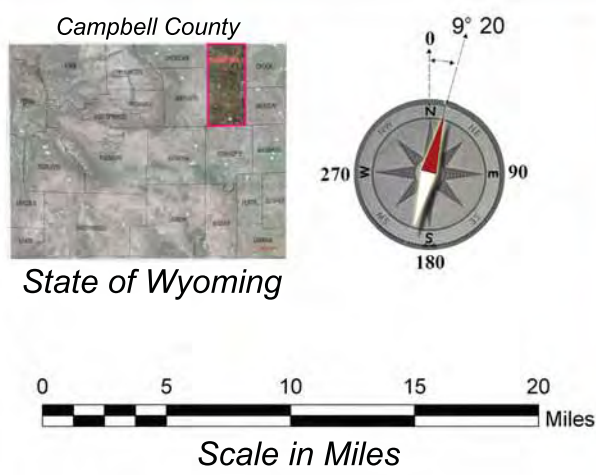
Elevation Map



The Campbell County Elevation Map is portrayed using a hillshade map combined with a color ramp which depicts elevation using a range of colors.

Elevation data was derived using the National Elevation Dataset (NED) which is the primary elevation data product of the USGS.

The NED is a seamless dataset with the best available raster elevation data of the conterminous United States. The NED is derived from diverse source data that are processed to a common coordinate system and unit of vertical measure.



Campbell County's future...today

