

CERTIFICATE OF DEDICATION

THE ABOVE OR FOREGOING RESUBDIVISION OF LOTS 17 AND 18, BLOCK 1 OF WINLAND INDUSTRIAL PARK AS IT APPEARS ON THIS PLAT, IS MADE WITH THE FREE CONSENT, AND IN ACCORDANCE WITH THE DESIRES OF THE UNDERSIGNED OWNERS AND PROPRIETORS, AND THAT THIS IS A CORRECT PLAT OF THE AREA AS IT IS DIVIDED IN LOTS, BLOCKS, STREETS AND EASEMENTS, AND,

THAT THE UNDERSIGNED OWNERS AND PROPRIETORS OF THE LAND SHOWN AND DESCRIBED ON THIS PLAT DO HEREBY DEDICATE TO THE PUBLIC FOR PERPETUAL PUBLIC USE ALL STREETS, ALLEYS, EASEMENTS AND OTHER LANDS WITHIN THE BOUNDARY LINES OF THE PLAT AS INDICATED AND NOT ALREADY OTHERWISE DEDICATED FOR PUBLIC USE. UTILITY EASEMENTS AS DESIGNATED ON THIS PLAT ARE HEREBY DEDICATED TO THE PUBLIC FOR PERPETUAL PUBLIC USE FOR INSTALLING, REPAIRING, REPLACING AND MAINTAINING WATER LINES, SEWERS, GAS LINES, ELECTRICAL LINES, TELEPHONE LINES, CABLE TV LINES AND OTHER FORMS AND TYPES OF PUBLIC UTILITIES NOW AND HEREAFTER GENERALLY UTILITY BY THE PUBLIC.

ALL RIGHTS UNDER AND BY VIRTUE OF THE HOMESTEAD EXEMPTION LAWS OF THE STATE OF WYOMING ARE HEREBY WAIVED AND RELEASED.

EXECUTED THIS _____ DAY OF _____ A.D., 20____, BY:

PRISM INVESTMENTS, LLC, ANTHONY T BROWNING, OWNER

STATE OF WYOMING)
JSS.
CAMPBELL COUNTY)

THE FOREGOING INSTRUMENT WAS ACKNOWLEDGED BEFORE ME THIS _____ DAY OF _____ A.D., 20____, BY PRISM INVESTMENTS, LLC, ANTHONY T BROWNING, OWNER, AS A FREE AND VOLUNTARY ACT AND DEED.
WITNESS MY HAND AND OFFICIAL SEAL.

NOTARY PUBLIC
MY COMMISSION EXPIRES:_____

EXECUTED THIS _____ DAY OF _____ A.D., 20____, BY:

PRISM INVESTMENTS, LLC, JOYCE BROWNING, OWNER

STATE OF WYOMING)
JSS.
CAMPBELL COUNTY)

THE FOREGOING INSTRUMENT WAS ACKNOWLEDGED BEFORE ME THIS _____ DAY OF _____ A.D., 20____, BY PRISM INVESTMENTS, LLC, JOYCE BROWNING, OWNER AS A FREE AND VOLUNTARY ACT AND DEED.
WITNESS MY HAND AND OFFICIAL SEAL.

NOTARY PUBLIC
MY COMMISSION EXPIRES:_____

CERTIFICATE OF APPROVAL BY THE CAMPBELL COUNTY BOARD OF COUNTY COMMISSIONERS

APPROVED FOR FILING BY THE UNDERSIGNED BOARD OF COUNTY COMMISSIONERS IN AND FOR THE COUNTY OF CAMPBELL, STATE OF WYOMING, THIS _____ DAY OF _____ A.D., 20____.

CHAIRMAN OF THE BOARD
ATTEST:

CLERK OF BOARD

CERTIFICATE OF APPROVAL BY THE CAMPBELL COUNTY PLANNING COMMISSION

APPROVED BY THE CAMPBELL COUNTY PLANNING COMMISSION THIS _____ DAY OF _____ A.D., 20____.

CHAIRMAN OF THE PLANNING COMMISSION
ATTEST:

CLERK OF THE PLANNING COMMISSION

CERTIFICATE OF APPROVAL BY THE CITY OF GILLETTE PLANNING COMMISSION

APPROVED BY THE CITY OF GILLETTE PLANNING COMMISSION THIS _____ DAY OF _____ A.D., 20____.

CHAIRMAN OF THE PLANNING COMMISSION
ATTEST:

SECRETARY OF THE PLANNING COMMISSION

CERTIFICATE OF APPROVAL BY THE CITY COUNCIL OF THE CITY OF GILLETTE, WYOMING

APPROVED BY THE CITY COUNCIL OF THE CITY OF GILLETTE, WYOMING THIS _____ DAY OF _____ A.D., 20____.

MAYOR
ATTEST:

CITY CLERK

DECLARATION VACATING PREVIOUS PLATTING

THIS PLAT IS THE RESUBDIVISION OF LOTS 17 AND 18, BLOCK 1 OF WINLAND INDUSTRIAL PARK, AS RECORDED IN BOOK 4 OF PLATS, PAGE 212, OF THE RECORDS OF THE CAMPBELL COUNTY CLERK. ALL EARLIER PLATS OR PORTIONS THEREOF, ENCOMPASSED BY THE BOUNDARIES OF THIS PLAT ARE HEREBY VACATED.

CERTIFICATE FOR RECORDING BY THE COUNTY CLERK AND RECORDER

THIS PLAT WAS FILED FOR RECORD IN THE OFFICE OF THE CLERK AND RECORDER AT _____ O'CLOCK _____ M., THIS _____ DAY OF _____ 20____, AND IS DULY RECORDED IN BOOK NUMBER _____ PAGE NUMBER _____.

COUNTY CLERK

SUBDIVISION SUMMARY

TOTAL AREA: 0.95 ACRES
TOTAL LOTS: 1 LOTS
FLOOD PLAIN DESIGNATION ZONE X

SURVEYOR'S CERTIFICATE

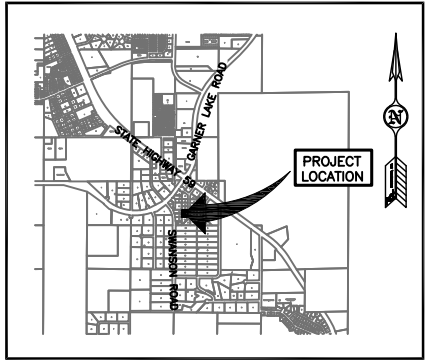
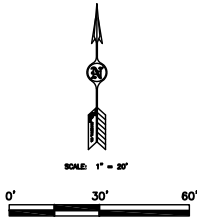
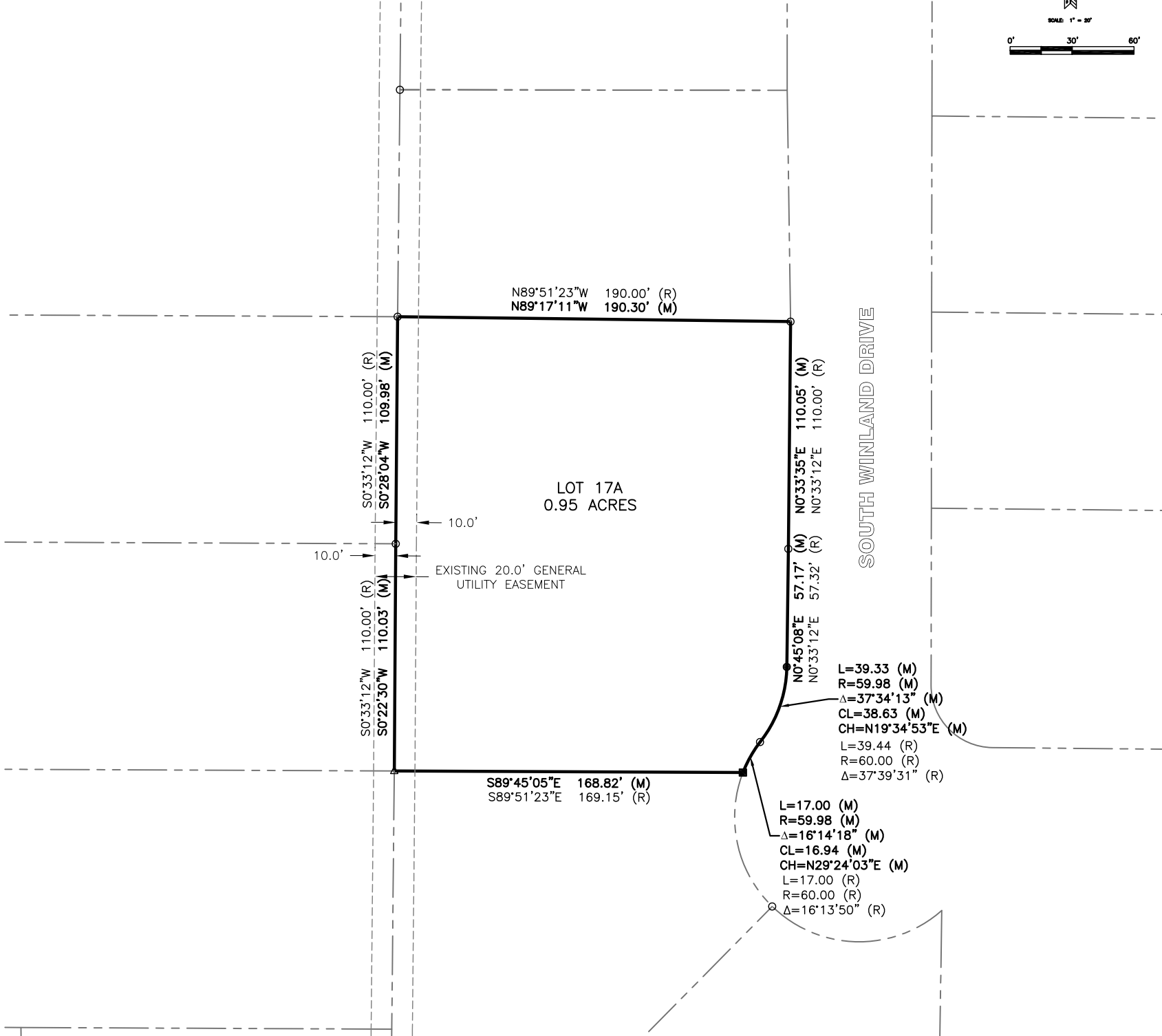
I, DAVID L. VLIEM, DO HEREBY CERTIFY THAT I AM A REGISTERED LAND SURVEYOR, LICENSED UNDER THE LAWS OF THE STATE OF WYOMING, THAT THIS SUBDIVISION PLAT IS A TRUE, CORRECT AND COMPLETE PLAT OF THE RESUBDIVISION OF LOTS 17 AND 18, BLOCK 1 OF WINLAND INDUSTRIAL PARK, LOCATED IN THE NW1/4NE1/4 SECTION 11, T49N, R72W, OF THE 6TH P.M., CAMPBELL COUNTY, WYOMING, AS LAID OUT, PLATTED, DEDICATED AND SHOWN HEREON, THAT SUCH PLAT WAS MADE FROM AN ACCURATE SURVEY OF SAID PROPERTY BY ME AND UNDER MY SUPERVISION.

- NO PROPOSED CENTRAL WATER SUPPLY SYSTEM
- NO PROPOSED CENTRALIZED SEWAGE SYSTEM
- NO PUBLIC MAINTENANCE OF STREETS OR ROADS
- THE SURFACE ESTATE OF THE LAND TO BE SUBDIVIDED IS SUBJECT TO FULL AND EFFECTIVE DEVELOPMENT OF THE MINERAL ESTATE.

RESUBDIVISION OF LOTS 17 AND 18, BLOCK 1 OF WINLAND INDUSTRIAL PARK

TO BE KNOWN AS LOT 17A, BLOCK 1 OF WINLAND INDUSTRIAL PARK

LOCATED IN THE NW1/4NE1/4 SECTION 11, T49N, R72W, OF THE 6TH P.M., CAMPBELL COUNTY, WYOMING



VICINITY MAP

LEGEND

- FOUND BARE REBAR
- △ FOUND 1/2" IRON PIPE
- SET 2" ø ALUMINUM CAP (LS #6872)
- SET PK NAIL INTO TOP OF POLY STORM DRAIN PIPE
- BOUNDARY
- - - EXISTING EASEMENT

BENCHMARK

BASED ON CITY OF GILLETTE VERTICAL CONTROL MONUMENT #20 ELEVATION= 4550.60

BASIS OF BEARING

THE CITY OF GILLETTE HORIZONTAL CONTROL NETWORK
***ALL MEASURED DISTANCES ARE GRID. FOR CONVERSION TO SURFACE, MULTIPLY BY 1.00028964.
***ALL AREAS ARE CALCULATED AT SURFACE.

Prepared for:

BROWNING ELECTRIC

5416 S. WINLAND DRIVE
GILLETTE, WYOMING 82718
307-685-6587

PCA ENGINEERING, INC.
4506 Wigwam Blvd.
P.O. Box 2185
Gillette, Wyoming 82718
307-687-0600

COPYRIGHT © ALL RIGHTS RESERVED BY PCA ENGINEERING, INC.

Drawn by: SM Design by: SM Reviewed by: DV

Revision Date Revision Description

PCA Project Number: 133641.00

Plot Date: Nov 11, 2013 - 10:28am

G:\PROJECTS\13364100 Browning Electric Lot Line Removal\Des

Welp_C30.dwg

Layout: Plat 1

X-Ref: ...

RESUBDIVISION OF LOTS 17 AND 18, BLOCK 1 OF WINLAND INDUSTRIAL PARK
LOCATED IN THE NW1/4NE1/4 SECTION 11, T49N, R72W, OF THE 6TH P.M., CAMPBELL COUNTY, WYOMING

FINAL PLAT