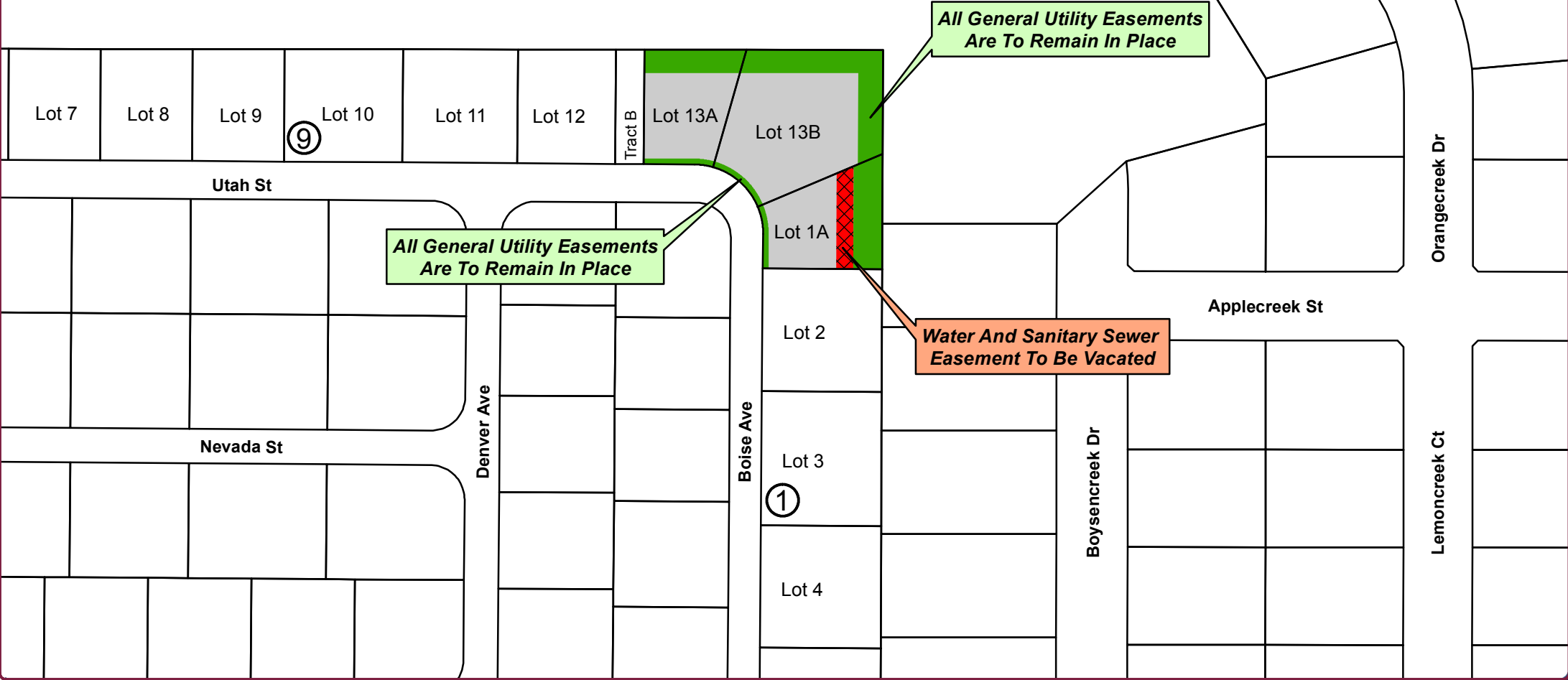


Exhibit B
Water And Sanitary Sewer Easement
to be vacated from the plat titled...

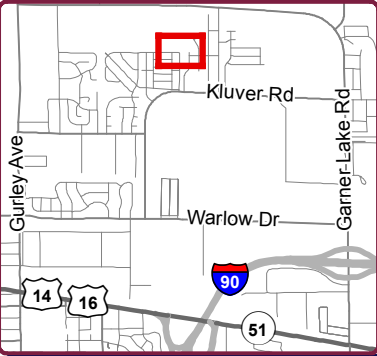
Resubdivision of Lot 1, Block 1 And Lot 13, Block 9
Northland Village Mobile Home Park
First Filing, Phase IV

Found in Book 6 of Plats, Page 102



CITY OF GILLETTE

GIS Division
P.O. Box 3003
Gillette, Wyoming 82717-3003
Phone (307) 686-5364
www.gillettewy.gov



Legend

- Parcels
- Easements to Remain
- Easements to be Vacated

Y:\GIS Work\EDS\Planning\Northland Village\Easement Vacates
Northland Village\Easement Vacates\Exhibit B.mxd

THE INFORMATION ON THIS DRAWING WAS OBTAINED FROM
RECORD AND DESIGN DRAWINGS. THE CITY OF GILLETTE MAKES NO
GUARANTEE REGARDING THE ACCURACY OF THIS DRAWING OR
THE INFORMATION CONTAINED THEREIN.



Exhibit B
Northland Village
Easement Vacates

October 18, 2013

Productivity **Service With P.R.I.D.E.** Enthusiasm
Responsibility Integrity Dedication