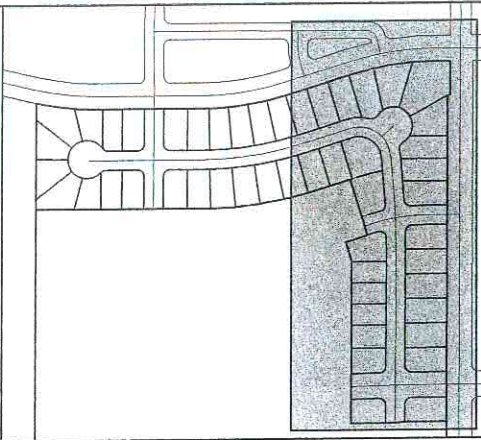


NOTES:

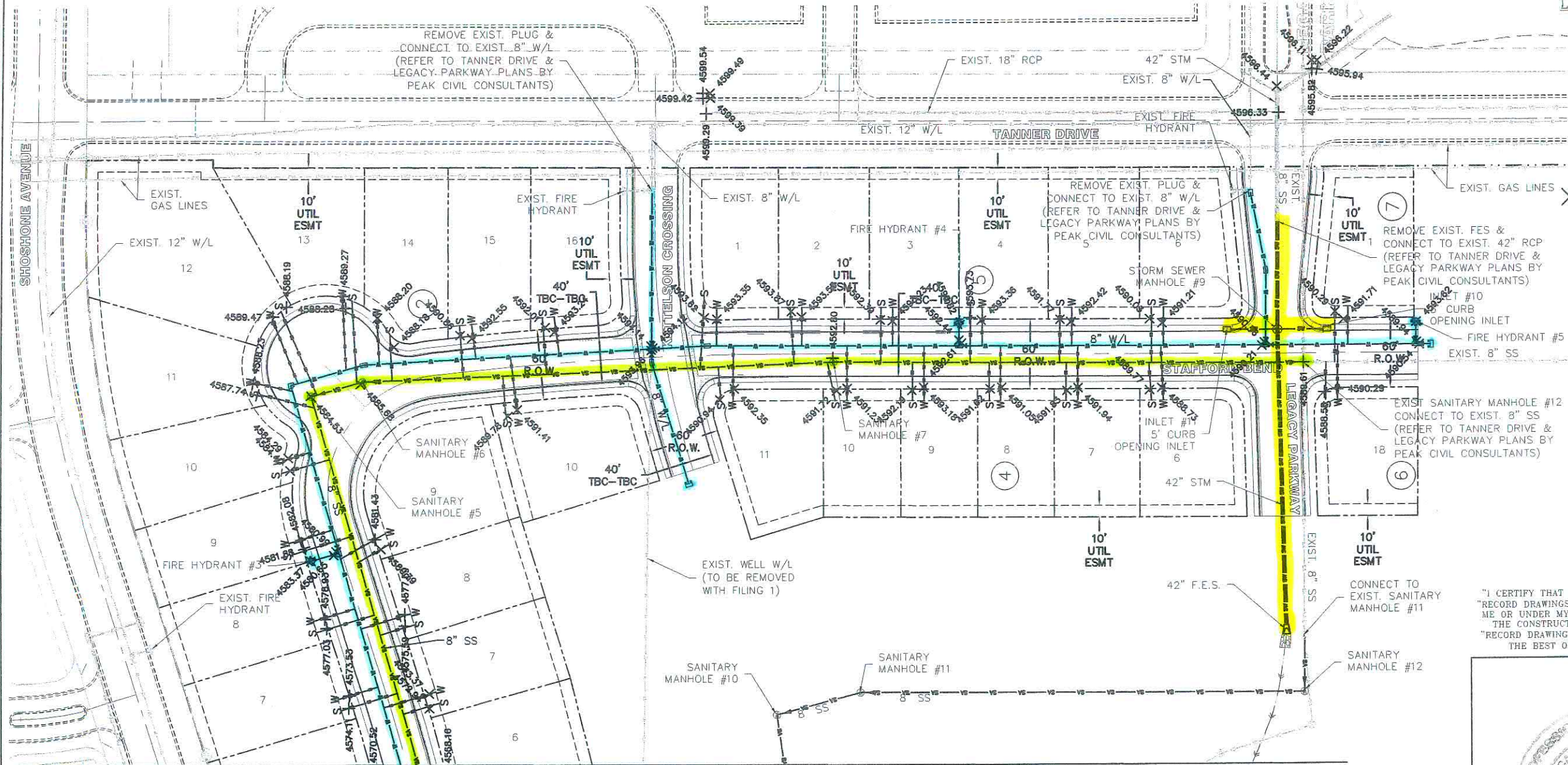
1. REFER TO SHEETS WA-1-WA-6 FOR WATERLINE CONSTRUCTION INFORMATION.
2. REFER TO SHEETS SA-1-SA-8 FOR SANITARY SEWER CONSTRUCTION INFORMATION.
3. REFER TO SHEETS SW-1-SW-3 FOR STORM SEWER CONSTRUCTION INFORMATION.

RECORD DRAWINGS



LOCATION MAP
N.T.S.

REV.	#	REVISION DESCRIPTION	DATE	BY
1	1			
2	2			
3	3			
4	4			
5	5			



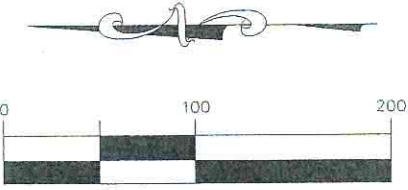
AS-BUILT DRAWING
AS-BUILT INFORMATION
FURNISHED BY: DOYLE LAND SURVEYING
OCTOBER 26 AND
NOVEMBER 13, 2012
DRAWING NOT FOR
CONSTRUCTION

NOTE: ONLY WATER AND
SANITARY SEWER FACILITIES
INSTALLED AT TIME OF
INTERIM ACCEPTANCE
ASBUILT PREPARATION.

"I CERTIFY THAT THE CONSTRUCTION INSPECTION AND
"RECORD DRAWINGS" PREPARATION WERE PERFORMED BY
ME OR UNDER MY DIRECT CONTROL AND SUPERVISION.
THE CONSTRUCTION DETAILS AS SHOWN ON THESE
"RECORD DRAWINGS" ARE ACCURATE AND COMPLETE TO
THE BEST OF MY KNOWLEDGE AND BELIEF."

AS-BUILT LEGEND

	AS BUILT POINT LABEL
4500.00	CORRECTED VALUE AS BUILT
4501.00	BUILT



(IN FEET)
1 inch = 100 ft.



CALL BEFORE YOU DIG
ONE-CALL OF
WYOMING
1-800-849-2476
OR
811
UTILITY NOTIFICATION CENTER OF WYOMING

BENCHMARK:
CITY OF GILLETTE VCM #36 AT THE END
OF PAVEMENT ON THE WEST END OF
SHOSHONE AT TANNER
NORTHING: 1368193, EASTING: 589055
ELEVATION: 4622.555



DATE: 11/24/13
JOB NO: 1222
DRAWN BY: CC
APPROVED BY: CC
OVERALL UTILITY PLAN-2
OU-2