



DESIGN DRAWINGS FOR:
ALLEY PMS 2014
CITY PROJECT NO. 14EN11

OWNER:

CITY OF GILLETTE
P.O. BOX 3003
201 E. 5TH STREET
GILLETTE, WYOMING
PHONE # 307-686-5265
FAX # 307-686-0952

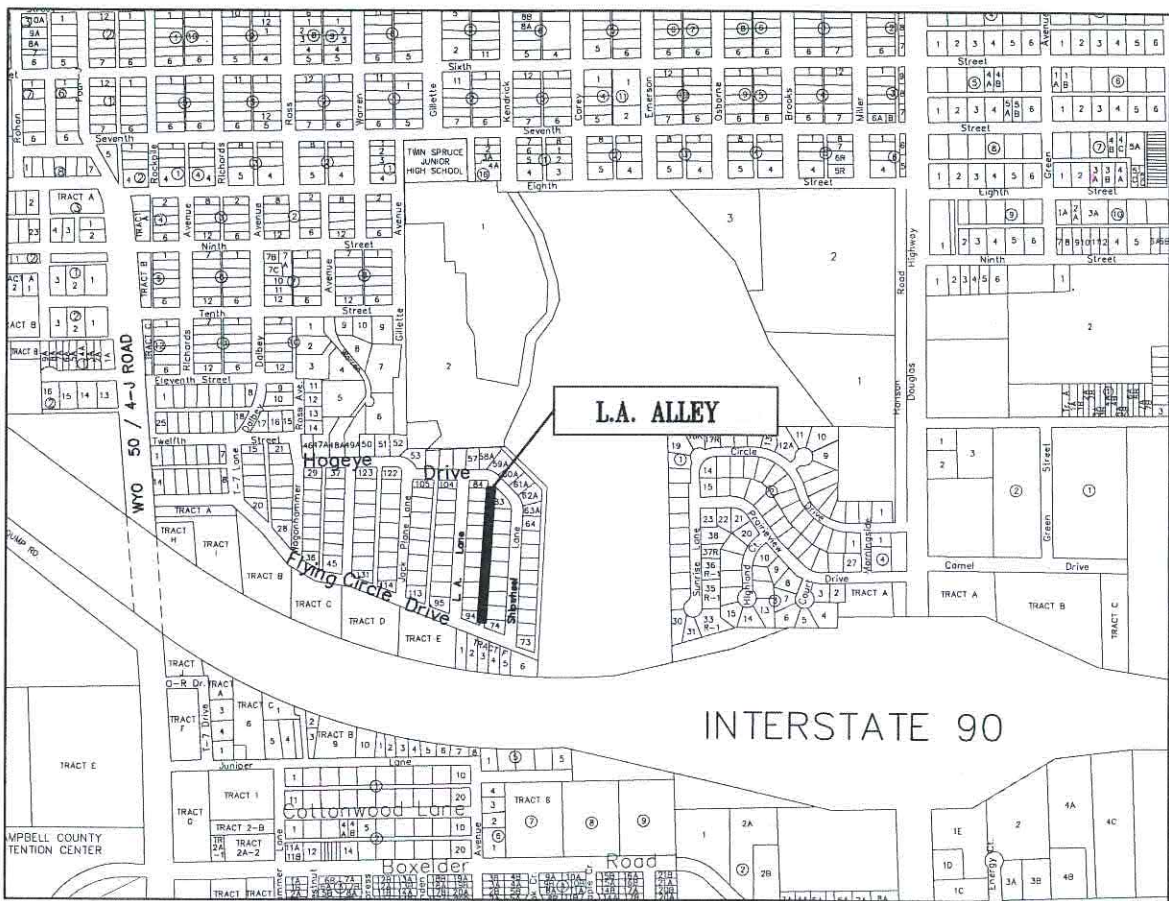
ENGINEER:

BRUCE ENGINEERING, INC.

P.O. Box 2284,
GILLETTE, WY 82716

(307) 686-2252 FAX: (307) 687-7163

CIVIL ENGINEERING • LAND SURVEYING MANAGEMENT



VICINITY MAP
N.T.S.

"L.A. ALLEY"

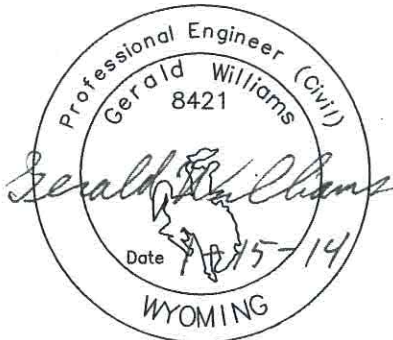
BETWEEN L.A. LANE AND SHIPWHEEL LANE.
FROM FLYING CIRCLE DRIVE TO HOGEVE DRIVE
ALLEY PMS 14EN11

AUTHORIZED BY:

Kurt Submale 6946 1/15/14
CITY ENGINEER P.E. NO. DATE



CALL BEFORE YOU DIG
ONE-CALL OF
WYOMING
1-800-849-2476
OR
811
UTILITY NOTIFICATION CENTER OF WYOMING



I GERALD WILLIAMS CERTIFY HEREBY DECLARE THAT
THESE PLANS WERE PREPARED UNDER MY DIRECT
SUPERVISION AS A DULY REGISTERED PROFESSIONAL
ENGINEER IN THE STATE OF WYOMING.

REV. #	REVISION DESCRIPTION	DATE	BY

ALLEY PMS 2014
PROJECT NO. 14EN11
COVER SHEET

BRUCE ENGINEERING, INC.
P.O. Box 2284
GILLETTE, WY 82716
(307) 686-2252 FAX: (307) 687-7163
CIVIL ENGINEERING LAND SURVEYING MANAGEMENT

DATE: 08/08/2013
JOB NO: 14-055
DRAWN BY: KAL
APPROVED BY: JH