

CERTIFICATE OF DEDICATION

KNOW ALL MEN BY THESE PRESENTS THAT THE UNDERSIGNED THE JON FREDERICK PERSIAN AND JENEAN KAY PERSIAN REVOCABLE TRUST AND DMK DEVELOPMENT-GILLETTE, BEING THE OWNERS, PROPRIETORS OR PARTIES OF INTEREST IN THE LAND SHOWN ON THIS PLAT, DO HEREBY CERTIFY THAT THE FOREGOING PLAT DESIGNATED AS THE RESUBDIVISION OF LOTS 1A & 1B AND VACATED 60' RIGHT OF WAY OF SUNBURST SUBDIVISION NO. 4 OF THE RESUBDIVISION OF LOT 1, OF THE RESUBDIVISION OF TRACT E OF SUNBURST SUBDIVISION NO. 4, LOCATED IN A PORTION OF THE SE1/4NE1/4 SECTION 3 AND THE SW1/4NW1/4 SECTION 2, TOWNSHIP 49 NORTH, RANGE 72 WEST, 6TH PRINCIPAL MERIDIAN, GILLETTE, CAMPBELL COUNTY, WYOMING, AND IS MORE PARTICULARLY DESCRIBED AS FOLLOWS:

LOT 1, RESUBDIVISION OF TRACT E SUNBURST SUBDIVISION NO. 4 AND CONTAINS AN AREA OF 8.03 ACRES, MORE OR LESS, AND THAT THIS SUBDIVISION, AS IT IS DESCRIBED AND AS IT APPEARS ON THIS PLAT, IS MADE WITH THE FREE CONSENT AND IN ACCORDANCE WITH THE DESIRES OF THE UNDERSIGNED OWNER AND PROPRIETOR, AND THAT THIS IS A CORRECT PLAT OF THE AREA AS IT IS DIVIDED INTO LOTS, BLOCKS, STREETS AND EASEMENTS.

THAT THE UNDERSIGNED OWNER OF THE LAND SHOWN AND DESCRIBED ON THIS PLAT DOES HEREBY DEDICATE TO THE CITY OF GILLETTE AND ITS LICENSEES FOR PERPETUAL PUBLIC USE, ALL STREETS, ALLEYS, EASEMENTS AND OTHER PUBLIC LANDS WITHIN THE BOUNDARY LINES OF THE PLAT, AS INDICATED, AND NOT ALREADY OTHERWISE DEDICATED FOR PUBLIC USE.

UTILITY EASEMENTS, AS DESIGNATED ON THIS PLAT, ARE HEREBY DEDICATED TO THE CITY OF GILLETTE AND ITS LICENSEES FOR PERPETUAL PUBLIC USE, FOR THE PURPOSE OF INSTALLING, REPAIRING, REINSTALLING, REPLACING AND MAINTAINING SEWERS, WATER LINES, GAS LINES, ELECTRIC LINES, TELEPHONE LINES, CABLE TV LINES AND OTHER FORMS AND TYPES OF PUBLIC UTILITIES NOW OR HEREFTER GENERALLY UTILIZED BY THE PUBLIC.

DRAINAGE EASEMENTS, AS DESIGNATED ON THIS PLAT, ARE HEREBY DEDICATED TO THE CITY OF GILLETTE AND ITS LICENSEES FOR PUBLIC USE, TO ACCOMMODATE THE FLOW OR STORAGE OF STORM WATERS AND SHALL BE KEPT FREE OF ALL STRUCTURES OR OTHER IMPEDIMENTS.

ALL RIGHTS UNDER AND BY VIRTUE OF THE HOMESTEAD EXEMPTION LAWS OF THE STATE OF WYOMING ARE HEREBY WAIVED AND RELEASED.

EXECUTED THIS _____ DAY OF _____ A.D., 20____, BY:

THE JON FREDERICK PERSIAN AND JENEAN KAY PERSIAN REVOCABLE TRUST, JENEAN KAY PERSIAN, TRUSTEE

STATE OF WYOMING)
)SS.
CAMPBELL COUNTY)

THE FOREGOING INSTRUMENT WAS ACKNOWLEDGED BEFORE ME THIS

____ DAY OF _____ A.D., 20____, BY THE JON FREDERICK PERSIAN AND JENEAN KAY PERSIAN REVOCABLE TRUST, JENEAN KAY PERSIAN, TRUSTEE,
AS A FREE AND VOLUNTARY ACT AND DEED.

WITNESS MY HAND AND OFFICIAL SEAL.

NOTARY PUBLIC

MY COMMISSION EXPIRES: _____

EXECUTED THIS _____ DAY OF _____ A.D., 20____, BY:

DMK DEVELOPMENT-GILLETTE DON KETTLER

STATE OF WYOMING)
)SS.
CAMPBELL COUNTY)

THE FOREGOING INSTRUMENT WAS ACKNOWLEDGED BEFORE ME THIS

____ DAY OF _____ A.D., 20____, BY THE DMK DEVELOPMENT-GILLETTE, DON KETTLER,
AS A FREE AND VOLUNTARY ACT AND DEED.

WITNESS MY HAND AND OFFICIAL SEAL.

NOTARY PUBLIC

MY COMMISSION EXPIRES: _____

CERTIFICATE OF REVIEW OF THE CITY ENGINEER

DATA ON THIS PLAT REVIEWED THIS _____ DAY OF _____ A.D., 20____ BY THE CITY ENGINEER OF GILLETTE WYOMING.

CITY ENGINEER

CERTIFICATE OF APPROVAL BY THE CITY COUNCIL OF THE CITY OF GILLETTE, WYOMING

APPROVED BY THE CITY COUNCIL OF THE CITY OF GILLETTE, WYOMING THIS _____ DAY OF _____ A.D., 20____.

MAYOR

CITY CLERK

CERTIFICATE OF APPROVAL BY THE CITY OF GILLETTE PLANNING COMMISSION

APPROVED BY THE CITY OF GILLETTE PLANNING COMMISSION THIS _____ DAY OF _____ A.D., 20____.

CHAIRMAN

SECRETARY

DECLARATION VACATING PREVIOUS PLATTING

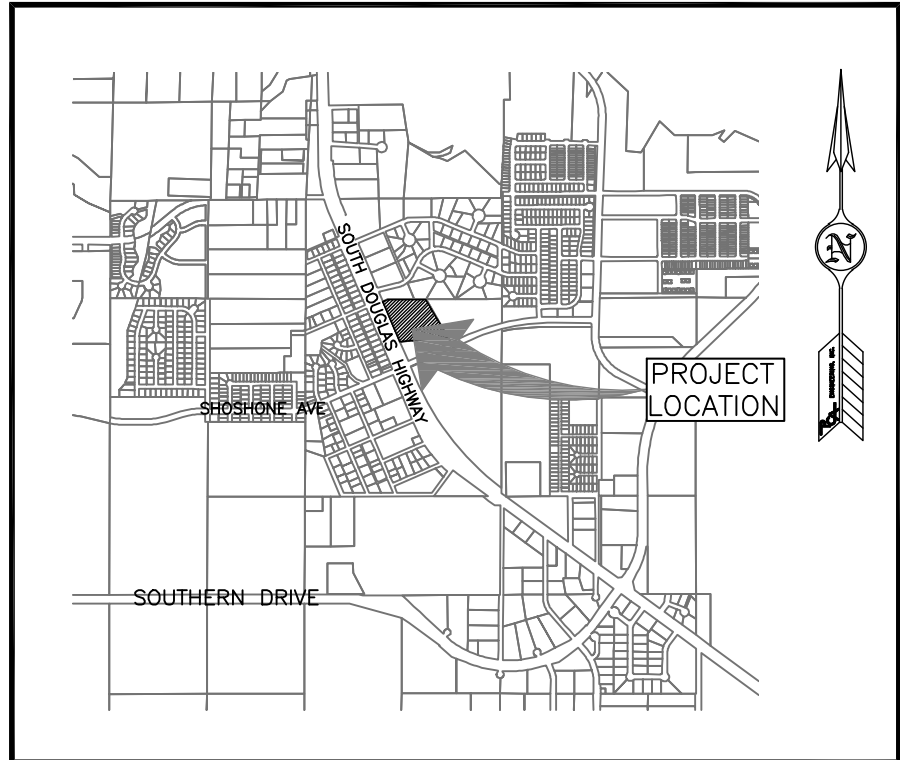
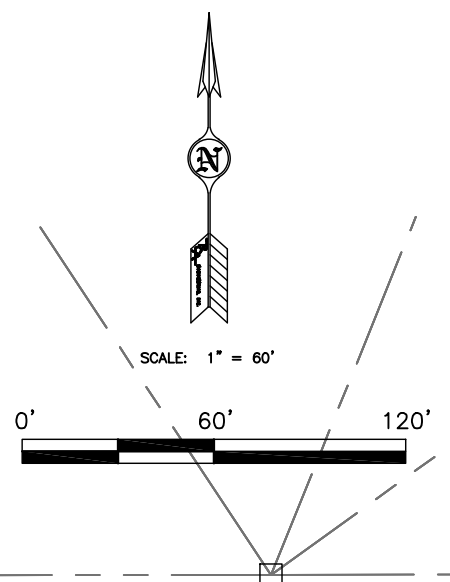
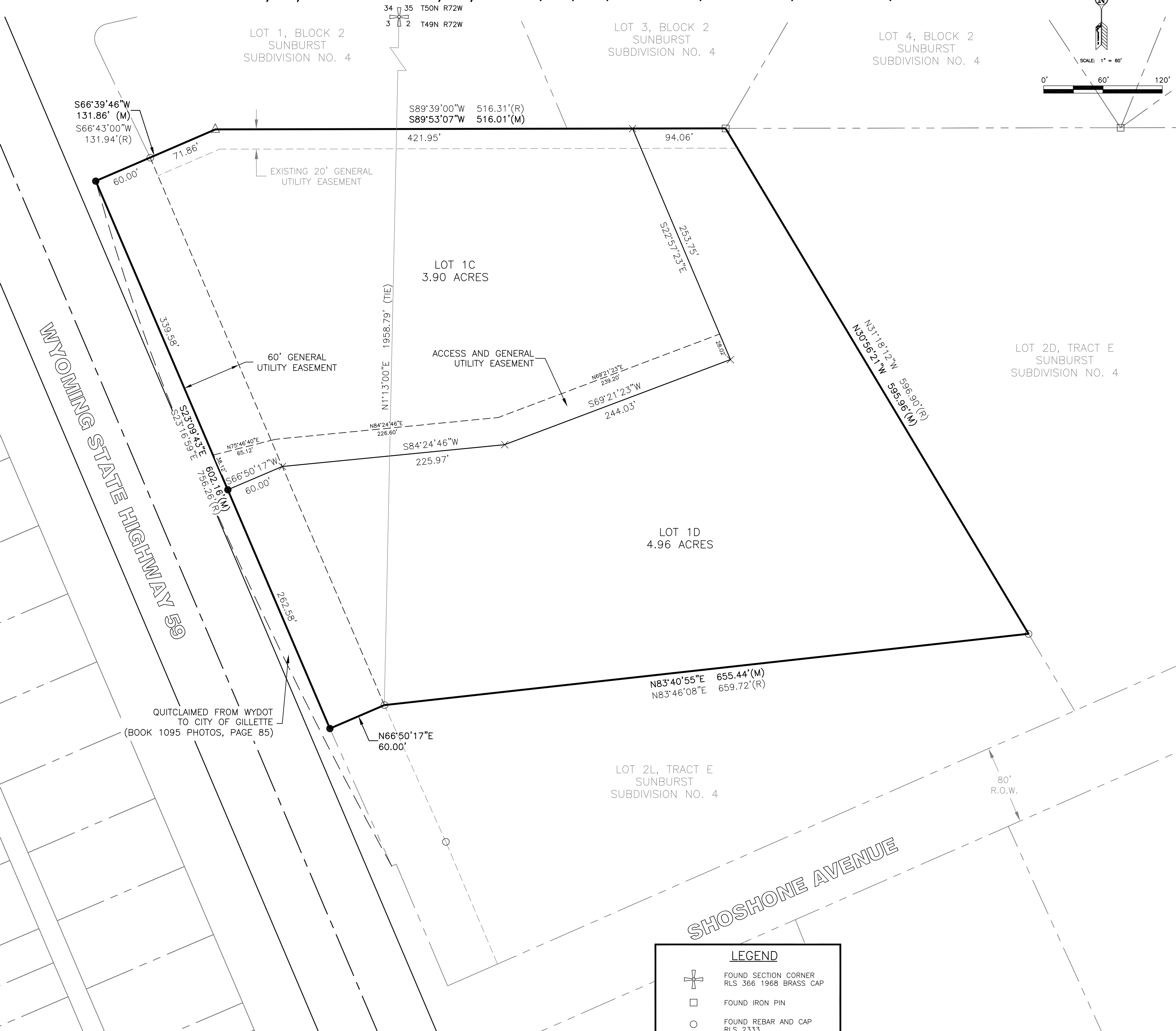
THIS PLAT IS THE RESUBDIVISION OF LOTS 1A & 1B OF TRACT E OF SUNBURST SUBDIVISION NO. 4, AS RECORDED IN BOOK 10 OF PLATS, PAGE 161 AND THE RESUBDIVISION OF VACATED 60' RIGHT OF WAY, OF THE RESUBDIVISION OF TRACT E OF SUNBURST SUBDIVISION NO. 4, AS RECORDED IN BOOK 6 OF PLATS, PAGE 120, OF THE RECORDS OF THE CAMPBELL COUNTY CLERK. ALL EARLIER PLATS OR PORTIONS THEREOF, ENCOMPASSED BY THE BOUNDARIES OF THIS PLAT ARE HEREBY VACATED.

CERTIFICATE FOR RECORDING BY THE COUNTY CLERK AND RECORDER

THIS PLAT WAS FILED FOR RECORD IN THE OFFICE OF THE CLERK AND RECORDER AT _____ O'CLOCK _____ M., THIS _____ DAY OF _____ 20____, AND IS DULY RECORDED IN BOOK NUMBER _____, PAGE NUMBER _____.

COUNTY CLERK

RESUBDIVISION OF LOTS 1A & 1B AND
VACATED 60' RIGHT OF WAY OF SUNBURST SUBDIVISION NO. 4
OF THE RESUBDIVISION OF LOT 1, OF THE RESUBDIVISION OF TRACT E, SUNBURST SUBDIVISION NO. 4
LOCATED IN A PORTION OF THE SE1/4NE1/4 SECTION 3 AND THE SW1/4NW1/4 SECTION 2, T49N, R72W, OF THE 6TH P.M., CITY OF GILLETTE, CAMPBELL COUNTY, WYOMING



VICINITY MAP

BENCHMARK

BASED ON CITY OF GILLETTE
VERTICAL CONTROL MONUMENT #22
ELEVATION= 4559.38

BASIS OF BEARING

THE CITY OF GILLETTE HORIZONTAL
CONTROL NETWORK.
***ALL MEASURED DISTANCES ARE
GRID, FOR CONVERSION TO
SURFACE, MULTIPLY BY 1.00026964.
***ALL AREAS ARE CALCULATED
AT SURFACE.

LEGEND

- FOUND SECTION CORNER
RLS 366 1968 BRASS CAP
- FOUND IRON PIN
- FOUND REBAR AND CAP
RLS 2333
- FOUND IRON PIN
W/ FLANGE
- FOUND REBAR AND CAP
PLS #6872
- SET 2" ϕ ALUMINUM CAP
(PLS #6872)
- SUBDIVISION BOUNDARY
- 110' WYDOT RIGHT OF WAY
BOOK 1095 PHOTOS, PAGE 85
- EXISTING EASEMENT
- PROPERTY/ROW LINES
- (R) RECORD DIMENSION-BK 6 PLATS, PG 120
- (M) MEASURED DIMENSION

NOTE

- ALL RECORD DIMENSIONS ARE REPORTED FROM BOOK 6 OF PLATS, PAGE 120, MEASURED DIMENSIONS CORRELATE WITH BOOK 10 OF PLATS, PAGE 161.
- THIS PLAT IS FOR OWNERSHIP PURPOSES ONLY. NO DEVELOPMENT IS ALLOWED WITHIN THE SUBDIVISION UNTIL SUCH TIME THE APPROPRIATE REVIEW PROCESS AND APPROVAL HAS BEEN CONDUCTED BY CITY OF GILLETTE.

Prepared for:

DMK DEVELOPMENT, LLC
3597 HENRY STREET, SUITE 102
MUSKEGON, MI 49441
(231) 780-5063



COPYRIGHT © ALL RIGHTS RESERVED BY PCA ENGINEERING, INC.

Drawn by: SM Design by: SM Reviewed by: DV
Revision Date Revision Description

PCA Project Number: 133629.00

Plot Date: May 07, 2014 - 9:47am

G:\PROJECTS\13362900 Tractor Supply Company\DesDwg
MainP.dwg
Layout: Plat 1

X-Ref: ...

RESUBDIVISION OF LOTS
1A & 1B AND VACATED
60' RIGHT OF WAY OF
SUNBURST SUBDIVISION
NO. 4

OF THE RESUBDIVISION OF LOT 1,
OF THE RESUBDIVISION OF TRACT E
OF SUNBURST SUBDIVISION NO. 4
LOCATED IN THE SE1/4NE1/4 SECTION 3 AND
THE SW1/4NW1/4 SECTION 2, T49N, R72W OF
THE 6TH P.M., CITY OF GILLETTE,
CAMPBELL COUNTY, WYOMING

FINAL PLAT

SHEET 1 OF 1