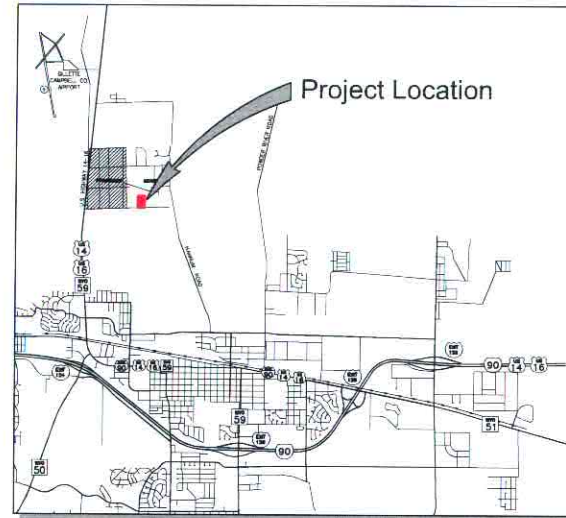


Means First Extension Water and Sewer District Campbell County

Plans for Proposed 2014 TANK REPAINT

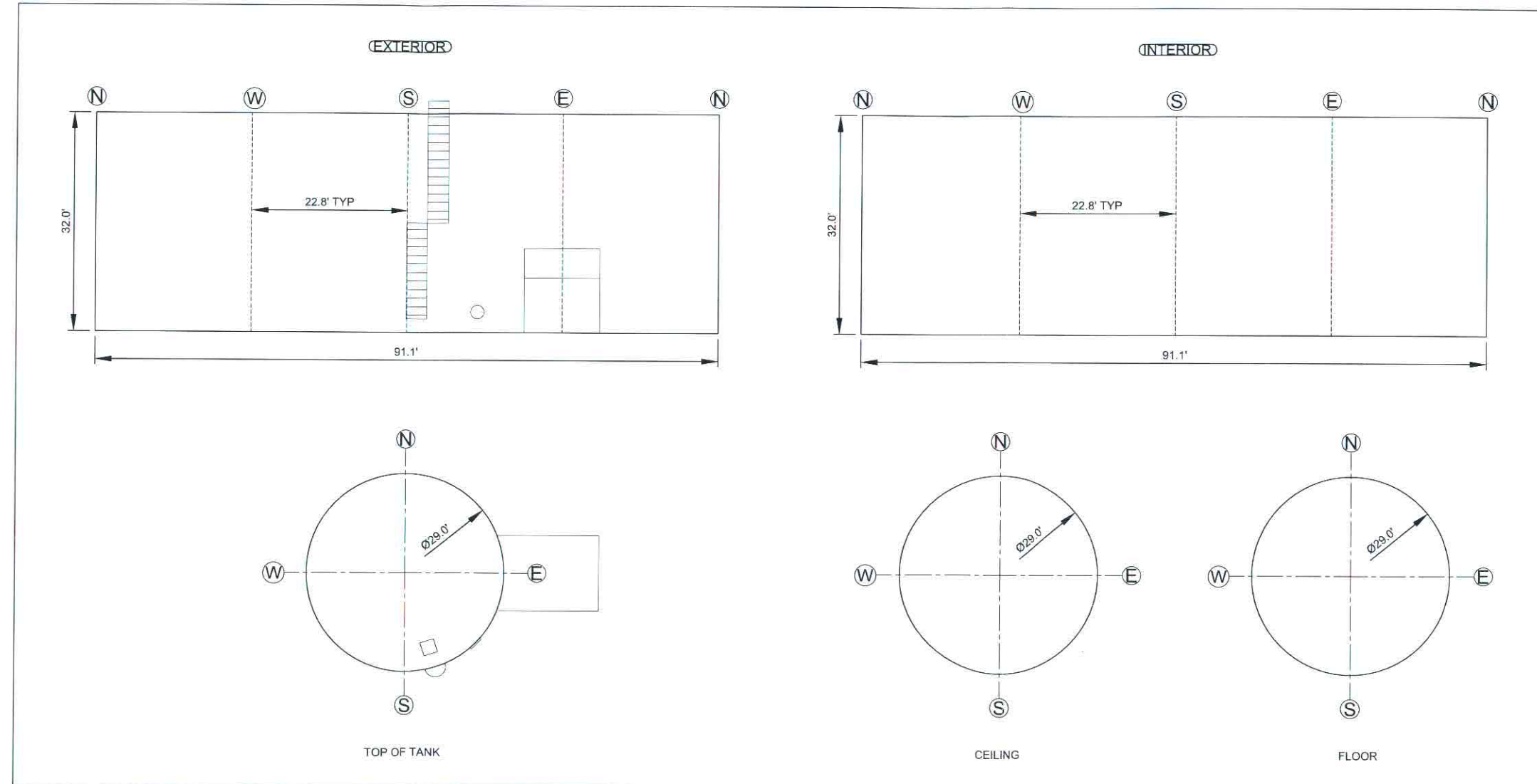


Vicinity Map



Project Tank

Location Map

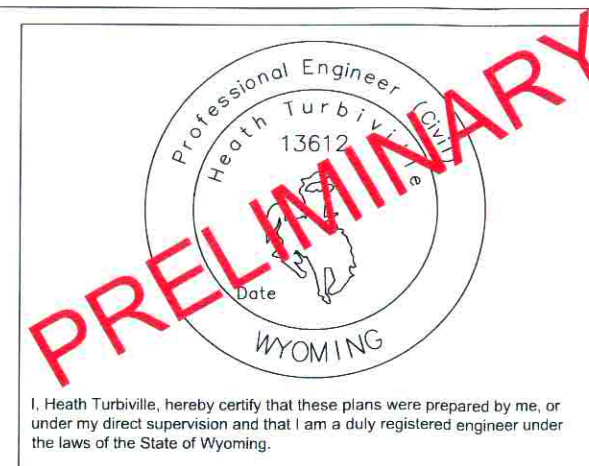


Means First Extension Water & Sewer District

400 SOUTH GILLETTE AVE, SUITE 106
PO BOX 1661
GILLETTE, WY

Board of Directors

Quentin Strand.....President
Pete Quinzel.....Vice President
Dawn Brengle.....Secretary/Treasurer
Nene McCabe.....Director
Gerald Eutsler.....Director



I, Heath Turbiville, hereby certify that these plans were prepared by me, or under my direct supervision and that I am a duly registered engineer under the laws of the State of Wyoming.

Plans By:

HDR

HDR ENGINEERING, Inc.

601 Metz Drive
P.O. Box 457
Gillette, WY 82717-0457
(307) 682.8936
(307) 682.5099 (fax)