

ANNEXATION CERTIFICATE

THIS ANNEXATION PLAT AS IT IS DESCRIBED AND AS IT APPEARS ON THIS PLAT IS A TRUE AND CORRECT MAP OF THE AREA TO BE ANNEXED AND IS MADE BY PETITION OF THE MAJORITY OF THE LANDOWNERS OWNING A MAJORITY OF THE LAND.

EXECUTED THIS _____ DAY OF _____ A.D., 20____, BY:

CITY OF GILLETTE MAYOR

(STATE OF WYOMING)
CAMPBELL COUNTY)

THE FOREGOING INSTRUMENT WAS ACKNOWLEDGED BEFORE ME THIS _____ DAY OF _____, A.D., 20____, BY THE CITY OF GILLETTE, MAYOR AS A FREE AND VOLUNTARY ACT AND DEED.

WITNESS MY HAND AND OFFICIAL SEAL.

NOTARY PUBLIC

MY COMMISSION EXPIRES:_____

CERTIFICATE OF APPROVAL BY THE CITY OF GILLETTE PLANNING COMMISSION

APPROVED BY THE CITY OF GILLETTE PLANNING COMMISSION THIS _____ DAY OF _____ A.D., 20____.

CHAIRMAN

SECRETARY

CERTIFICATE OF APPROVAL BY THE CITY COUNCIL OF THE CITY OF GILLETTE, WYOMING

APPROVED BY THE CITY COUNCIL OF THE CITY OF GILLETTE, WYOMING THIS _____ DAY OF _____ A.D., 20____.

MAYOR

CITY CLERK

CERTIFICATE OF REVIEW OF THE CITY ENGINEER

DATA ON THIS PLAT REVIEWED THIS _____ DAY OF _____ A.D., 20____ BY THE CITY ENGINEER OF GILLETTE WYOMING.

CITY ENGINEER

CERTIFICATE FOR RECORDING BY THE COUNTY CLERK AND RECORDER

THIS PLAT WAS FILED FOR RECORD IN THE OFFICE OF THE CLERK AND RECORDER AT _____ O'CLOCK _____ M., THIS _____ DAY OF _____, 20____, AND IS DULY RECORDED IN BOOK NUMBER _____ PAGE NUMBER _____.

COUNTY CLERK

SOUTHERN INDUSTRIAL ADDITION ANNEXATION
LOCATED IN PORTIONS OF THE SESW & SWSE SECTION 2, PORTIONS OF SECTION 11 AND PORTIONS OF THE SWNW & NSW SECTION 12, T49N, R72W OF THE 6TH P.M., CAMPBELL COUNTY, WYOMIING

LEGAL DESCRIPTION

A TRACT OF LAND SITUATED IN PORTIONS OF THE SE1/4SW1/4 AND SW1/4SE1/4 OF SECTION 2, PORTIONS OF SECTION 11 AND PORTIONS OF THE SW1/4NW1/4 AND NW1/4SW1/4 OF SECTION 12, ALL SITUATED IN T49N, R72W OF THE 6TH P.M. CAMPBELL COUNTY, WYOMING AND BEING MORE PARTICULARLY DESCRIBED AS FOLLOWS:

COMMENCING AT THE NORTHWEST CORNER OF THE SAID SECTION 11, BEING MONUMENTED BY A 3 ¼ INCH BRASS CAP WITH ILLEGIBLE STAMPING AT A FENCE CORNER AND BEING THE POINT OF BEGINNING;

THENCE ALONG THE WEST LINE OF SAID SECTION 11, S00°15'48"W, 1335.70 FEET TO THE NORTH 1/16TH CORNER OF SECTIONS 10 AND 11, BEING MONUMENTED BY A REBAR WITH A 1 ½ INCH ALUMINUM CAP;

THENCE ALONG THE NORTH 1/16TH LINE OF SAID SECTION 11, S89°51'07"E, 1344.28 FEET TO THE NORTHWEST 1/16TH CORNER OF SAID SECTION 11, BEING MONUMENTED BY A REBAR WITH A 1 ½ INCH ALUMINUM CAP;

THENCE ALONG THE WEST 1/16TH LINE OF SAID SECTION 11, S00°35'18"W, 667.90 FEET TO THE NORTHWEST CORNER OF LOT 10, BLOCK 4 OF SOUTHERN DRIVE INDUSTRIAL PARK AS RECORDED IN BOOK 7 OF PLATS, PAGE 24 IN THE CAMPBELL COUNTY CLERK'S OFFICE, BEING MONUMENTED BY A REBAR WITH AN ALUMINUM CAP STAMPED PLS 4769;

THENCE ALONG THE NORTH LINE OF SAID LOT 10, S89°29'04"E, 333.71 FEET TO THE NORTHEAST CORNER OF SAID LOT 10, BEING MONUMENTED BY A BARE REBAR;

THENCE ALONG THE EAST LINE OF SAID LOT 10, S00°33'13"W, 646.38 FEET TO THE SOUTHEAST CORNER OF SAID LOT 10, BEING MONUMENTED BY A REBAR WITH AN ALUMINUM CAP STAMPED PLS 4769;

THENCE ALONG THE SOUTH LINE OF SAID LOT 10, ALSO BEING THE NORTHERLY RIGHT OF WAY OF RAYMOND STREET, N89°29'04"W, 334.21 FEET TO THE SOUTHWEST CORNER OF SAID LOT 10, BEING MONUMENTED BY A REBAR WITH AN ALUMINUM CAP STAMPED PLS 4769;

THENCE ALONG THE AFOREMENTIONED WEST 1/16TH LINE, S00°22'56"W, 30.01 FEET TO THE CENTER WEST 1/16TH CORNER OF AFOREMENTIONED SECTION 11, BEING MONUMENTED BY A REBAR WITH AN ALUMINUM CAP STAMPED PLS 6872;

THENCE S89°25'14"W, 29.53 FEET TO THE NORTHEAST CORNER OF LOT 1 OF OILFIELD SUBDIVISION AS RECORDED IN BOOK 8 OF PLATS, PAGE 129 IN THE CAMPBELL COUNTY CLERK'S OFFICE, BEING MONUMENTED BY A REBAR WITH AN ALUMINUM CAP STAMPED RLS 2333;

THENCE ALONG THE NORTH LINE OF SAID LOT 1, N89°27'56"W, 787.04 FEET TO THE NORTHWEST CORNER OF SAID LOT 1, BEING MONUMENTED BY A REBAR WITH AN ALUMINUM CAP STAMPED PLS 6872, FROM WHICH THE WEST ¼ CORNER OF AFOREMENTIONED SECTION 11 LIES N89°27'56"W, 519.75 FEET, BEING MONUMENTED BY A 3 ¼ INCH BRASS CAP ON A 2 ½ INCH GALVANIZED PIPE STAMPED LS 538;

THENCE ALONG THE WEST LINE OF SAID LOT 1, S00°19'39"W, 278.25 FEET TO THE SOUTHWEST CORNER OF SAID LOT 1, BEING MONUMENTED BY A REBAR WITH AN ALUMINUM CAP STAMPED RLS 2333;

THENCE ALONG THE SOUTH LINE OF SAID LOT 1, S89°42'14"E, 119.39 FEET TO THE NORTHWEST CORNER OF LOT 2 OF AFOREMENTIONED OILFIELD SUBDIVISION, BEING MONUMENTED BY A REBAR WITH AN ALUMINUM CAP STAMPED PLS 6872;

THENCE ALONG THE WEST LINE OF SAID LOT 2, S00°25'00"W, 326.21 FEET TO THE SOUTHWEST CORNER OF SAID LOT 2, BEING MONUMENTED BY A REBAR WITH AN ALUMINUM CAP STAMPED PLS 6872, ALSO BEING ON THE NORTHERLY RIGHT OF WAY OF OILFIELD LANE;

THENCE ALONG THE SOUTH LINE OF SAID LOT 2 AND SAID NORTHERLY RIGHT OF WAY, S89°42'14"E, 667.68 FEET TO THE SOUTHEAST CORNER OF SAID LOT 2, BEING MONUMENTED BY A REBAR WITH AN ALUMINUM CAP STAMPED PLS 6872, ALSO BEING ON THE WESTERLY RIGHT OF WAY OF HITT BOULEVARD;

THENCE ALONG SAID WEST RIGHT OF WAY, S00°23'54"W, 720.09 FEET TO A POINT ON THE NORTH LINE OF ROBERTSON INDUSTRIAL PARK AS RECORDED IN BOOK 4 OF PLATS, PAGE 62 IN THE CAMPBELL COUNTY CLERK'S OFFICE, ALSO BEING ON THE SOUTH 1/16TH LINE OF AFOREMENTIONED SECTION 11;

THENCE ALONG THE NORTH LINE OF SAID ROBERTSON INDUSTRIAL PARK AND SAID SOUTH 1/16TH LINE, S89°54'05"W, 1303.50 FEET TO THE NORTHWEST CORNER OF SAID ROBERTSON SUBDIVISION, ALSO BEING THE SOUTH 1/16TH CORNER OF SECTIONS 10 AND 11, BEING MONUMENTED BY A REBAR WITH AN ALUMINUM CAP STAMPED RLS 2333;

THENCE ALONG THE WEST LINE OF SAID ROBERTSON INDUSTRIAL PARK, ALSO BEING THE WEST LINE OF SAID SECTION 11, S00°14'20"W, 1335.82 FEET TO THE SOUTHWEST CORNER OF SAID ROBERTSON INDUSTRIAL PARK, ALSO BEING THE SOUTHWEST CORNER OF AFOREMENTIONED SECTION 11, BEING MONUMENTED BY A 1968 BRASS CAP STAMPED RLS 366;

THENCE ALONG THE SOUTH LINE OF SAID ROBERTSON INDUSTRIAL PARK, ALSO BEING THE SOUTH LINE OF SAID SECTION 11, N89°55'33"E, 1279.78 FEET TO THE SOUTHEAST CORNER OF LOT 16 OF SAID ROBERTSON INDUSTRIAL PARK, ALSO BEING ON THE WESTERLY RIGHT OF WAY OF SWANSON ROAD, BEING MONUMENTED BY A REBAR WITH A PLASTIC CAP MARKED LSS84;

THENCE CONTINUING ALONG THE SOUTH LINE OF SAID ROBERTSON INDUSTRIAL PARK, ALSO BEING THE SOUTH LINE OF SAID SECTION 11, N89°55'33"E, 50.00 FEET TO THE SOUTHEAST CORNER OF SAID ROBERTSON INDUSTRIAL PARK, ALSO BEING THE WEST 1/16TH CORNER OF SECTIONS 11 AND 14, BEING MONUMENTED BY A 5/8 INCH REBAR WITH ALUMINUM CAP BURIED IN SWANSON ROAD;

THENCE ALONG THE EAST LINE OF SAID ROBERTSON INDUSTRIAL PARK, ALSO BEING THE WEST 1/16TH LINE OF SAID SECTION 11, N00°22'47"E, 1336.42 FEET TO THE NORTHEAST CORNER OF SAID ROBERTSON INDUSTRIAL PARK, ALSO BEING THE SOUTHWEST 1/16TH CORNER OF SAID SECTION 11 AND THE SOUTHWEST CORNER OF SHARON SUBDIVISION AS RECORDED IN BOOK 4 OF PLATS, PAGE 244 IN THE CAMPBELL COUNTY CLERK'S OFFICE, BEING MONUMENTED BY A REBAR WITH ALUMINUM CAP STAMPED PLS 6872 BURIED IN THE ROAD INTERSECTION;

THENCE ALONG THE SOUTH LINE OF SAID SHARON SUBDIVISION, ALSO BEING THE SOUTH 1/16TH LINE OF SAID SECTION 11, N89°56'23"E, 1332.16 FEET TO THE SOUTHEAST CORNER OF SAID SHARON SUBDIVISION, ALSO BEING THE CENTER SOUTH 1/16TH CORNER OF SAID SECTION 11, BEING MONUMENTED BY A REBAR WITH ALUMINUM CAP STAMPED PLS 6872;

THENCE CONTINUING ALONG THE SOUTH 1/16TH LINE OF SAID SECTION 11, ALSO BEING THE SOUTH LINE OF MOHAN SUBDIVISION AS RECORDED IN BOOK 2 OF PLATS, PAGE 44 IN THE CAMPBELL COUNTY CLERK'S OFFICE, S89°28'12"E, 2674.27 FEET TO THE SOUTHEAST CORNER OF SAID MOHAN SUBDIVISION, ALSO BEING THE SOUTH 1/16TH CORNER OF SECTIONS 11 AND 12, BEING MONUMENTED BY A 1976 BRASS CAP STAMPED RLS 577;

THENCE ALONG THE EAST LINE OF SAID MOHAN SUBDIVISION, ALSO BEING ON THE EASTERLY RIGHT OF WAY OF PATTY AVENUE AND THE EAST LINE OF SAID SECTION 11, N01°09'10"E, 600.90 FEET TO THE NORTHWEST CORNER OF CRESTVIEW ESTATES AS RECORDED IN BOOK 3 OF PLATS, PAGE 143 IN THE CAMPBELL COUNTY CLERK'S OFFICE, BEING MONUMENTED BY A REBAR WITH ALUMINUM CAP STAMPED LS 588;

THENCE ALONG THE NORTH LINE OF SAID CRESTVIEW ESTATES, N88°59'10"E, 1319.59 FEET TO A POINT ON THE WEST 1/16TH LINE OF AFOREMENTIONED SECTION 12, MONUMENTED BY A REBAR WITH ALUMINUM CAP STAMPED PLS 6872;

THENCE ALONG SAID WEST 1/16TH LINE, N00°44'13"E, 325.93 FEET TO A POINT ON THE NORTHEASTERLY RIGHT OF WAY OF WYOMING STATE HIGHWAY 59, FROM WHICH THE CENTER WEST 1/16TH CORNER OF SAID SECTION 12 LIES N00°44'13"E, 391.16 FEET, BEING MONUMENTED BY AN ALUMINUM CAP STAMPED PLS 588;

THENCE ALONG SAID NORTHEASTERLY RIGHT OF WAY, N3°32'11"W, 1019.91 FEET TO A CIRCULAR CURVE CONCAVE TO THE SOUTHWEST, BEING MONUMENTED BY A REBAR WITH AN ALUMINUM CAP STAMPED PLS 6872;

THENCE THROUGH SAID CURVE HAVING A DELTA ANGLE OF 20°28'21", A RADIUS LENGTH OF 1959.33 FEET, AN ARC LENGTH OF 700.09 FEET, A CHORD BEARING OF N43°35'05"W, AND A CHORD LENGTH OF 696.37 FEET TO A REBAR WITH AN ALUMINUM CAP STAMPED PLS 6872;

THENCE CONTINUING ALONG SAID NORTHEASTERLY RIGHT OF WAY, N53°48'56"W, 155.96 FEET TO A REBAR WITH ALUMINUM CAP STAMPED DAVIS SURVEYING;

THENCE CONTINUING ALONG SAID NORTHEASTERLY RIGHT OF WAY, N53°47'58"W, 193.83 FEET TO A WYDOT BRASS CAP IN CONCRETE STAMPED STA 211+10.4 PC CL;

THENCE CONTINUING ALONG SAID NORTHEASTERLY RIGHT OF WAY, N53°14'07"W, 3.85 FEET TO A WYDOT BRASS CAP IN CONCRETE STAMPED STA 211+05.9 PC;

THENCE CONTINUING ALONG SAID NORTHEASTERLY RIGHT OF WAY, N53°47'46"W, 1392.04 FEET TO A REBAR WITH A 1 ½ INCH ALUMINUM CAP;

THENCE CONTINUING ALONG SAID NORTHEASTERLY RIGHT OF WAY, N53°49'45"W, 249.59 FEET TO A BARE 5/8 INCH REBAR MONUMENTING THE SOUTHEAST CORNER OF LYSLE SUBDIVISION AS RECORDED IN BOOK 3 OF PLATS, PAGE 140 IN THE CAMPBELL COUNTY CLERK'S OFFICE;

THENCE ALONG THE EAST LINE OF SAID LYSLE SUBDIVISION, ALSO BEING THE EAST 1/16TH LINE OF AFOREMENTIONED SECTION 11, N00°09'32"E, 561.45 FEET TO NORTHEAST CORNER OF LYSLE SUBDIVISION, ALSO BEING THE EAST 1/16TH CORNER OF SECTIONS 2 AND 11, BEING MONUMENTED BY A REBAR WITH A 1 ½ INCH ALUMINUM CAP;

THENCE ALONG THE NORTH LINE OF SAID LYSLE SUBDIVISION, ALSO BEING THE NORTH LINE OF SAID SECTION 11, S89°49'49"W, 662.16 FEET TO THE SOUTHEAST CORNER OF HAYS SUBDIVISION AS RECORDED IN BOOK 6 OF PLATS, PAGE 145 IN THE CAMPBELL COUNTY CLERK'S OFFICE, BEING MONUMENTED BY A REBAR WITH ALUMINUM CAP STAMPED RLS 2333;

THENCE ALONG THE EAST LINE OF SAID HAYS SUBDIVISION, N00°05'04"E, 643.81 FEET TO A POINT ON THE EASTERLY RIGHT OF WAY OF GARNER LAKE ROAD AS RECORDED IN BOOK 9 OF PLATS, PAGE 96 IN THE CAMPBELL COUNTY CLERK'S OFFICE, ALSO BEING ON THE EASTERLY ANNEXATION LINE OF THE SOUTHSIDE ADDITION ANNEXATION AS RECORDED IN BOOK 8 OF PLATS, PAGE 311 IN THE CAMPBELL COUNTY CLERK'S OFFICE, BEING MONUMENTED BY A BARE 5/8" REBAR;

THENCE ALONG SAID EASTERLY RIGHT OF WAY AND SAID EASTERLY ANNEXATION LINE, N89°53'12"W, 14.67 FEET TO A NON TANGENT CIRCULAR CURVE CONCAVE TO THE WEST, BEING MONUMENTED BY A REBAR WITH ALUMINUM CAP STAMPED RLS 2333;

THENCE CONTINUING ALONG SAID EASTERLY RIGHT OF WAY AND SAID EASTERLY ANNEXATION LINE, THROUGH SAID CURVE HAVING A DELTA ANGLE OF 20°38'53", A RADIUS LENGTH OF 1074.71 FEET, AN ARC LENGTH OF 387.30 FEET, A CHORD BEARING OF S19°53'57"W, AND A CHORD LENGTH OF 385.21 FEET TO AN ANGLE POINT ON SAID EASTERLY RIGHT OF WAY, ALSO TO A NON TANGENT CIRCULAR CURVE CONCAVE TO THE WEST;

THENCE LEAVING SAID EASTERLY RIGHT OF WAY, CONTINUING ALONG SAID EASTERLY ANNEXATION LINE, THROUGH SAID CURVE HAVING A DELTA ANGLE OF 04°43'23", A RADIUS LENGTH OF 1071.63 FEET, AN ARC LENGTH OF 88.34 FEET, A CHORD BEARING OF S32°13'30"W, AND A CHORD LENGTH OF 88.31 FEET;

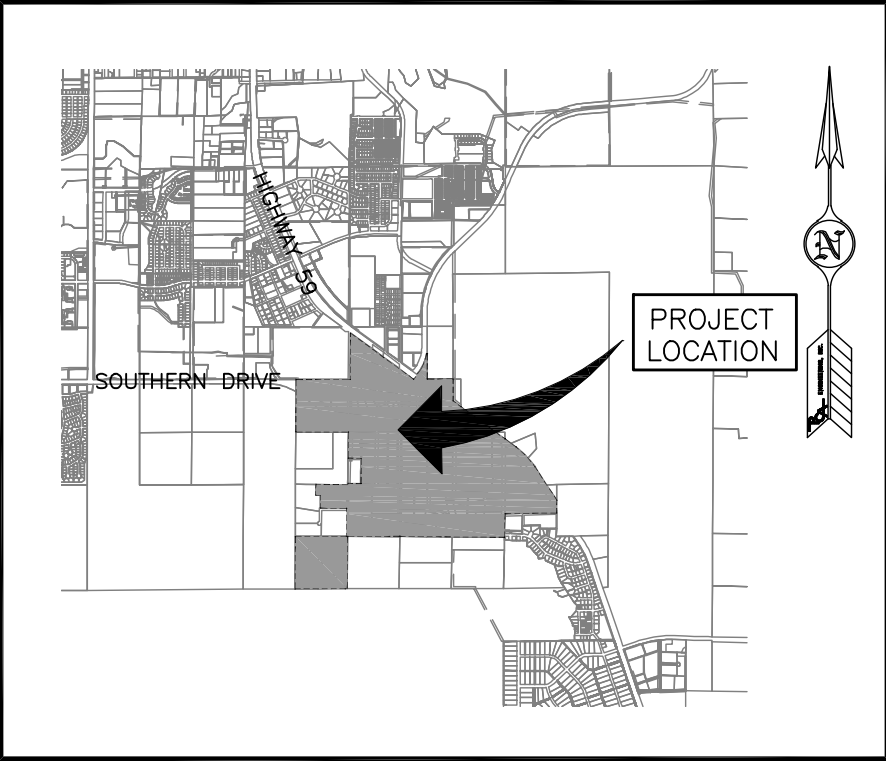
THENCE CONTINUING ALONG SAID EASTERLY ANNEXATION LINE, S36°22'11"W, 264.82 FEET TO A POINT ON THE SOUTHWESTERLY RIGHT OF WAY OF WYOMING STATE HIGHWAY 59, ALSO BEING THE SOUTHEASTERLY CORNER OF SAID ANNEXATION (SEE NOTE 1 ON SHEET 1 OF THIS ANNEXATION PLAT);

THENCE ALONG SAID SOUTHWESTERLY RIGHT OF WAY AND SOUTHERLY ANNEXATION LINE, N53°48'37"W, 1994.68 FEET TO THE NORTHWEST CORNER OF LOT 2A OF KC SUBDIVISION, ALSO BEING ON THE EASTERLY RIGHT OF WAY OF HITT BOULEVARD AS RECORDED IN BOOK 2 OF PLATS, PAGE 183 IN THE CAMPBELL COUNTY CLERK'S OFFICE, BEING MONUMENTED BY A REBAR WITH ALUMINUM CAP STAMPED PLS 6872;

THENCE LEAVING SAID SOUTHWESTERLY RIGHT OF WAY AND SAID SOUTHERLY ANNEXATION LINE, ALONG SAID EASTERLY RIGHT OF WAY OF HITT BOULEVARD, S00°23'32"W, 1178.50 FEET TO THE NORTHWEST CORNER OF LOT 1, BLOCK 2 OF AFOREMENTIONED SOUTHERN DRIVE INDUSTRIAL PARK, ALSO BEING ON THE NORTH LINE OF AFOREMENTIONED SECTION 11, BEING MONUMENTED BY A REBAR WITH ALUMINUM CAP STAMPED PLS4769;

THENCE ALONG SAID NORTH LINE, S89°39'02"W, 30.02 FEET TO THE WEST 1/16TH CORNER OF AFOREMENTIONED SECTIONS 2 AND 11, BEING MONUMENTED BY A 3 ¼ INCH BRASS CAP MOUNTED ON A 2 ½ INCH GALVANIZED PIPE;

THENCE CONTINUING ALONG SAID NORTH LINE, ALSO BEING THE NORTH LINE OF AFOREMENTIONED SOUTHERN DRIVE INDUSTRIAL PARK, S89°43'29"W, 1352.21 FEET TO THE POINT OF BEGINNING.



VICINITY MAP

Prepared for:

CITY OF GILLETTE

P.O. BOX 3003
GILLETTE, WY 82717-3003
307-686-5265



COPYRIGHT © ALL RIGHTS RESERVED BY PCA ENGINEERING, INC.

Drawn by: SS Design by: DV Reviewed by: DV
Revision Date Revision Description

PCA Project Number: 143690.00

Plot Date: Sep 25, 2014 - 3:34pm

G:\PROJECTS\14369000 COG - Southern Industrial Addition on A

MainP.dwg

Layout: Plat 1 (2)

X-Ref: ...

SOUTHERN INDUSTRIAL
ADDITION ANNEXATION
LOCATED IN PORTIONS OF
THE SESW & SWSE SECTION
2, PORTIONS OF SECTION 11
AND PORTIONS OF THE SWNW
& NSW SECTION 12, T49N,
R72W OF THE 6TH P.M.,
CAMPBELL COUNTY, WYOMIING

ANNEXATION PLAT

SHEET 2 OF 2

BENCHMARK

BASED ON CITY OF GILLETTE
VERTICAL CONTROL MONUMENT #20
ELEVATION= 4550.60

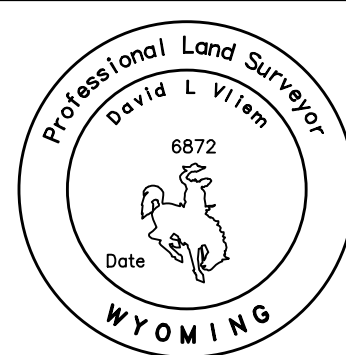
BASIS OF BEARING

THE CITY OF GILLETTE HORIZONTAL
CONTROL NETWORK.
***ALL MEASURED DISTANCES ARE
GRID, FOR CONVERSION TO
SURFACE, MULTIPLY BY 1.00026964.
***ALL AREAS ARE CALCULATED
AT SURFACE.

ANNEXATION SUMMARY

TOTAL AREA: 488.03 ACRES

RIGHT OF WAY: 75.5 ACRES



SURVEYOR'S CERTIFICATE

I, DAVID L. VLIEM, DO HEREBY CERTIFY THAT I AM A REGISTERED LAND SURVEYOR, LICENSED UNDER THE LAWS OF THE STATE OF WYOMING, THAT THIS ANNEXATION PLAT IS A TRUE, CORRECT AND COMPLETE PLAT OF THE SOUTHERN INDUSTRIAL ADDITION ANNEXATION LOCATED IN PORTIONS OF THE SESW & SWSE SECTION 2, PORTIONS OF SECTION 11 AND PORTIONS OF THE SWNW & NSW SECTION 12, T49N, R72W OF THE 6TH P.M., CAMPBELL COUNTY, WYOMING, AS LAID OUT, PLATTED, DEDICATED AND SHOWN HEREON, THAT SUCH PLAT WAS MADE FROM AN ACCURATE SURVEY OF SAID PROPERTY BY ME AND UNDER MY SUPERVISION.