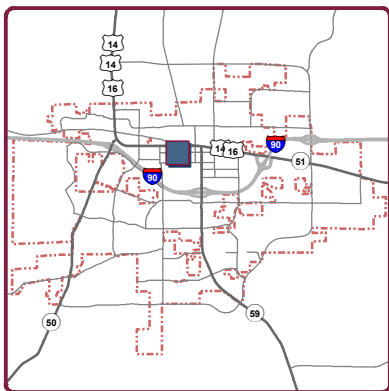
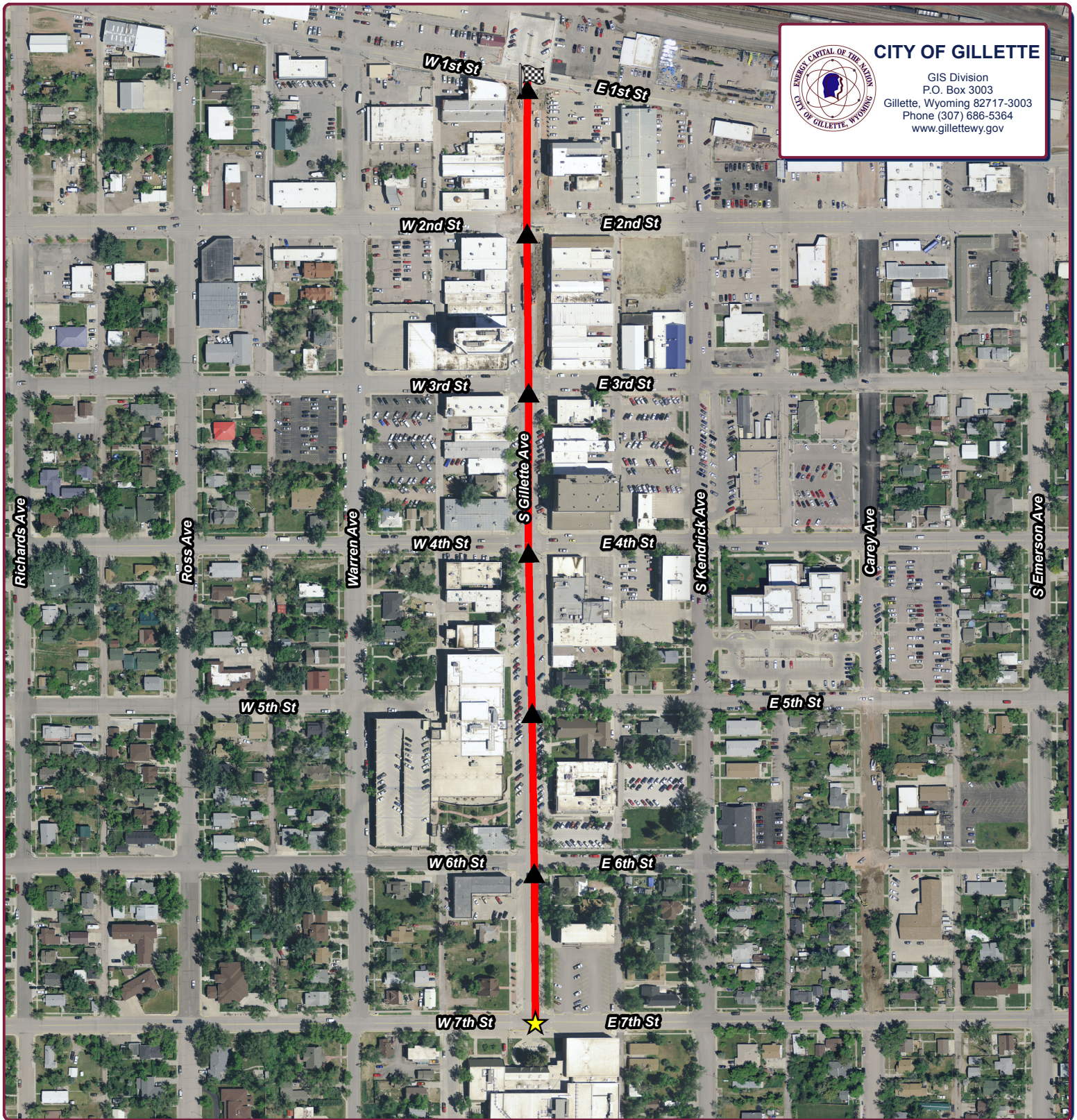




CITY OF GILLETTE

GIS Division
P.O. Box 3003
Gillette, Wyoming 82717-3003
Phone (307) 686-5364
www.gillettewy.gov



Legend

- ★ Parade Begins
- 🚩 Parade Ends
- ➡ Parade Route

THE INFORMATION ON THIS DRAWING WAS OBTAINED FROM RECORD AND DESIGN DRAWINGS. THE CITY OF GILLETTE MAKES NO GUARANTEE REGARDING THE ACCURACY OF THIS DRAWING OR THE INFORMATION CONTAINED THEREIN.



Y:\GIS Work\Administration\
Administrative Services\
City Clerk\Parades

0 150 300
Feet

Parade of Lights Route

November 20, 2014

Productivity Service With P.R.I.D.E. Enthusiasm
Responsibility Integrity Dedication