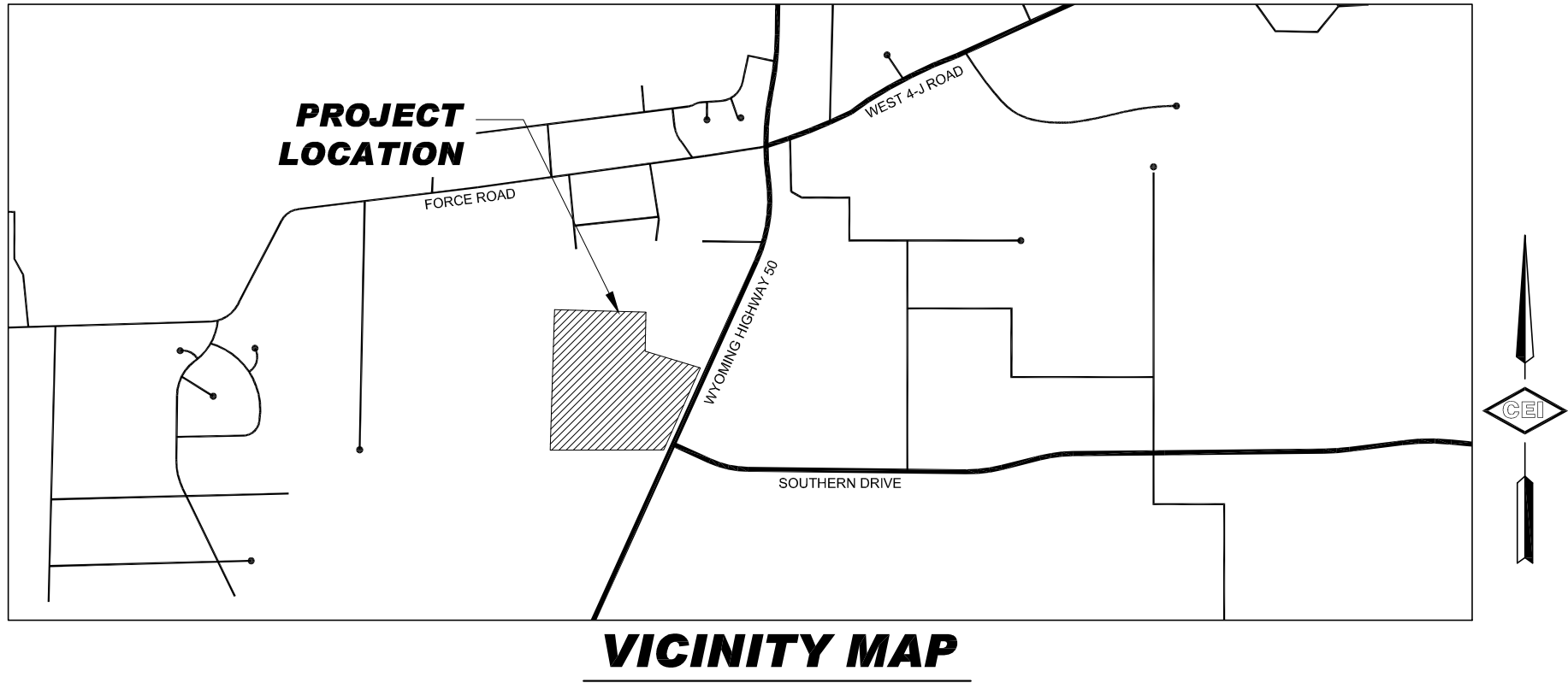
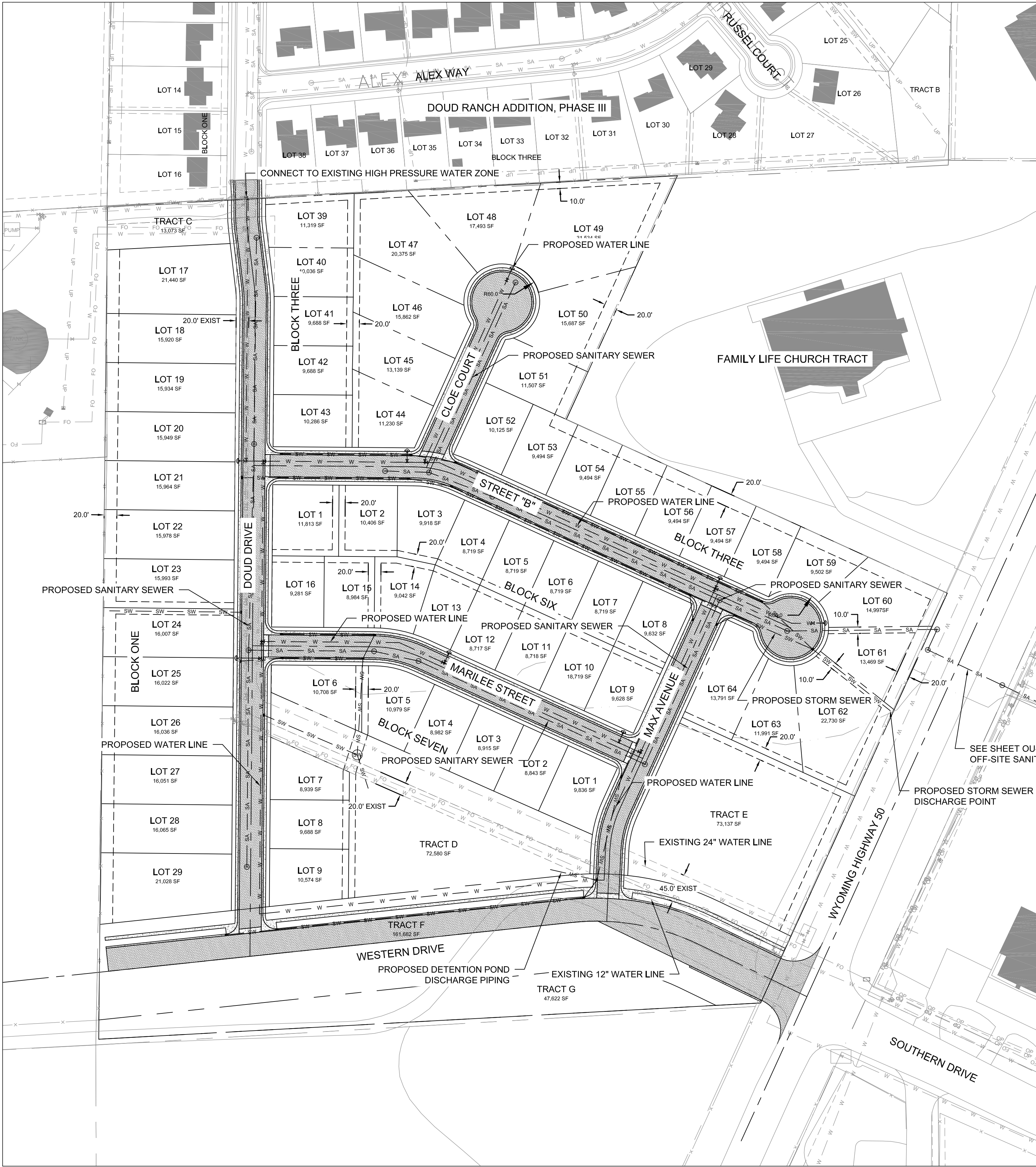


PRELIMINARY UTILITY PLAN FOR
DOUD RANCH ADDITION, PHASE IV
A PORTION OF THE SE1/4 SE1/4 SEC. 6, T. 49 N., R. 72 W.
OF THE 6TH PRINCIPAL MERIDIAN, CAMPBELL COUNTY, WYOMING



SYMBOL LEGEND					
EXISTING	PROPOSED	DESCRIPTION	EXISTING	PROPOSED	DESCRIPTION
SA	SA	SANITARY SEWER	—○—	—○—	CHAINLINK FENCE LINE
SS	SS	SANITARY SEWER SERVICE	—○—○—	—○—○—	PIPE RAIL FENCE LINE
W	W	WATER LINE	—ELEV—	—ELEV—	MAJOR CONTOUR LINE
WS	WS	WATER SERVICE	—ELEV—	—ELEV—	MINOR CONTOUR LINE
SW	SW	STORM SEWER	[Pattern]	[Pattern]	CONCRETE
OP	OP	OVERHEAD POWER	[Pattern]	[Pattern]	ASPHALT
UP	UP	UNDERGROUND POWER	[Pattern]	[Pattern]	GRAVEL SURFACE
GAS	GAS	GAS LINE	[Pattern]	[Pattern]	SIDEWALK
T	T	PHONE LINE	[Symbol]	[Symbol]	FIRE HYDRANT
FO	FO	FIBER OPTIC	[Symbol]	[Symbol]	GATE VALVE
CA	CA	CABLE TV	[Symbol]	[Symbol]	SANITARY SEWER CLEAN OUT
---	---	PROPERTY LINE	[Symbol]	[Symbol]	STREET LIGHT
---	---	EASEMENT LINE	[Symbol]	[Symbol]	FIBER OPTIC BOX
---	---	SET BACK LINE			

WATER SYSTEM NOTES

- ALL NEW WATER LINES ARE 8" DIAMETER UNLESS NOTED OTHERWISE.
- THE NEW WATER SYSTEM WILL BE CONNECTED TO THE HIGH PRESSURE ZONE ESTABLISHED FOR THE DOUD RANCH AREA.
- THE EXISTING 24" DIAMETER WATER LINE THAT RUNS THROUGH THE SITE WILL NOT BE CONNECTED TO.
- THE EXISTING 12" DIAMETER LINE THAT RUNS THROUGH THE SITE IS ON THE NORMAL PRESSURE ZONE AND WILL NOT BE CONNECTED TO.
- FIRE HYDRANTS, VALVES, HORIZONTAL BENDS, AND WATER SERVICES TO BE SHOWN ON FINAL CONSTRUCTION DRAWINGS.

SANITARY SEWER SYSTEM NOTES

- ALL NEW SANITARY SEWER LINES WITHIN THE SUBDIVISION BOUNDARY ARE 8" DIAMETER UNLESS NOTED OTHERWISE.
- MANHOLES AND SANITARY SEWER SERVICES TO BE SHOWN ON FINAL CONSTRUCTION DRAWINGS.
- SEE SHEET OU-2 FOR OFF-SITE SANITARY SEWER SYSTEM.

STORM SEWER SYSTEM NOTES

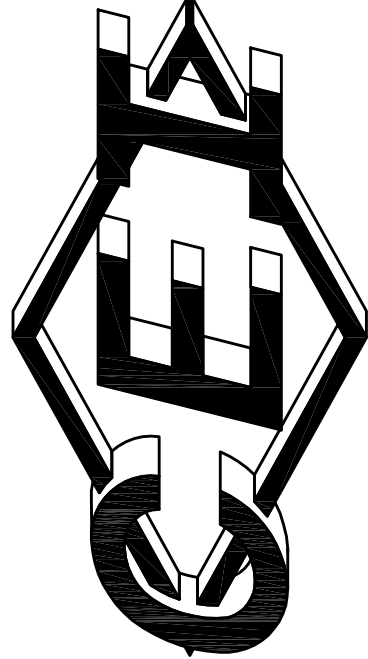
- ALL NEW STORM SEWER LINES WITHIN THE SUBDIVISION BOUNDARY ARE ANTICIPATED TO BE BETWEEN 15" AND 24" DIAMETER.
- STORM SEWER PIPING WILL BE CONSTRUCTED BETWEEN LOTS 23 AND 24, BLOCK ONE TO CONVEY OFF-SITE FLOWS THROUGH THE SUBDIVISION SYSTEM.
- TRACT D WILL BE USED FOR THE CONSTRUCTION OF A STORM WATER DETENTION POND THAT IS ANTICIPATED TO HAVE SUFFICIENT CAPACITY SO THAT THE DISCHARGE FROM IT COMBINED WITH DISCHARGE FROM OTHER PARTS OF THE SYSTEM THAT DO NOT GO THROUGH IT IS LIMITED TO THE HISTORICAL DISCHARGE FROM THE ENTIRE SITE.

PREPARED FOR:

DOUD BTS
25528 GENESEE TRAIL ROAD
GOLDEN, CO 80401-9366

CONSOLIDATED ENGINEERS, INC.

316 SO GILLETTE AVE. PO BOX 1035 GILLETTE WYOMING 82717
PH. (307) 682-0768 FAX. (307) 686-0089



REV. DATE DESCRIPTION

DATE: JANUARY 7, 2015

PROJECT NO: 5523-B

FILE NAME: PRELIMINARY UTILITY PLAN

DRAWN: SS DESIGNED: DGS CHKD: DGS

SHEET NO.
OU-1

**DOUD RANCH IV
PRELIMINARY UTILITY PLAN**