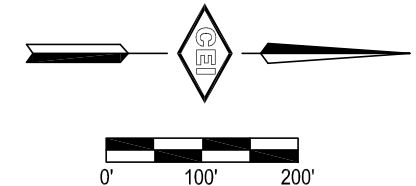
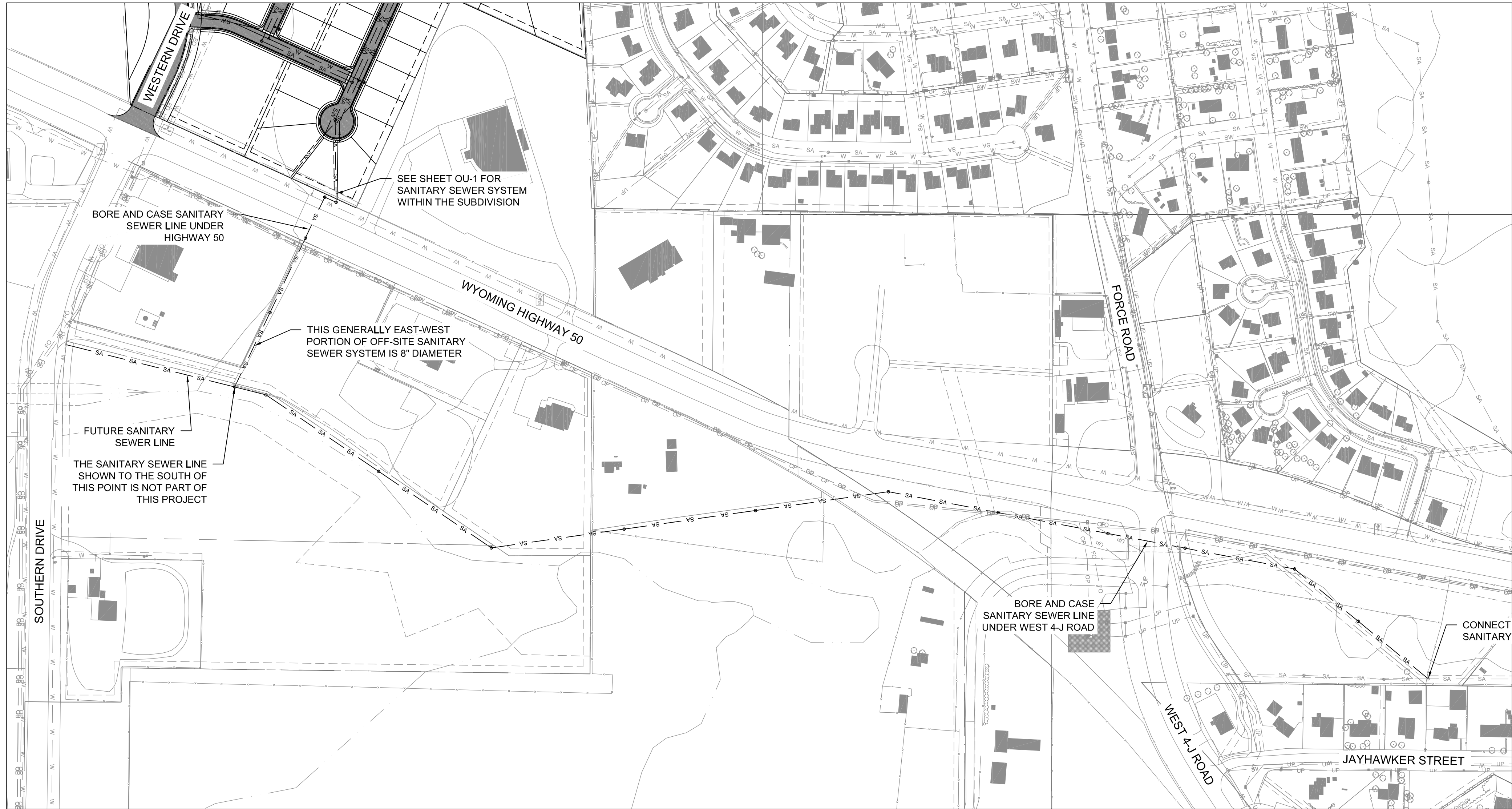


PRELIMINARY OFF-SITE UTILITY PLAN FOR
DOUD RANCH ADDITION, PHASE IV
A PORTION OF THE SE1/4 SE1/4 SEC. 6, T. 49 N., R. 72 W.
OF THE 6TH PRINCIPAL MERIDIAN, CAMPBELL COUNTY, WYOMING



SYMBOL LEGEND					
EXISTING	PROPOSED	DESCRIPTION	EXISTING	PROPOSED	DESCRIPTION
SA	SA	SANITARY SEWER	—○—	—○—	CHAINLINK FENCE LINE
SS	SS	SANITARY SEWER SERVICE	—○—○—	—○—○—	PIPE RAIL FENCE LINE
W	W	WATER LINE	—ELEV—	—ELEV—	MAJOR CONTOUR LINE
WS	WS	WATER SERVICE	—ELEV—	—ELEV—	MINOR CONTOUR LINE
SW	SW	STORM SEWER	[Pattern]	[Pattern]	CONCRETE
OP	OP	OVERHEAD POWER	[Pattern]	[Pattern]	ASPHALT
UP	UP	UNDERGROUND POWER	[Pattern]	[Pattern]	GRAVEL SURFACE
GAS	GAS	GAS LINE	[Pattern]	[Pattern]	SIDEWALK
T	T	PHONE LINE	⊗	⊗	FIRE HYDRANT
FO	FO	FIBER OPTIC	⊗	⊗	GATE VALVE
CA	CA	CABLE TV	⊗	⊗	SANITARY SEWER CLEAN OUT
---	---	PROPERTY LINE	☆	☆	STREET LIGHT
---	---	EASEMENT LINE	⊠	⊠	FIBER OPTIC BOX
---	---	SET BACK LINE			

OFF-SITE SANITARY SEWER SYSTEM NOTES

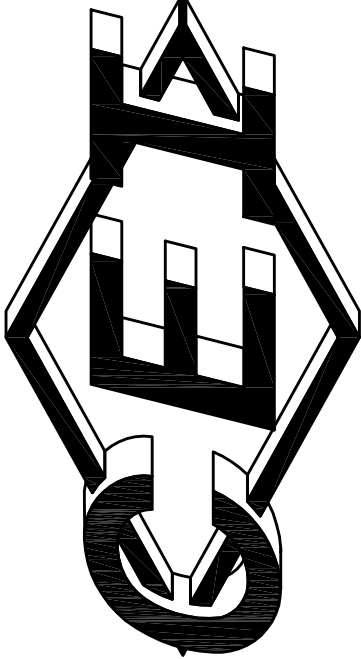
- ALL NEW OFF-SITE SANITARY SEWER LINES ARE 10" DIAMETER UNLESS NOTED OTHERWISE.
- MANHOLES AND SANITARY SEWER SERVICES TO BE SHOWN ON FINAL CONSTRUCTION DRAWINGS.
- SEE SHEET OU-1 FOR THE SANITARY SEWER SYSTEM WITHIN THE PROPOSED SUBDIVISION.

PREPARED FOR:

DOUD BTS
25528 GENESEE TRAIL ROAD
GOLDEN, CO 80401-9366

CONSOLIDATED ENGINEERS, INC.

316 SO GILLETTE AVE. PO BOX 1035 GILLETTE WYOMING 82717
PH. (307) 682-0768 FAX (307) 686-0089



REV.	DATE	DESCRIPTION
-	-	-
-	-	-
-	-	-
DATE: JANUARY 7, 2015		
PROJECT NO: 5523-B		
FILE NAME: PRELIM OFF-SITE UTILITY PLAN		
DRAWN: SS DESIGNED: DGS CHKD: DGS		

SHEET NO.

OU-2

**DOUD RANCH IV
PRELIMINARY OFF-SITE UTILITY PLAN**