

CERTIFICATE OF DEDICATION

KNOW ALL MEN BY THESE PRESENTS THAT THE UNDERSIGNED CITY OF GILLETTE, BEING THE OWNER, PROPRIETOR OR PARTIES OF INTEREST IN THE LAND SHOWN ON THIS PLAT, DO HEREBY CERTIFY THAT THE FOREGOING PLAT DESIGNATED AS GILLETTE TECH CENTER PHASE III, A RESUBDIVISION OF LOT 3, BLOCK 5 GILLETTE TECH CENTER PHASE I AND TRACT D, GILLETTE TECH CENTER, PHASE II, LOCATED IN SECTION 3, TOWNSHIP 49 NORTH, RANGE 72 WEST, OF THE 6TH PRINCIPAL MERIDIAN, GILLETTE, CAMPBELL COUNTY, WYOMING, AND IS MORE PARTICULARLY DESCRIBED AS FOLLOWS: LOT 3, BLOCK 5 GILLETTE TECH CENTER PHASE I AND TRACT D, GILLETTE TECH CENTER, PHASE II AND CONTAINS AN AREA OF 16.83 ACRES, MORE OR LESS, AND THAT THIS SUBDIVISION, AS IT IS DESCRIBED AND AS IT APPEARS ON THIS PLAT, IS MADE WITH THE FREE CONSENT AND IN ACCORDANCE WITH THE DESIRES OF THE UNDERSIGNED OWNER AND PROPRIETOR; AND THAT THIS IS A CORRECT PLAT OF THE AREA AS IT IS DIVIDED INTO LOTS, BLOCKS, STREETS AND EASEMENTS.

THAT THE UNDERSIGNED OWNER OF THE LAND SHOWN AND DESCRIBED ON THIS PLAT DOES HEREBY DEDICATE TO THE CITY OF GILLETTE AND ITS LICENSEES FOR PERPETUAL PUBLIC USE, ALL STREETS, ALLEYS, EASEMENTS AND OTHER PUBLIC LANDS WITHIN THE BOUNDARY LINES OF THE PLAT, AS INDICATED, AND NOT ALREADY OTHERWISE DEDICATED FOR PUBLIC USE.

UTILITY EASEMENTS, AS DESIGNATED ON THIS PLAT, ARE HEREBY DEDICATED TO THE CITY OF GILLETTE AND ITS LICENSEES FOR PERPETUAL PUBLIC USE, FOR THE PURPOSE OF INSTALLING, REPAIRING, REINSTALLING, REPLACING AND MAINTAINING SEWERS, WATER LINES, GAS LINES, ELECTRIC LINES, TELEPHONE LINES, CABLE TV LINES AND OTHER FORMS AND TYPES OF PUBLIC UTILITIES NOW OR HEREAFTER GENERALLY UTILIZED BY THE PUBLIC.

DRAINAGE EASEMENTS, AS DESIGNATED ON THIS PLAT, ARE HEREBY DEDICATED TO THE CITY OF GILLETTE AND ITS LICENSEES FOR PUBLIC USE, TO ACCOMMODATE THE FLOW OR STORAGE OF STORM WATERS AND SHALL BE KEPT FREE OF ALL STRUCTURES OR OTHER IMPEDIMENTS.

ALL RIGHTS UNDER AND BY VIRTUE OF THE HOMESTEAD EXEMPTION LAWS OF THE STATE OF WYOMING ARE HEREBY WAIVED AND RELEASED.

EXECUTED THIS _____ DAY OF _____ A.D., 20____, BY:

LOUISE CARTER-KING, MAYOR CITY OF GILLETTE

STATE OF WYOMING)

CAMPBELL COUNTY) SS.

THE FOREGOING INSTRUMENT WAS ACKNOWLEDGED BEFORE ME THIS

____ DAY OF _____ A.D., 20____, BY LOUISE CARTER-KING, MAYOR CITY OF GILLETTE, AS A FREE AND VOLUNTARY ACT AND DEED.

WITNESS MY HAND AND OFFICIAL SEAL.

NOTARY PUBLIC

MY COMMISSION EXPIRES: _____

CERTIFICATE OF REVIEW OF THE CITY ENGINEER

DATA ON THIS PLAT REVIEWED THIS _____ DAY OF _____ A.D., 20____ BY THE CITY ENGINEER OF GILLETTE WYOMING.

CITY ENGINEER

CERTIFICATE OF APPROVAL BY THE CITY OF GILLETTE PLANNING COMMISSION

APPROVED BY THE CITY OF GILLETTE PLANNING COMMISSION THIS _____ DAY OF _____ A.D., 20____.

CHAIRMAN

SECRETARY

CERTIFICATE OF APPROVAL BY THE CITY COUNCIL OF THE CITY OF GILLETTE, WYOMING

APPROVED BY THE CITY COUNCIL OF THE CITY OF GILLETTE, WYOMING THIS _____ DAY OF _____ A.D., 20____.

MAYOR

CITY CLERK

DECLARATION VACATING PREVIOUS PLATTING

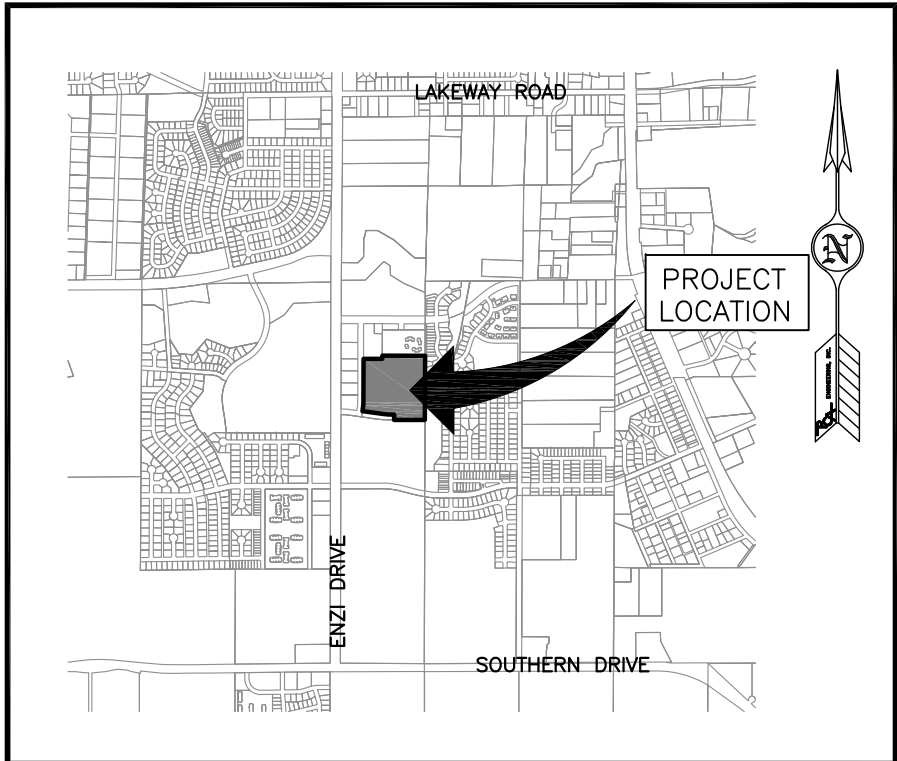
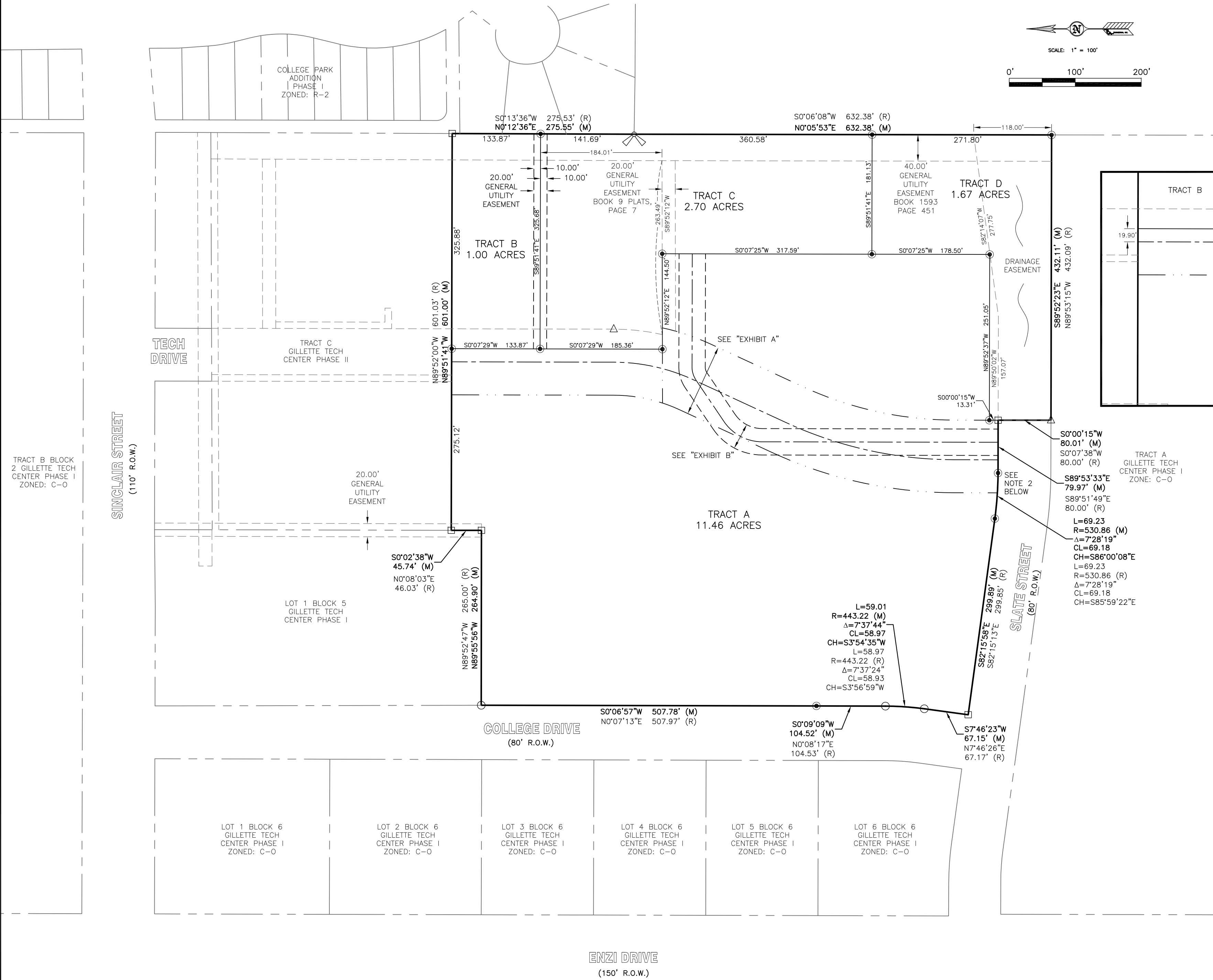
THIS PLAT IS THE RESUBDIVISION OF LOT 3, BLOCK 5 GILLETTE TECH CENTER, PHASE I, LOCATED IN SECTION 3, TOWNSHIP 49 NORTH, RANGE 72 WEST, OF THE 6TH PRINCIPAL MERIDIAN, GILLETTE, CAMPBELL COUNTY, WYOMING, AS RECORDED IN BOOK 7 OF PLATS, PAGE 156 AND THE RESUBDIVISION OF TRACT D, GILLETTE TECH CENTER, PHASE II, LOCATED IN SECTION 3, TOWNSHIP 49 NORTH, RANGE 72 WEST, OF THE 6TH PRINCIPAL MERIDIAN, GILLETTE, CAMPBELL COUNTY, WYOMING, AS RECORDED IN BOOK 9 OF PLATS, PAGE 382, OF THE RECORDS OF THE CAMPBELL COUNTY CLERK. ALL EARLIER PLATS OR PORTIONS THEREOF, ENCOMPASSED BY THE BOUNDARIES OF THIS PLAT ARE HEREBY VACATED.

CERTIFICATE FOR RECORDING BY THE COUNTY CLERK AND RECORDER

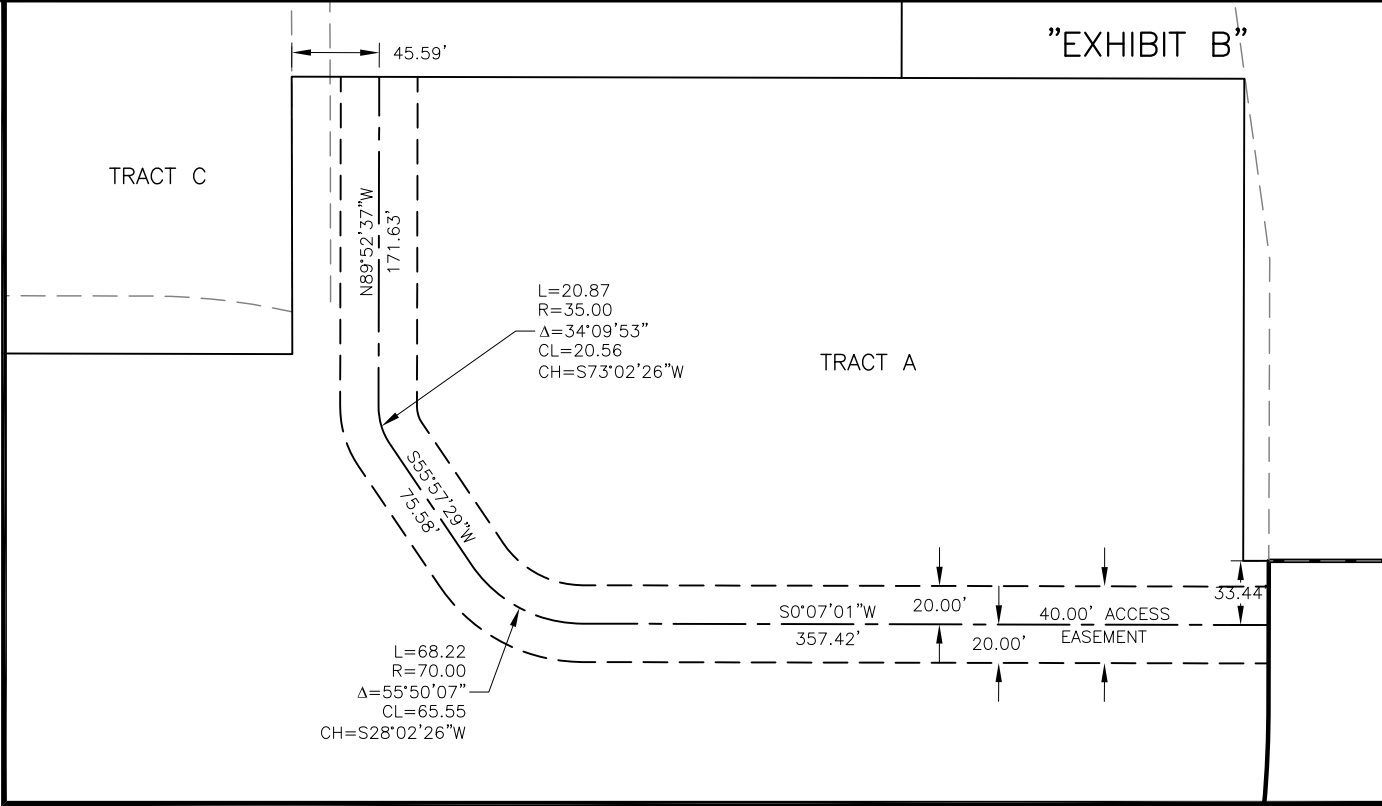
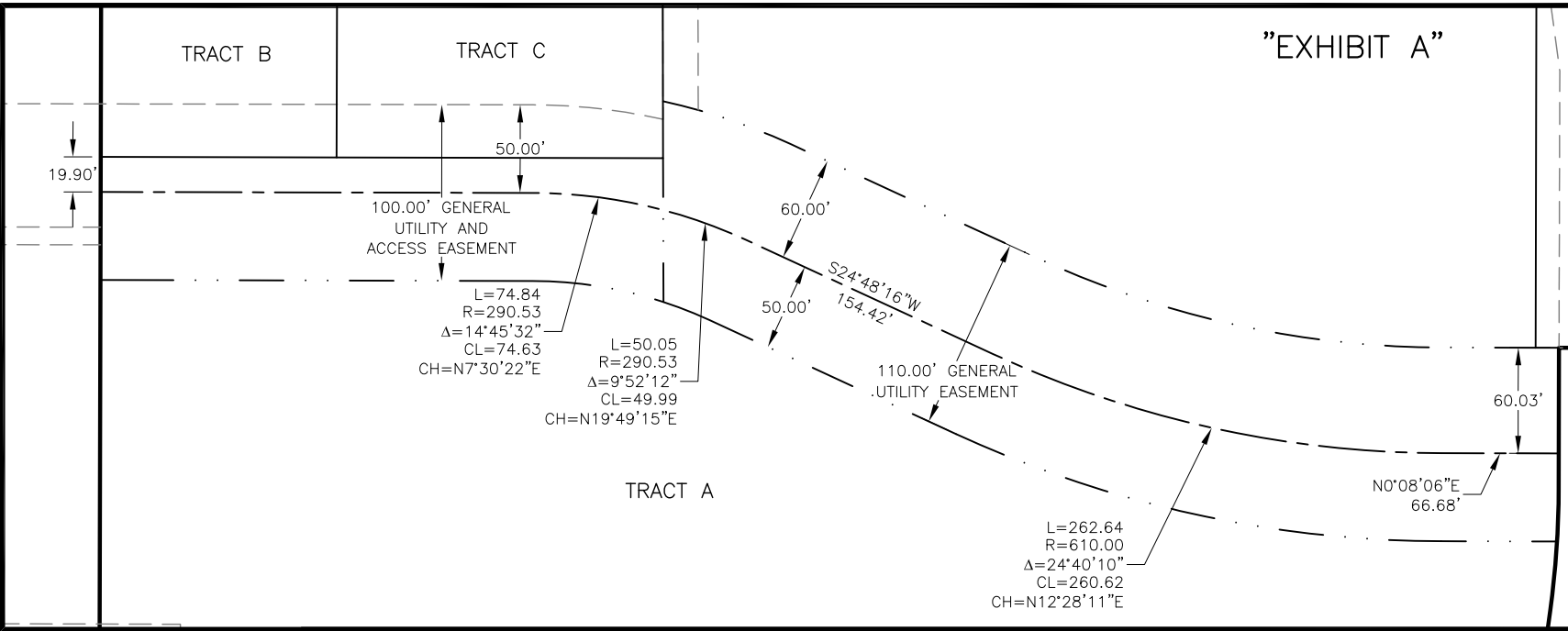
THIS PLAT WAS FILED FOR RECORD IN THE OFFICE OF THE CLERK AND RECORDER AT _____ O'CLOCK ____ M., THIS _____ DAY OF _____ 20____ AND IS DULY RECORDED IN BOOK NUMBER _____, PAGE NUMBER _____.

COUNTY CLERK

GILLETTE TECH CENTER PHASE III
A RESUBDIVISION OF LOT 3, BLOCK 5 GILLETTE TECH CENTER PHASE I AND
TRACT D GILLETTE TECH CENTER PHASE II
LOCATED IN SECTION 3, T49N, R72W, OF THE 6TH P.M., GILLETTE, CAMPBELL COUNTY, WYOMING



VICINITY MAP



Prepared for:
CITY OF GILLETTE

P.O. BOX 3003
GILLETTE, WY 82717
307-686-5281



COPYRIGHT © ALL RIGHTS RESERVED BY PCA ENGINEERING, INC.

Drawn by: SS	Design by: SS	Reviewed by: DV
Revision Date	Revision Description	

PCA Project Numbers: 143703.00
Plot Date: Apr 27, 2015 - 9:18am

G:\PROJECTS\14370300 Resub Tract D Lot 3 Blk 5 Gillette MainP.dwg
Layout: Plat 1

X-Ref: ...

GILLETTE TECH
CENTER PHASE III
A RESUBDIVISION OF LOT
3, BLOCK 5 GILLETTE
TECH CENTER PHASE I
AND TRACT D GILLETTE
TECH CENTER PHASE II
LOCATED IN SECTION 3, T49N,
R72W, OF THE 6TH P.M.,
GILLETTE CAMPBELL COUNTY,
WYOMING

FINAL PLAT

SHEET 1 OF 1

LEGEND

- FOUND PROPERTY CORNER
PLS 5655
- △ FOUND PROPERTY CORNER
PELS 2395
- FOUND PROPERTY CORNER
ALUMINUM CAP PLS 6872
- ⚡ FOUND SIXTEENTH CORNER
2" IRON PIPE
- SET 2" ALUMINUM CAP WITH
REBAR (PLS #6872)
- SUBDIVISION BOUNDARY
- LOT BOUNDARY
- - - EASEMENT
- · - EASEMENT
- (R) RECORD
- (M) MEASURED

BENCHMARK

BASED ON CITY OF GILLETTE
VERTICAL CONTROL MONUMENT #34
ELEVATION= 4552.47

BASIS OF BEARING

THE CITY OF GILLETTE HORIZONTAL
CONTROL NETWORK
***ALL MEASURED DISTANCES ARE
GRID. FOR CONVERSION TO
SURFACE, MULTIPLY BY 1.00026964.
***ALL AREAS ARE CALCULATED
AT SURFACE.

EASEMENT NOTES

- THE FOLLOWING EXISTING EASEMENTS HAVE BEEN CONSOLIDATED INTO THE 100' GENERAL UTILITY AND ACCESS EASEMENT & THE 110' GENERAL UTILITY EASEMENT:
 - 10' SANITARY SEWER EASEMENT, BOOK 1732 OF PHOTOS, PAGE 356
 - 20' GENERAL UTILITY EASEMENT, BOOK 9 OF PLATS, PAGE 7
 - 80' GENERAL UTILITY AND ACCESS EASEMENT, BOOK 9 OF PLATS, PAGE 7
 - 10' ELECTRICAL EASEMENT, BOOK 9 OF PLATS, PAGE 7
- THE EXISTING NORTHERLY 20' GENERAL UTILITY EASEMENT IN TRACT D SHOWN ON THE PLAT FILED IN BOOK 9 OF PLATS, PAGE 7 WAS RELOCATED TO THE PROPERTY LINE BETWEEN TRACTS B & C SHOWN ON THIS PLAT.