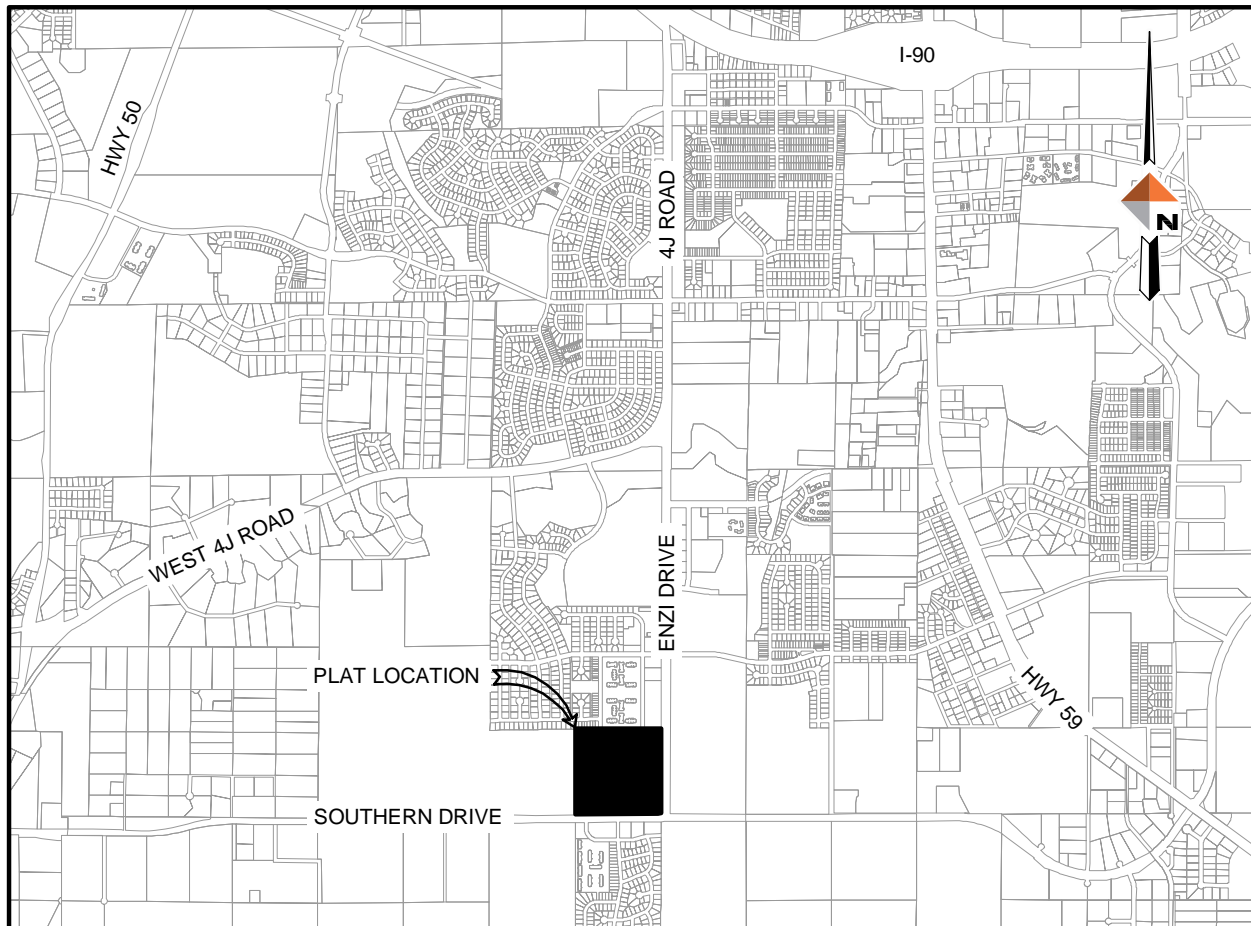


RESUBDIVISION OF TRACT B1, RC RANCH PHASE 1

TO BE KNOWN AS TRACT B2 AND LOT 2, RC RANCH PHASE 1, OF THE E 1/2, SECTION 4,
TOWNSHIP 49 NORTH, RANGE 72 WEST, OF THE 6TH P.M., CAMPBELL COUNTY, WYOMING



VICINITY MAP
NTS

CERTIFICATE OF OWNERSHIP

KNOW ALL MEN BY THESE PRESENTS THAT THE UNDERSIGNED CAMPBELL COUNTY SCHOOL DISTRICT NO. 1, BEING THE OWNER, PROPRIETOR OR PARTIES OF INTEREST IN THE LAND SHOWN ON THIS PLAT, DO HEREBY CERTIFY THAT THE FOREGOING PLAT DESIGNATED AS RESUBDIVISION OF TRACT B1, RC RANCH PHASE 1, IS LOCATED IN THE EAST 1/2 OF SECTION 4, TOWNSHIP 49 NORTH, RANGE 72 WEST, 6TH PRINCIPAL MERIDIAN, CAMPBELL COUNTY, WYOMING AND CONTAINS AN AREA OF 37.91 ACRES, MORE OR LESS, AND THAT THIS SUBDIVISION, AS IT IS DESCRIBED AND IS IT APPEARS ON THE PLAT, IS MADE FREE CONSENT AND IN ACCORDANCE WITH THE DESIRES OF THE UNDERSIGNED OWNER OF THE LAND SHOWN AND DESCRIBED ON THIS PLAT DOES HEREBY DEDICATE TO THE CITY OF GILLETTE AND ITS LICENSEES FOR PERPETUAL PUBLIC USE, ALL STREETS, ALLEYS, EASEMENTS AND OTHER PUBLIC LANDS WITHIN THE BOUNDARY LINES OF THE PLAT, AS INDICATED, AND NOT ALREADY OTHERWISE DEDICATED FOR PUBLIC UTILITY EASEMENTS, AS DESIGNATED ON THIS PLAT, ARE HEREBY DEDICATED TO THE CITY OF GILLETTE AND ITS LICENSEES FOR PERPETUAL PUBLIC USE, FOR THE PURPOSE OF INSTALLING, REPAIRING, REINSTALLING, REPLACING AND MAINTAINING SANITARY SEWER LINES, WATER LINES, GAS LINES, ELECTRIC LINES, TELEPHONE LINES, CABLE TV LINES AND OTHER FORMS AND TYPES OF PUBLIC UTILITIES NOW OR HEREAFTER GENERALLY UTILIZED BY THE PUBLIC. DRAINAGE EASEMENTS, AS DESIGNATED ON THIS PLAT, ARE HEREBY DEDICATED TO THE CITY OF GILLETTE AND ITS LICENSEES FOR PUBLIC USE, TO ACCOMMODATE THE FLOW OR STORAGE OF STORM WATERS AND SHALL BE KEPT FREE OF ALL FENCES, STRUCTURES OR OTHER IMPEDIMENTS. ALL RIGHTS UNDER AND BY VIRTUE OF THE HOMESTEAD EXEMPTION LAWS OF THE STATE OF WYOMING ARE HEREBY WAIVED AND RELEASED.

EXECUTED THIS _____ DAY OF _____, A. D. 20____ BY:

SUSAN SHIPPY, VICE CHAIRMAN

STATE OF WYOMING)
) SS.
CAMPBELL COUNTY)

THE FOREGOING INSTRUMENT WAS ACKNOWLEDGED BEFORE ME THIS:

____ DAY OF _____, A. D. 20____, DAY _____

WITNESS MY HAND AND OFFICIAL SEAL.

NOTARY PUBLIC

MY COMMISSION EXPIRES: _____

DECLARATION VACATING PREVIOUS PLATS

THIS PLAT IS THE RESUBDIVISION OF TRACT B1 OF RC RANCH PHASE 1 RESUBDIVISION, AS RECORDED IN BOOK 9, OF PLATS, PAGE 16, OF THE RECORDS PF THE CAMPBELL COUNTY CLERK, ALL EARLIER PLATS OR PORTIONS THEREOF, ENCOMPASSED BY THE BOUNDARIES OF THIS PLAT ARE HEREBY VACATED.

DISCLOSURE

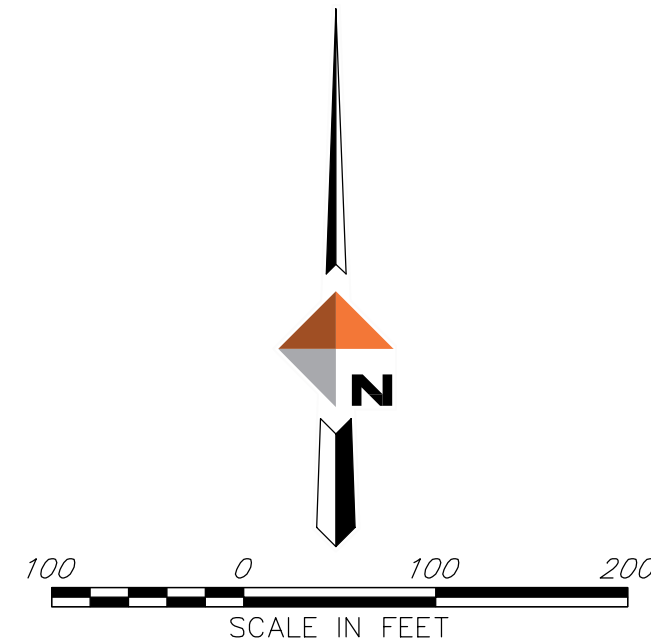
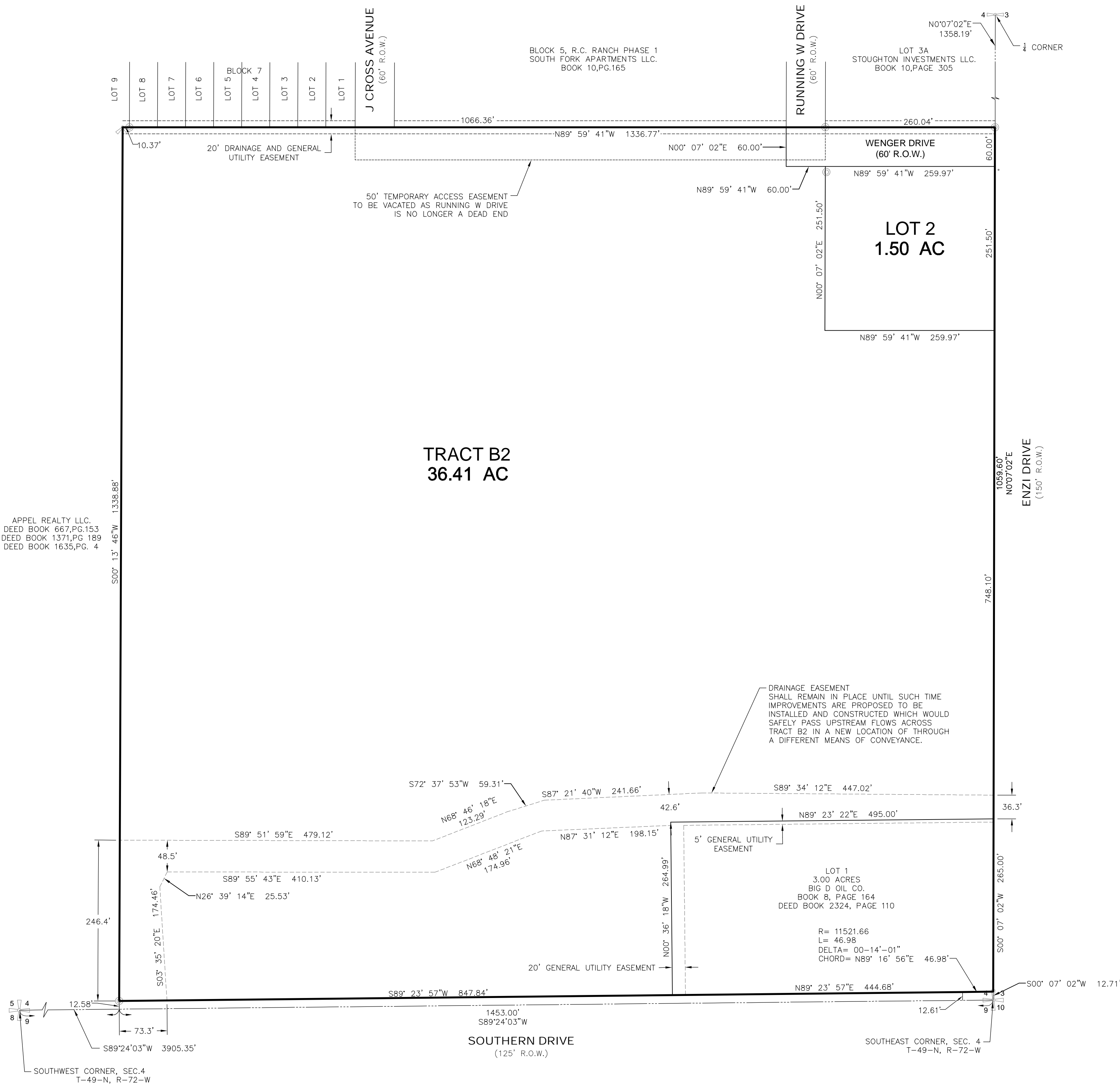
WATER AND SEWER SERVICES ARE NOT PROVIDED TO TRACT B2 OR LOT 1. WATER IS AVAILABLE WITHIN SOUTHERN DRIVE R.O.W. SEWER IS AVAILABLE ON THE EAST SIDE OF ENZI DRIVE.

LAND SURVEYOR CERTIFICATE

I, DEAN E. RAYNES, DO HEREBY CERTIFY THAT I AM A REGISTERED LAND SURVEYOR, LICENSED UNDER THE LAWS OF THE STATE OF WYOMING, THAT THIS PLAT IS A TRUE, CORRECT AND COMPLETE PLAT OF RESUBDIVISION OF TRACT B1, RC RANCH PHASE 1, AS LAID OUT, PLATTED, DEDICATED AND SHOWN HEREON, THAT SUCH PLAT WAS MADE FROM AN ACCURATE SURVEY OF SAID PROPERTY BY ME AND UNDER MY SUPERVISION AND CORRECTLY SHOWS THE LOCATION AND DIMENSIONS OF THE LOTS, EASEMENTS AND STREETS OF SAID SUBDIVISION AS THE SAME ARE STAKED UPON THE GROUND IN COMPLIANCE WITH CITY OF GILLETTE REGULATIONS GOVERNING THE SUBDIVISION OF LAND.

REGISTERED LAND SURVEYOR

NO. _____



CERTIFICATE OF THE CITY ENGINEER

DATA ON THIS PLAT REVIEWED THIS _____ DAY OF _____, 20____ BY THE CITY ENGINEER OF GILLETTE, WYOMING.

CITY ENGINEER

CERTIFICATE OF THE PLANNING COMMISSION

THIS PLAT APPROVED BY THE CITY OF GILLETTE PLANNING COMMISSION THIS _____

DAY OF _____, A. D. 20____

CHAIRMAN

SECRETARY

CERTIFICATE OF THE CITY COUNCIL

APPROVED BY THE CITY COUNCIL OF THE CITY OF GILLETTE, WYOMING, THIS _____

DAY OF _____, A. D. 20____

MAYOR

CITY CLERK

CERTIFICATE OF RECORDING BY THE COUNTY CLERK

THIS PLAT WAS FILED ON THIS _____ DAY OF _____, 20____, FOR RECORD IN THE

OFFICE OF THE CLERK AND RECORDER AT _____ O'CLOCK _____ M., AND IS DULY

RECORDED IN BOOK _____, PAGE NO. _____

COUNTY CLERK

LOT 2 TO BE CONVEYED TO THE CAMPBELL COUNTY FIRE DEPARTMENT

BASIS OF BEARING ARE: WYOMING STATE PLANE, EAST, WYOMING ZONE NAD 83. DISTANCES ARE - GROUND PAF: 1.002715489 (AT N:1381601.68 E:568452.05 EL: 4611.36) HT:4565.16)

LEGEND	
⊙	FOUND REBAR WITH CAP
●	SET REBAR WITH CAP
+	FOUND SECTION CORNER
⊞	FOUND 1/4 CORNER
⋈	FOUND 1/16 CORNER

RESUBDIVISION OF TRACT B1
RC RANCH, PHASE 1
FINAL PLAT

1901 Energy Court, #170
Gillette, Wyoming 82718
307-686-4181

REV. #	REVISION DESCRIPTION	DATE	BY