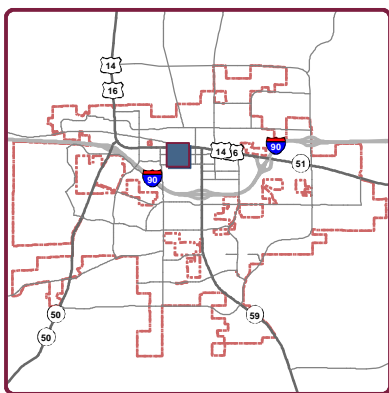
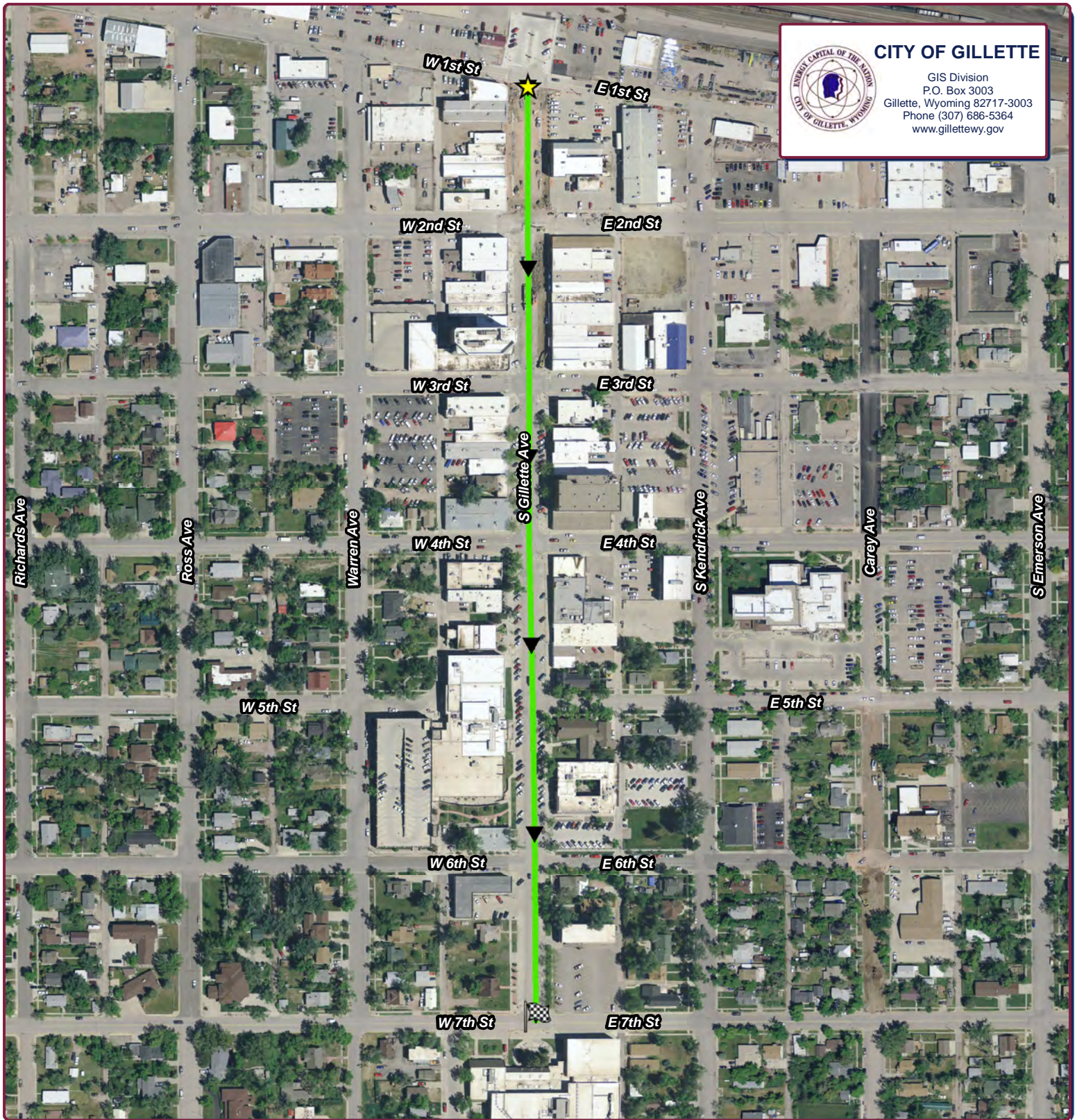




CITY OF GILLETTE

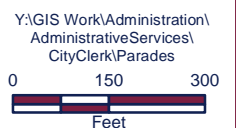
GIS Division
P.O. Box 3003
Gillette, Wyoming 82717-3003
Phone (307) 686-5364
www.gillettewy.gov



Legend

- ★ Parade Begins
- 🚩 Parade Ends
- ➡ Parade Route

THE INFORMATION ON THIS DRAWING WAS OBTAINED FROM RECORD AND DESIGN DRAWINGS. THE CITY OF GILLETTE MAKES NO GUARANTEE REGARDING THE ACCURACY OF THIS DRAWING OR THE INFORMATION CONTAINED THEREIN.



**Parade of Lights on
December 6th from
4:30pm to 7:00pm**

November 05, 2015

Service With P.R.I.D.E.
Productivity Responsibility Integrity Dedication Enthusiasm