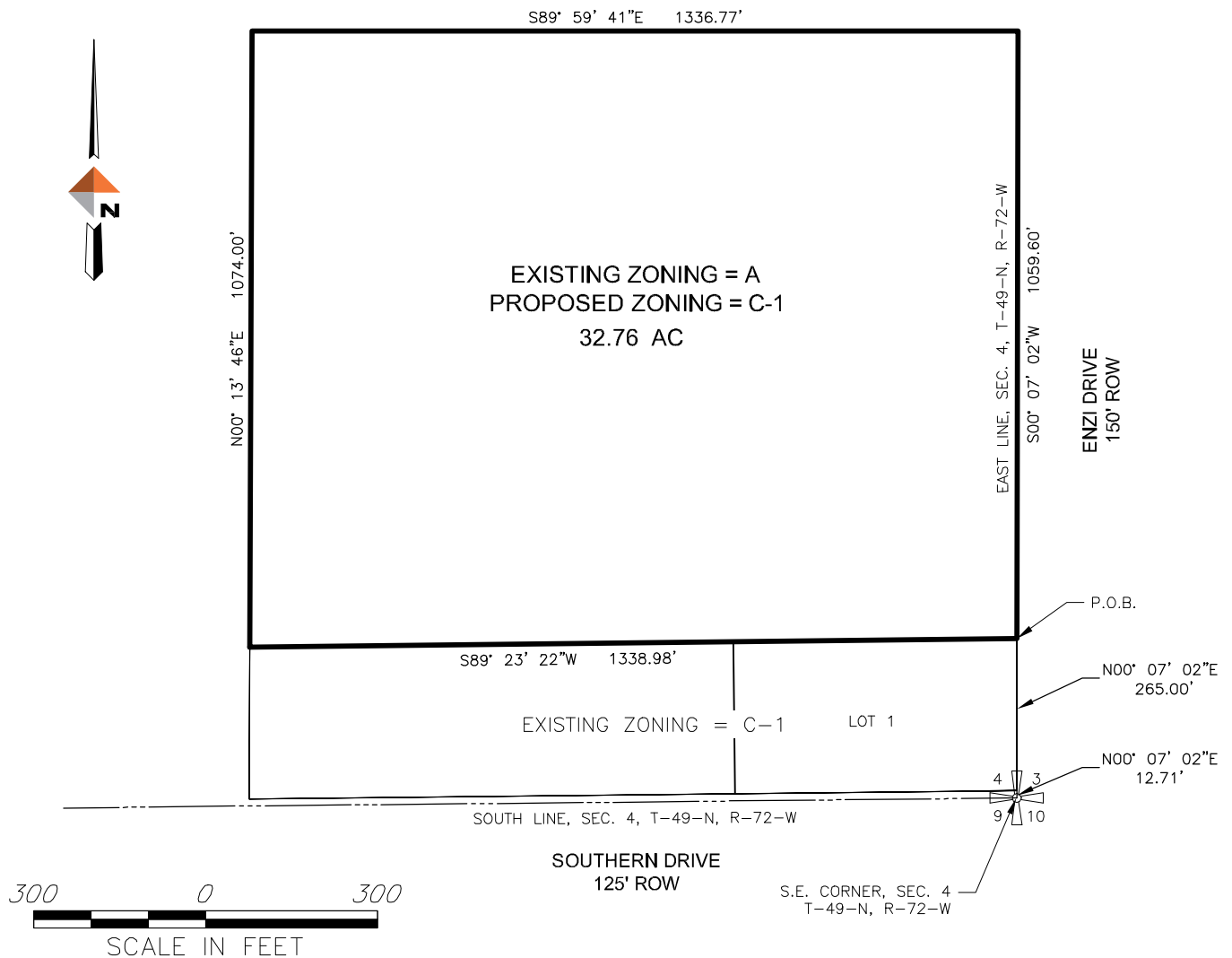


# EXHIBIT A

## REZONING LEGAL DESCRIPTION OF THE RESUBDIVISION OF RC RANCH PHASE I

Rezoning legal description of the Resubdivision of Tract B, RC Ranch, Phase I Subdivision, as recorded in the Office of the Recorder of Campbell County, Wyoming in Book 9, of Plats, Page 16, Folder 8, being a part of the Southeast Quarter of Section 4, Township 49 North, Range 72 West, more particularly described as follows;

Commencing at the Southeast corner of said Section 4, thence North 00 degrees 07 minutes 02 seconds East on and along the East line of said section a distance of 12.71 feet to the Southeast corner of Lot 1 of said Resubdivision of Tract B, RC Ranch Phase I; thence continuing North 00 degrees 07 minutes 02 seconds East on and along the East line of said Section 4 a distance of 265.00 feet to the Northeast corner of said Lot 1, point also being the Point of Beginning of the area to be rezoned; thence South 89 degrees 23 minutes 22 seconds West a distance of 1338.98 feet to a point on the West line of said resubdivision; thence North 00 degrees 13 minutes 46 seconds East on and along the West line of said resubdivision a distance of 1074.00 feet to the Northwest corner thereof; thence South 89 degrees 59 minutes 41 seconds East on and along the North line of said resubdivision a distance of 1336.77 feet to the Northeast corner thereof, said point also being on the east line of said section; thence South 00 degrees 07 minutes 02 seconds West on and along said east line of said section a distance of 1059.60 feet to the Point of Beginning, containing 32.76 acres more or less.



1901 Energy Court, Suite 170  
307-686-4181  
Gillette, Wyoming 82718  
www.dowlhkm.com

## RC RANCH PHASE I REZONING LEGAL DESCRIPTION

PROJECT 5322.26626.01  
DATE 07/15/2015

FIGURE A