

AVA Community Arts Center
Roof Replacement Project

POWDER RIVER HEATING & AIR CONDITIONING, INC.
PO BOX 245
GILLETTE, WY 82717

307-682-3009

O&M
Warranty

SPECIFICATION:

JOSAM 21500 SERIES COATED CAST IRON ROOF DRAIN, LARGE POLYPROPYLENE LOCKING DOME, WEJLOC® NON-PUNCTURING CLAMP RING WITH INTEGRAL GRAVEL STOP, LARGE SUMP WITH WIDE ROOF FLANGE AND BOTTOM OUTLET.

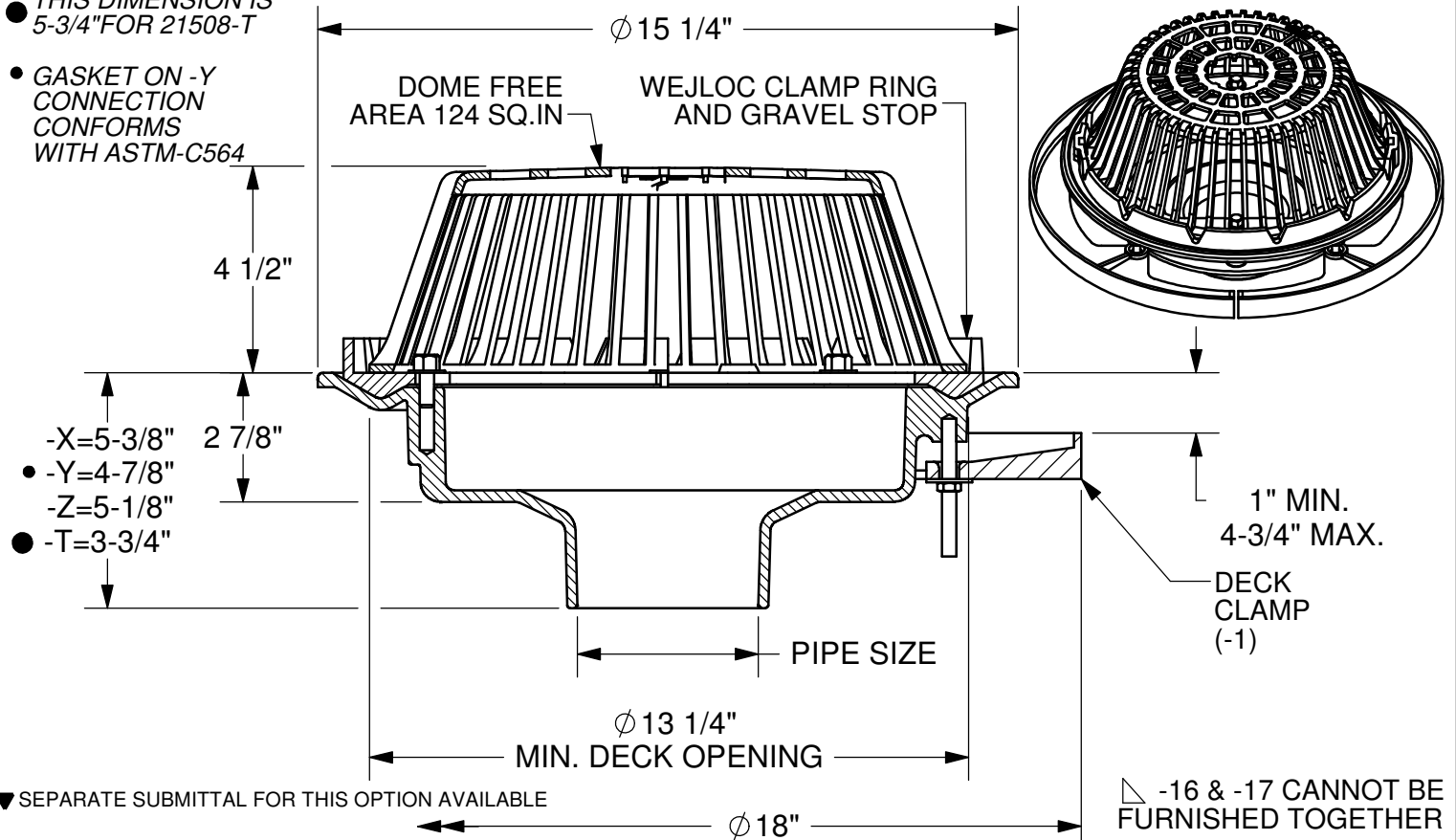
ROOF DRAIN LARGE SUMP

SERIES

21500

- THIS DIMENSION IS 5-3/4" FOR 21508-T

- GASKET ON -Y CONNECTION CONFORMS WITH ASTM-C564



	2"	PIPE SIZE		-2	DRAIN RECEIVER
	3"	PIPE SIZE		-3	DECK CLAMP ASY. AND DRAIN RECEIVER
	4"	PIPE SIZE		-3C	DRAIN RECEIVER AND DRAIN RECEIVER CLIPS
	5"	PIPE SIZE		-4	SECONDARY FLASHING CLAMP (-AE ONLY)
	6"	PIPE SIZE	▼	-6	EXTRA WIDE FLANGE DRAIN BODY (2"-6", -X OUTLET ONLY)
	8"	PIPE SIZE		-10	FIXED EXT. COLLAR, CAST IRON (SPECIFY HT. 4" STANDARD)
	10"	PIPE SIZE (NO-HUB ONLY)		-10-20	FIXED EXT. COLLAR, GALV. (SPECIFY HT. 4" STANDARD)
			▼	-16 ▽	INTERNAL WATERGUARD (2" THRU 6" OUTLETS ONLY)
				-16GLV ▽	INTERNAL WATERGUARD GALVANIZED STEEL (2"-6" OUTLETS ONLY)
	-X	INSIDE CAULK OUTLET	▼	-17 ▽	2" HIGH SOLID CLAMPING COLLAR
	-Y	HUB OUTLET W/GASKET (2", 3" & 4" SIZES ONLY)		-19	CLAMP COLLAR W/PERFORATED STAINLESS GRAVEL GUARD
	-Z	NO-HUB SPIGOT OUTLET		-20	GALV. CAST IRON PARTS
	-T	THREADED OUTLET		-21	GALV. CAST IRON DOME ONLY
				-22	CAST IRON DOME
				-23	ROUGH BRONZE DOME
▼	-AE	THREADED LEVEZE® ADJ. EXT.		-26	ALUMINUM DOME
▼	-AER	ADJ. EXT. USING THREADED RODS		-33	STAINLESS STEEL MESH-COVERED DOME
▼	-IRMA	PERFORATED STAINLESS STEEL EXT.		-66	NO-HUB SIDE OUTLET (2" THRU 6" OUTLETS ONLY)
	-CR	CLAMPING DRAIN RECEIVER (MIN. DECK OPENING ϕ 16")			
	-1	DECK CLAMP ASY.		-VP	VANDAL-PROOF DOME
	-1C	DRAIN RECEIVER CLIPS (MIN. DECK OPENING ϕ 16")			

DATE OF LAST CHANGE: 01/23/14

DIMENSIONS ARE SUBJECT TO MANUFACTURERS TOLERANCES AND CHANGE WITHOUT NOTICE. WE CAN ASSUME NO RESPONSIBILITY FOR USE OF SUPERSEDED OR VOID DATA.

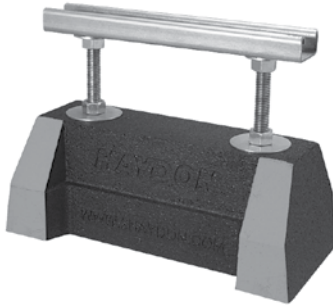
JOSAM COMPANY
MICHIGAN CITY, INDIANA

NOTES

HBS-CE Extension Series

☐ PG, ☐ HG

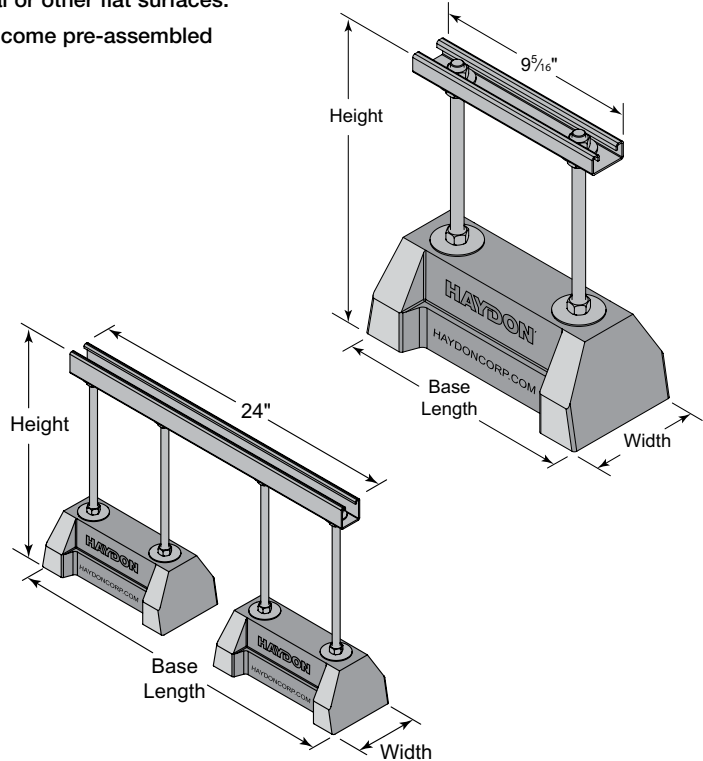
HBS-CE-EXTENSION SERIES SUPPORT WITH THREADED ROD EXTENSION AND CHANNEL



HBS-CE-Extension Series is perfect for supporting natural gas and refrigeration piping systems, cable tray, electrical conduit, multiple lines, HVAC equipment and many other applications.

The HBS-CE-Extension is UV resistant and suitable for installation on most types of roofing material or other flat surfaces.

Roof supports come pre-assembled



Specifications – HBS-CE
Two H-Block Bases and Threaded Rod Riser with:
1 3/16" H-164 Channel, or 1 5/8" H-132 Channel
Material - 100% recycled rubber, UV resistant

HBS-CE-EXTENSION SERIES SUPPORT WITH THREADED ROD EXTENSION AND CHANNEL

Model No.	Height	Width	Strut Length	Strut Size	Base Length	Weight (Lbs)	Uniform Load Capacity (Lbs) *
<input type="checkbox"/> HBS-CE10-8-H-164-PG	8" (203mm)	5" (127mm)	9.312" (237mm)	1 3/16" H-164	10 -7/8" (276mm)	6.89	1,000 *
<input type="checkbox"/> HBS-CE10-12-H-164-PG	12" (305mm)					7.34	1,000 *
<input type="checkbox"/> HBS-CE24-16-H-132-PG	16" (406mm)		24.000" (610mm)	1 -5/8" H-132	26" (660mm)	15.85	2,000 *

* This load is only for the capacity of the components in this assembly. Please consult roofing manufacturer or engineer for roof load capacity

Wt./100 pcs: See chart above.

LEGEND:

PG: Pre-Galvanized **HG:** Hot Dipped Galvanized Pricing is located in the Anvil H-Block price book.

PROJECT INFORMATION

APPROVAL STAMP

Project:	<input type="checkbox"/> Approved
Address:	<input type="checkbox"/> Approved as noted
Contractor:	<input type="checkbox"/> Not approved
Engineer:	Remarks:
Submittal Date:	
Notes 1:	
Notes 2:	

Powder River Heating and Air Conditioning, Inc.



*heating – air conditioning – refrigeration
plumbing – mechanical contracting – sheet metal work*

P.O. Box 245 - Gillette, WY 82717
Phone: (307) 682-3009 Fax: 682-8343

Arlyn Magnuson
President

Project: AVA (Roof Drains & Gas Piping)

Powder River Heating and Air Conditioning, Inc. agrees to warrant and guarantee materials and workmanship as described in the Plans & Specifications: **GUARANTEE AND WARRANTY.**

Warranty start date: SEPTEMBER 2015

Length: 1 YEAR

Powder River Heating and Air Conditioning is not responsible for items or systems that have failed due to improper or negligent maintenance as recommended by the manufacturer.

Some equipment may carry a manufacturer warranty beyond the first year period. Refer to the equipment's operations and maintenance manual for details.

Jaye Drake
Powder River Heating rep.