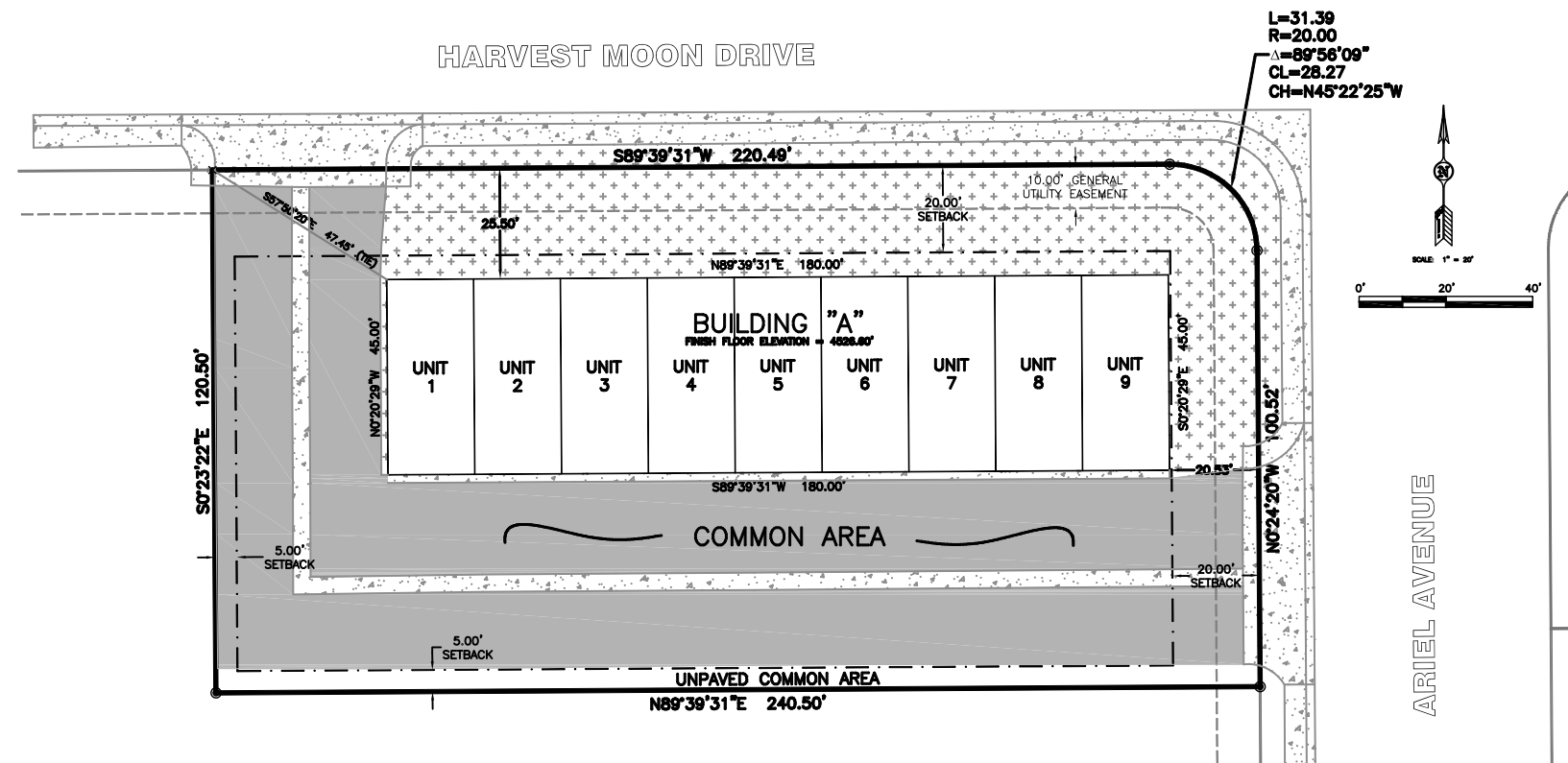


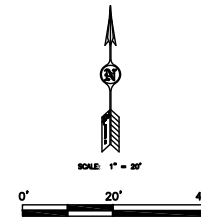
# AMENDED CONDOMINIUM PLAT OF BIG TOY STORAGE OF BUILDING "A"

LOCATED IN LOT 2A OF MOON MEADOWS ESTATES NO. 5 SUBDIVISION, CITY OF GILLETTE, CAMPBELL COUNTY, WYOMING

HARVEST MOON DRIVE



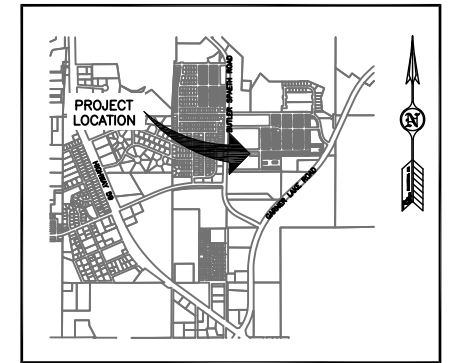
L=31.39  
R=20.00  
Δ=89°58'09"  
CL=28.27  
CH=N45°22'25"W



ARIEL AVENUE

## NOTES

1. NO TRASH ENCLOSURES TO BE ESTABLISHED.
2. PERMITTED USES: STORAGE UNITS (PURCHASED BY INDIVIDUALS)
3. PARKING SPACES: N/A
4. DRIVEWAY AREAS ARE ASPHALT WITH CONCRETE VALLEY PAN.
5. EXISTING CURB AND GUTTER IS ALL ROLLOVER.



VICINITY MAP

## LEGEND

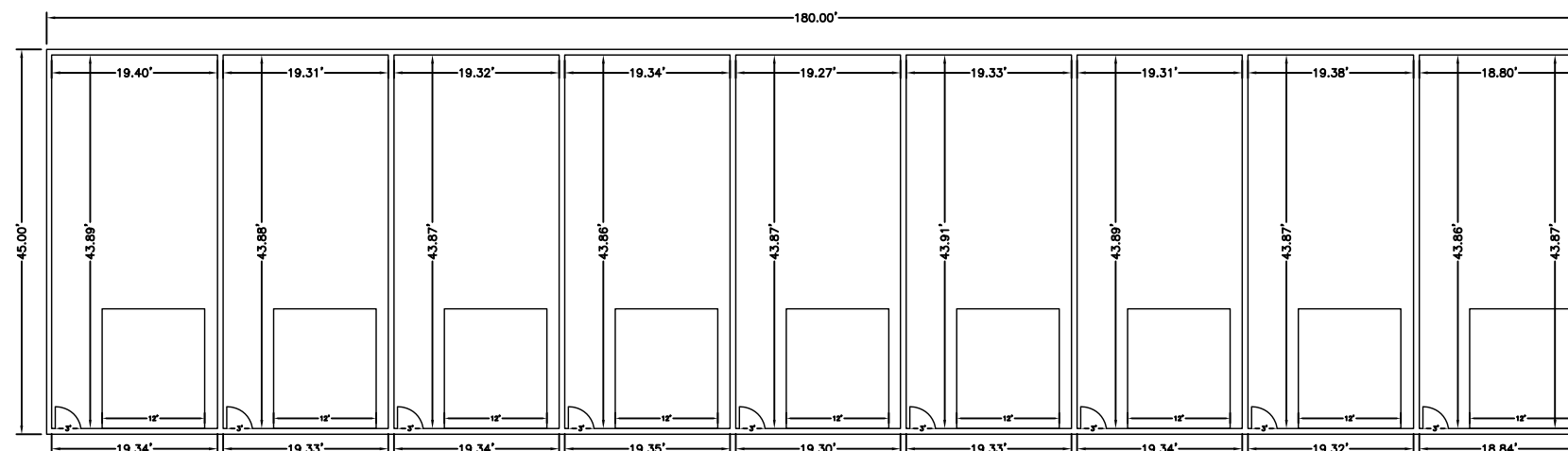
- FOUND REBAR AND ALUMINUM CAP STAMPED PLS 6872
- × FOUND CHISELLED "X" IN CONCRETE
- BOUNDARY
- - - EXISTING EASEMENT
- - - SETBACKS
- EXISTING ASPHALT PAVEMENT
- EXISTING CONCRETE
- EXISTING LANDSCAPE AREA

## BENCHMARK

BASED ON CITY OF GILLETTE  
VERTICAL CONTROL MONUMENT #10  
ELEVATION= 4501.38

## BASIS OF BEARING

THE CITY OF GILLETTE HORIZONTAL  
CONTROL NETWORK.  
\*\*\*ALL MEASURED DISTANCES ARE  
GRID. FOR CONVERSION TO  
SURFACE, MULTIPLY BY 1.00026964.  
\*\*\*ALL AREAS ARE CALCULATED  
AT SURFACE.



FLOOR PLAN

SCALE: 1" = 10'

15.97' FROM TOP OF CONCRETE  
SLAB TO BOTTOM OF DRYWALL

ELEVATION

SCALE: 1" = 10'

## GENERAL NOTES

1. "INDIVIDUAL AIR SPACE UNIT" MEANS A SINGLE UNIT DEPICTED ON THE MAP AND CONSISTING OF ALL ENCLOSED ROOMS LOCATED IN THE CONDOMINIUM UNIT AND BOUNDED BY THE INTERIOR SURFACES OF THE PERIMETER WALLS, FLOORS, CEILINGS AND DOORS THEREOF, TOGETHER WITH ALL NON-BEARING WALLS, FIXTURES, AND IMPROVEMENTS THEREIN CONTAINED. THE INTERIOR SURFACE WINDOW WHEN SUCH DOOR IS CLOSED. THE INDIVIDUAL AIR SPACE UNIT SHALL HEREINAFTER BE REFERRED TO AS THE "UNIT".
- 1.1. UNIT SHALL NOT INCLUDE ANY OF THE STRUCTURAL COMPONENTS OF THE BUILDING OR UTILITY OR SERVICE LINES LOCATED WITHIN THE UNIT BUT SERVING MORE THAN ONE UNIT. MOREOVER, THE INDIVIDUAL AIR SPACE UNIT SHALL NOT INCLUDE THE GENERAL COMMON ELEMENTS OR ANY OTHER PART OF THE BUILDINGS NOT EXPRESSLY DEFINED IN THIS SECTION. THE BOUNDARIES OF EACH UNIT ARE DELINEATED AND DESIGNATED BY AN IDENTIFYING NUMBER ON THE MAP.
2. "PROJECT" MEANS THE CONDOMINIUM COMMUNITY ESTABLISHED BY THIS DECLARATION KNOWN AS THE BIG TOY STORAGE OF BUILDING "A" OF GILLETTE, WY CONDOMINIUMS.
3. "LIMITED COMMON ELEMENTS" MEANS THOSE GENERAL COMMON ELEMENTS WHICH ARE RESERVED FOR USE BY FEWER THAN ALL THE OWNERS OF THE INDIVIDUAL AIR SPACE UNITS.
4. "GENERAL COMMON ELEMENTS" MEANS AND INCLUDES TH LAND ON WHICH A BUILDING IS LOCATED, INCLUDING, BUT NOT LIMITED TO, THE FOUNDATIONS, COLUMNS, GIRDERS, BEAMS, SUPPORTS, MAIN WALLS, ROOFS, STAIRS, STAIRWAYS, SIDEWALKS, YARDS, WALKWAYS, DRIVEWAYS, AND PARKING LOTS; INSTALLATIONS OF COMMON SERVICES, IF ANY, SUCH AS ELECTRICITY, POWER, LIGHT, WATER, HEATING, AIR CONDITIONING, TRASH COLLECTION, AND ALL OTHER FACILITIES ON SUCH LAND. THE GENERAL COMMON ELEMENTS SHALL BE OWNED AS TENANTS IN COMMON, BY THE OWNERS OF THE SEPARATE UNITS, EACH OWNER OF A UNIT HAVING AN UNDIVIDED INTEREST IN SUCH GENERAL COMMON ELEMENTS AS PROVIDED HEREIN.
5. "MAP" MEANS THE CONDOMINIUM PLAT, CONSISTING OF A MAP OF THE LAND, A LEGAL DESCRIPTION THEREOF, A FLOOR PLAN OF EACH TYPICAL UNIT WITHIN THE BUILDING, HORIZONTAL LOCATIONS OF BOUNDARIES OF EACH UNIT, UNIT IDENTIFICATION NUMBERS TOGETHER WITH SUCH OTHER INFORMATION AS MAY BE INCLUDED THEREOF IN THE DISCRETION OF THE DECLARANT. THE MAP IS INCORPORATED HEREIN BY THIS REFERENCE AND FILED WITH THE CLERK SIMULTANEOUSLY HEREWITH.
6. "BUILDINGS" MEANS THE ONE (1) BUILDING LOCATED ON THE REAL PROPERTY CONTAINING THE UNIT AS SHOWN ON THE MAP.
7. "CONDOMINIUM UNIT" OR "UNIT" MEAN THE SAME THING AND REFER TO THE FEE SIMPLE INTEREST AND TITLE IN AND TO THE INDIVIDUAL AIR SPACE UNIT AND AN UNDIVIDED FEE SIMPLE INTEREST IN THE GENERAL COMMON ELEMENTS.

Prepared for:

**FIRSTIER BANK**  
1508 STILLWATER AVENUE  
CHEYENNE, WY 82003  
(307) 632-3500

**PCA** CIVIL ENGINEERING  
SURVEYING  
MATERIAL TESTING  
ENGINEERING INC.

4508 Wagon Blvd.  
P.O. Box 2185  
Gillette, Wyoming 82718  
307-687-0400

COPYRIGHT © ALL RIGHTS RESERVED BY PCA ENGINEERING, INC.

Drawn by: SS Design by: DV Reviewed by: DV

Revision Date Revision Description

PCA Project Number: 153741.10

Plot Date: Jan 04, 2018 ~ 1:58pm

G:\PROJECTS\15374100 Commercial Lots 1 and 2 Moon

Main\Condo.dwg

Layout: Plot 1

X-Ref: ...

**AMENDED CONDOMINIUM  
PLAT OF BIG TOY  
STORAGE OF  
BUILDING "A"**

LOCATED IN LOT 2A OF MOON  
MEADOWS ESTATES NO. 5  
SUBDIVISION, CITY OF GILLETTE,  
CAMPBELL COUNTY, WYOMING

**CONDOMINIUM PLAT**

**SHEET 1 OF 2**