

CITY OF GILLETTE

Development Services Department
Engineering Division
P.O. Box 3003 • Gillette, Wyoming 82717-3003
Phone 307.686.5265
www.gillettewy.gov

April 8, 2016

Scott Heibult
Hladky Construction
1100 N Gurley Ave.
Gillette, WY 82716

RE: Downtown Facility Enhancement Prefabricated Restroom Structure 16EN20

Mr. Heibult:

Bids for the above referenced project were opened and read aloud by the City of Gillette Purchasing Division on March 22, 2016. Two contractors submitted bids. The bid that Hladky submitted is the apparent low bid. Both bids included the CXT Buildings Taos structure. The City has been considering Option selection for the Structure.

The City has determined that the Porcelain fixture Option is preferred (deduct of \$5000.00 from the Base Bid). Through email, Hladky provided a cost for an additional exterior appearance option of Board and Batten upper wall over a Field Stone lower wall (addition of \$2500 over the Base Bid) We would like that option with a minor change from Field Stone appearance to Napa Valley Stone appearance on the lower half.

Finally, from the color samples provided, the City would like the board and batten upper to be a Rich Earth, the Napa Valley stone finish to be a Mountain Blend, and the doors and roof to be a Georgia Brick.

We have estimated a change to the base bid of -\$2,500. Please consider these options and confirm in writing the final amount of your bid with the options discussed above.

Sincerely,

Todd M. Merchen, PE





Buildings Textures & Professional Site Maintenance & Replacement Park Products Government
 Colors Services & Install Warranty Parts Purchasing

Sales Region
 Information

WALL TEXTURES

Download printable versions

Colors Textures

Wall Textures Standard



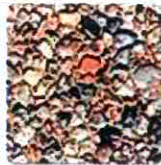
BARNWOOD



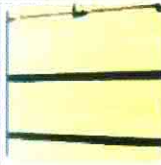
SPLIT FACE BLOCK



STUCCO



EXPOSED AGGREGATE



HORIZONTAL LAP
SIDING



BOARD & BAT



BRICK



FIELD STONE



RIVER ROCK



NAPA VALLEY

Roof Textures Standard



CEDAR SHAKE



DELTA



EXPOSED AGGREGATE



TILE

Optional

Specialty

Stone Color Options



MOUNTAIN BLEND



BASALT



NATURAL GREY



ROMANA

COLOR CHART



CXT

Precast Products

CXT Incorporated

an L.B. Foster Company

3808 N. Sullivan Rd., Bldg. #7

Spokane, WA 99216

Fax (509) 892-3207

Toll Free (800) 663-5789

Color Selections



Amber Rose



Liberty Tan



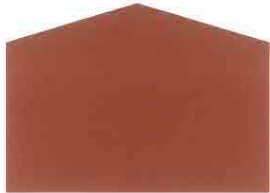
Toasted Almond



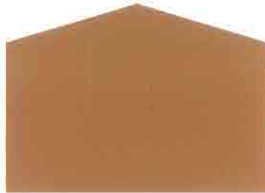
Oatmeal Buff



Buckskin



Sun Bronze



Golden Beige



Mocha Carmel



Sand Beige



Natural Honey



Salsa Red



Pueblo Gold



Cappuccino Cream



Cocoa Milk



Granite Rock



Georgia Brick



Western Wheat



Nuss Brown



Rich Earth
Top Board & Bat



Charcoal Gray



Berry Mauve



Rosewood



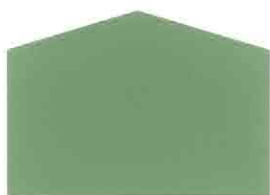
Malibu Taupe



Java Brown



Raven Black



Sage Green*



Evergreen†



Hunter Green†

DISCLAIMER: The color samples shown are approximations only. Jobsite-applied colors will vary from this color card due to printing variances as well as the texture and porosity of the substrate. CXT Inc. recommends applying a color sample to an inconspicuous area on the actual substrate to verify color choice.

*Additional cost for colored-through concrete.

†Not available in colored-through concrete.