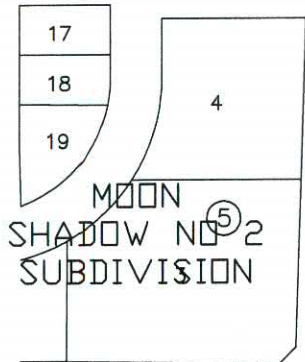


DECLARATION VACATING PREVIOUS PLATTING  
THIS PLAT IS THE RESUBDIVISION OF Tract T, MOON  
MEADOW ESTATES No. 3 AS RECORDED IN BOOK 8 OF  
PLATS, PAGE 231, LOT 2, EDWARDS SUBDIVISION AS  
RECORDED IN BOOK 7 OF PLATS, PAGE 55 AND LOTS 1A  
AND 1B, EDWARDS SUBDIVISION AS RECORDED IN  
BOOK 8 OF PLATS PAGE 206, OF THE RECORDS OF  
CAMPBELL COUNTY. ALL EARLIER PLAT OR PORTIONS  
THEREOF, ENCOMPASSED BY THE BOUNDARIES OF THIS  
PLAT ARE HEREBY VACATED.

I, Richard T. Doyle, do hereby certify that I am a registered land surveyor, licensed under the laws  
of the State of Wyoming, that this plat is a true, correct, and complete plat of DEVON ADDITION,  
as laid out, platted, dedicated and shown hereon, that such plat was made from an accurate survey  
of said property by me and under my supervision and correctly shows the location and dimensions  
of the lots, easements, and streets of said subdivision as the same are staked upon the ground in  
compliance with City of Gillette regulations governing the subdivision of the land.



TRACT C  
UNPLATTED



#### LEGEND

- FOUND CORNER MONUMENT
- SET 24" STEEL REBAR WITH ALCAP "PLS 2333"

SUMMARY  
TOTAL LOTS: 4  
R.O.W. AREA: N/A  
TOTAL AREA: 31.66 AC (1379245 S.F.)  
ZONING: I-1, C-3

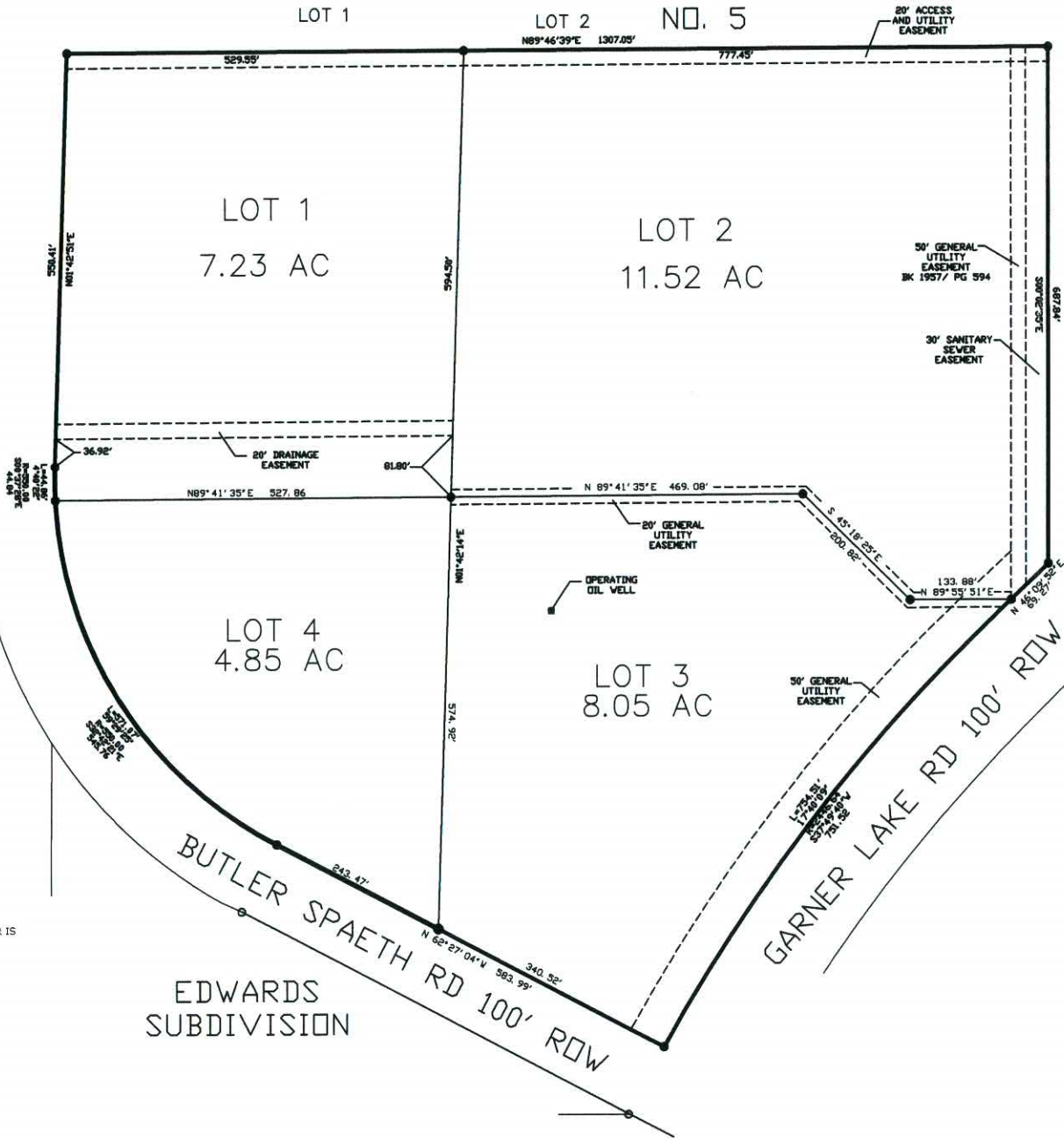
NOTE:  
PLAT FOR OWNERSHIP PURPOSES ONLY.  
FUTURE DEVELOPMENT SHALL MEET CURRENT  
STANDARD OF THE CITY OF GILLETTE. DEVELOPER IS  
RESPONSIBLE FOR ALL PUBLIC IMPROVEMENTS.

"CORRECTED PLAT" APPROVED BY THE CITY  
COUNCIL OF THE CITY OF GILLETTE, WYOMING  
THIS \_\_\_\_ DAY OF \_\_\_\_\_, 20\_\_\_\_ A.D.

## CORRECTED PLAT FINAL PLAT DEVON ADDITION

A RESUBDIVISION OF  
TRACT T, MOON MEADOW ESTATES NO 3,  
LOTS 1A & 1B, EDWARDS SUBDIVISION &  
LOT 2, EDWARDS SUBDIVISION NORTH AND EAST OF  
BUTLER SPAETH ROAD AND GARNER LAKE ROAD  
CITY OF GILLETTE, WYOMING  
SITUATED IN THE W1/2 NE1/4 SECTION 2  
T49N, R72W, SIXTH P.M.  
CAMPBELL COUNTY, WYOMING

MOON MEADOW ESTATES



## DEDICATION

Know all men by these presents that the undersigned Harlan Development LLC and  
Devon Energy Production LLC, being the owner, proprietor, or parties of interest in  
the land shown on this plat, do hereby certify,

The above and foregoing DEVON ADDITION being more particularly described as  
follows:

TRACT T, MOON MEADOW ESTATES NO. 3; LOTS 1A, 1B, EDWARDS SUBDIVISION  
AND LOT 2, EDWARDS SUBDIVISION NORTH AND EAST OF BUTLER SPAETH ROAD  
AND GARNER LAKE ROAD CITY OF GILLETTE, WYOMING, CAMPBELL COUNTY,  
WYOMING

Said tract of land contains 31.66 acres, more or less, subject to all rights,  
restrictions and/or easements of right and record, and as appears on this plat,  
is made with the free consent, and in accordance with the desires of the  
undersigned owners and proprietors, and that this is a correct plat of the area  
as it is divided in lots, blocks, streets and easements, and

That the undersigned owners and proprietors of the land shown and described  
on this plat do hereby dedicate to the City of Gillette for perpetual public use all  
streets, alleys, easements and other lands within the boundary lines of the plat  
as indicated and not already otherwise dedicated for public use. Utility  
easements as designated on this plat are hereby dedicated to the City of Gillette  
for perpetual public use for installing, repairing, replacing and maintaining  
water lines, sewers, gas lines, electrical lines, telephone lines, cable TV lines  
and the forms and types of public utilities now or hereafter generally utilized by  
the public.

Drainage easements, as designated on this plat, are hereby dedicated to the  
City of Gillette and its licensees for public use, to accommodate the flow or  
storage of storm waters and shall be kept free of all structures and other  
impediments.

All rights under and by virtue of the homestead exemption laws of the  
State of Wyoming are hereby waived and released.

Executed this \_\_\_\_ day of \_\_\_\_\_, A.D., 20\_\_\_\_ by:

Owner: Devon Energy Production LLC Owner: Harlan Development LLC

Title \_\_\_\_\_ Title \_\_\_\_\_  
For: Devon Energy Production LLC For: Harlan Development LLC

STATE OF WYOMING )  
COUNTY OF CAMPBELL ) SS

The foregoing instrument was acknowledged before me this \_\_\_\_ day  
of \_\_\_\_\_, A.D., 20\_\_\_\_, by \_\_\_\_\_  
as \_\_\_\_\_ (Title) for Harlan Development LLC as a  
free and voluntary act and deed.

Witness my hand and official seal.

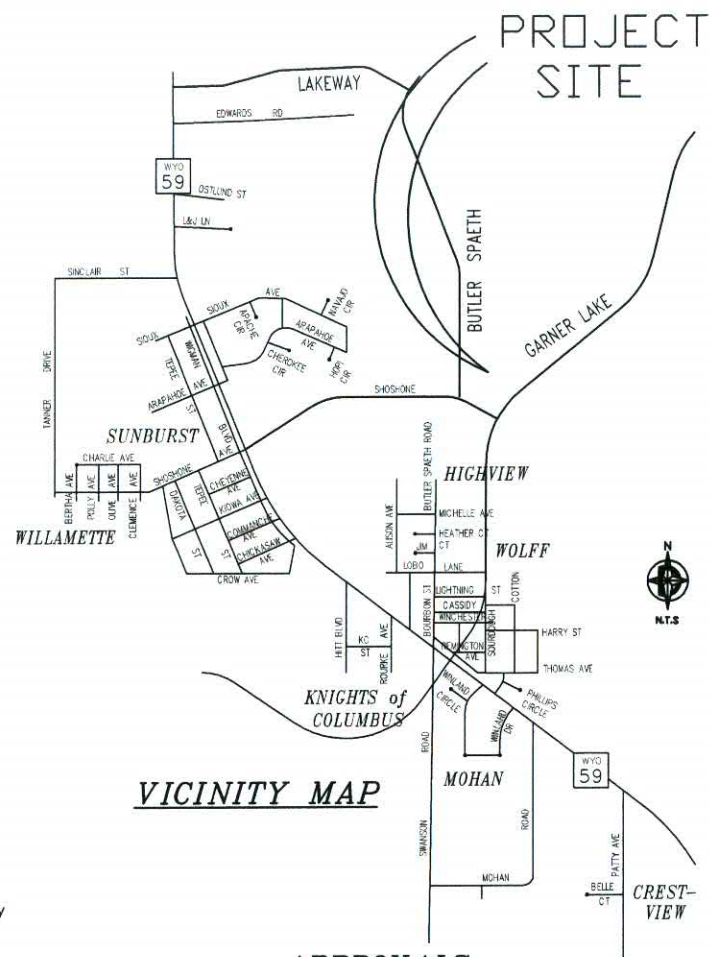
My Commission Expires \_\_\_\_\_

STATE OF )  
COUNTY OF ) SS

The foregoing instrument was acknowledged before me this \_\_\_\_ day  
of \_\_\_\_\_, A.D., 20\_\_\_\_, by \_\_\_\_\_  
as \_\_\_\_\_ (Title) for Devon Energy Production LLC as a  
free and voluntary act and deed.

Witness my hand and official seal.

My Commission Expires \_\_\_\_\_



### VICINITY MAP

### APPROVALS

Approved by the City of Gillette City Engineer this  
\_\_\_\_ day of \_\_\_\_\_, A.D., 20\_\_\_\_.

City Engineer

Approved by the City of Gillette Planning Commission this  
\_\_\_\_ day of \_\_\_\_\_, A.D., 20\_\_\_\_.

Chairman of the Planning Commission

Attest:

Clerk of the Planning Commission

Approved by the City Council of the City of Gillette, Wyoming this  
\_\_\_\_ day of \_\_\_\_\_, 20\_\_\_\_ A.D.

Mayor

City Clerk

CORRECTED PLAT

DEVON ADDITION  
GILLETTE, WY

Prepared for:  
DEVON ENERGY CORPORATION  
421 NW 13TH ST, STE 320  
Oklahoma City, OK 72103

Prepared by:  
DOYLE SURVEYING INC.  
801 E. Fourth St., Ste. 15  
Gillette, WY 82716  
Ph: (307)696-2410

Date of Preparation: DECEMBER, 2014

SHT 1 OF 1

This plat filed for record in the office of the Clerk  
and Recorder at \_\_\_\_ o'clock \_\_\_\_ M., \_\_\_\_\_  
20 \_\_\_\_ A.D. and is duly recorded in Book \_\_\_\_\_  
Page No. \_\_\_\_\_

County Clerk