

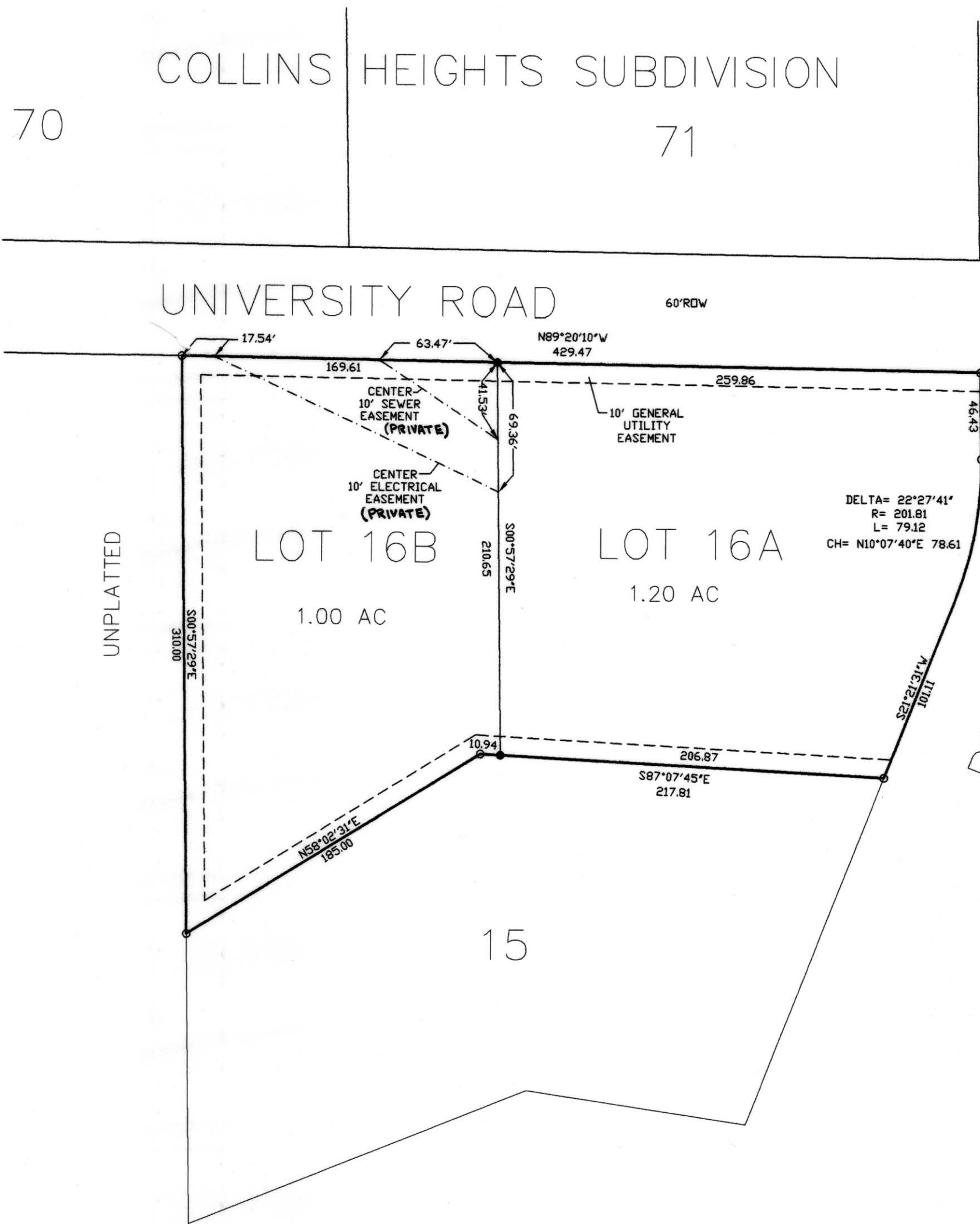
SURVEYOR'S CERTIFICATE

I, Richard T. Doyle, do hereby certify that I am a registered land surveyor, licensed under the laws of the State of Wyoming, that this plat is a true, correct, and complete plat of RESUBDIVISION OF LOT 16, INDUSTRIAL PARK EAST, as laid out, platted, dedicated and shown hereon, that such plat was made from an accurate survey of said property by me and under my supervision and correctly shows the location and dimensions of the lots, easements, and streets of said subdivision as the same are staked upon the ground in compliance with City of Gillette regulations governing the subdivision of the land.



DECLARATION VACATING PREVIOUS PLATTING THIS PLAT IS THE RESUBDIVISION OF LOT 16, INDUSTRIAL PARK EAST AS RECORDED IN BOOK 3 OF PLATS, PAGE 165, OF THE RECORDS OF CAMPBELL COUNTY. ALL EARLIER PLAT OR PORTIONS THEREOF, ENCOMPASSED BY THE BOUNDARIES OF THIS PLAT ARE HEREBY VACATED.

SCALE 1"= 60'



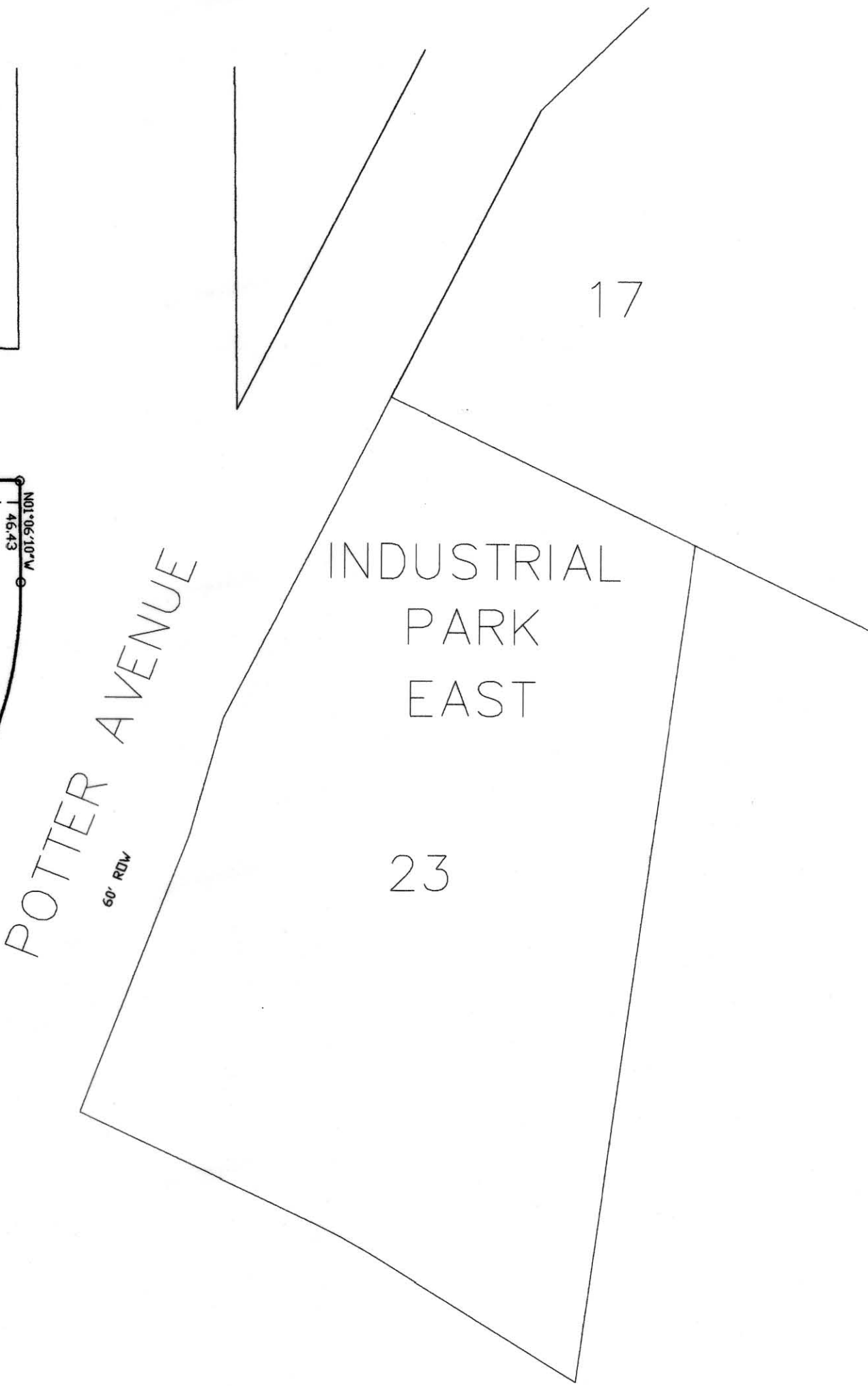
LEGEND

- FOUND 5/8" REBAR WITH SURVEY CAP
- SET 24" LONG 5/8" REBAR WITH ALUMINUM SURVEY CAP MARKED "RLS 2333"

SUMMARY
TOTAL LOTS: 2
R.O.W. AREA: N/A
TOTAL AREA: 2.20 AC
ZONING: R-S

NOTE
New development shall meet City of Gillette standards.

FINAL PLAT
RESUBDIVISION OF
LOT 16
INDUSTRIAL PARK EAST
TO BE KNOWN AS
LOTS 16A & 16B
INDUSTRIAL PARK EAST
CITY OF GILLETTE, WYOMING



VICINITY MAP

SCALE 1"= 24000

DEDICATION

Know all men by these presents that the undersigned KATHLEEN G MCCOY, being the owner, proprietor, or parties of interest in the land shown on this plat, do hereby certify,

The above and foregoing RESUBDIVISION OF LOT 16, INDUSTRIAL PARK EAST being more particularly described as follows:

LOT 16, INDUSTRIAL PARK EAST

Said tract of land contains 2.20 acres, more or less, subject to all rights, restrictions and/or easements of right and record, and as appears on this plat, is made with the free consent, and in accordance with the desires of the undersigned owners and proprietors, and that this is a correct plat of the area as it is divided in lots, blocks, streets and easements, and

That the undersigned owners and proprietors of the land shown and described on this plat do hereby dedicate to the City of Gillette for perpetual public use all streets, alleys, easements and other lands within the boundary lines of the plat as indicated and not already otherwise dedicated for public use. Utility easements as designated on this plat are hereby dedicated to the City of Gillette for perpetual public use for installing, repairing, replacing and maintaining water lines, sewers, gas lines, electrical lines, telephone lines, cable TV lines and the forms and types of public utilities now or hereafter generally utilized by the public.

All rights under and by virtue of the homestead exemption laws of the State of Wyoming are hereby waived and released.

Executed this 31st day of March, A.D., 20 14, by:

Owner: KATHLEEN G. MCCOY

Kathleen G. McCoy

STATE OF Wyoming)
COUNTY OF Campbell) ss

The foregoing instrument was acknowledged before me this 31st day of March, A.D., 20 14, by Kathleen G. McCoy, as a free and voluntary act and deed.

Caminda Zach
Notary Public
Witness my hand and official seal.

My Commission Expires May 23, 2017



APPROVALS

Data on this plat reviewed this 9th day of May, 20 14, A.D., by the City Engineer of Gillette, Wyoming.

City Engineer

This plat approved by the City of Gillette Planning Commission this 18th day of June, 20 13, A.D.

Chairman
Secretary

Approved by the City Council of the City of Gillette, Wyoming this 13th day of July, 20 13, A.D.

Mayor
City Clerk

This plat filed for record in the office of the Clerk and Recorder at 11:16 o'clock a.m., May 9, 20 14, and is duly recorded in Book 10, Page No. 225.

County Clerk

FINAL PLAT
RESUBDIVISION OF LOT 16,
INDUSTRIAL PARK EAST
GILLETTE, WYOMING

PREPARED FOR:
Kathleen G. McCoy
PO BOX 3583
GILLETTE, WY 82717

PREPARED BY:
DOYLE SURVEYING, INC.
801 E. Fourth St.
Suite 16
Gillette, WY 82716
PH: (307) 686-2410

DATE OF PREPARATION: MAY, 2013

SHT 1 OF 1

REVISED: NOV, 2013