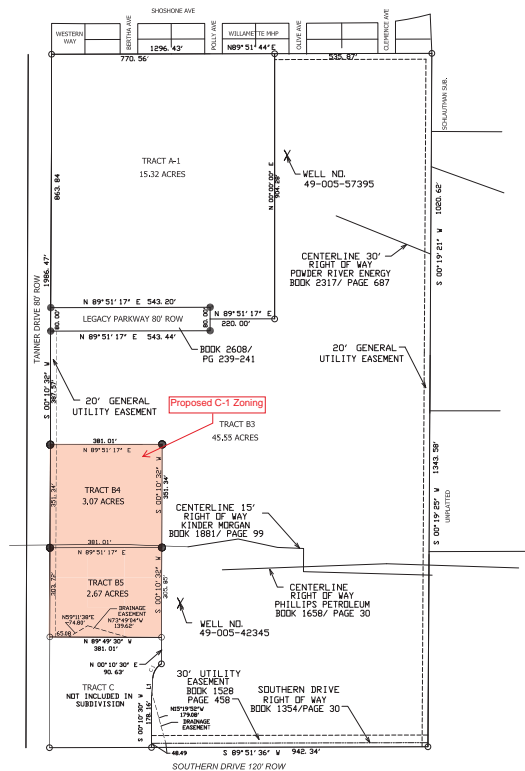


DECLARATION VACATING PREVIOUS PLATTING  
THIS PLAT IS THE RESUBDIVISION OF TRACT A AND B2,  
LEGACY POINTE AS RECORDED IN BOOK 9 OF PLATS,  
PAGE 289 AND BOOK 9 OF PLATS, PAGE 317 OF THE  
RECORDS OF CAMPBELL COUNTY. ALL EARLIER PLAT OR  
PORTIONS THEREOF, ENCOMPASSED BY THE  
BOUNDARIES OF THIS PLAT ARE HEREBY VACATED.

### SURVEYOR'S CERTIFICATE

I, Richard T. Doyle, do hereby certify that I am a registered land surveyor, licensed under the laws of the State of Wyoming, that this plat is a true, correct, and complete plat of TRACTS A1, B3, B4 AND B5, LEGACY POINTE, as laid out, platted, dedicated and shown hereon, that such plat was made from an accurate survey of said property by me and under my supervision and correctly shows the location and dimensions of the lots, easements, and streets of said subdivision as the same are staked upon the ground in compliance with City of Gillette regulations governing the subdivision of the land.



### LEGEND

- FOUND CORNER MONUMENT
- SET 24" STEEL REBAR WITH ALCAP "PLS 2333"

SUMMARY  
TOTAL LOTS: 4  
R.O.W. AREA: N/A  
TOTAL AREA: 67.10 AC  
ZONING: R-4

DEVELOPER SHALL BE RESPONSIBLE FOR  
INSTALLING WATER, SANITARY SEWER,  
DRAINAGE AND STREET IMPROVEMENTS AT THE  
TIME OF DEVELOPMENTS FOR EACH RESPECTIVE  
TRACT.

FOR OWNERSHIP PURPOSES, ONLY, ANY FUTURE  
DEVELOPMENT SHALL UNDERGO CITY REVIEW  
PRIOR TO ANY DEVELOPMENT.

LINE TABLE			
LINE	BEARING	LENGTH	
L1 (REC.)	N44°00'24"E	60.39'	
L1 (MEAS.)	N43°51'24"E	59.58'	
CURVE TABLE			
CURVE	CENTRAL ANGLE	LENGTH	RADIUS
C1 (REC.)	57°00'19"	59.70	60.00
C1 (MEAS.)	55°47'41"	58.43	60.00
CHORD	CHORD BEARING		
	S31°40'21"W	57.26	
	S31°31'11"W	56.15	

## FINAL PLAT TRACTS A1, B3, B4 AND B5 LEGACY POINTE

A RESUBDIVISION OF  
TRACTS A, B1 AND B2  
LEGACY POINTE  
CITY OF GILLETTE, WYOMING  
CAMPBELL COUNTY, WYOMING

## DEDICATION

Know all men by these presents that the undersigned JIB ENTERPRISES, LLC; CITY OF GILLETTE AND THE CAMPBELL COUNTY SCHOOL DISTRICT NO. 1 being the owner, proprietor, or parties of interest in the land shown on this plat, do hereby certify,

The above and foregoing TRACTS A1, B3, B4 AND B5, LEGACY POINTE, CITY OF GILLETTE, WYOMING being more particularly described as follows:

TRACTS A, B1 AND B2, LEGACY POINTE, CITY OF GILLETTE, WYOMING, CAMPBELL COUNTY, WYOMING

Said tract of land contains 67.10 acres, more or less, subject to all rights, restrictions and/or easements of right and record, and as appears on this plat, is made with the free consent, and in accordance with the desires of the undersigned owners and proprietors, and that this is a correct plat of the area as it is divided in lots, blocks, streets and easements, and

That the undersigned owners and proprietors of the land shown and described on this plat do hereby dedicate to the City of Gillette for perpetual public use all streets, alleys, easements and other lands within the boundary lines of the plat as indicated and not already otherwise dedicated for public use. Utility easements as designated on this plat are hereby dedicated to the City of Gillette for perpetual public use for installing, repairing, replacing and maintaining water lines, sewer, gas lines, electrical lines, telephone lines, cable TV lines and the forms and types of public utilities now or hereafter generally utilized by the public.

Drainage easements, as designated on this plat, are hereby dedicated to the City of Gillette and its licensees for public use, to accommodate the flow or storage of storm waters and shall be kept free of all structures and other impediments.

All rights under and by virtue of the homestead exemption laws of the State of Wyoming are hereby waived and released.

Executed this \_\_\_\_\_ day of \_\_\_\_\_, A.D., 20\_\_\_\_ by:

Owners: JIB ENTERPRISES LLC CAMPBELL COUNTY SCHOOL DISTRICT NO. 1

BRUCE L. HITT AS FOR JIB ENTERPRISES LLC  
NAME: \_\_\_\_\_  
AS FOR CAMPBELL COUNTY SCHOOL DISTRICT NO. 1

CITY OF GILLETTE ATTEST: