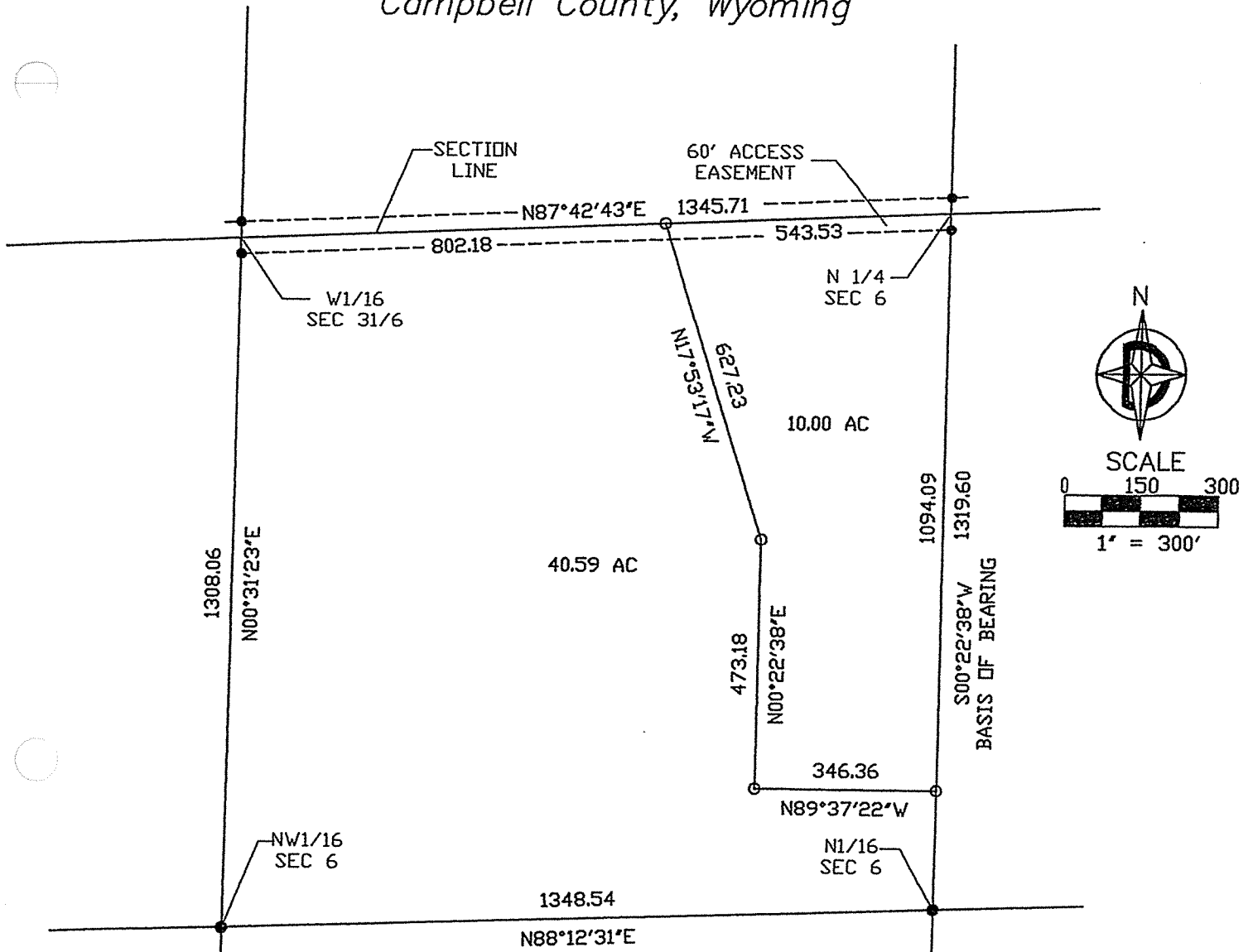


NE1/4 NW1/4, SECTION 6  
T49N, R72W of the 6TH P.M.  
Campbell County, Wyoming

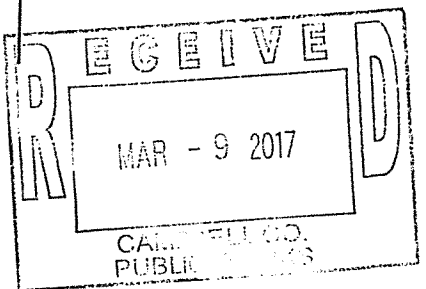


## SURVEYOR'S CERTIFICATE

I, Richard T. Doyle, of Gillette, Wyoming, hereby certify that this plat was made from notes taken during and actual survey performed under my direct supervision during the months of March and April, 2017, and that said survey is accurately represented on this plat and is set out on the ground as shown hereon.

### LEGEND

- FOUND CORNER MONUMENT
- SET 5/8" REBAR  
W/ALCAP 2333'



PREPARED FOR:  
Kelly Tonn Childrens  
Living Trust  
PO Box 393  
Sidney, MT 59270

DATE OF PREPARATION:  
3/9/2017

PREPARED BY:  
**DOYLE SURVEYING, INC.**  
801 E. Fourth St.  
Suite 15  
Gillette, WY 82716  
PH: (307) 686-2410