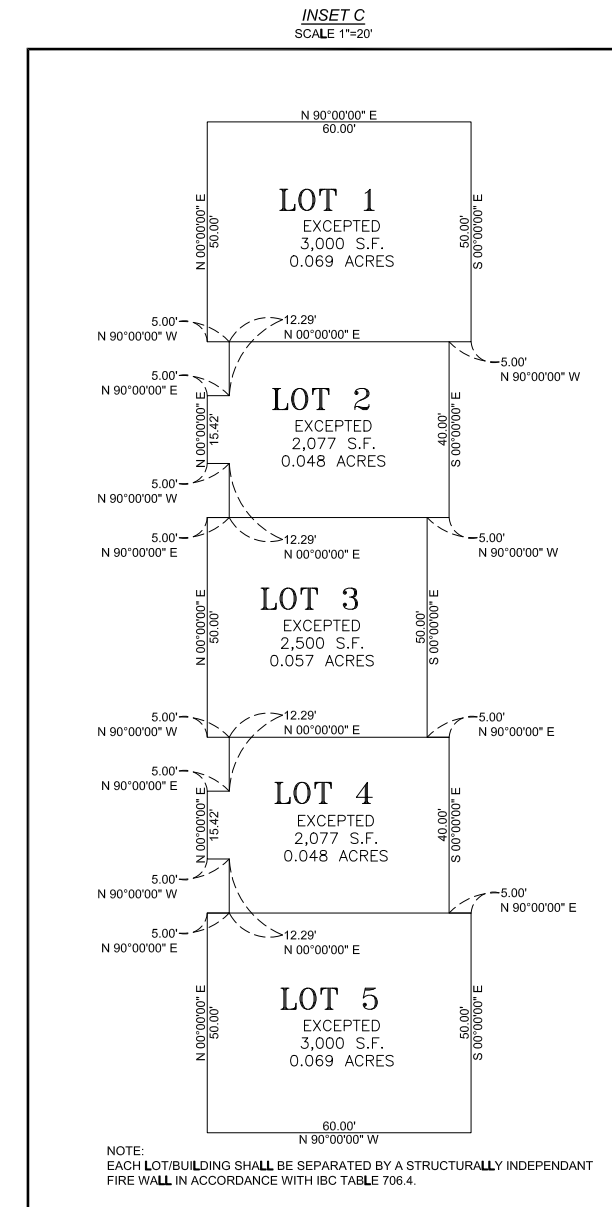
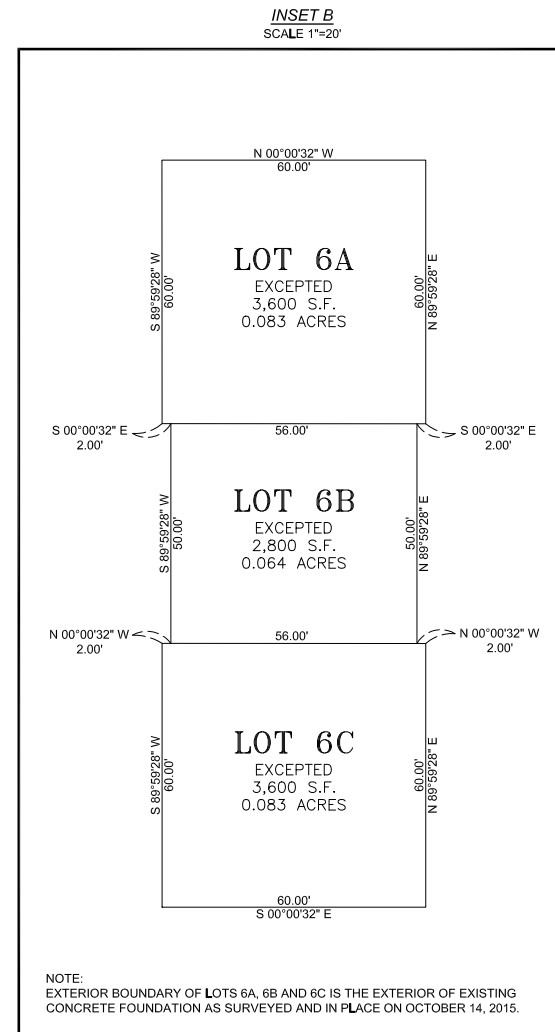
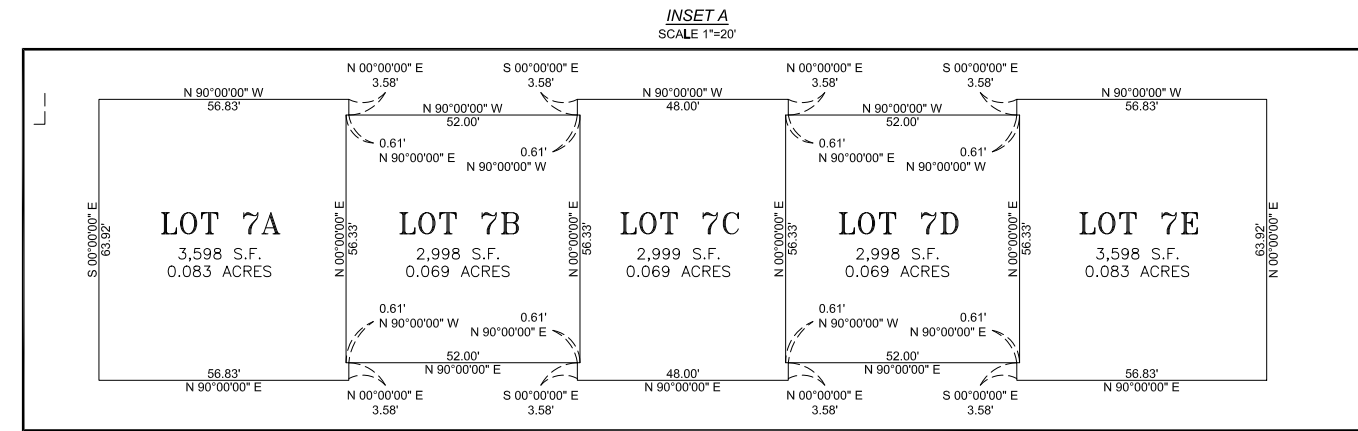
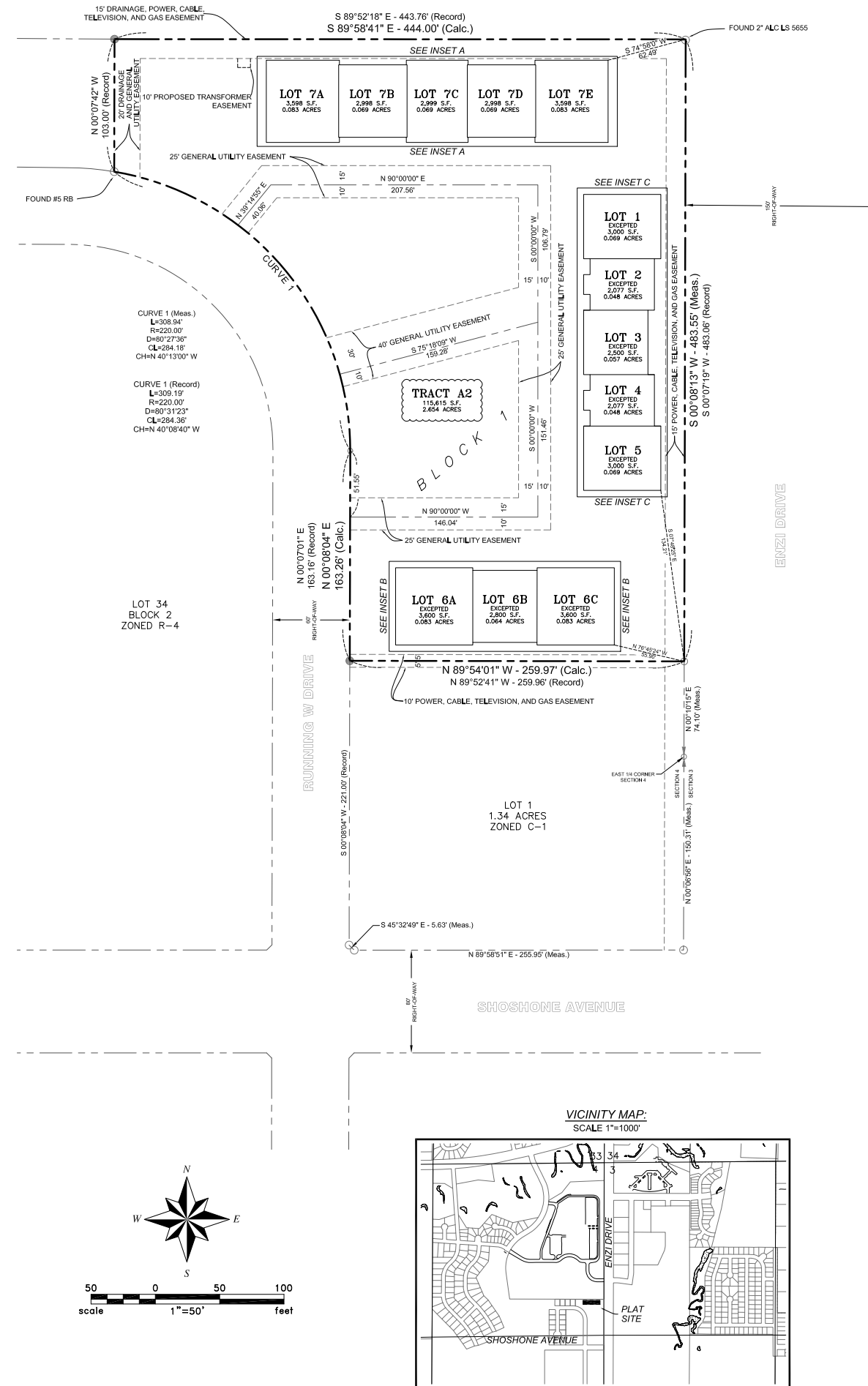


PRELIMINARY AMENDED PUD PLAT

RC RANCH BUSINESS PARK I TO THE CITY OF GILLETTE

A RE-SUBDIVISION TO LOT 7 AND TRACT A1, TO BE KNOWN AS: LOTS 7A, 7B, 7C, 7D, 7E AND TRACT A2, RC RANCH BUSINESS PARK I, BEING PART OF THE RE-SUBDIVISION OF LOT 2, BLOCK 1, PHASE 1, RC RANCH SUBDIVISION, TO THE CITY OF GILLETTE, NORTHEAST 1/4, SECTION 4, TOWNSHIP 49 NORTH, RANGE 72 WEST, OF THE 6TH P.M., CAMPBELL COUNTY, WYOMING



BASIS OF BEARINGS:
THE BASIS OF BEARINGS IS CITY OF GILLETTE HORIZONTAL CONTROL NETWORK.

BENCH MARK
THE BENCHMARKS ARE CITY OF GILLETTE VERTICAL CONTROL MONUMENTS VCM#34 AND VCM#51.

PLAT INFORMATION:
LOT 7A, 7B, 7C, 7D, 7E ACREAGE - 0.372 ACRES
TRACT A2 ACREAGE - 2.654 ACRES
R/W ACREAGE - 0.000 ACRES
TOTAL ACREAGE - 3.026 ACRES

NO. OF LOTS - 5
NO. OF TRACTS - 1

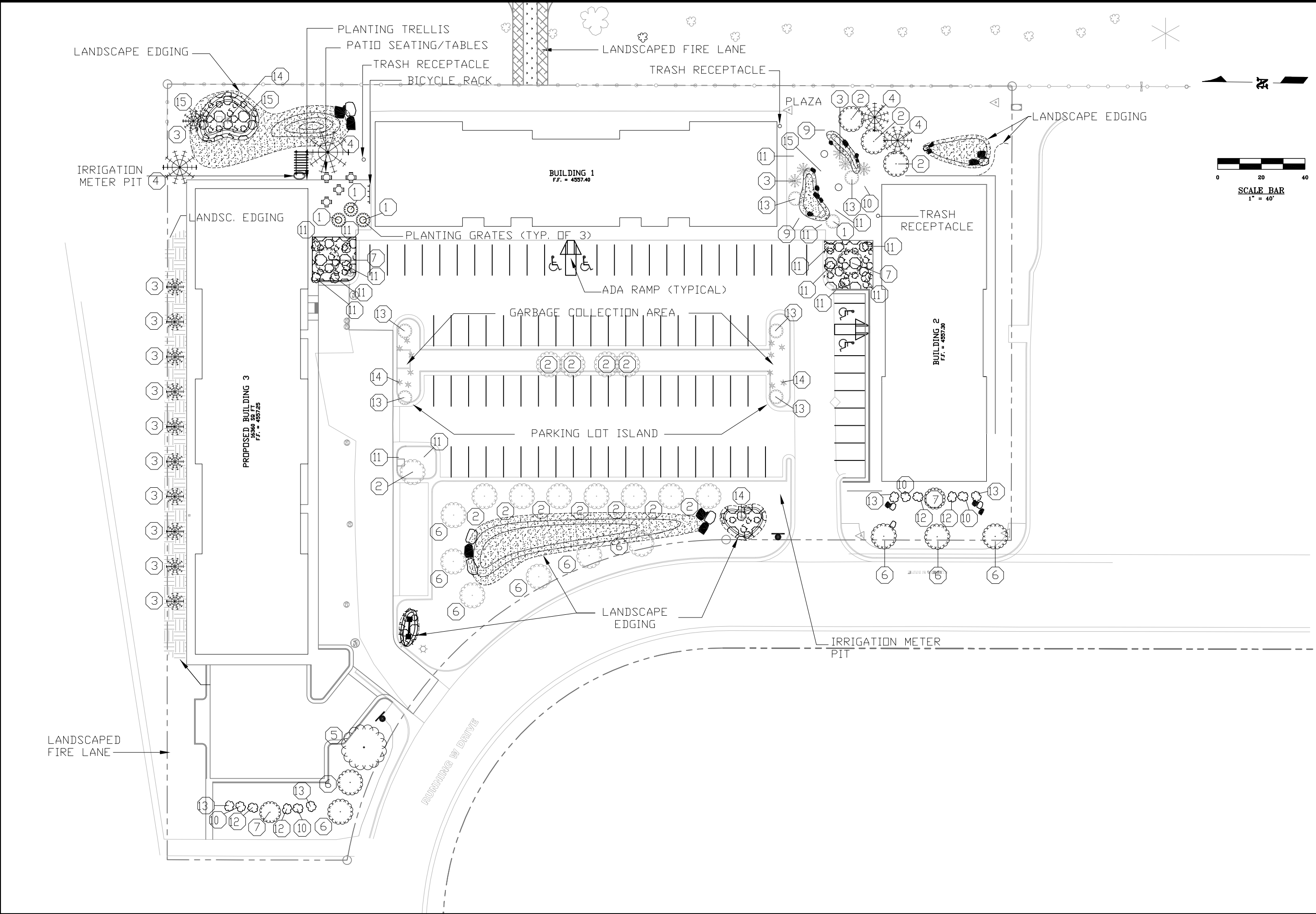
PLAT LEGEND:
○ DENOTES FOUND 2" ALC PLS 4769 EXCEPT AS NOTED
● DENOTES CALCULATED CORNER

ENGINEER:
KLJ, INC.
640 N. HIGHWAY 14-16 UNIT K
GILLETTE, WY 82716-2531
PHONE 307-682-9500

OWNER:
S&S BUILDERS, LLC
400 N. ENTERPRISE AVENUE
GILLETTE, WY 82716
307-686-5659

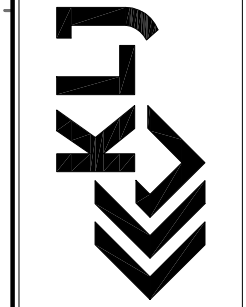
DECLARATION VACATING PREVIOUS PLATTING
THIS PLAT IS THE RESUBDIVISION OF LOT 7 AND TRACT A1 OF RC RANCH BUSINESS PARK I, AS DESCRIBED IN BOOK 10 OF PLATS, PAGE 397, OF THE RECORDS OF THE CAMPBELL COUNTY CLERK. ALL EARLIER PLATS OR PORTIONS THEREOF, ENCOMPASSED BY THE BOUNDARIES OF THIS PLAT ARE HEREBY VACATED.





REV. #	REVISION DESCRIPTION	DATE	BY

**RC RANCH BUSINESS PARK I
 BUILDING 3
 LANDSCAPE PLAN**



640 N HWY 14-16 UNIT K
 GILLETTE, WY 82716
 307.682.9500
 WWW.KLJENG.COM

COPYRIGHT © 2016
 KLJ
 ALL RIGHTS RESERVED

DATE: 07/06/2016
 JOB NO: 11616102
 DRAWN BY: ZIF
 APPROVED BY: DRP

LANDSCAPE PLAN
 LP-1