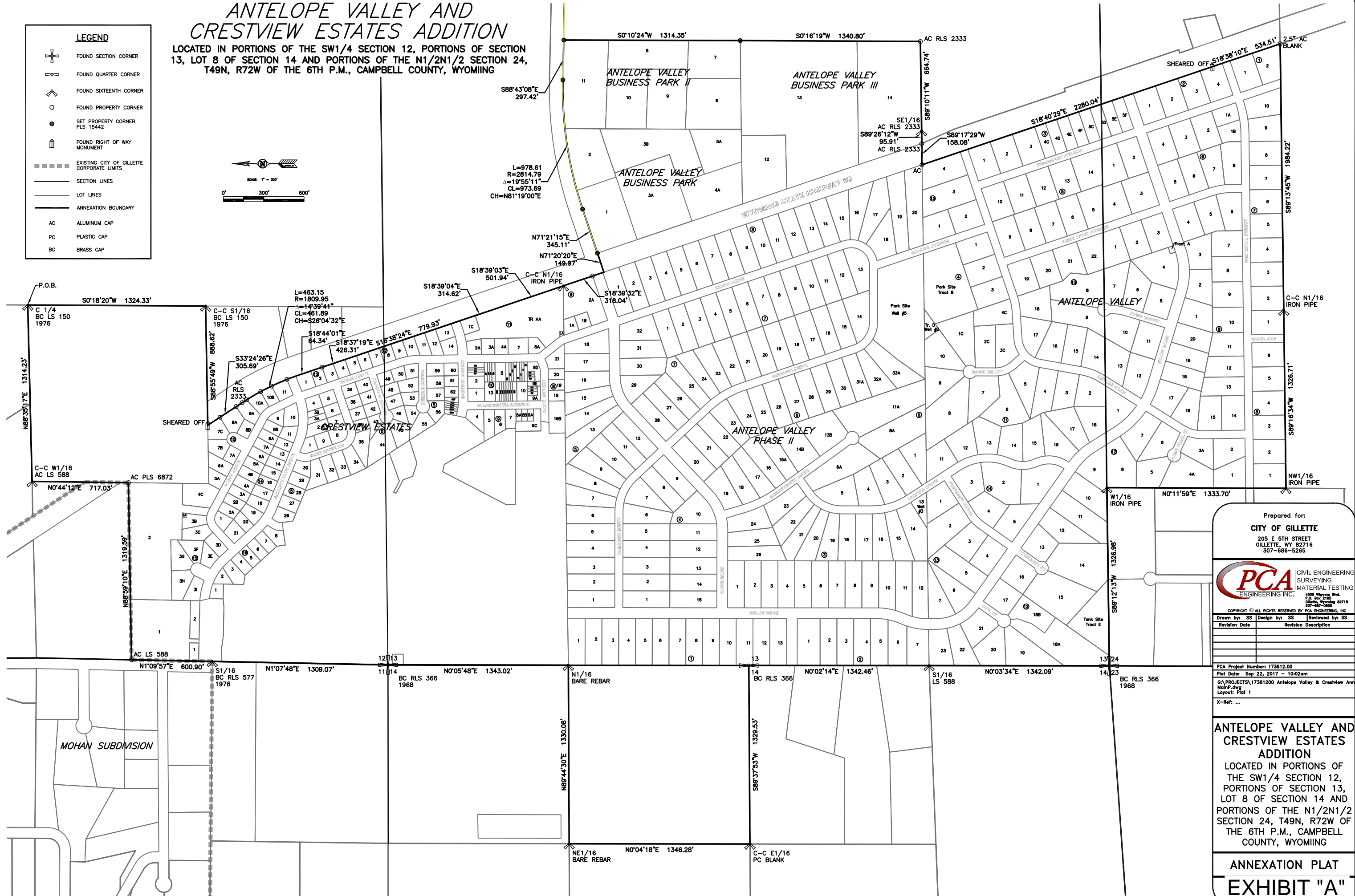
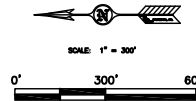


ANTELOPE VALLEY AND CRESTVIEW ESTATES ADDITION

LOCATED IN PORTIONS OF THE SW1/4 SECTION 12, PORTIONS OF SECTION 13, LOT 8 OF SECTION 14 AND PORTIONS OF THE N1/2N1/2 SECTION 24, T49N, R72W OF THE 6TH P.M., CAMPBELL COUNTY, WYOMING

LEGEND

- FOUND SECTION CORNER
- FOUND QUARTER CORNER
- FOUND SIXTEENTH CORNER
- FOUND PROPERTY CORNER
- SET PROPERTY CORNER
PLS 15442
- FOUND RIGHT OF WAY
MONUMENT
- EXISTING CITY OF GILLETTE
CORPORATE LIMITS
- SECTION LINES
- LOT LINES
- ANNEXATION BOUNDARY
- AC ALUMINUM CAP
- PC PLASTIC CAP
- BC BRASS CAP



Prepared for:
CITY OF GILLETTE
205 E 5TH STREET
GILLETTE, WY 82716
307-686-5265



COPYRIGHT © ALL RIGHTS RESERVED BY PCA ENGINEERING, INC.

Drawn by: SS Design by: SS Reviewed by: SS

Revision Date Revision Description

PCA Project Number: 17381200

Plot Date: Sep 22, 2017 - 10:02am

SA PROJECTS\17381200 Antelope Valley & Crestview Ann

MainP.dwg

Layout: Plot 1

X-Ref: ...

ANTELOPE VALLEY AND CRESTVIEW ESTATES ADDITION

LOCATED IN PORTIONS OF
THE SW1/4 SECTION 12,
PORTIONS OF SECTION 13,
LOT 8 OF SECTION 14 AND
PORTIONS OF THE N1/2N1/2
SECTION 24, T49N, R72W OF
THE 6TH P.M., CAMPBELL
COUNTY, WYOMING

ANNEXATION PLAT EXHIBIT "A"