

# CERTIFICATE OF DEDICATION

THE ABOVE OR FOREGOING SUBDIVISION OF ROCKY BUTTE INDUSTRIAL PARK, IS LOCATED IN THE W1/2SW1/4 OF SECTION 19, TOWNSHIP 49 NORTH, RANGE 71 WEST, 6TH PRINCIPAL MERIDIAN, CAMPBELL COUNTY, WYOMING, AS APPEARS ON THIS PLAT, IS MADE WITH THE FREE CONSENT, AND IN ACCORDANCE WITH THE DESIRES OF THE UNDERSIGNED OWNERS AND PROPRIETORS, AND THAT THIS IS A CORRECT PLAT OF THE AREA AS IT IS DIVIDED IN LOTS, BLOCKS, STREETS AND EASEMENTS, AND THAT THE UNDERSIGNED OWNERS AND PROPRIETORS OF THE LAND SHOWN AND DESCRIBED ON THIS PLAT DO HEREBY DEDICATE TO THE PUBLIC FOR PERPETUAL PUBLIC USE ALL STREETS, ALLEYS, EASEMENTS AND OTHER LANDS WITHIN THE BOUNDARY LINES OF THE PLAT AS INDICATED AND NOT ALREADY OTHERWISE DEDICATED FOR PUBLIC USE. UTILITY EASEMENTS AS DESIGNATED ON THIS PLAT ARE HEREBY DEDICATED TO THE PUBLIC FOR PERPETUAL PUBLIC USE FOR INSTALLING, PREPARING, REPLACING AND MAINTAINING WATER LINES, SEWERS, GAS LINES, ELECTRICAL LINES, TELEPHONE LINES, CABLE TV LINES AND OTHER FORMS AND TYPES OF PUBLIC UTILITIES NOW OR HEREAFTER GENERALLY UTILIZED BY THE PUBLIC. ALL RIGHTS UNDER AND BY VIRTUE OF THE HOMESTEAD EXEMPTION LAWS OF THE STATE OF WYOMING ARE HEREBY WAIVED AND RELEASED.

EXECUTED THIS \_\_\_\_ DAY OF \_\_\_\_\_ A.D., 20\_\_\_\_ BY:

TONY WILLE, OWNER

STATE OF WYOMING)  
CAMPBELL COUNTY)

THE FOREGOING INSTRUMENT WAS ACKNOWLEDGED BEFORE ME THIS \_\_\_\_ DAY OF \_\_\_\_\_ A.D., 20\_\_\_\_ BY TONY WILLE, OWNER, AS A FREE AND VOLUNTARY ACT AND DEED. WITNESS MY HAND AND OFFICIAL SEAL.

NOTARY PUBLIC

MY COMMISSION EXPIRES: \_\_\_\_\_

## CERTIFICATE OF APPROVAL BY THE CAMPBELL COUNTY PLANNING COMMISSION, CAMPBELL COUNTY, WYOMING

APPROVED BY THE CAMPBELL COUNTY PLANNING COMMISSION THIS \_\_\_\_ DAY OF \_\_\_\_\_ A.D., 20\_\_\_\_

CHAIRMAN

ATTEST:

CLERK OF THE PLANNING COMMISSION

## CERTIFICATE OF APPROVAL BY THE BOARD OF COUNTY COMMISSIONERS, CAMPBELL COUNTY, WYOMING

APPROVED FOR FILING BY THE UNDERSIGNED BOARD OF COUNTY COMMISSIONERS IN AND FOR THE COUNTY OF CAMPBELL, STATE OF WYOMING THIS \_\_\_\_ DAY OF \_\_\_\_\_ A.D., 20\_\_\_\_

CHAIRMAN OF BOARD

MEMBER

MEMBER

MEMBER

MEMBER

CLERK OF BOARD

## CERTIFICATE OF APPROVAL BY THE CITY COUNCIL OF THE CITY OF GILLETTE, WYOMING

APPROVED BY THE CITY COUNCIL OF THE CITY OF GILLETTE, WYOMING THIS \_\_\_\_ DAY OF \_\_\_\_\_ A.D., 20\_\_\_\_

MAYOR

CITY CLERK

## CERTIFICATE OF APPROVAL BY THE CITY OF GILLETTE PLANNING COMMISSION

APPROVED BY THE CITY OF GILLETTE PLANNING COMMISSION THIS \_\_\_\_ DAY OF \_\_\_\_\_ A.D., 20\_\_\_\_

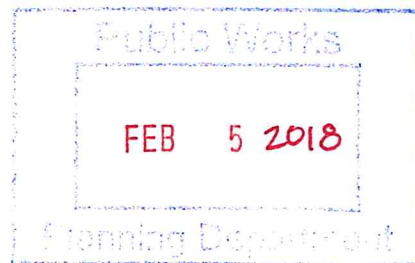
CHAIRMAN

SECRETARY

## CERTIFICATE OF REVIEW OF THE CITY ENGINEER

DATA ON THIS PLAT REVIEWED THIS \_\_\_\_ DAY OF \_\_\_\_\_ A.D., 20\_\_\_\_ BY THE CITY ENGINEER OF GILLETTE, WYOMING.

CITY ENGINEER



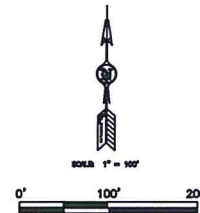
## CERTIFICATE FOR RECORDING BY THE COUNTY CLERK AND RECORDER

THIS PLAT WAS FILED FOR RECORD IN THE OFFICE OF THE CLERK AND RECORDER AT \_\_\_\_ O'CLOCK \_\_\_\_ M., THIS \_\_\_\_ DAY OF \_\_\_\_\_ 20\_\_\_\_, AND IS DULY RECORDED IN BOOK NUMBER \_\_\_\_ PAGE NUMBER \_\_\_\_

COUNTY CLERK

# ROCKY BUTTE INDUSTRIAL PARK

LOCATED IN THE W1/2SW1/4 SECTION 19, T49N, R71W, OF THE 6TH P.M., CAMPBELL COUNTY, WYOMING



- NO CENTRAL WATER SUPPLY SYSTEM
- NO PUBLIC SEWER SYSTEMS
- NO PUBLIC MAINTENANCE OF STREETS OR ROADS
- THE SURFACE STATE OF THE LAND TO BE SUBDIVIDED IS SUBJECT TO FULL AND EFFECTIVE DEVELOPMENT OF THE MINERAL ESTATE

## LEGEND

- FOUND BARE REBAR
- FOUND SHEARED ROW MONUMENT
- SECTION CORNER CALCULATED POSITION FALLS IN CATTLEGUARD
- FOUND QUARTER CORNER ALUMINUM CAP (LS 12376)
- FOUND WITNESS CORNER BRASS CAP (LS 538)
- SET 2" # ALUMINUM CAP (PLS #15542)
- WC WITNESS CORNER
- BOUNDARY
- EASEMENT
- SECTION LINE

## SUBDIVISION SUMMARY

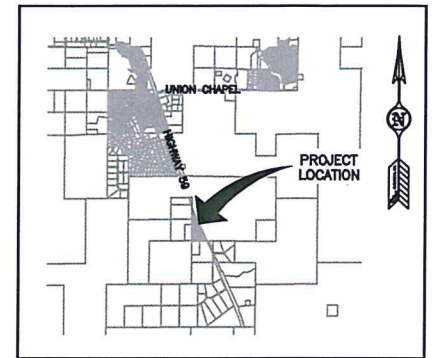
TOTAL AREA: 19.83 ACRES  
TOTAL LOTS: 2 LOTS  
ZONING: I-1  
FLOOD PLAIN DESIGNATION ZONE X

## BENCHMARK

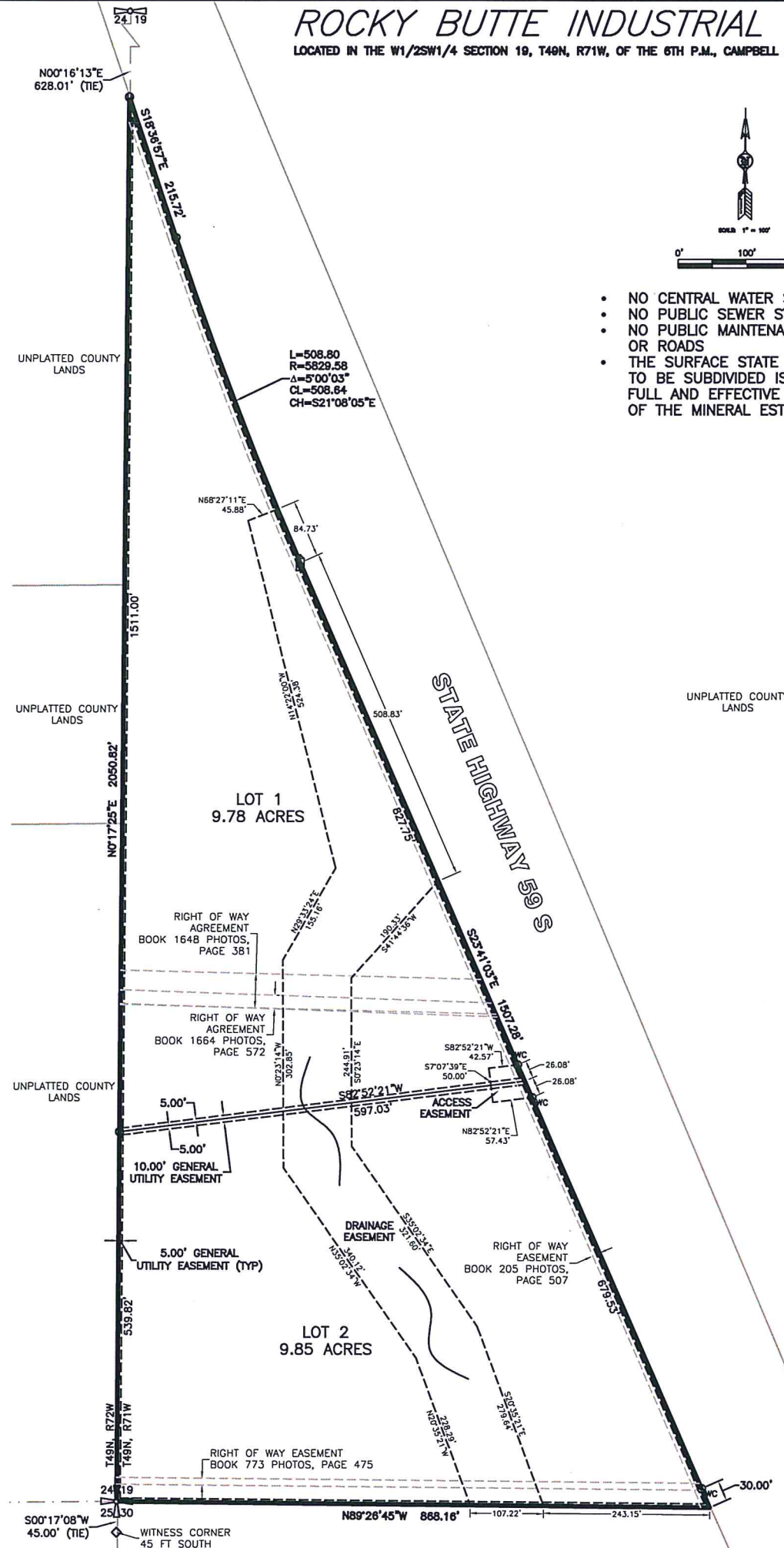
BASED ON CITY OF GILLETTE VERTICAL CONTROL MONUMENT #82 ELEVATION=4665.44

## BASIS OF BEARING

THE CITY OF GILLETTE HORIZONTAL CONTROL NETWORK:  
\*\*\*ALL MEASURED DISTANCES ARE GRID. FOR CONVERSION TO SURFACE, MULTIPLY BY 1.00028964.  
\*\*\*ALL AREAS ARE CALCULATED AT SURFACE.



VICINITY MAP



## LEGAL DESCRIPTION

A PARCEL LOCATED IN THE W1/2SW1/4 OF SECTION 19, T49N, R71W OF THE 6TH P.M., CAMPBELL COUNTY, WYOMING, AS RECORDED IN BOOK 3078 OF PHOTOS, PAGE 690 OF THE CAMPBELL COUNTY CLERK'S RECORDS, BEING MORE PARTICULARLY DESCRIBED AS FOLLOWS:  
COMMENCING AT THE SOUTHWEST CORNER OF SAID SECTION 19 AND BEING THE POINT OF BEGINNING, FROM WHICH A WITNESS CORNER LIES S00°17'08"W, 45.00 FEET, MONUMENTED BY A 1982 BRASS CAP STAMPED LS 538;  
THENCE ALONG THE WEST SECTION LINE OF SAID SECTION 19, N00°17'25"E, 2050.82 FEET TO A POINT ON THE WESTERLY RIGHT OF WAY OF WYOMING STATE HIGHWAY 59, MONUMENTED BY A BARE REBAR, FROM WHICH THE WEST QUARTER CORNER OF SAID SECTION 19 LIES N00°16'13"E, 628.01 FEET, MONUMENTED BY AN ALUMINUM CAP STAMPED LS 12376;  
THENCE ALONG SAID WESTERLY RIGHT OF WAY, S18°38'57"E, 215.72 FEET TO A NON-TANGENT CIRCULAR CURVE CONCAVE TO THE EAST, MONUMENTED BY A BARE REBAR;  
THENCE CONTINUING ALONG SAID WESTERLY RIGHT OF WAY, THROUGH SAID CURVE HAVING A DELTA ANGLE OF 5°00'03", A RADIUS OF 5829.58 FEET, AN ARC LENGTH OF 508.83 FEET, A CHORD BEARING OF S21°08'05"E, AND A CHORD LENGTH OF 508.64 FEET, MONUMENTED BY SHEARED OFF WOOD CONCRETE MONUMENT;  
THENCE CONTINUING ALONG SAID WESTERLY RIGHT OF WAY, S23°41'03"E, 1507.28 FEET TO THE SOUTHEAST CORNER OF SAID PARCEL, ALSO BEING A POINT ON THE SOUTH LINE OF AFOREMENTIONED SECTION 19, FROM WHICH A WITNESS CORNER LIES N23°41'03"W, 30.00 FEET, MONUMENTED BY AN ALUMINUM CAP STAMPED PLS 15542;  
THENCE ALONG SAID SOUTH LINE, N89°26'45"W, 868.16 FEET TO THE POINT OF BEGINNING.

## SURVEYOR'S CERTIFICATE

I, SHEILA M. SLOCUM, DO HEREBY CERTIFY THAT I AM A REGISTERED LAND SURVEYOR, LICENSED UNDER THE LAWS OF THE STATE OF WYOMING, THAT THIS SUBDIVISION PLAT IS A TRUE, CORRECT AND COMPLETE PLAT OF THE ROCKY BUTTE INDUSTRIAL PARK LOCATED IN THE W1/2SW1/4 SECTION 19, T49N, R71W, OF THE 6TH P.M., CAMPBELL COUNTY, WYOMING, AS LAID OUT, PLATTED, DEDICATED AND SHOWN HEREON, THAT SUCH PLAT WAS MADE FROM AN ACTUAL SURVEY OF SAID PROPERTY BY ME AND UNDER MY SUPERVISION.

Prepared for:

TONY WILLE  
P.O. BOX 2796  
GILLETTE, WY 82717  
307-257-7039



COPYRIGHT © ALL RIGHTS RESERVED BY PCA ENGINEERING, INC.

Drawn by: SS Design by: SS Reviewed by: SS

Revision Date Revision Description

PCA Project Number: 173820.00

Plot Date: Feb 04, 2018 - 11:25am

G:\PROJECTS\17382000 Rocky Butte Subdivision\DesDwg

MainP.dwg Layout: Plot 1

X-Ref: ...

ROCKY BUTTE INDUSTRIAL PARK  
LOCATED IN THE W1/2SW1/4 SECTION 19, T49N, R71W, OF THE 6TH P.M., CAMPBELL COUNTY, WYOMING

FINAL PLAT

SHEET 1 OF 1