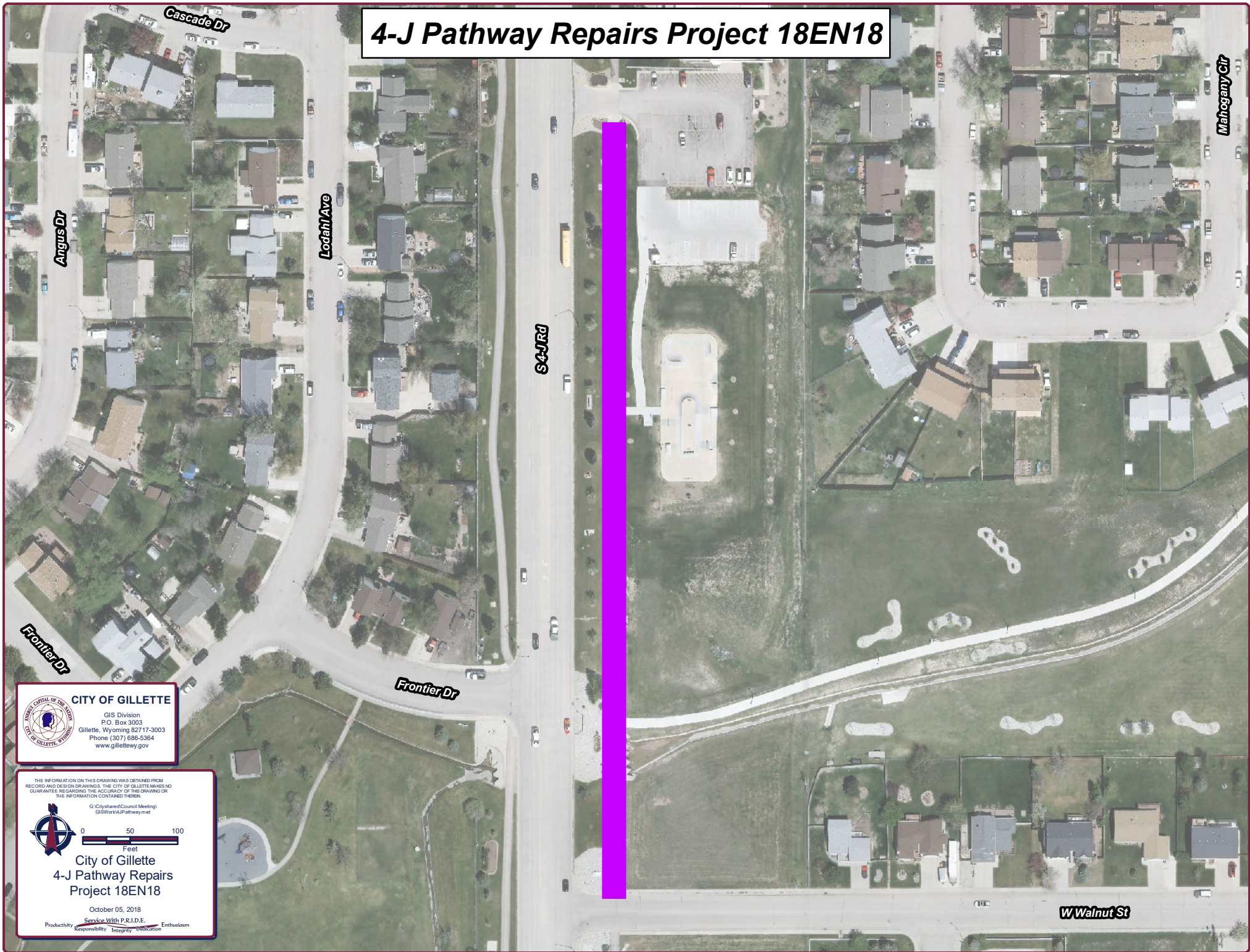


4-J Pathway Repairs Project 18EN18



CITY OF GILLETTE

GIS Division
P.O. Box 3003
Gillette, Wyoming 82717-3003
Phone (307) 686-5364
www.gillettewy.gov



City of Gillette 4-J Pathway Repairs Project 18EN18

October 05, 2018

Service With P.R.I.D.E.
Productivity Responsibility Integrity Dedication Enthusiasm