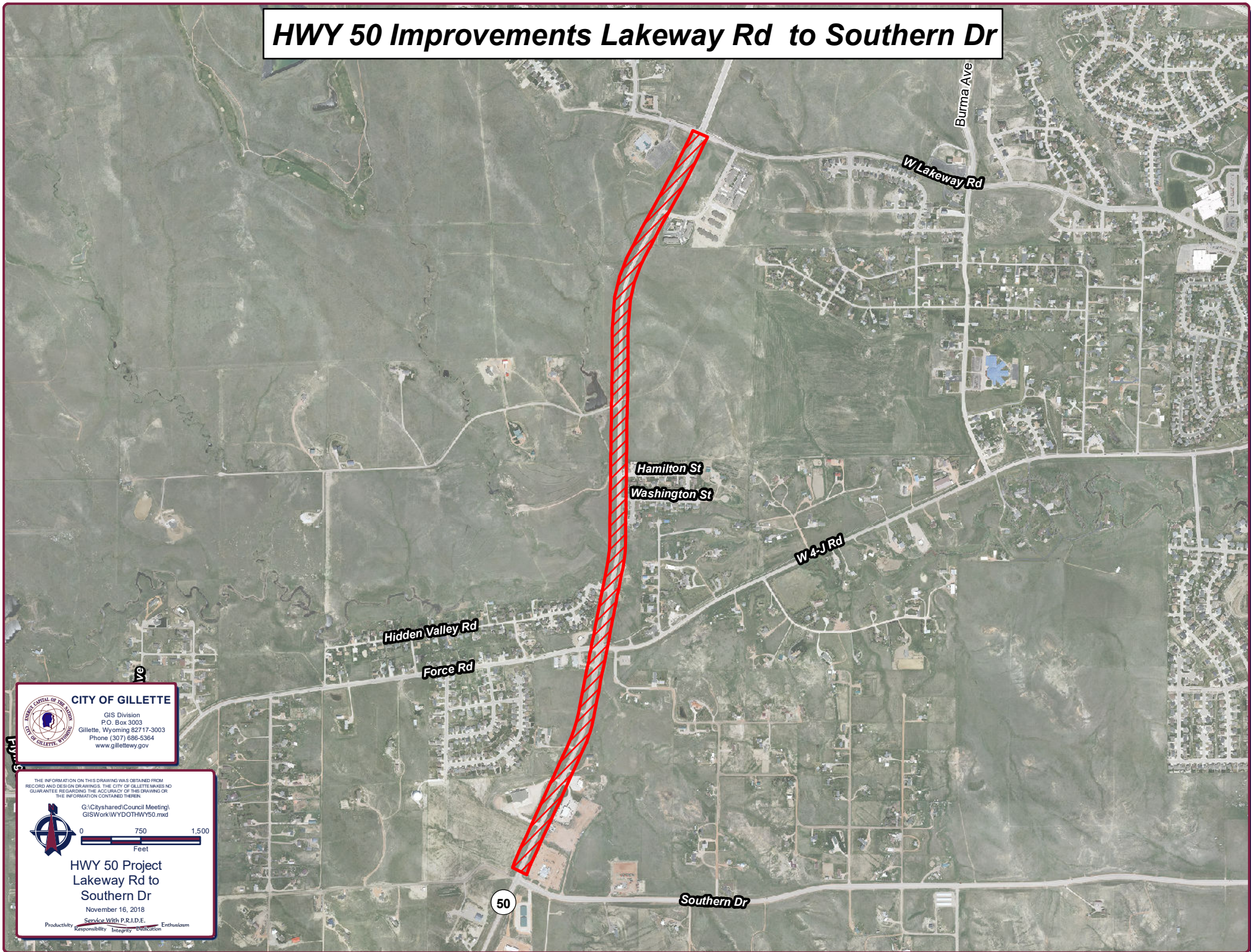


HWY 50 Improvements Lakeway Rd to Southern Dr



CITY OF GILLETTE
GIS Division
P.O. Box 3003
Gillette, Wyoming 82717-3003
Phone (307) 686-5364
www.gillettewy.gov

THE INFORMATION ON THIS DRAWING WAS OBTAINED FROM
RECORD AND DESIGN DRAWINGS. THE CITY OF GILLETTE MAKES NO
GUARANTEE REGARDING THE ACCURACY OF THIS DRAWING OR
THE INFORMATION CONTAINED THEREIN.

G:\Cityshared\Council Meeting\GISWork\WYDOT\HWY50.mxd

0 750 1,500
Feet

**HWY 50 Project
Lakeway Rd to
Southern Dr**

November 16, 2018

Service With P.R.I.D.E.
Productivity Responsibility Integrity Dedication