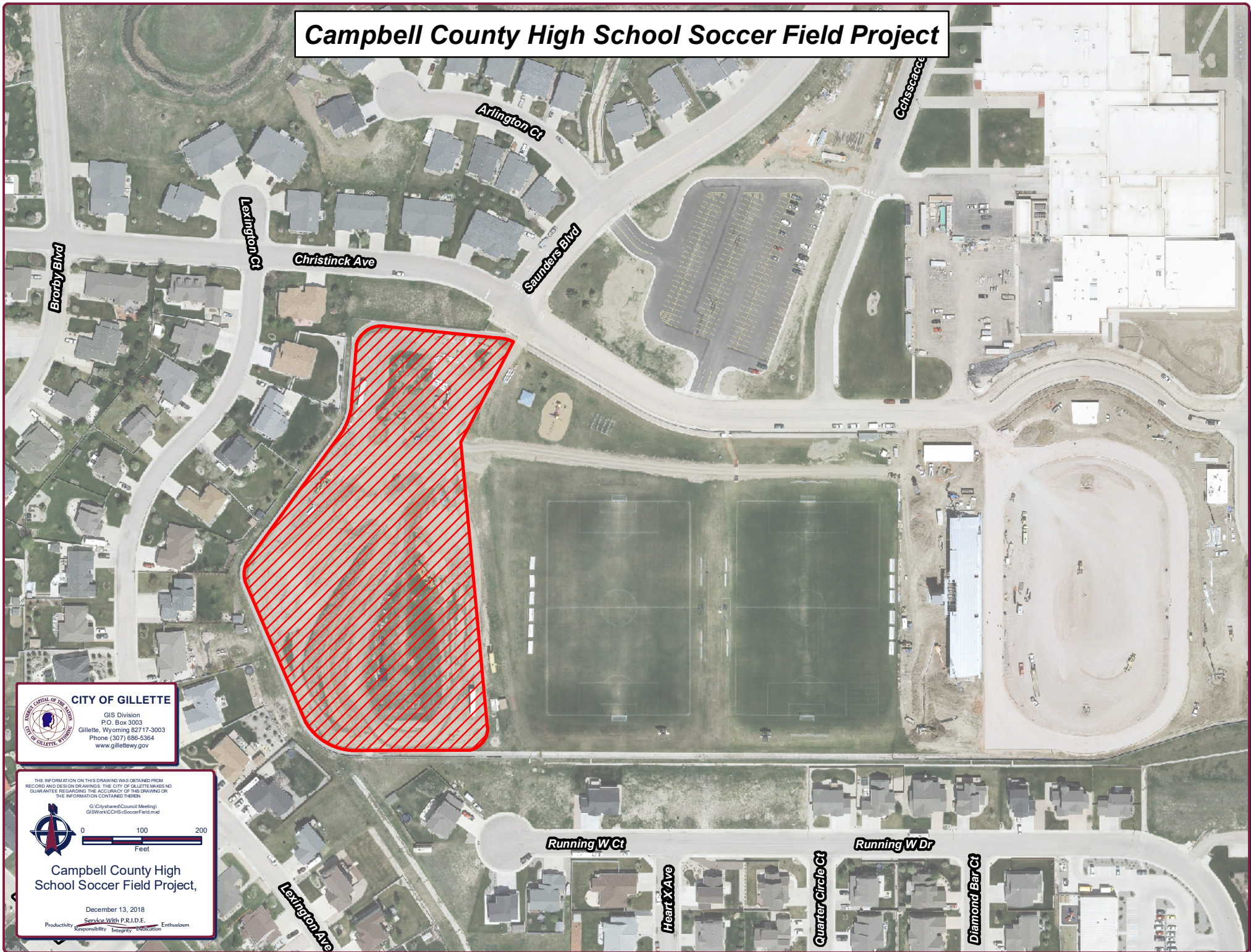


Campbell County High School Soccer Field Project



CITY OF GILLETTE

GIS Division
P.O. Box 3003
Gillette, Wyoming 82717-3003
Phone (307) 686-5364
www.gillettewy.gov



0 100 200
Feet

Campbell County High
School Soccer Field Project,

December 13, 2018

Service With P.R.I.D.E.
Productivity Responsibility Integrity Dedication Enthusiasm