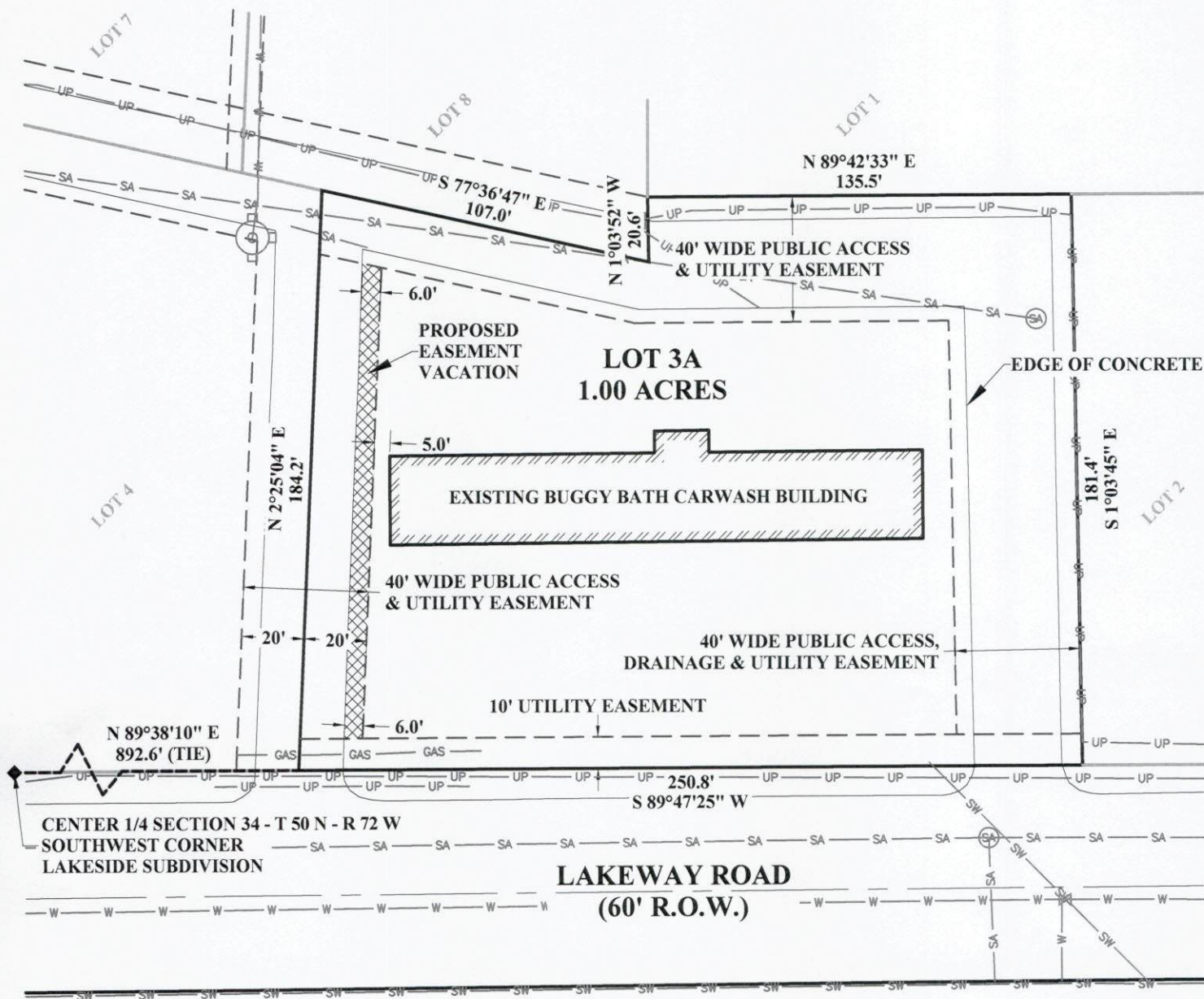
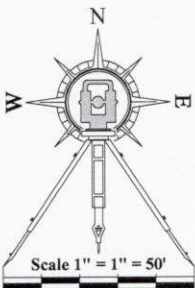


RECORD OF SURVEY
LOT 3A, LAKESIDE SUBDIVISION
CITY OF GILLETTE,
CAMPBELL COUNTY, WYOMING



BASIS OF BEARING:
GPS GRID BEARINGS

CERTIFICATE OF SURVEYOR:
Land Surveying Incorporated by Raymond A. Scott, a registered land surveyor in the state of Wyoming, hereby certifies that this Record of Survey was made from data collected during an actual survey performed by Larissa Bulau & Peter Angelos on January 16, 2019 and are true and correct to the best of my knowledge and belief.



LEGEND

GAS LINE
BURIED ELECTRIC
SANITARY SEWER
STORM WATER SEWER
WATER LINE

— GAS —
— UP —
— SA —
— SW —
— W —

ALL COURSES ARE MEASURED UNLESS NOTED

Prepared For:
HALL & CO. LLC
48 INDIAN PAINTBRUSH ROAD
SHERIDAN, WY 82801

Prepared By:
LAND SURVEYING INCORPORATED
209 N. WORKS AVENUE
GILLETTE, WY 82716



Location:
RECORD OF SURVEY
LOT 3A, LAKESIDE SUBDIVISION,
607 LAKEWAY ROAD,
CITY OF GILLETTE,
CAMPBELL COUNTY, WYOMING

| | | |
|---------------------|--------------------------|---------------------|
| JOB #19-004A | FILE: 19004A_PLAT.DWG | LSI - GILLETTE OPUS |
| CREATED BY: CLEPINE | CREATION DATE: 1/16/2019 | |
| REVIEWER: RAS | APPROVED DATE: 2/7/2019 | |
| REVISION HISTORY | | |