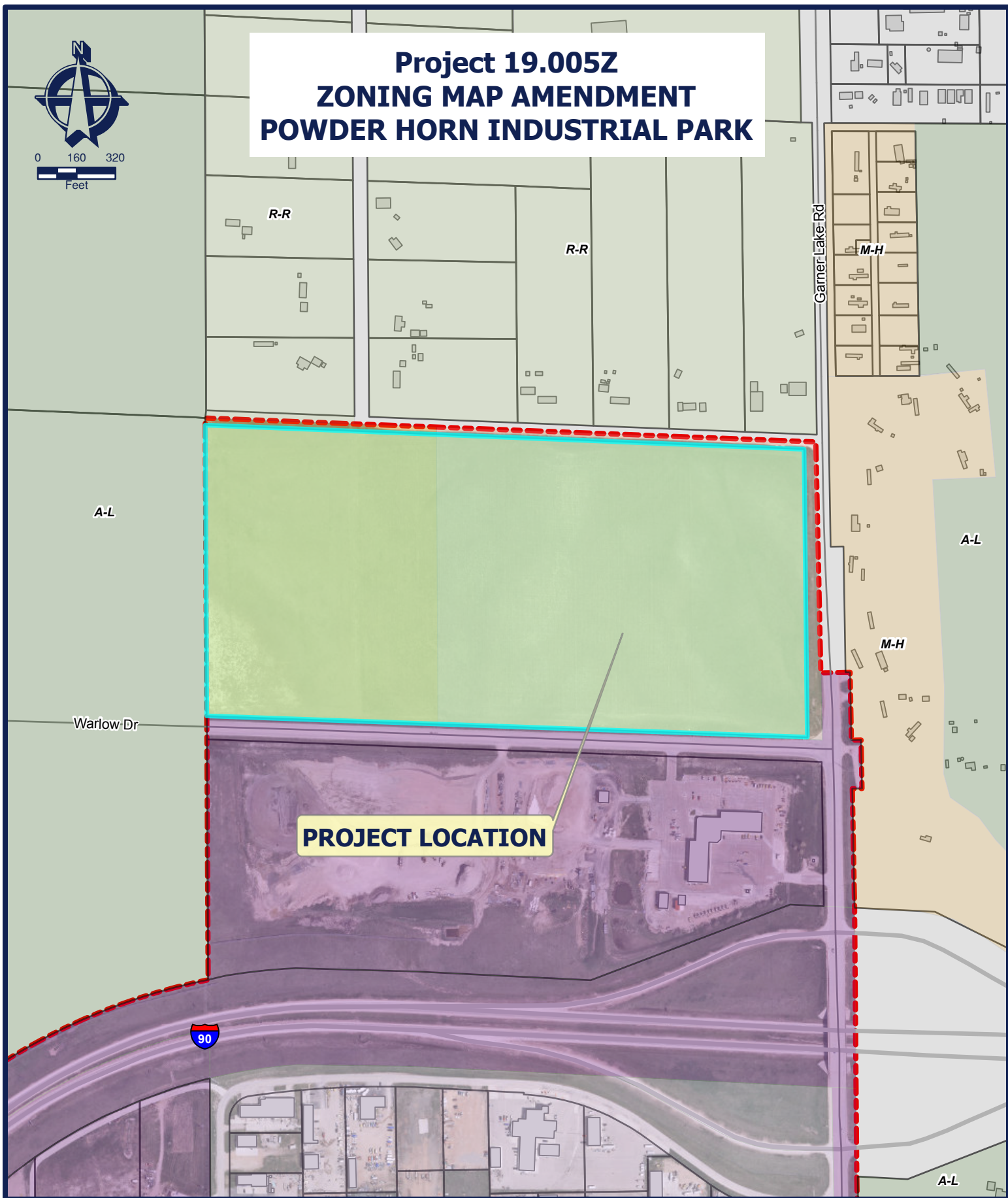




# Project 19.005Z ZONING MAP AMENDMENT POWDER HORN INDUSTRIAL PARK



**PROJECT LOCATION**



## CITY OF GILLETTE

GIS Division  
P.O. Box 3003  
Gillette, Wyoming 82717-3003  
Phone (307) 686-5364  
[www.gillettewy.gov](http://www.gillettewy.gov)

2/19/2019 11:25 AM

THE INFORMATION ON THIS DRAWING WAS OBTAINED FROM  
RECORD AND DESIGN DRAWINGS. THE CITY OF GILLETTE MAKES NO  
GUARANTEE REGARDING THE ACCURACY OF THIS DRAWING OR  
THE INFORMATION CONTAINED THEREIN.

Service With P.R.I.D.E.  
Productivity Responsibility Integrity Dedication Enthusiasm