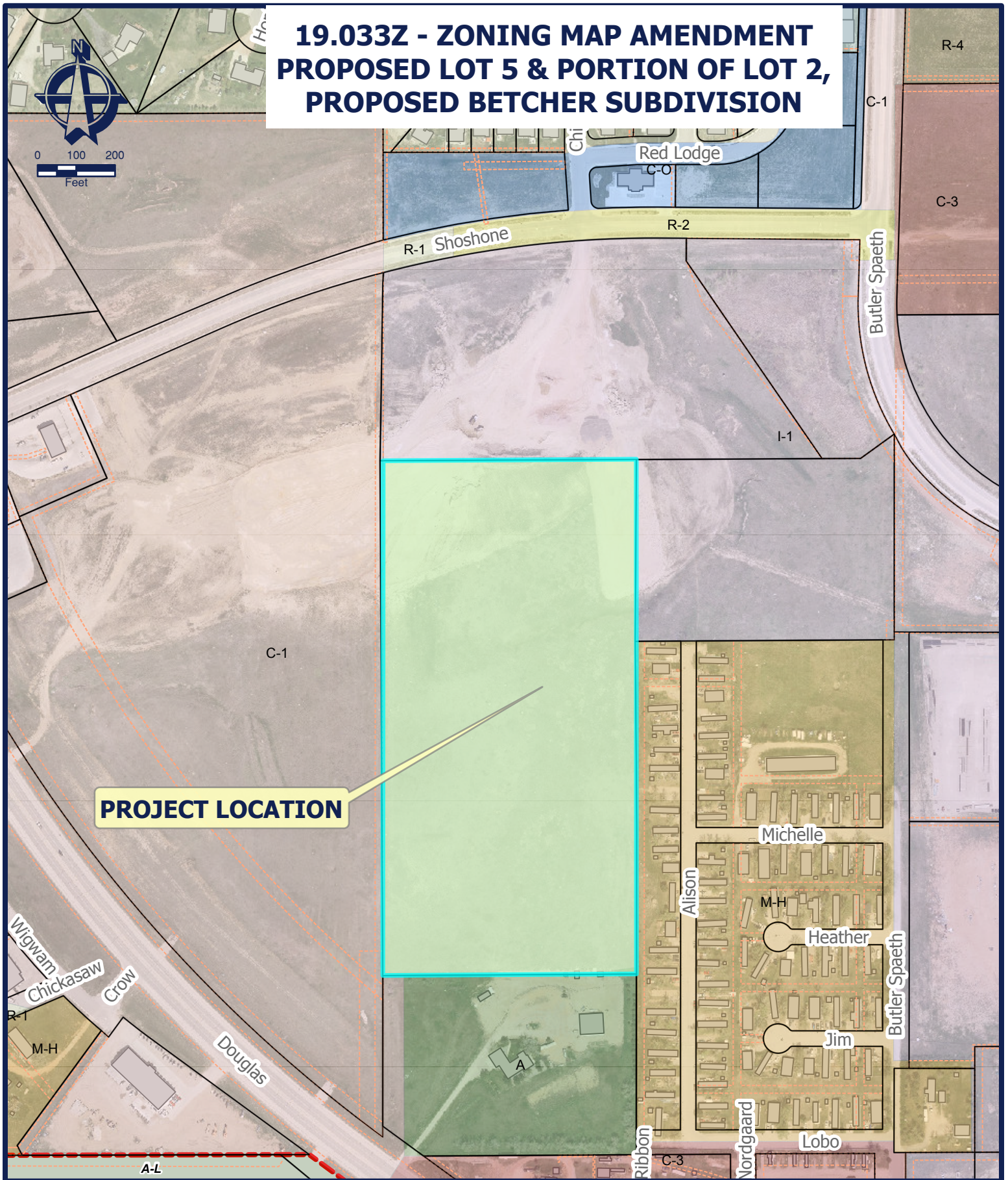


19.033Z - ZONING MAP AMENDMENT PROPOSED LOT 5 & PORTION OF LOT 2, PROPOSED BETCHER SUBDIVISION



PROJECT LOCATION



CITY OF GILLETTE

GIS Division
P.O. Box 3003
Gillette, Wyoming 82717-3003
Phone (307) 686-5364
www.gillettewy.gov

EXHIBIT "A"

9/16/2019 3:35 PM

THE INFORMATION ON THIS DRAWING WAS OBTAINED FROM
RECORD AND DESIGN DRAWINGS. THE CITY OF GILLETTE MAKES NO
GUARANTEE REGARDING THE ACCURACY OF THIS DRAWING OR
THE INFORMATION CONTAINED THEREIN.

Productivity **Service With P.R.I.D.E.** Enthusiasm
Responsibility Integrity Dedication