

DEDICATION

Know all men by these presents that the undersigned GILLETTE LAND III, LLC, being the owner, proprietor, or parties of interest in the land shown on this plat, do hereby certify,

The above and foregoing FINAL PUD PLAT, A RESUBDIVISION OF LOTS 17-28, BLOCK 3, OF THE FINAL PUD PLAT, VILLAS AT TENTH HOLE ESTATES, PHASE I TO THE CITY OF GILLETTE being more particularly described as follows:

TO BE KNOWN AS:
FINAL PUD PLAT, Lots 17A, 18A, 19A, 20A, 21A, 22A, 23A AND 24A, BLOCK 3, OF THE FINAL PUD PLAT, VILLAS AT TENTH HOLE ESTATES, PHASE I, CITY OF GILLETTE

Said tract of land contains 1.346 acres, more or less, subject to all rights, restrictions and/or easements of sight and record, and as appears on this plat, is made with the free consent, and in accordance with the desires of the undersigned owners and proprietors, and that this is a correct plat of the area as it is divided in lots, blocks, streets and easements, and

That the undersigned owners and proprietors of the land shown and described on this plat do hereby dedicate to the City of Gillette for perpetual public use all streets, alleys, easements and other lands within the boundary lines of the plat as indicated and not already otherwise dedicated for public use. Utility easements as designated on this plat are hereby dedicated to the City of Gillette for perpetual public use for installing, repairing, replacing and maintaining water lines, sewers, gas lines, electrical lines, telephone lines, cable TV lines and the forms and types of public utilities now or hereafter generally utilized by the public. Drainage Easements, as designated on this plat, are hereby dedicated to the City of Gillette and its licensees for public use, to accommodate the flow or storage of storm water and shall be kept free of all fences, structures or other impediments.

All rights under and by virtue of the homestead exemption laws of the State of Wyoming are hereby waived and released.

Executed this _____ day of _____, A.D., 20__

Owner: GILLETTE LAND III, LLC

Signed by _____
as _____ for GILLETTE LAND III, LLC

FINAL PUD PLAT

A RESUBDIVISION OF LOTS 17-28,BLOCK 3
OF THE FINAL PUD PLAT
VILLAS AT TENTH HOLE ESTATES
PHASE I
TO THE
CITY OF GILLETTE, WYOMING

STATE OF _____)
) ss
COUNTY OF _____)
The foregoing instrument was acknowledged before me this _____
day of _____, A.D., 20____, by _____
as _____ for GILLETTE LAND III, LLC as a free
and voluntary act and deed.

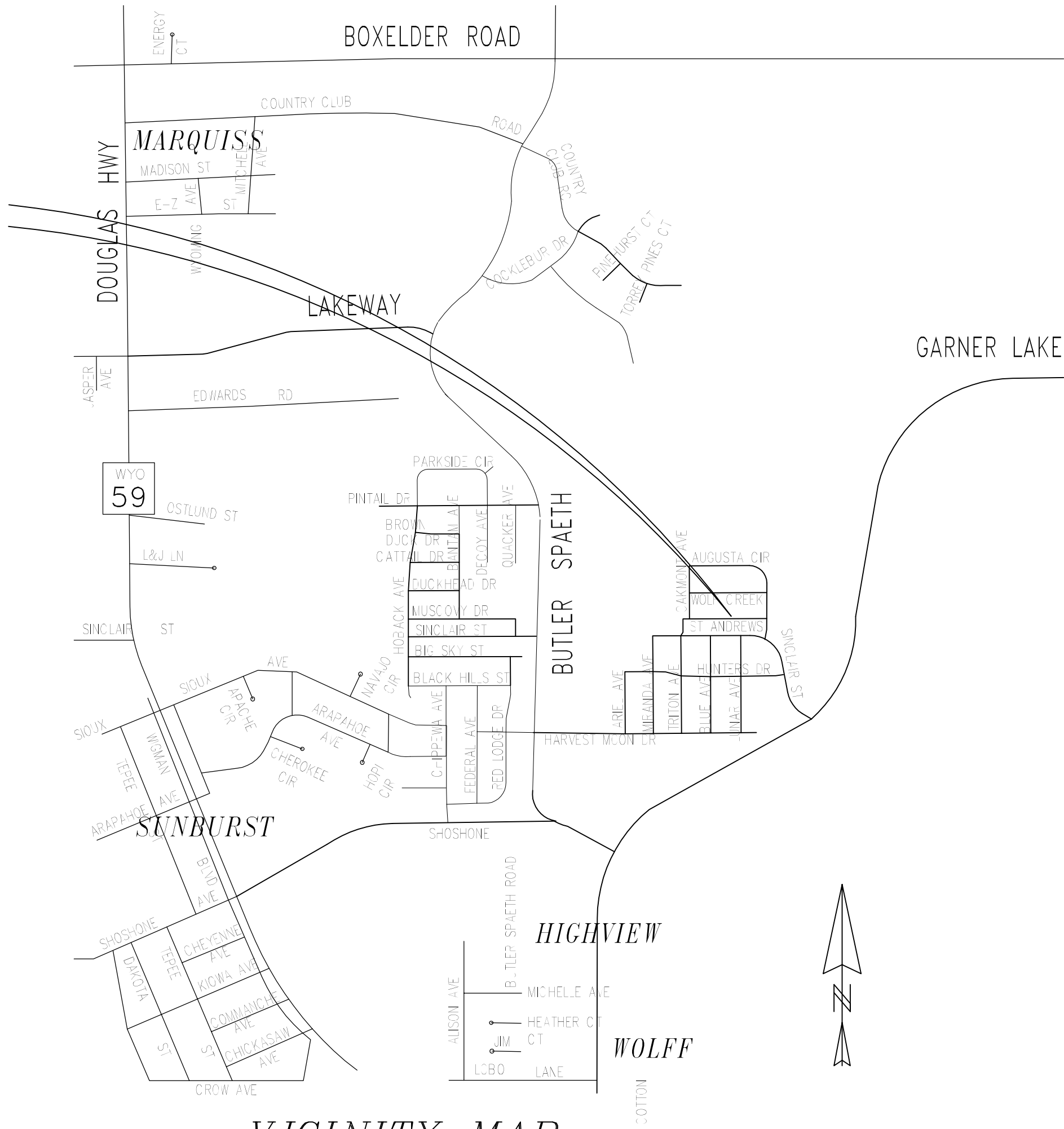
Witness my hand and official seal.

Notary Public
My Commission Expires _____

DECLARATION VACATING PREVIOUS PLATTING

THIS PLAT IS THE RESUBDIVISION OF
Lots 17-28, Block 3, VILLAS AT TENTH
HOLE ESTATES, BOOK 11 OF PLATS, PAGE
68 OF THE RECORDS OF THE CAMPBELL
COUNTY CLERK. ALL EARLIER PLAT OR
PORTIONS THEREOF, ENCOMPASSED BY THE
BOUNDARIES OF THIS PLAT ARE HEREBY
VACATED.

PROJECT
SITE



VICINITY MAP

NOT TO SCALE

APPROVALS

Data on this plat reviewed this _____ day of _____,
20____A.D., by the City Engineer of Gillette, Wyoming.

City Engineer _____

This plat approved by the City of Gillette Planning Commission
this _____ day of _____, 20____, A.D.

Chairman _____ Secretary _____

Approved by the City Council of the City of Gillette, Wyoming
this _____ day of _____, 20____, A.D.

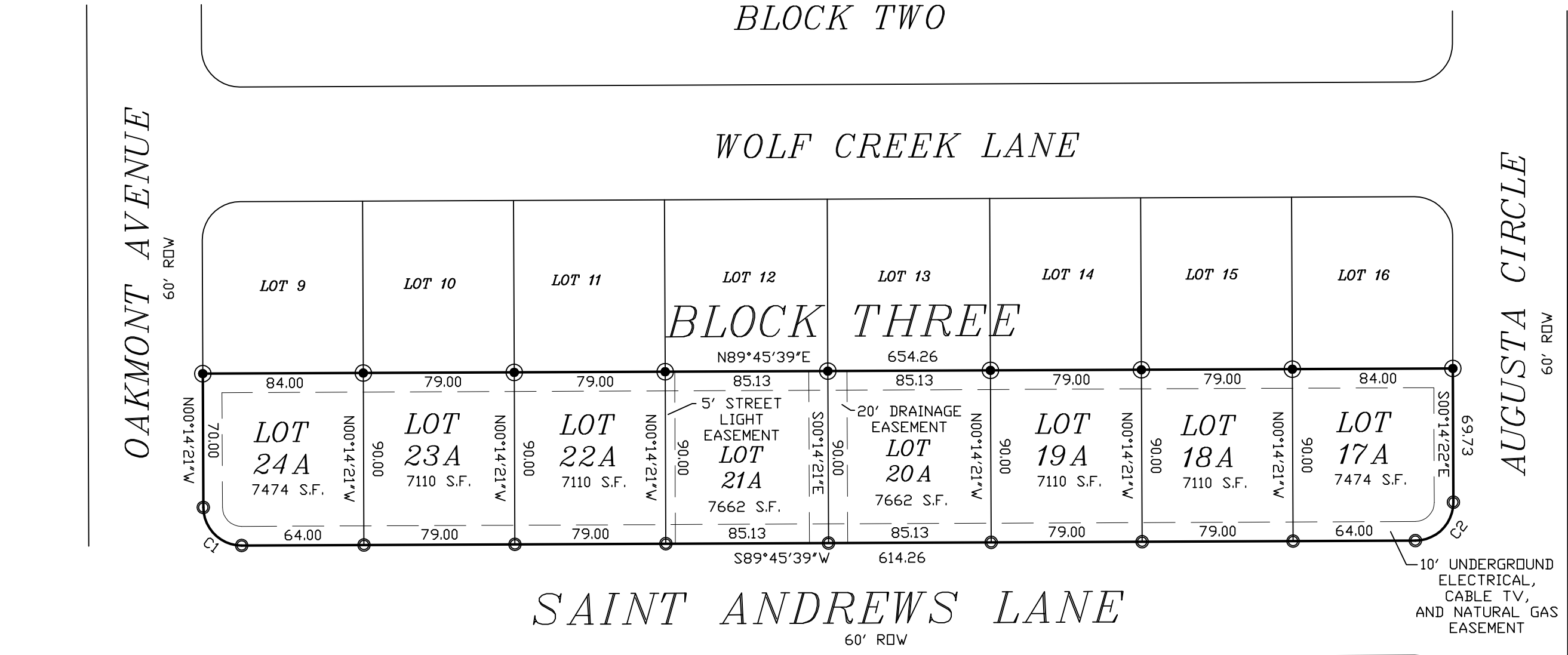
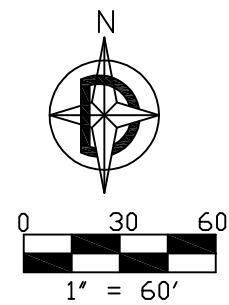
Mayor _____ City Clerk _____

This plat filed for record in the office of the County Clerk
and Recorder at _____ o'clock __m., _____ of _____
20 _____ A.D, and is duly recorded in Book _____ of Plats,
Page No. _____

County Clerk _____

SURVEYOR'S CERTIFICATE

I, Richard T. Doyle, do hereby certify that I am a registered land surveyor, licensed under the laws of the State of Wyoming, that this plat is a true, correct, and complete plat of FINAL PUD PLAT, A RESUBDIVISION OF LOTS 17-28, BLOCK 3 OF THE FINAL PUD PLAT, VILLAS AT TENTH HOLE ESTATES, PHASE I TO THE CITY OF GILLETTE, WYOMING, as laid out, platted, dedicated and shown hereon, that such plat was made from an accurate survey of said property by me and under my supervision and correctly shows the location and dimensions of the lots, easements, and streets of said subdivision as the same are staked upon the ground in compliance with City of Gillette regulations governing the subdivision of the land.



CURVE TABLE					
CURVE	DELTA	ANGLE	RADIUS	ARC	CHORD
C1	90°00'00"	20.00'	31.42'	28.28'	S45°14'21"E
C2	90°00'00"	20.00'	31.42'	26.71'	N45°45'39"E

SUMMARY
TOTAL LOTS: 8
R.O.W. AREA: N/A
TOTAL AREA: 1.346 AC
ZONING: PUD OVERLAYING R-4

LEGEND

- FOUND 5/8" REBAR WITH SURVEY CAP
- SET 24" LONG 5/8" REBAR WITH ALUMINUM SURVEY CAP MARKED "RLS 2333"

FINAL PUD PLAT

A RESUBDIVISION OF LOTS 17-28,
BLOCK 3 OF THE FINAL PUD PLAT
VILLAS AT TENTH HOLE ESTATES
PHASE I

PREPARED FOR: GILLETTE LAND III, LLC 888 N. LOGAN ST., STE 8GH DENVER, CO 80203	PREPARED BY: DOYLE SURVEYING INC. 801 E. Fourth St. Suite C-8 Gillette, WY 82716 PH: (307) 686-2410
--	--

DATE OF PREPARATION: AUGUST, 2019 SHT 1 OF 1