

EXHIBIT A



CITY OF GILLETTE
ELECTRICAL ENGINEERING
611 N EXCHANGE AVE
GILLETTE, WYOMING 82716
(307) 686-5277



BUFFALO RIDGE ELEMENTARY

General Information

Transfer of fiber ownership will include existing City Vaults F104 & F105

Fiber Transfer Information:	Approx. Distance - 2,302 LF	Number of Vaults - 2
City ROW Lease Information:	Approx. ROW Lease - 2,152 LF	

EXHIBIT A



CITY OF GILLETTE
ELECTRICAL ENGINEERING
611 N EXCHANGE AVE
GILLETTE, WYOMING 82716
(307) 686-5277



HILLCREST ELEMENTARY

General Information

Transfer of fiber ownership will not include any existing City Vaults

Fiber Transfer Information: Approx. Distance - 414 LF
City ROW Lease Information: Approx. ROW Lease - 0 LF

Number of Vaults - 0

EXHIBIT A



CITY OF GILLETTE
ELECTRICAL ENGINEERING
611 N EXCHANGE AVE
GILLETTE, WYOMING 82716
(307) 686-5277



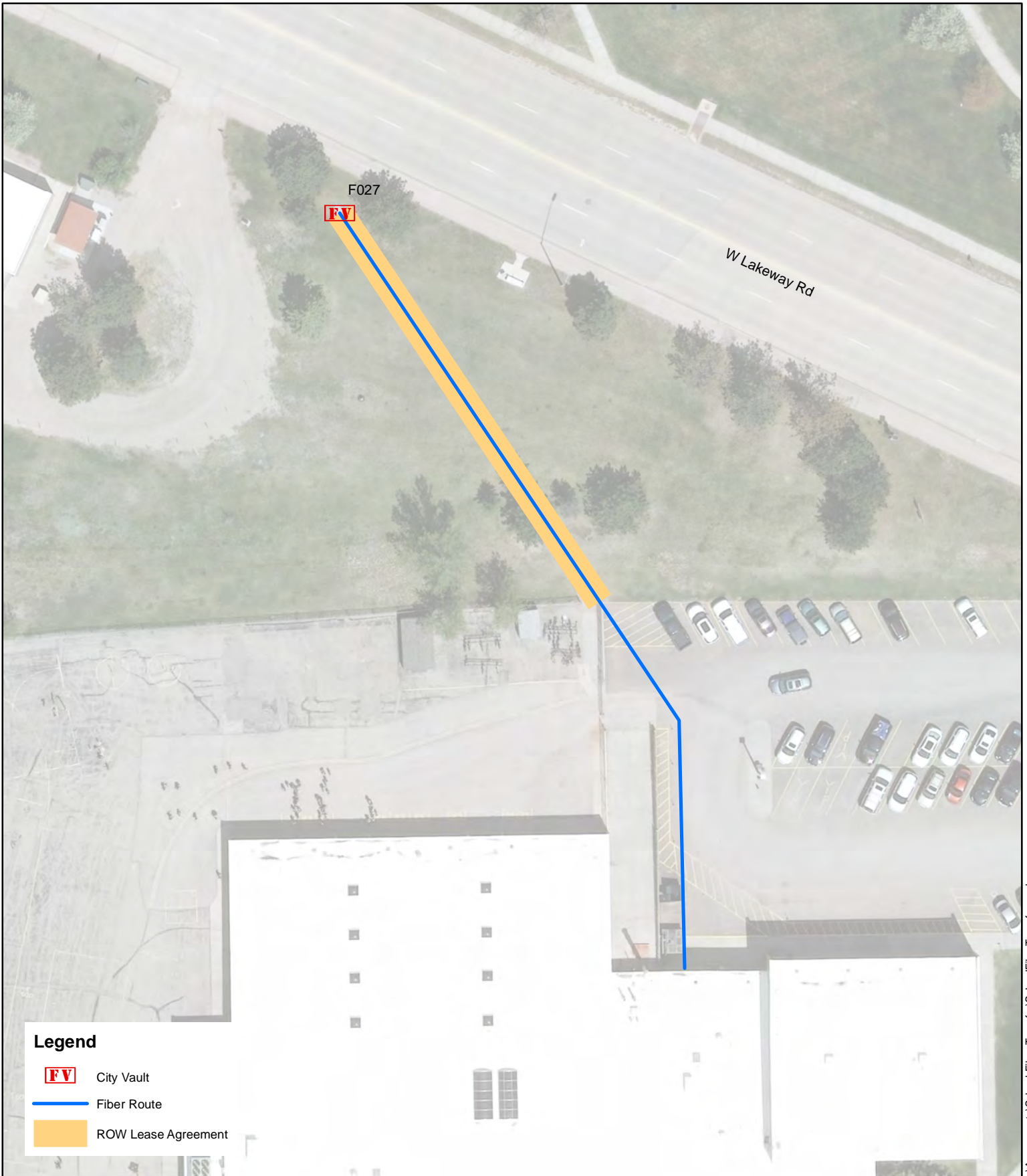
MEADOWLARK ELEMENTARY

General Information

Transfer of fiber ownership will not include any existing City Vaults

Fiber Transfer Information:	Approx. Distance - 148 LF	Number of Vaults - 0
City ROW Lease Information:	Approx. ROW Lease - 0 LF	

EXHIBIT A



CITY OF GILLETTE
ELECTRICAL ENGINEERING
611 N EXCHANGE AVE
GILLETTE, WYOMING 82716
(307) 686-5277



PAINTBRUSH ELEMENTARY

General Information

Transfer of fiber ownership will not include any existing City Vaults

Fiber Transfer Information:	Approx. Distance - 334 LF	Number of Vaults - 0
City ROW Lease Information:	Approx. ROW Lease - 182 LF	

EXHIBIT A



CITY OF GILLETTE
ELECTRICAL ENGINEERING
611 N EXCHANGE AVE
GILLETTE, WYOMING 82716
(307) 686-5277



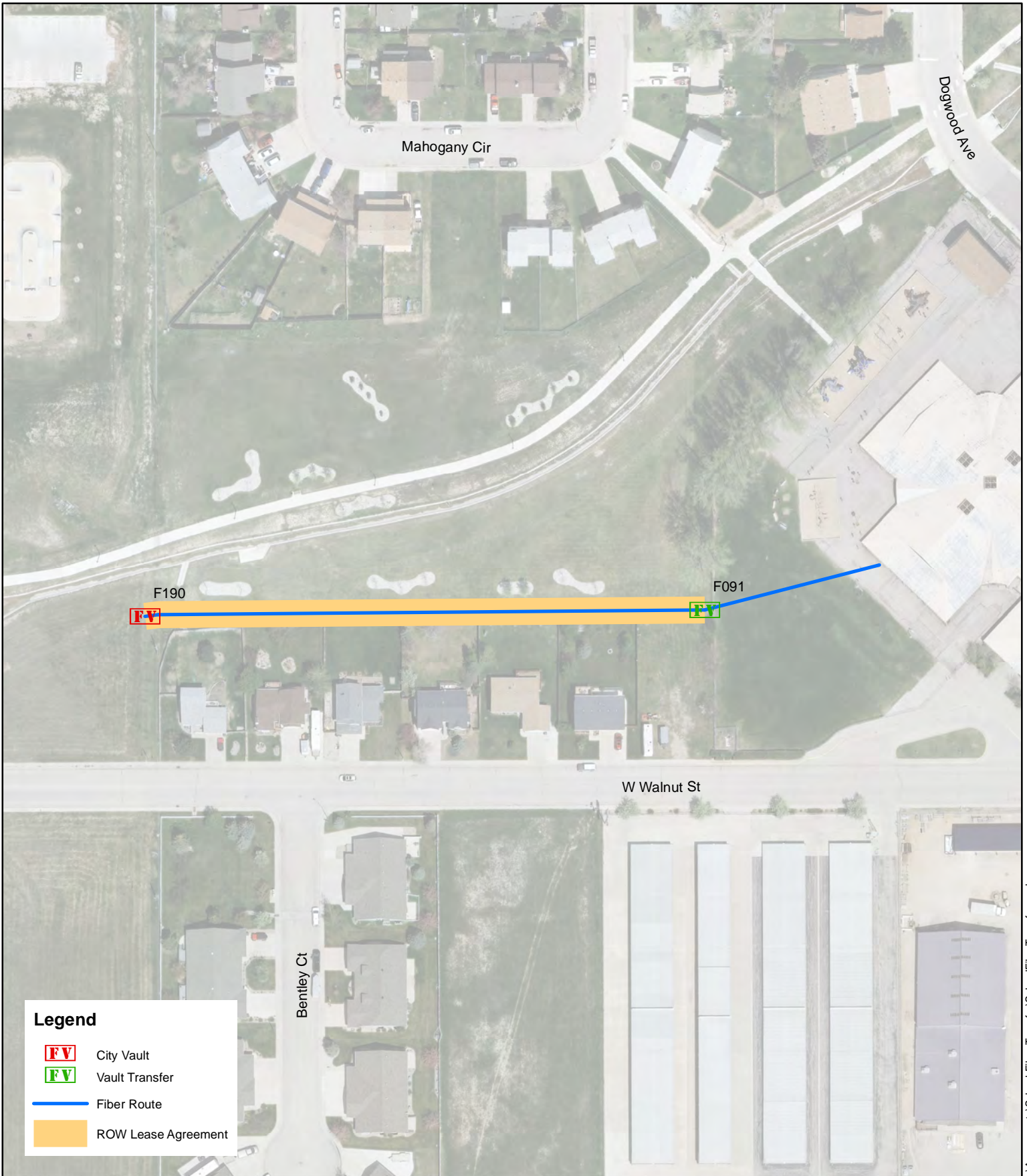
PRONGHORN ELEMENTARY

General Information

Transfer of fiber ownership will include existing City Vault F031

Fiber Transfer Information:	Approx. Distance - 1,841 LF	Number of Vaults - 1
City ROW Lease Information:	Approx. ROW Lease - 1,567 LF	

EXHIBIT A



Legend

FV City Vault

FV Vault Transfer

— Fiber Route

— ROW Lease Agreement



CITY OF GILLETTE
ELECTRICAL ENGINEERING
611 N EXCHANGE AVE
GILLETTE, WYOMING 82716
(307) 686-5277



SUNFLOWER ELEMENTARY

General Information

Transfer of fiber ownership will include existing City Vault F091

Fiber Transfer Information:	Approx. Distance - 720 LF	Number of Vaults - 1
City ROW Lease Information:	Approx. ROW Lease - 545 LF	

EXHIBIT A



FV

City Vault - Proposed

FV

Vault Transfer

Fiber Route

ROW Lease Agreement



CITY OF GILLETTE
 ELECTRICAL ENGINEERING
 611 N EXCHANGE AVE
 GILLETTE, WYOMING 82716
 (307) 686-5277



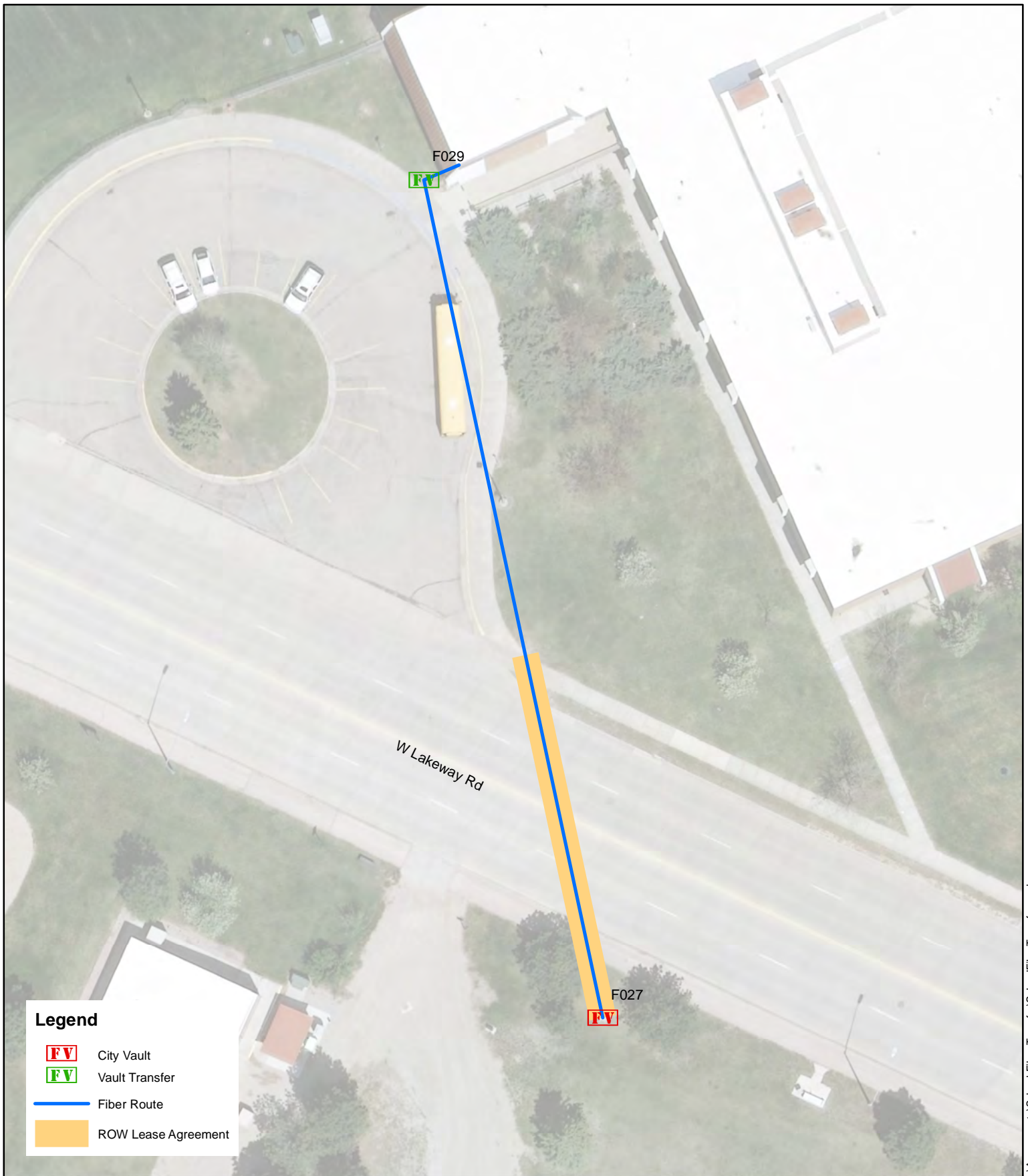
WAGONWHEEL ELEMENTARY

General Information

Transfer of fiber ownership will include existing City Vaults F053 & F054

Fiber Transfer Information:	Approx. Distance - 1,736 LF	Number of Vaults - 2
City ROW Lease Information:	Approx. ROW Lease - 1,503 LF	

EXHIBIT A



CITY OF GILLETTE
ELECTRICAL ENGINEERING
611 N EXCHANGE AVE
GILLETTE, WYOMING 82716
(307) 686-5277

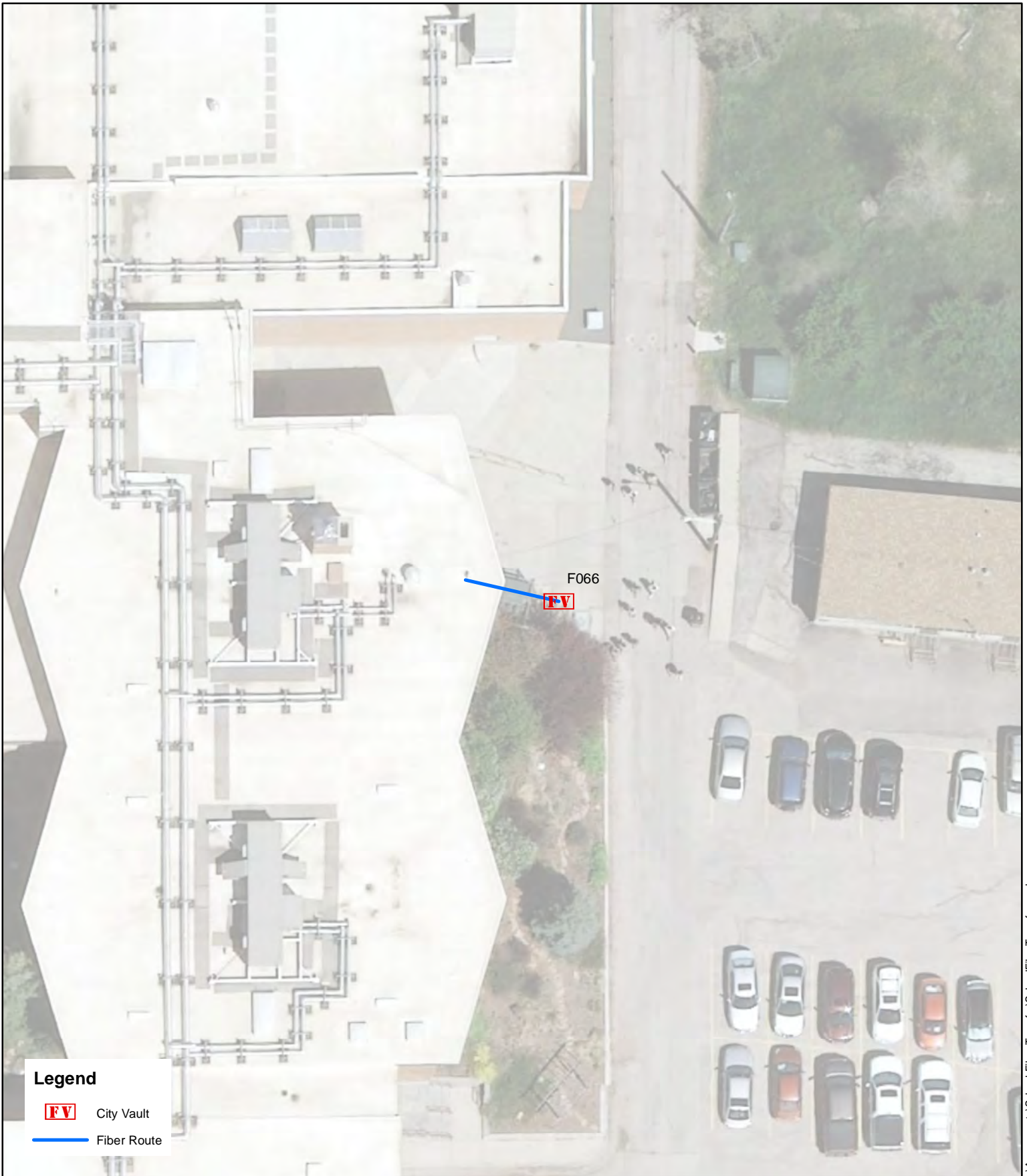


SAGE VALLEY JUNIOR HIGH SCHOOL

General Information

Transfer of fiber ownership will include existing City Vault F029

Fiber Transfer Information:	Approx. Distance - 291 LF	Number of Vaults - 1
City ROW Lease Information:	Approx. ROW Lease - 120 LF	



Legend



City Vault

Fiber Route



CITY OF GILLETTE
ELECTRICAL ENGINEERING
611 N EXCHANGE AVE
GILLETTE, WYOMING 82716
(307) 686-5277



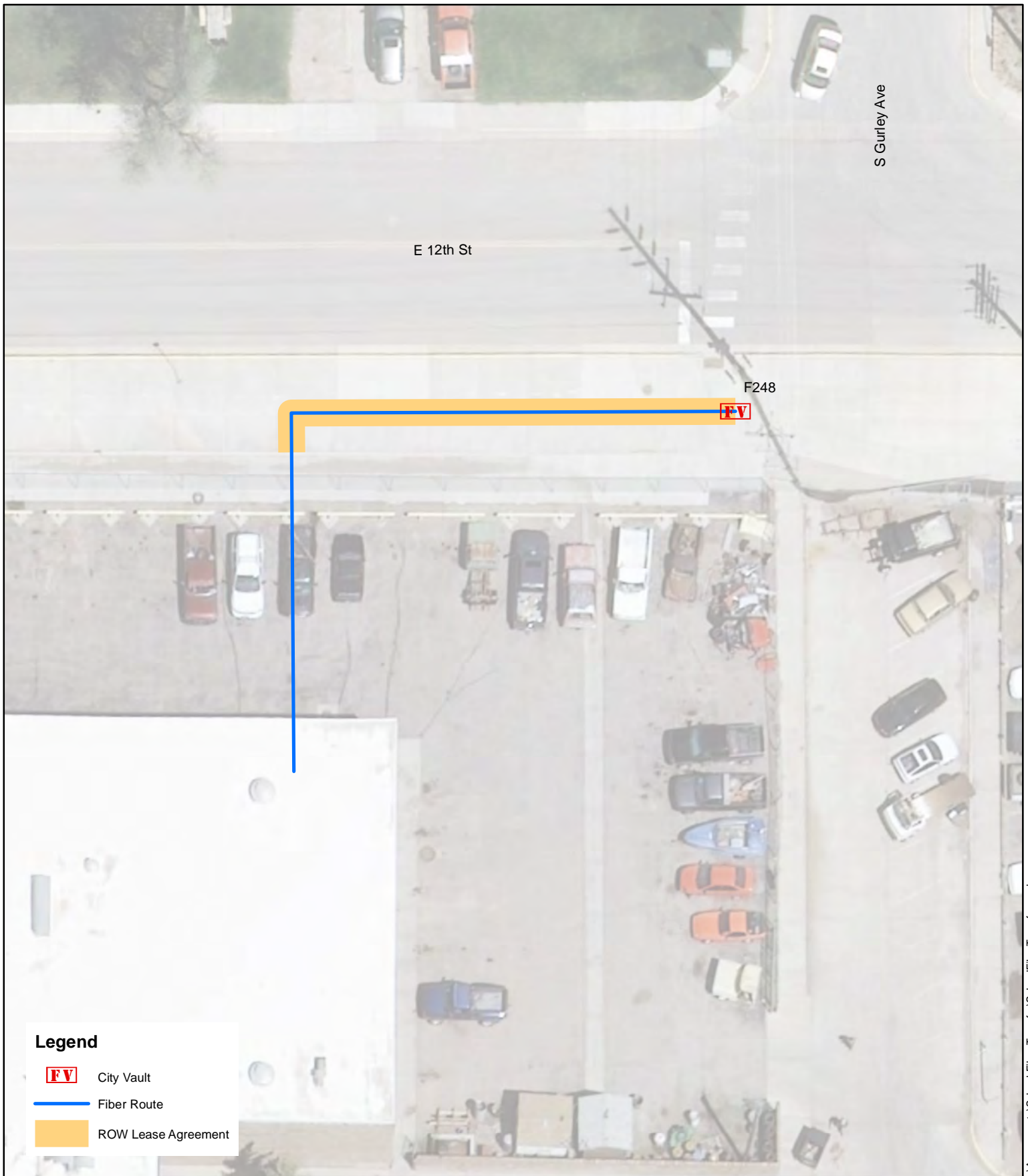
TWIN SPRUCE JUNIOR HIGH SCHOOL

General Information

Transfer of fiber ownership will not include any existing City Vaults

Fiber Transfer Information:	Approx. Distance - 19 LF	Number of Vaults - 0
City ROW Lease Information:	Approx. ROW Lease - 0 LF	

EXHIBIT A




Legend



City Vault

 Fiber Route

 ROW Lease Agreement



CITY OF GILLETTE
ELECTRICAL ENGINEERING
611 N EXCHANGE AVE
GILLETTE, WYOMING 82716
(307) 686-5277



CAMPBELL COUNTY HIGH SCHOOL

General Information

Transfer of fiber ownership will not include any existing City Vaults

Fiber Transfer Information: Approx. Distance - 156 LF

Number of Vaults - 0

City ROW Lease Information: Approx. ROW Lease - 94 LF

EXHIBIT A



CITY OF GILLETTE
ELECTRICAL ENGINEERING
611 N EXCHANGE AVE
GILLETTE, WYOMING 82716
(307) 686-5277



THUNDER BASIN HIGH SCHOOL

General Information

Transfer of fiber ownership will include existing City Vaults F016 & F201

Fiber Transfer Information:	Approx. Distance - 809 LF	Number of Vaults - 2
City ROW Lease Information:	Approx. ROW Lease - 188 LF	

EXHIBIT A



Legend



City Vault



Vault Transfer

— Fiber Route

— ROW Lease Agreement



CITY OF GILLETTE
ELECTRICAL ENGINEERING
611 N EXCHANGE AVE
GILLETTE, WYOMING 82716
(307) 686-5277



CCSD CENTRAL SERVICES

General Information

Transfer of fiber ownership will include existing City Vaults F046, F047 & F092

Fiber Transfer Information:

Approx. Distance - 1,259 LF

Number of Vaults - 3

City ROW Lease Information:

Approx. ROW Lease - 1,207 LF

EXHIBIT A



Legend



City Vault

Fiber Route



CITY OF GILLETTE
ELECTRICAL ENGINEERING
611 N EXCHANGE AVE
GILLETTE, WYOMING 82716
(307) 686-5277



CCSD MAINTENANCE BUILDING

General Information

Transfer of fiber ownership will not include any existing City Vaults

Fiber Transfer Information: Approx. Distance - 354 LF
City ROW Lease Information: Approx. ROW Lease - 0 LF

Number of Vaults - 0