



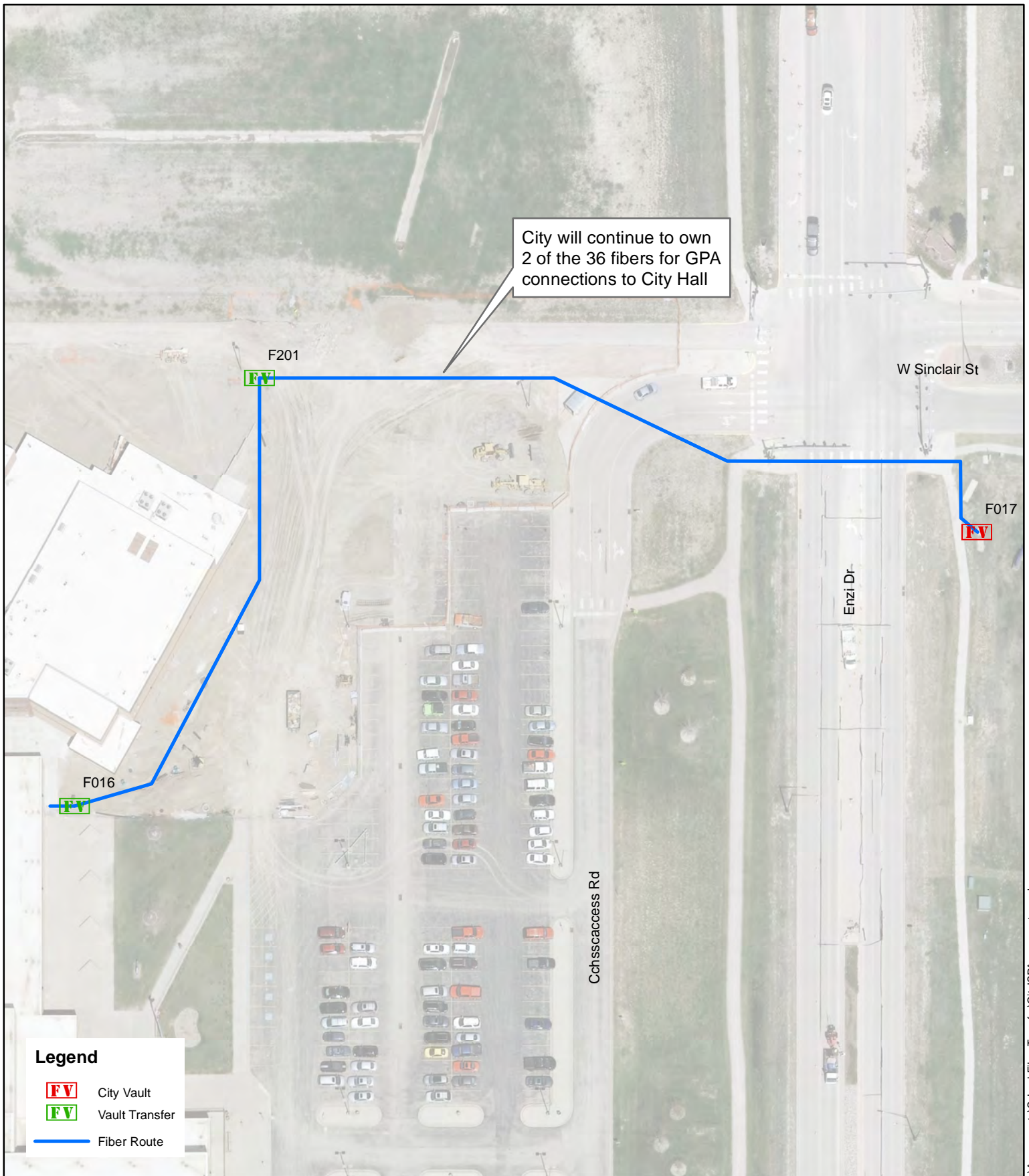
CITY OF GILLETTE
ELECTRICAL ENGINEERING
611 N EXCHANGE AVE
GILLETTE, WYOMING 82716
(307) 686-5277



CAMPBELL COUNTY HIGH SCHOOL

General Information
Agreement with ISP will be needed for City GPA Connection

City Fiber Lease Information: Approx. Distance - 156 LF



Legend

- FV City Vault
- FV Vault Transfer
- Fiber Route



CITY OF GILLETTE
ELECTRICAL ENGINEERING
611 N EXCHANGE AVE
GILLETTE, WYOMING 82716
(307) 686-5277

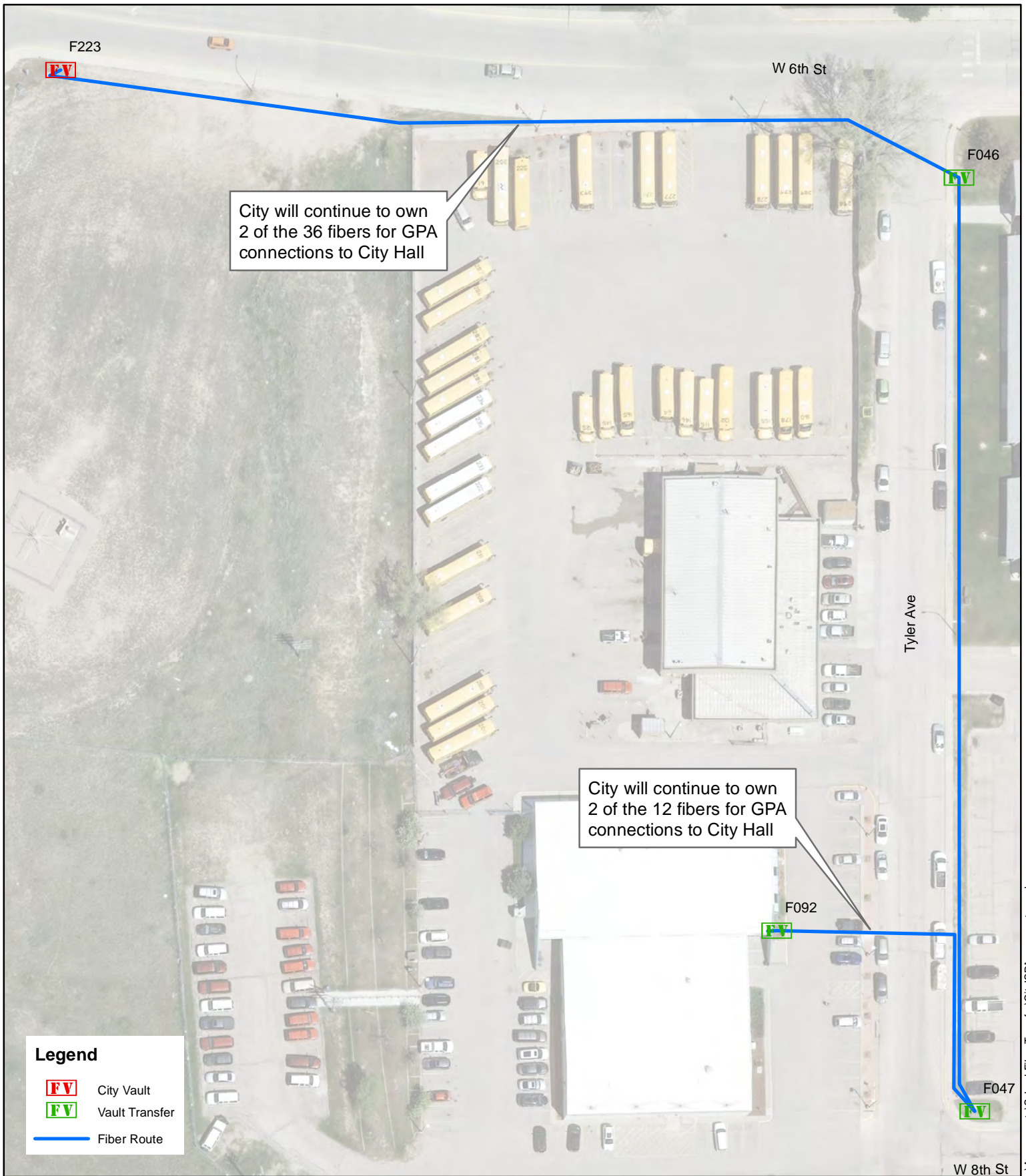


THUNDER BASIN HIGH SCHOOL

General Information
Agreement with ISP will be needed for City GPA Connection

City Fiber Lease Information: Approx. Distance - 809 LF

EXHIBIT B



Legend

- FV City Vault
- FV Vault Transfer
- Fiber Route



CITY OF GILLETTE
ELECTRICAL ENGINEERING
611 N EXCHANGE AVE
GILLETTE, WYOMING 82716
(307) 686-5277



CCSD CENTRAL SERVICES

General Information
Agreement with ISP will be needed for City GPA Connection

City Fiber Lease Information: Approx. Distance - 1,259 LF