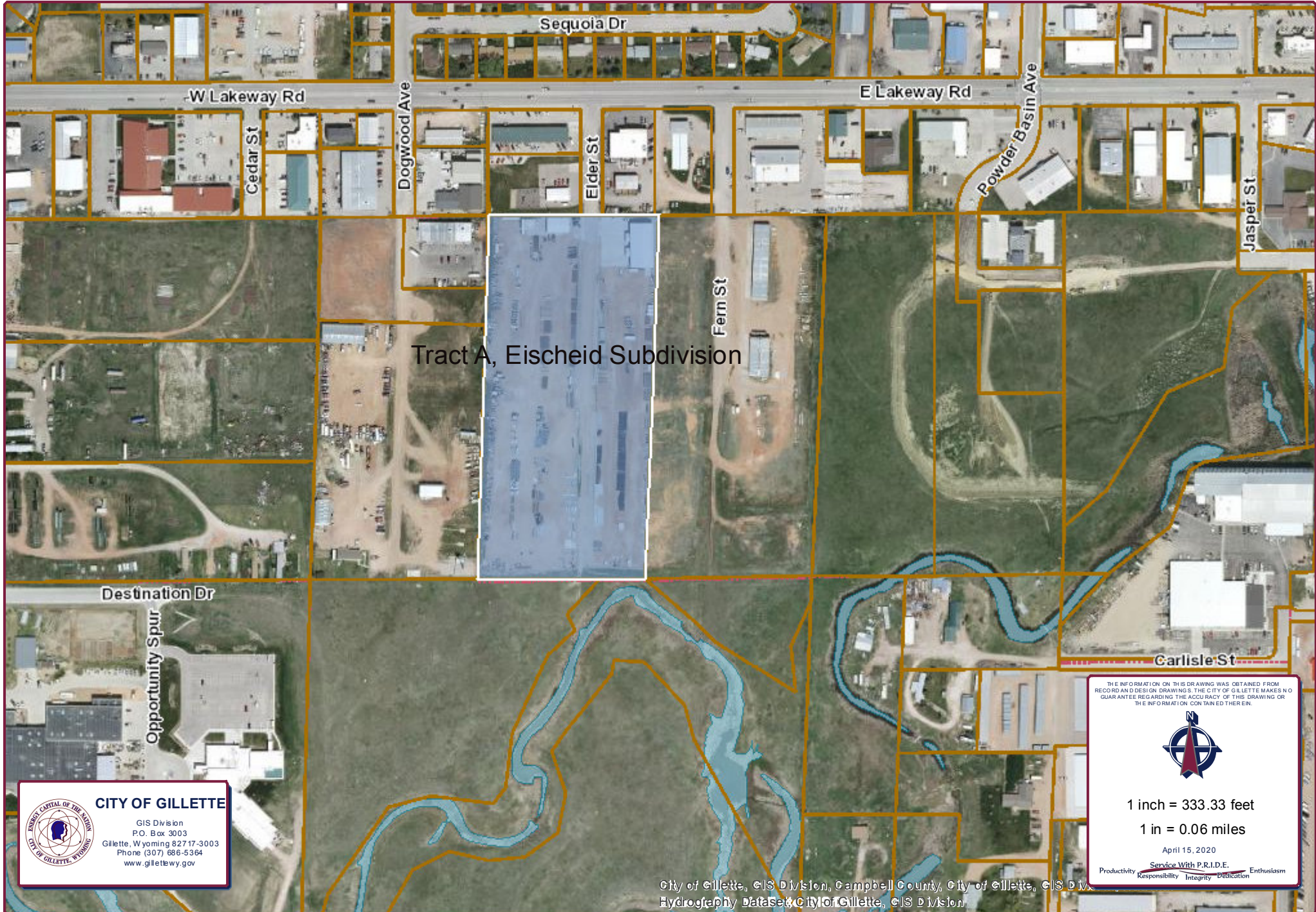


Resubdivision of Tract A, Eischeid Subdivision



CITY OF GILLETTE

GIS Division
P.O. Box 3003
Gillette, Wyoming 82717-3003
Phone (307) 686-5364
www.gillettewy.gov



1 inch = 333.33 feet

1 in = 0.06 miles

April 15, 2020

Productivity Service With P.R.I.D.E. Enthusiasm
Responsibility Integrity Dedication

City of Gillette, GIS Division, Campbell County, City of Gillette, GIS Division
Hydrography Database, City of Gillette, GIS Division