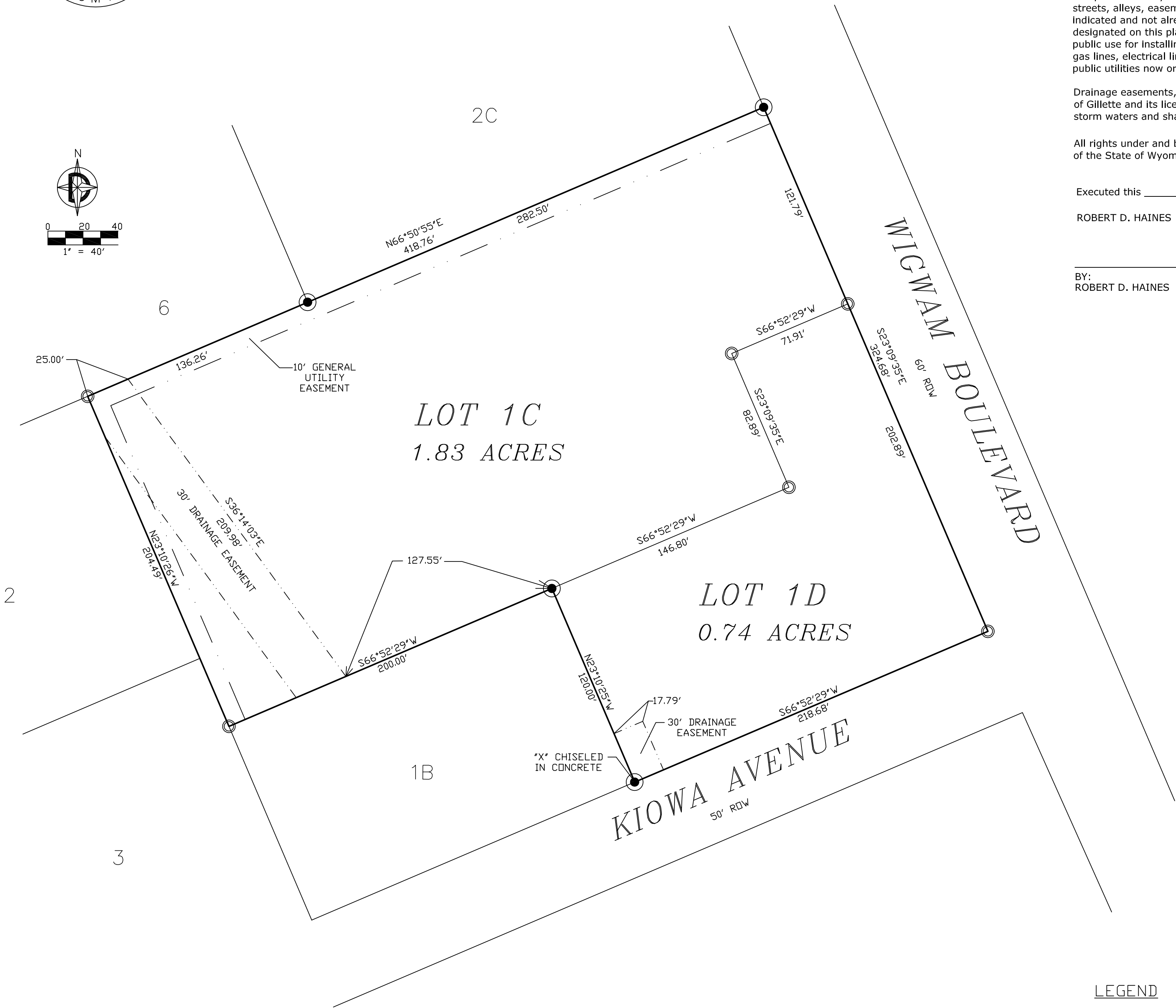
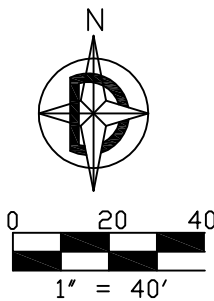


DECLARATION VACATING PREVIOUS PLATTING THIS PLAT IS THE RESUBDIVISION OF LOTS 1A, TRACT J, SUNBURST SUBDIVISION NO. 3 AS RECORDED IN BOOK 6 OF PLATS, PAGE 1 OF THE RECORDS OF THE CAMPBELL COUNTY CLERK. ALL EARLIER PLAT OR PORTIONS THEREOF, ENCOMPASSED BY THE BOUNDARIES OF THIS PLAT ARE HEREBY VACATED.

SURVEYOR'S CERTIFICATE

I, Richard T. Doyle, do hereby certify that I am a registered land surveyor, licensed under the laws of the State of Wyoming, that this plat is a true, correct, and complete plat of LOTS 1C AND 1D, TRACT J, SUNBURST SUBDIVISION NO.3 as laid out, platted, dedicated and shown hereon, that such plat was made from an accurate survey of said property by me and under my supervision and correctly shows the location and dimensions of the lots, easements, and streets of said subdivision as the same are staked upon the ground in compliance with City of Gillette regulations governing the subdivision of the land.



SUMMARY
TOTAL LOTS: 2
R.O.W. AREA: N/A
TOTAL AREA: 2.57 AC
ZONING: M-H

LEGEND

- FOUND CORNER MONUMENT
- SET 24" LONG 5/8" REBAR WITH ALUMINUM SURVEY CAP MARKED "RLS 2333"

FINAL PLAT
LOTS 1C AND 1D, TRACT J
SUNBURST SUBDIVISION NO. 3
CITY OF GILLETTE, WYOMING

A RESUBDIVISION LOT 1A, TRACT J. SUNBURST SUBDIVISION NO. 3
CITY OF GILLETTE, WYOMING

DEDICATION

Know all men by these presents that the undersigned ROBERT D. HAINES being the owners, proprietors, or parties of interest in the land shown on this plat, do hereby certify,

The above and foregoing LOT 1C AND LOT 1D, TRACT J, SUNBURST SUBDIVISION NO. 3 being more particularly described as follows:

LOT 1A, TRACT J, SUNBURST SUBDIVISION NO. 3. CITY OF GILLETTE, CAMPBELL COUNTY WYOMING.

Said tract of land contains 2.57 acres, more or less, subject to all rights, restrictions and/or easements of sight and record, and as appears on this plat, is made with the free consent, and in accordance with the desires of the undersigned owners and proprietors, and that this is a correct plat of the area as it is divided in lots, blocks, streets and easements, and

That the undersigned owners and proprietors of the land shown and described on this plat do hereby dedicate to the City of Gillette for perpetual public use all streets, alleys, easements and other lands within the boundary lines of the plat as indicated and not already otherwise dedicated for public use. Utility easements as designated on this plat are hereby dedicated to the City of Gillette for perpetual public use for installing, repairing, replacing and maintaining water lines, sewers, gas lines, electrical lines, telephone lines, cable TV lines and the forms and types of public utilities now or hereafter generally utilized by the public.

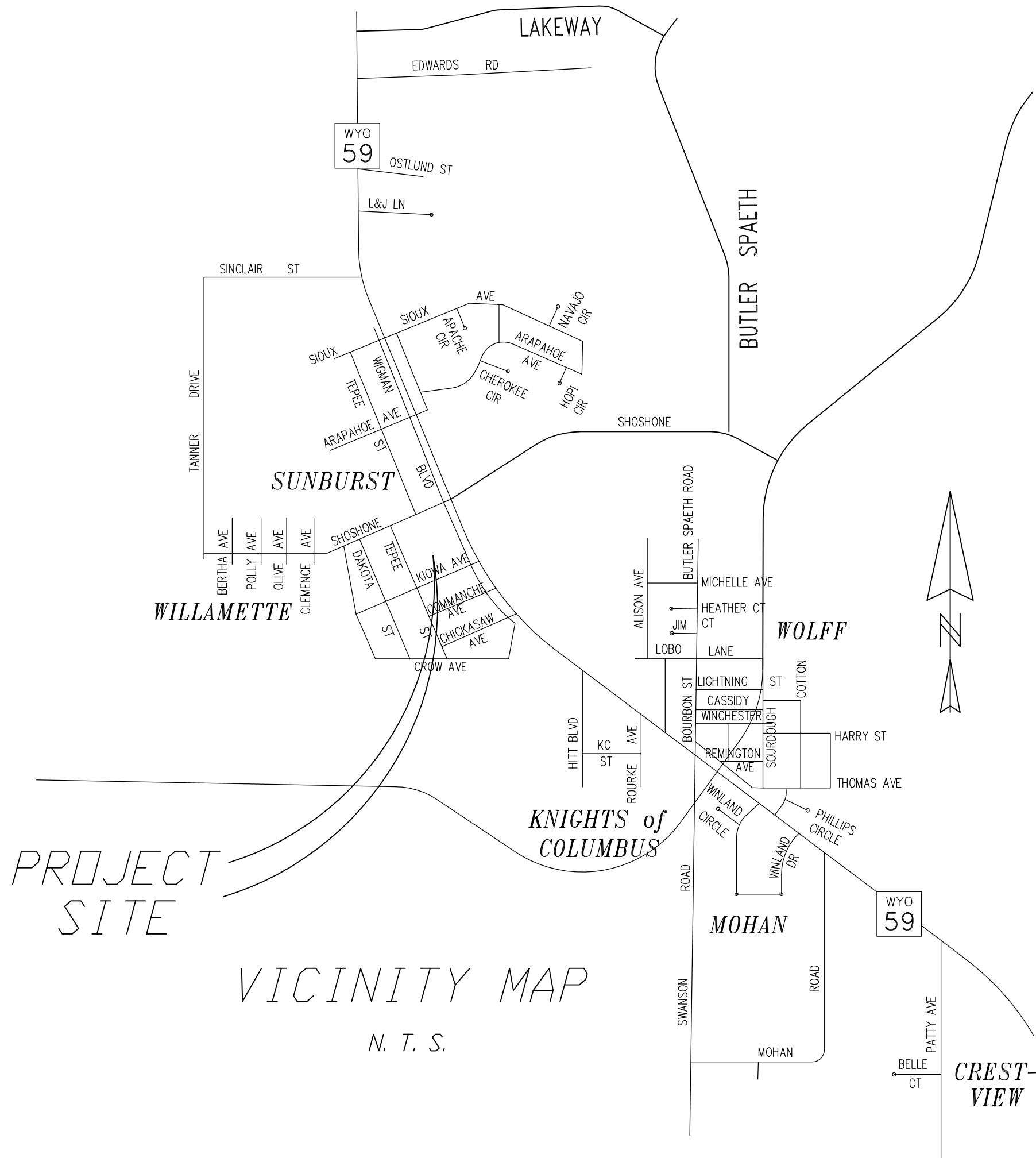
Drainage easements, as designated on this plat, are hereby dedicated to the City of Gillette and its licensees for public use, to accommodate the flow or storage of storm waters and shall be kept free of all structures and other impediments.

All rights under and by virtue of the homestead exemption laws of the State of Wyoming are hereby waived and released.

Executed this _____ day of _____, A.D., 20____ by:

ROBERT D. HAINES

BY: _____ TITLE:
ROBERT D. HAINES



APPROVALS

Data on this plat reviewed this _____ day of _____
20____, A.D., by the City Engineer of Gillette, Wyoming.

City Engineer

This plat approved by the City of Gillette Planning Commission
this _____ day of _____, 20____, A.D.

Chairman

Secretary

Approved by the City Council of the City of Gillette, Wyoming this
_____ day of _____, 20____, A.D.

Mayor

City Clerk

This plat filed for record in the office of the Clerk and Recorder
at _____ o'clock _____, 20____,
and is duly recorded in Book _____, Page No. _____.

County Clerk

FINAL PLAT
LOTS 1C & 1D, TRACT J
SUNBURST SUBDIVISION NO. 3
GILLETTE, WYOMING

Prepared for:
ROBERT D. HAINES
PO BOX 1632
GILLETTE, WY 82717

Prepared by:
DOYLE SURVEYING INC.
801 E 4TH ST
Suite 15
Gillette, WY 82716
PH (307) 686-2410

Date of Preparation: MAY, 2020

SHT 1 OF 1

REVISED 6-3-20