

FINAL PLAT
A RESUBDIVISION OF
LOT 2, TRACT A
TARVER RANCH COMPANY
ADDITION

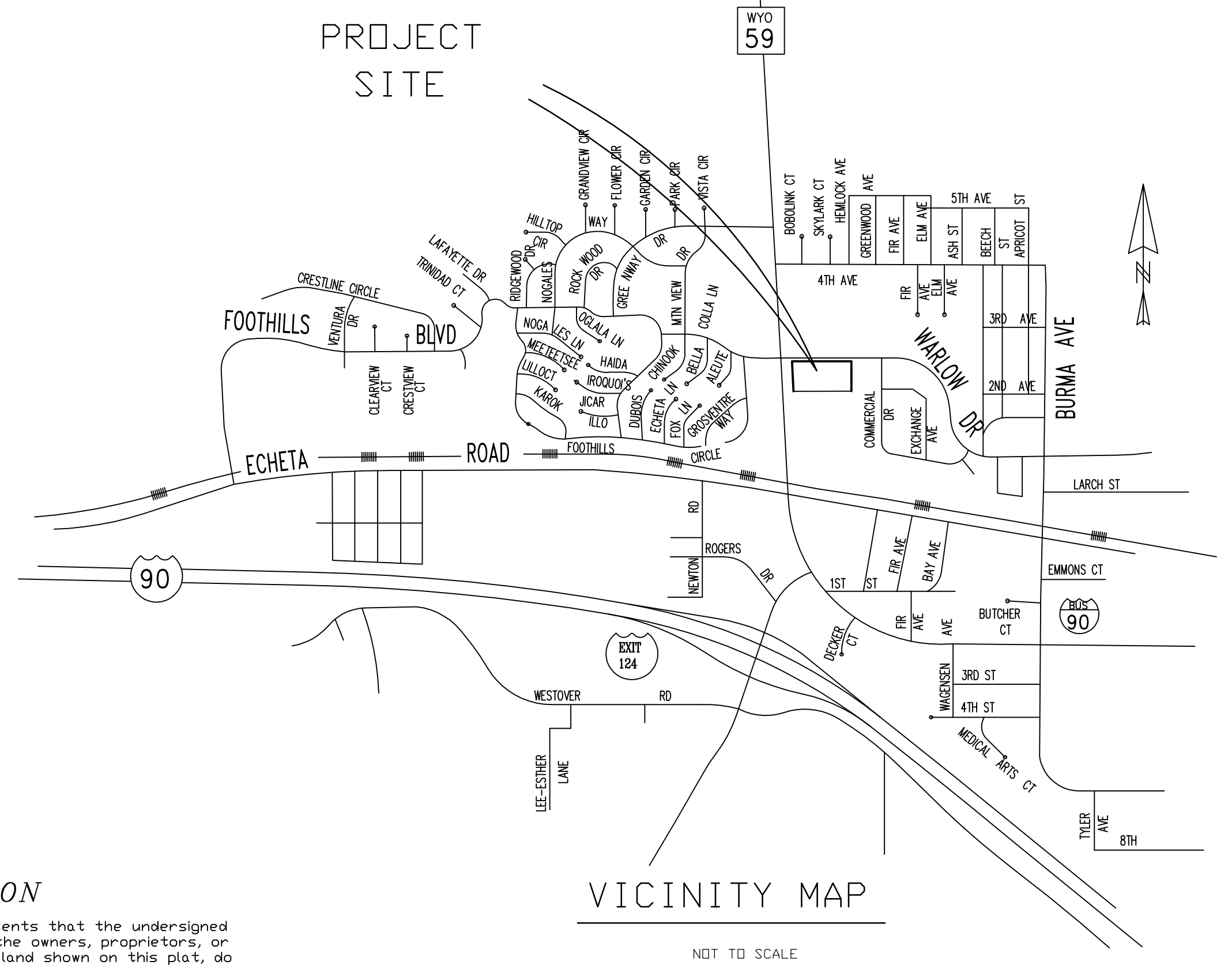
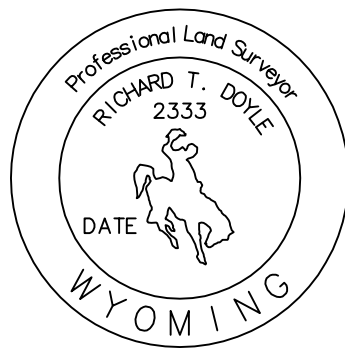
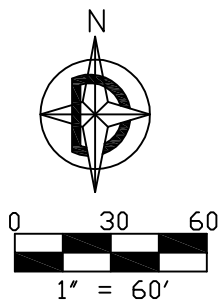
DECLARATION VACATING PREVIOUS PLATTING

THIS PLAT IS THE RESUBDIVISION OF LOT 2, TRACT A, TARVER RANCH COMPANY ADDITION AS RECORDED IN BOOK 3 OF PLATS, PAGE 53 OF THE RECORDS OF CAMPBELL COUNTY. ALL EARLIER PLATS OR PORTIONS THEREOF, ENCOMPASSED BY THE BOUNDARIES OF THIS PLAT ARE HEREBY VACATED.

TO BE KNOWN AS
LOTS 2A & 2B, TRACT A
TARVER RANCH COMPANY ADDITION
CITY OF GILLETTE, WYOMING

SURVEYOR'S CERTIFICATE

I, Richard T. Doyle, do hereby certify that I am a registered land surveyor, licensed under the laws of the State of Wyoming, that this plat is a true, correct, and complete plat of the RESUBDIVISION OF LOT 2, TRACT A, Tarver Ranch Company Addition, as laid out, platted, dedicated and shown hereon, that such plat was made from an accurate survey of said property by me and under my supervision and correctly shows the location and dimensions of the lots, easements, and streets of said subdivision as the same are staked upon the ground in compliance with City of Gillette regulations governing the subdivision of the land.



DEDICATION

Know all men by these presents that the undersigned Diverse Energy LLC, being the owners, proprietors, or parties of interest in the land shown on this plat, do hereby certify,

The above and foregoing plat designated as the RESUBDIVISION OF LOTS 2A & 2B, TRACT A, TARVER RANCH COMPANY ADDITION being more particularly described as follows:

LOT 2, TRACT A, TARVER RANCH COMPANY ADDITION, CITY OF GILLETTE, WYOMING

APPROVALS

Data on this plat reviewed this _____ day of _____, 20____, A.D., by the City Engineer of Gillette, Wyoming.

City Engineer

This plat approved by the City of Gillette Planning Commission this _____ day of _____, 20____, A.D.

Chairman

Secretary

Approved by the City Council of the City of Gillette, Wyoming this _____ day of _____, 20____, A.D.

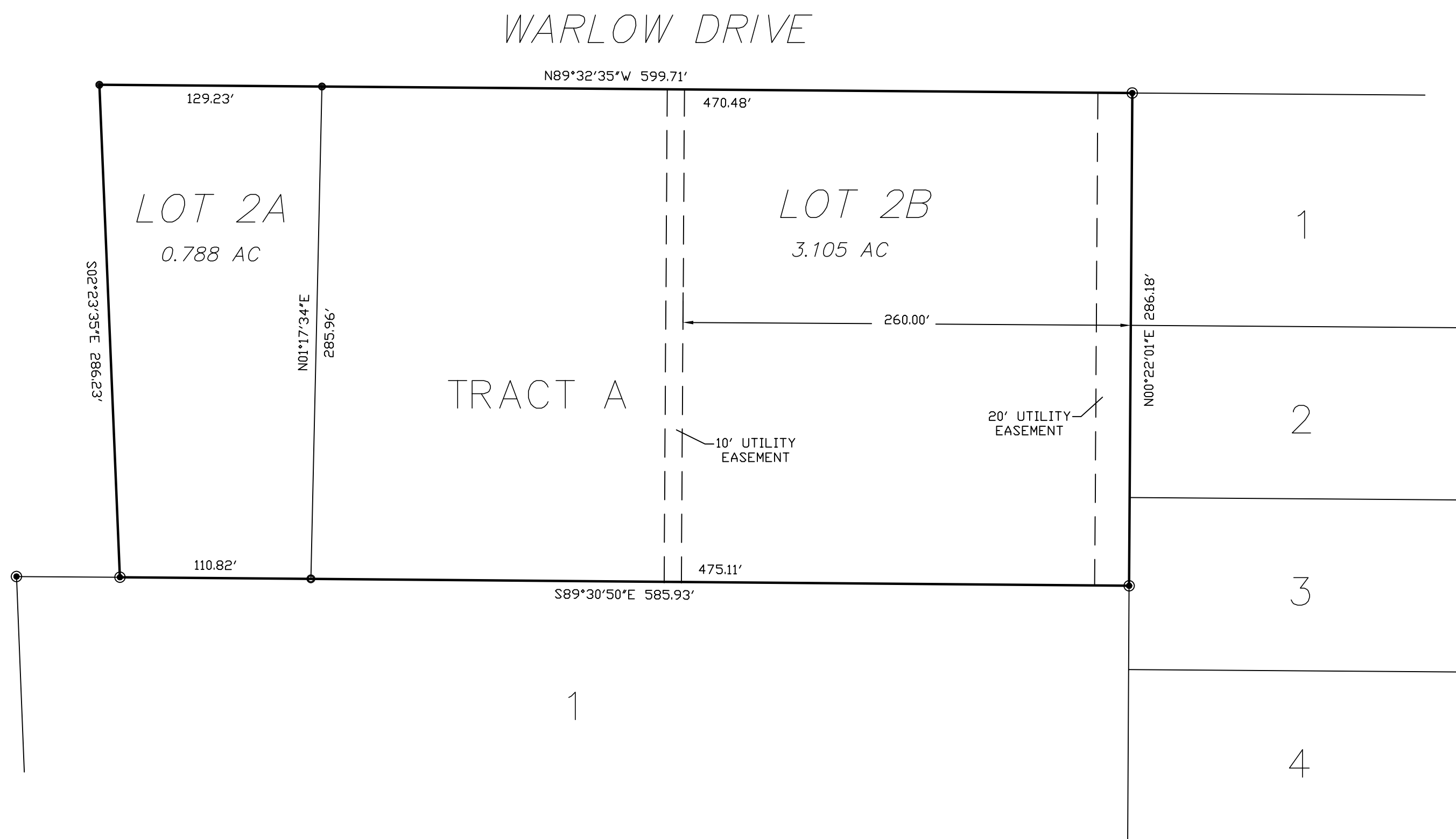
Mayor

City Clerk

This plat filed for record in the office of the County Clerk and Recorder at _____ o'clock _____, 20____, A.D., and is duly recorded in Book _____ of Plats, Page No. _____

County Clerk

STATE HIGHWAY 14-16



SUMMARY
TOTAL LOTS: 2
R.O.W. AREA: N/A
TOTAL AREA: 3.893 AC
ZONING: C-1

LEGEND

- FOUND 5/8" REBAR WITH SURVEY CAP
- SET REBAR WITH ALUM CAP
- SET CONC NAIL IN CONCRETE

STATE OF WYOMING)
) ss
COUNTY OF CAMPBELL)

The foregoing instrument was acknowledged before me this _____ day of _____, A.D., 20____, by _____, as _____ for Diverse Energy LLC, as a free and voluntary act and deed.

Witness my hand and official seal.

Notary Public

My Commission Expires _____

FINAL PLAT

LOTS 2A & 2B, TRACT A,
TARVER RANCH COMPANY ADDITION
CITY OF GILLETTE, WYOMING

PREPARED FOR:

Diverse Energy LLC
PO BOX 1052
Gillette, WY 82717

PREPARED BY:

DOYLE SURVEYING INC.
801 E. Fourth St.
Suite C-8
Gillette, WY 82716
PH: (307) 686-2410

DATE OF PREPARATION: SEPTEMBER, 2018

SHT 1 OF 1