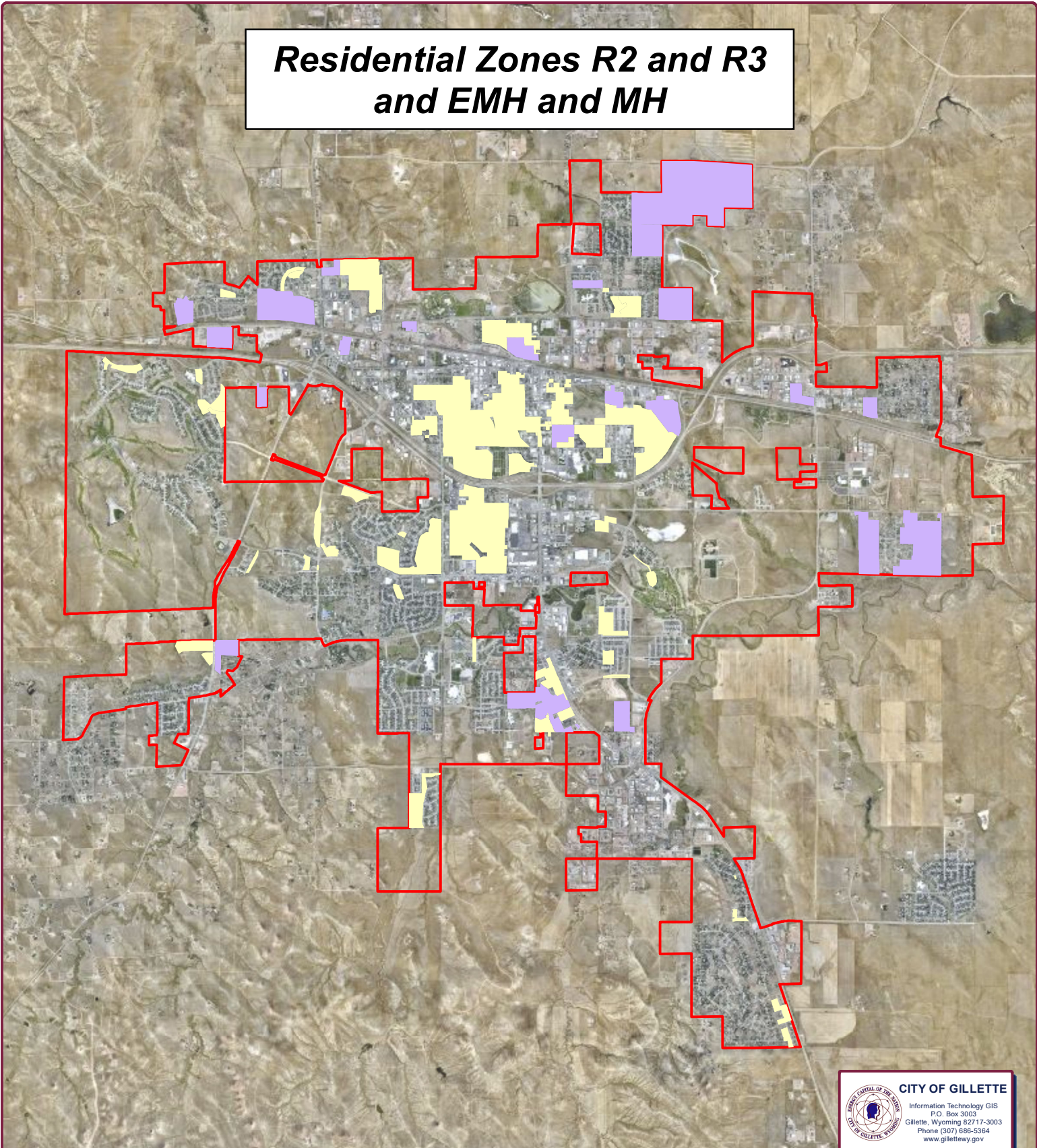



Residential Zones R2 and R3 and EMH and MH



	E-MH, Enhanced Manufactured Home
	M-H, Mobile Home
	R-2, Single & Two-Family Residential
	R-3, Single & Multiple-Family Residential
	City Limits

CITY OF GILLETTE
 Information Technology GIS
 P.O. Box 3003
 Gillette, Wyoming 82717-3003
 Phone (307) 686-5364
 www.gillettewy.gov

THE INFORMATION ON THIS DRAWING WAS OBTAINED FROM RECORD AND DESIGN DRAWINGS. THE CITY OF GILLETTE MAKES NO GUARANTEE REGARDING THE ACCURACY OF THE DRAWINGS OR THE INFORMATION CONTAINED THEREIN.


 December 06, 2023
 Service With P.R.I.D.E.
 Productivity Responsibility Integrity Dedication