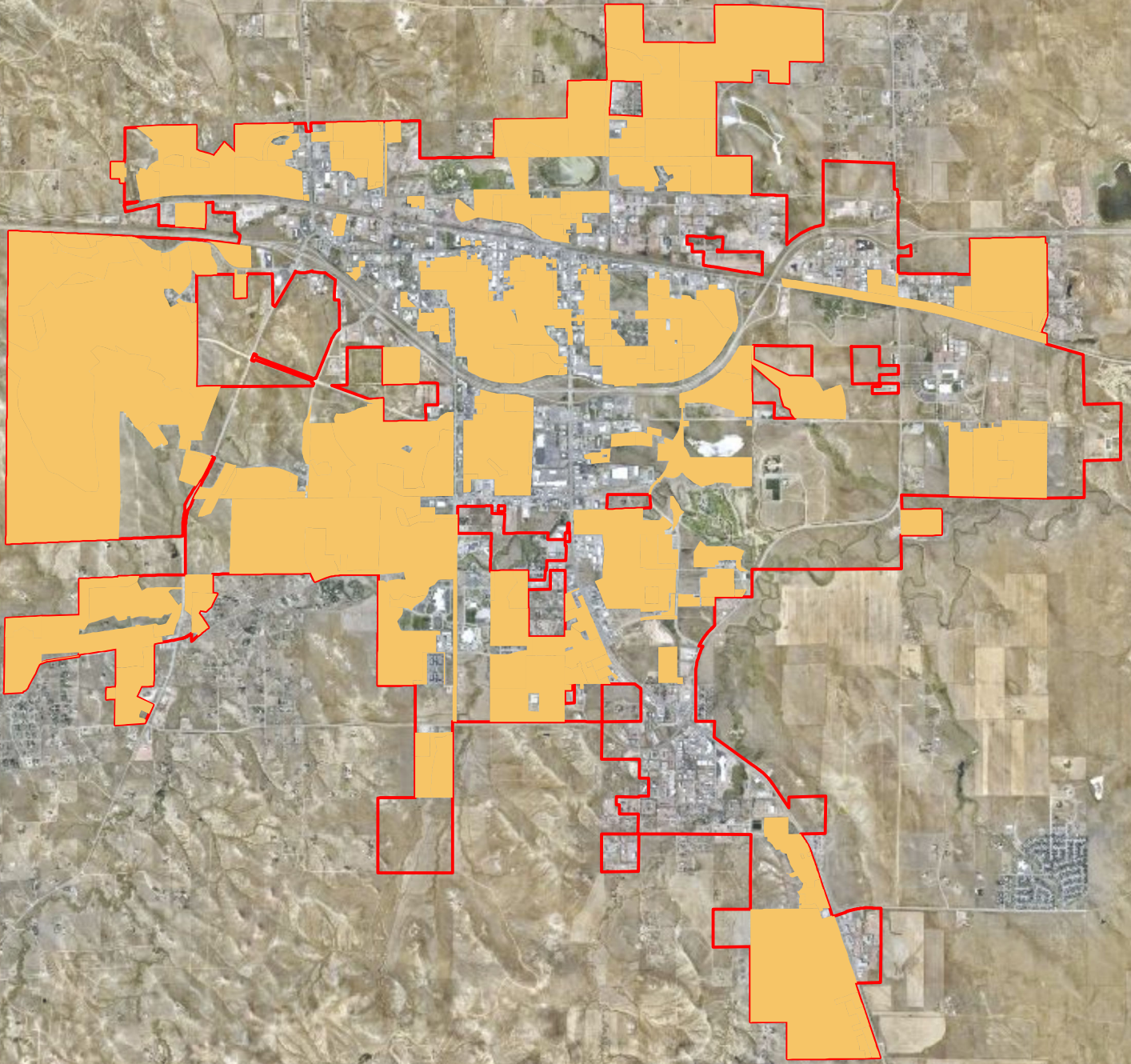











All Residential Zones



- | | |
|---|--|
|  E-MH RS, Enhanced Manufactured Home Suburban Residential |  R-2, Single & Two-Family Residential |
|  E-MH, Enhanced Manufactured Home |  R-4, Multiple-Family Residential |
|  M-H, Mobile Home |  R-R, Rural Residential |
|  R-1, Single Family Residential |  R-S, Suburban Residential |
| |  City Limits |


CITY OF GILLETTE
 Information Technology GIS
 P.O. Box 3003
 Gillette, Wyoming 82717-3003
 Phone (307) 686-5364
www.gillettewy.gov

THE INFORMATION ON THIS DRAWING WAS OBTAINED FROM RECORD AND DESIGN DRAWINGS. THE CITY OF GILLETTE MAKES NO GUARANTEE REGARDING THE ACCURACY OF THE DRAWINGS OR THE INFORMATION CONTAINED THEREIN.



December 06, 2023
 Service With P.R.I.D.E.
 Productivity Responsibility Integrity Dedication Enthusiasm