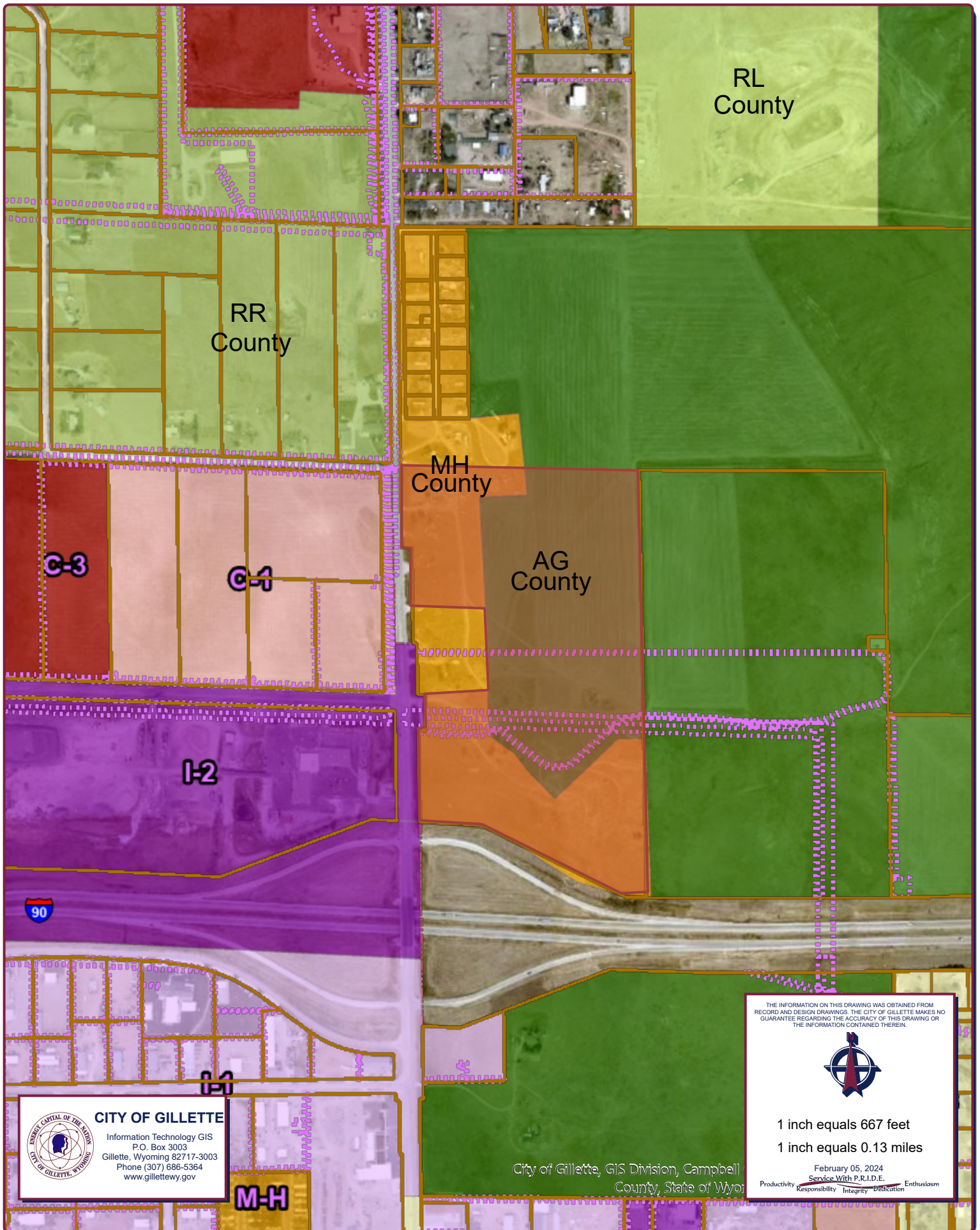


Current City and County Zoning



RL
County

RR
County

MH
County

AG
County

C-3

C-1

I-2



I-1

M-H



CITY OF GILLETTE
Information Technology GIS
P.O. Box 3003
Gillette, Wyoming 82717-3003
Phone (307) 686-5364
www.gillettewy.gov

City of Gillette, GIS Division, Campbell
County, State of Wyoming

THE INFORMATION ON THIS DRAWING WAS OBTAINED FROM
RECORD AND DESIGN DRAWINGS. THE CITY OF GILLETTE MAKES NO
GUARANTEE REGARDING THE ACCURACY OF THIS DRAWING OR
THE INFORMATION CONTAINED THEREIN.



1 inch equals 667 feet
1 inch equals 0.13 miles

February 05, 2024
Service With P.R.I.D.E.
Productivity Responsibility Integrity Dedication Enthusiasm